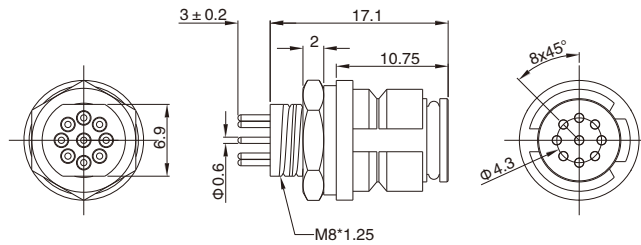


M10 Female Panel Mount, PCB Type, Rear Fastened

- Connector series: M10
- Gender: Female
- Locking type: Snap-in
- Mounting type: Rear fastened
- Part No.: MB10FBARI**ST

** refers to pins number



RoHS

General information

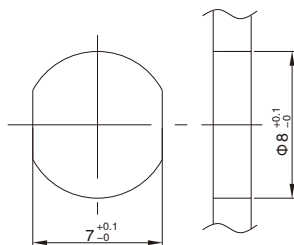
Ambient temperature:	-20°C ~ +80°C
Connector insert:	PA + GF
Connector contacts:	Brass with gold plated
Coupling nut:	Brass with nickel plated
O-ring:	FKM

Insulation resistance:	≥ 20MΩ
Contact resistance:	≤ 5mΩ
Shielding:	Unavailable
IP rating:	IP65 in locked condition
Mating endurance:	>500 cycles

Electrical data & Mechanical data

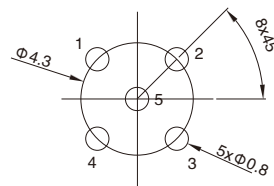
Contacts		Contacts termination	Rated current	Voltage		Part No.
				A/C	D/C	
05 pins		PCB version	2A	60V	72V	MB10FBARI05ST
09 pins		PCB version	1A	30V	30V	MB10FBARI09ST

Panel Cut-out Dimensions

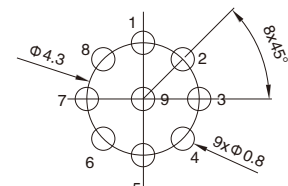


Panel cut-out

PCB Layout



5Pins Female



9Pins Female

Remarks

- Please refer to Page 77 for products' part number encoding rule.