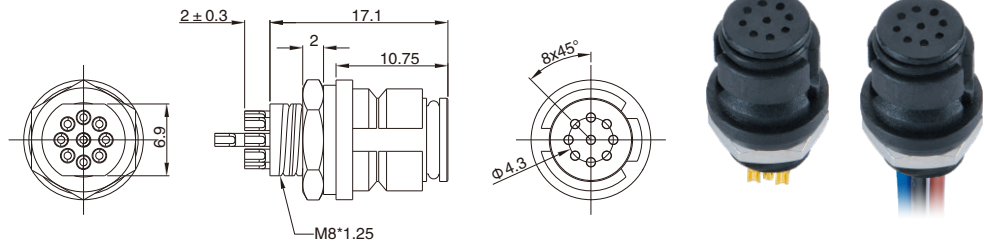


M10 Female Panel Mount, Solder Type, Rear Fastened

- Connector series: M10
- Gender: Female
- Locking type: Snap-in
- Mounting type: Rear fastened
- Part No.: MB10FSARI**ST

** refers to pins number



RoHS

General information

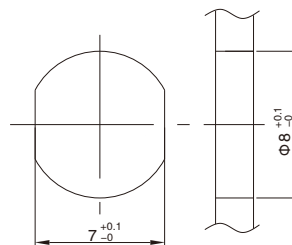
Ambient temperature:	-20°C ~ +80°C
Connector insert:	PA + GF
Connector contacts:	Brass with gold plated
Coupling nut:	Brass with nickel plated
O-ring:	FKM

Insulation resistance:	≥20MΩ
Contact resistance:	≤5mΩ
Shielding:	Unavailable
IP rating:	IP65 in locked condition
Mating endurance:	>500 cycles

Electrical data & Mechanical data

Contacts	Contacts termination	Rated current	Voltage		Wire gauge / size		Wire insulation	Part No.	
			A/C	D/C	AWG	mm ²			
05 pins		Solder version	2A	60V	72V	26AWG	0.14	PVC wire or customized	MA10FSARI05ST
09 pins		Solder version	1A	30V	30V	26AWG	0.14	PVC wire or customized	MA10FSARI09ST

Panel Cut-out Dimensions



Panel cut-out

Remarks

- Please refer to Page 77 for products' part number encoding rule.