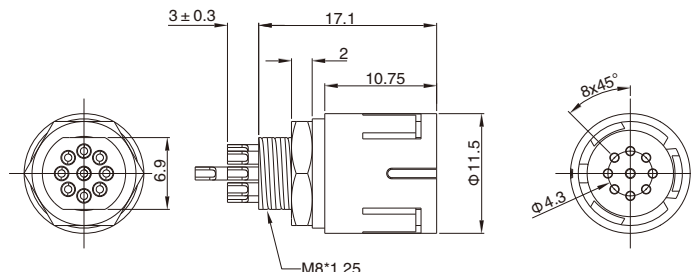


## M10 Male Panel Mount, Solder Type, Rear Fastened

- Connector series: M10
- Gender: Male
- Locking type: Snap-in
- Mounting type: Rear fastened
- Part No.: MB10MSARI\*\*ST

\*\* refers to pins number



RoHS

### General information

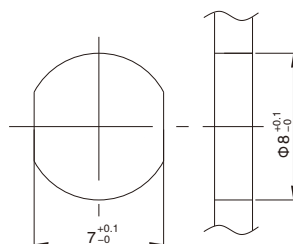
Ambient temperature:	-20°C ~ +80°C
Connector insert:	PA + GF
Connector contacts:	Brass with gold plated
Coupling nut:	Brass with nickel plated

Insulation resistance:	≥ 20MΩ
Contact resistance:	≤ 5mΩ
Shielding:	Unavailable
IP rating:	IP65 in locked condition
Mating endurance:	>500 cycles

### Electrical data & Mechanical data

Contacts	Contacts termination	Rated current	Voltage		Wire gauge / size		Wire insulation	Part No.	
			A/C	D/C	AWG	mm <sup>2</sup>			
05 pins		Solder version	2A	60V	72V	26AWG	0.14	PVC wire or customized	MA10MSARI05ST
09 pins		Solder version	1A	30V	30V	26AWG	0.14	PVC wire or customized	MA10MSARI09ST

### Panel Cut-out Dimensions



Panel cut-out

### Remarks

- Please refer to Page 77 for products' part number encoding rule.