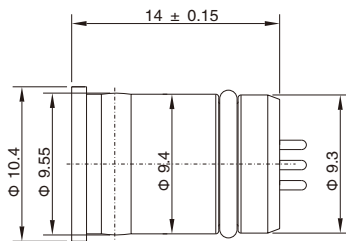


## M12 Male Plastic Housing with O-ring, PCB Type

- Connector series: M12
- Gender: Male
- Coding: A,B,D
- Locking type: Snap-in
- Mounting type: Straight
- Part No.: M12H-MB\*XX

\* refers to coding type  
XX refers to pins number



### General information



Standard:	IEC 61076-2-101
Ambient temperature:	-25°C ~ +90°C
Connector insert:	PA
Connector contacts:	Brass with gold plated
Seal / O-ring:	Epoxy resin/FKM

Insulation resistance:	≥ 100MΩ
Contact resistance :	≤ 5mΩ
Shielding:	Unavailable
IP rating:	IP68 in locked condition
Mating endurance:	>500 cycles

### Electrical data & Mechanical data

Contacts	Available Coding			Contacts termination	Rated current	Voltage		Part No.
	A	B	D			A/C	D/C	
03 pins				PCB version	4A	250V	250V	M12H-MBA03 M12H-MBB03
04 pins				PCB version	4A	250V	250V	M12H-MBA04 M12H-MBB04 M12H-MBD04
05 pins				PCB version	4A	60V	60V	M12H-MBA05 M12H-MBB05
08 pins				PCB version	2A	30V	30V	M12H-MBA08

### Remarks

- Please refer to Page 578 for the Conversion between American Wire Gauge AWG and Wire Cross-section mm<sup>2</sup>.