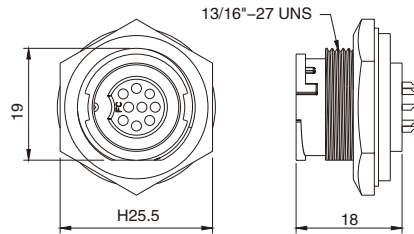


M16 Female Panel Mount, Quick-lock Type, Solder, Front fastened

- Connector series: M16
- Gender: Female
- Locking type: Quick-lock
- Mounting type: Front fastened
- Part No.: MB16FSAFQ**ST

** refers to pins number



General information

RoHS

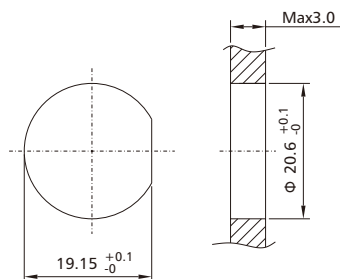
Ambient temperature:	-25°C ~ +90°C
Connector insert:	PA + GF
Connector contacts:	Brass with gold plated
Coupling nut/screw:	PA+GF
Seal / O-ring:	Epoxy resin / FKM

Insulation resistance:	≥ 100MΩ
Contact resistance :	≤ 5mΩ
Shielding:	Unavailable
IP rating:	IP65, IP67 in locked condition
Mating endurance:	>100 cycles

Electrical data & Mechanical data

Contacts	Contact termination	Rated current	Voltage		Wire gauge / size		Wire insulation	Part No.	
			A/C	D/C	AWG	mm ²			
08 pins		Solder version	4A	250V	300V	22AWG	0.34	PVC wire or customized	MB16FSAFQ08ST
09 pins		Solder version	4A	250V	300V	22AWG	0.34	PVC wire or customized	MB16FSAFQ09ST

Panel Cut-out Dimensions



Remarks

- Please refer to Page 578 for the Conversion between American Wire Gauge AWG and Wire Cross-section mm².
- Please Refer to page 292 for products' part number encoding rule.