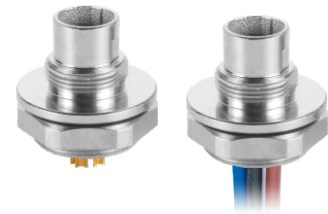
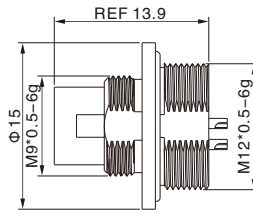


M9 Male Panel Mount, Solder Type, Rear fastened

- Connector series: M9
- Gender: Male
- Locking type: Fix screw
- Mounting type: Rear fastened
- Part No.: MB09MSARF**ST

** refers to pins number



RoHS

General information

Ambient temperature:	-25 °C ~ + 80 °C
Connector insert:	PBT
Connector contacts:	Brass with gold plated
Coupling screw:	Brass with nickel plated
Insulation resistance:	≥ 100MΩ
Contact resistance:	≤ 5mΩ

Shielding:	Unavailable
IP rating:	IP67 in locked condition
Panel cut-out:	Refer to page 237
Mating endurance:	>500 cycles

Electrical data & Mechanical data

Contacts	Contacts termination	Rated current	Voltage		Wire gauge / size		Part No.
			A/C	D/C	AWG	mm ²	
02 pins	Solder version	4A	125V	125V	24AWG	0.25	MB09MSARF02ST
03 pins	Solder version	4A	125V	125V	24AWG	0.25	MB09MSARF03ST
04 pins	Solder version	3A	125V	125V	24AWG	0.25	MB09MSARF04ST
05 pins	Solder version	3A	125V	125V	24AWG	0.25	MB09MSARF05ST
07 pins	Solder version	1A	125V	125V	26AWG	0.14	MB09MSARF07ST
08 pins	Solder version	1A	125V	125V	26AWG	0.14	MB09MSARF08ST

Remarks

- Please refer to Page 578 for the Conversion between American Wire Gauge AWG and Wire Cross-section mm².
- Please refer to Page 65 for products' part number encoding rule.