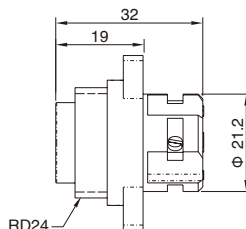
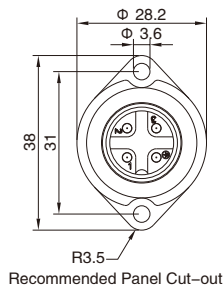


## RD24 Male Panel Mount, Screw joint, Front fastened

- Connector series: RD24
- Gender: Male
- Locking type: Fix screw
- Mounting type: Front fastened
- Part No.: MA24MWAFP\*\*\*ST

\*\*\* refers to pins number



### General information

Ambient temperature:	-25°C ~ +125 °C
Connector insert:	PBT
Connector contacts:	Brass with silver plated
Coupling nut/screw:	PBT
Seal / O-ring:	Epoxy resin / EPDM
Termination type:	Screw

Insulation resistance:	≥ 100MΩ
Contact resistance:	≤ 5mΩ
Shielding:	Unavailable
IP rating:	IP 68 in locked condition
Mating endurance:	>500 cycles

### Electrical data & Mechanical data

Contacts	Contacts termination	Rated current	Voltage		Wire gauge / size		Wire insulation	Part No.
			A/C	D/C	AWG	mm <sup>2</sup>		
1+PE (1+1)  A-Coding	Screw joint	12A	600V	600V	18~14AWG	0.75	PVC wire or customized	MA24MWAFP1+1ST
2+PE (2+1)  A-Coding	Screw joint	12A	600V	600V	18~14AWG	0.75	PVC wire or customized	MA24MWAFP2+1ST
3+PE (3+1)  A-Coding	Screw joint	12A	600V	600V	18~14AWG	0.75	PVC wire or customized	MA24MWAFP3+1ST

### Remarks

- Please refer to Page 578 for the Conversion between American Wire Gauge AWG and Wire Cross-section mm<sup>2</sup>.
- Please refer to Page 423 for products' part number encoding rule.