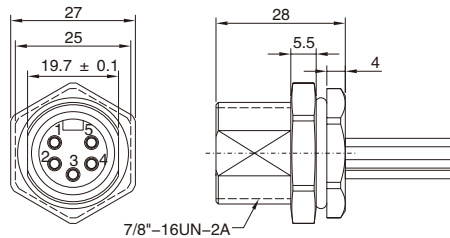


Mini-change(7/8") Male Panel Mount, Crimp, Front fastened

- Connector series: Mini-change(7/8")
- Gender: Male
- Locking type: Fix screw
- Mounting type: Front fastened
- Part No.: MINI-C**MST-PCF-XXXXXX

** refers to pins number
X refers to cable specification



General information



| | |
|----------------------|---------------------------|
| Ambient temperature: | -40°C ~ +90°C |
| Connector insert: | TPU |
| Connector contacts: | Brass with gold plating |
| Coupling nut/screw: | Brass with nickel plating |
| Seal / O-ring: | Epoxy resin/FKM |

| | |
|------------------------|--------------------------|
| Insulation resistance: | ≥ 100MΩ |
| Contact resistance : | ≤ 5mΩ |
| Shielding: | Unavailable |
| IP rating: | IP68 in locked condition |
| Panel Cut-out: | Refer to page 360 |
| Mating endurance: | >500 cycles |

Electrical data & Mechanical data

| Contacts | Contacts termination | Rated current | Voltage | | Wire gauge / size | | Wire insulation | Part No. | |
|----------|----------------------|---------------|---------|------|-------------------|-----------------|-----------------|------------------------|-------------------------|
| | | | A/C | D/C | AWG | mm ² | | | |
| 03 pins | | Crimp version | 13A | 300V | 300V | 18AWG | 1.0 | PVC wire or customized | MINI-C03MST-PCF-XXXB100 |
| 04 pins | | Crimp version | 13A | 300V | 300V | 18AWG | 1.0 | PVC wire or customized | MINI-C04MST-PCF-XXXB100 |
| 05 pins | | Crimp version | 8A | 300V | 300V | 20AWG | 0.5 | PVC wire or customized | MINI-C05MST-PCF-XXXB50 |
| 16 pins | | Crimp version | 4A | 250V | 250V | 24AWG | 0.25 | PVC wire or customized | MINI-C16MST-PCF-XXXB25 |

Note: X refers to cable specification

Remarks

- Please refer to Page 578 for the Conversion between American Wire Gauge AWG and Wire Cross-section mm².
- Please refer to Page 328 for products' part number encoding rule.