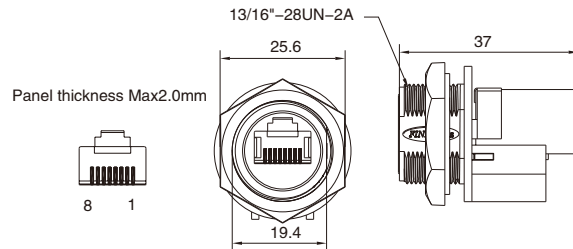


## RJ45 Female Panel Mount, Front fastened

- Connector series: RJ45
- Gender: Female
- Locking type: Fix screw
- Mounting type: Front fastened
- Part No.: RJ45S-WF08STSP



### General information

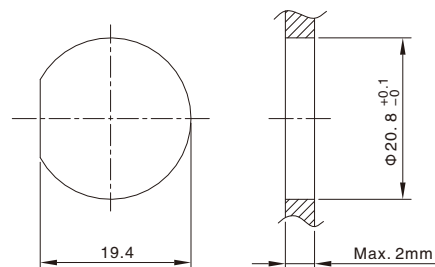
Ambient temperature:	-20°C ~ +80°C
Connector insert:	PBT+GF
Connector contacts:	Phosphor bronze with gold plated
Coupling nut/screw:	PA+GF
Seal / O-ring:	FKM

Insulation resistance:	≥ 100MΩ
Contact resistance :	≤ 30mΩ
Shielding:	Available
IP rating:	IP67 in locked condition

### Electrical data & Mechanical data

Contacts	Rated current	Voltage		Part No.
		A/C	D/C	
RJ45 8P8C  female	1.5A	125V	125V	RJ45S-WF08STSP

### Panel Cut-out Dimensions



### Remarks

- Please refer to Page 449 for products' part number encoding rule.