



RM-A Series

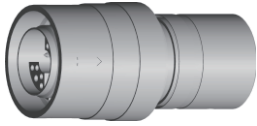
Miniature High-speed Data Transmission Connector

- Push pull self-latching system
- Excellent waterproof performance IP68(20m/24h)
- 360° EMC Shielded
- Receptacle with vacuum sealing structure, suitable for sealing equipment
- 4 codes alignment key and polarized keying system to avoid cross-interface

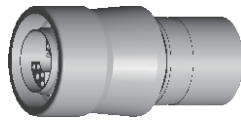


RM-A Series

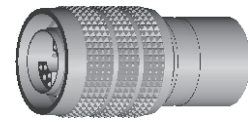
Plugs



PSX

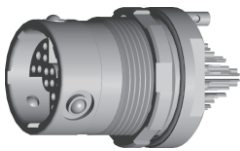


PSA

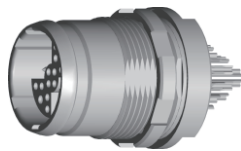


PSM

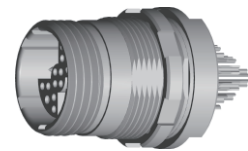
Receptacles



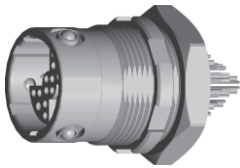
FGK



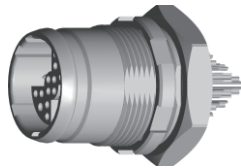
FGA



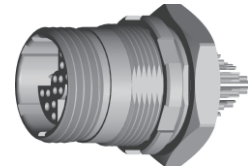
FGM



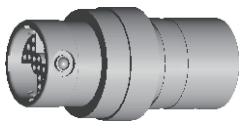
ECG



ECA



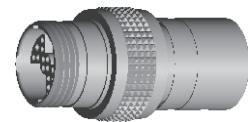
ECM



PHX

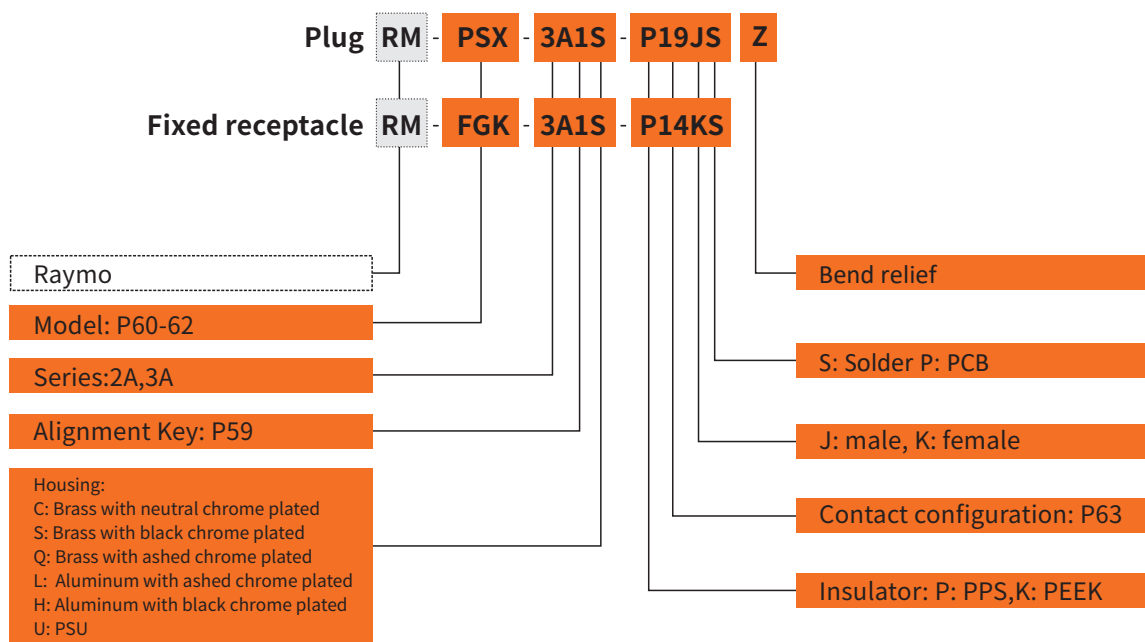


PHA



PHM

Part Numbering System



RM-A

Part No.Example

Straight plug

RM-PSX-3A1S-P19JSZ= Straight cable mount plug with key(1), 3A series, 19 contacts, outer shell in black chrome-plated brass, PPS insulator, male solder contacts, nut for a black bend relief.

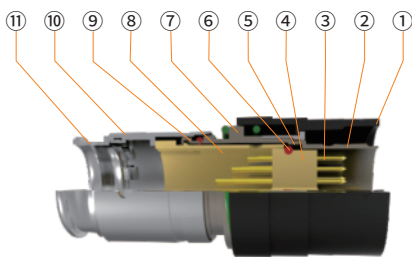
Free receptacle

RM-FGK-3A1S-P19KS= Fixed panel mount receptacle with key (1), 3A series, 19 contacts, outer shell in black chrome-plated brass, PPS insulator, female solder contacts.

Part Section Showing Internal Components

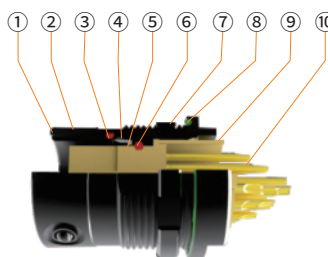
Straight Plug

- ① Outer shell
- ② Inner shell
- ③ Male contact
- ④ Insulator
- ⑤ Latch sleeve
- ⑥ Inner O-ring
- ⑦ Spring
- ⑧ Insulator carrier
- ⑨ Back O-ring
- ⑩ Back nut
- ⑪ Bend relief back nut



Fixed Receptacle

- ① Outer shell
- ② Insulative ball
- ③ O-ring
- ④ Retainer ring
- ⑤ Insulator
- ⑥ O-ring
- ⑦ Hexagonal nut
- ⑧ O-ring
- ⑨ Insulator carrier
- ⑩ Female contact



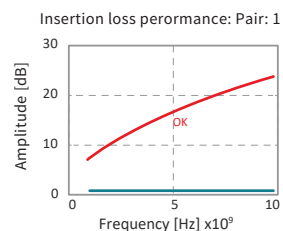
High-speed data transfer

Ethernet 8-PIN



A unique robust and sealed miniature connector for Ethernet applications in harsh environments.

- AWG24, compatible with long angle standard Ethernet cables
- Symmetrical hermaphroditic contact block
- 0.5 mm contact

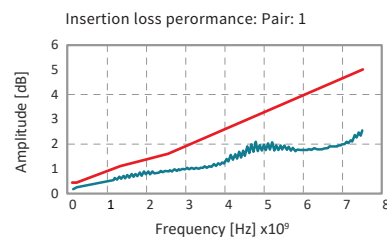


USB 3.0 9-PIN



Optimized design for full USB 3.0 performance. Successfully tested to the full S-parameter standards with cables up to 2m.

- Advanced power contacts
- Hermaphroditic contact block
- 0.5 mm contact



RM-A



		06-4 pin	06-12 pin	08-8 pin	08-09 pin	08-19 pin	08-24 pin	
USB 2.0		YES	YES	YES	YES	YES	YES	Full spec up to 2 m cable
USB 3.0		NO	YES	NO	YES	YES	YES	Application dependent
		NO	NO	No	YES	NO	NO	Full spec up to 2 m cable
ETHERNET 10 Gbit/		NO	YES	YES	No	YES	YES	Ethernet AWG 28
		NO	NO	YES	No	NO	NO	Ethernet AWG 24
HDMI		NO	NO	No	No	YES	YES	HDMI 1.4

Technical informaton

Environmental & Mechanical data

Characteristic	Performance	Standrd
Sealing performance mated and unmated	IP68, 20m/24h water sealing 10^6 mbar. l/sec gas sealing	IEC 60529 IEC 60068-2-17 Test Qk, Method 3
Operatng temperature range	-40°C to +135°C	IEC 60512-6-1 IEC 60068-2-14-Nb
Corrosion resistance mated	96h	IEC 60068-2-11 Test Ka; MIL-STD-202 Method 101; EIA-364-26
Endurance	5000 matng cycles.Preserved mechanical and electrical functionality. Normal wear will appear.	IEC 60512-9-1
Vibraton (Screw-locking version only)	10 to 2000Hz,1.5 mm or 15 g, 12 sweep cycles per axis, 20 minutes per 10-2000-10 Hz sweep cycle, no discontinuity >1 us	MIL-STD-202 G Method 204D Condit
Unlocking Force (Quick-release version only)	Size 06 = Typical 25 N \pm 40% Size 08 = Typical 35 N \pm 40%	
Shock	300g	MIL-STD-202 G Method 213

Electrical data

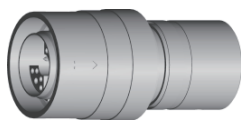
Characteristic	Performance	Standard
Contact resistance	5m Ω (typical value)	IEC 60512-2-1-2a; IEC 60512-2-2-2b
Shell resistance	Anthractite 5m Ω (Cabled)	IEC 60512-2-6-2f
	Black 50m Ω (Cabled)IEC	IEC 60512-2-6-2f
Insulaton resistance	10 ¹⁰ Ω	IEC 60512-3-1-3a
Shielding effeccveness	360° shielded	-

RM-A

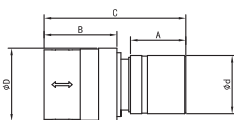
Mechanical keys(A Series)

2A	Size	1	2	3	4
Rceptacles					

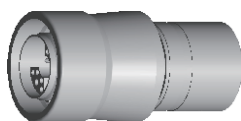
3A	Size	1	2	3	4
Rceptacles					



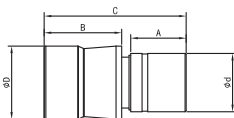
RM-PSX Push pull locking cable mount plug, IP68, multiples keys



Reference		Dimensions(mm)				
Model	Series	Ød	ØD	A	B	C
RM-PSX	2A	8.5	9.9	10.1	12.8	25
RM-PSX	3A	10.5	12.9	10.1	12.8	25



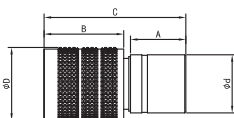
RM-PSA Quick release cable mount plug, IP68, multiples keys



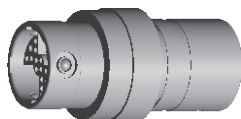
Reference		Dimensions(mm)				
Model	Series	Ød	ØD	A	B	C
RM-PSA	2A	8.5	9.9	10.1	13.6	25
RM-PSA	3A	10.5	12.9	10.1	13.6	25



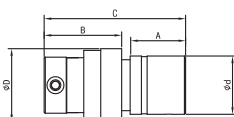
RM-PSM Screw locking cable mount plug, IP68, multiples keys



Reference		Dimensions(mm)				
Model	Series	Ød	ØD	A	B	C
RM-PSM	2A	8.5	9.9	10.1	14.0	25
RM-PSM	3A	10.5	12.9	10.1	14.0	25

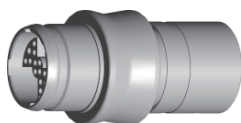


RM-PHX Push pull locking cable receptacle, IP68, multiples keys

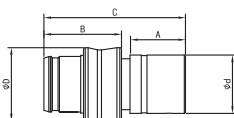


Reference		Dimensions(mm)				
Model	Series	Ød	ØD	A	B	C
RM-PHX	2A	8.5	9.9	10.1	13.7	25
RM-PHX	3A	10.5	11.6	10.1	13.7	25

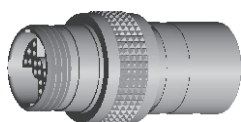
RM-A



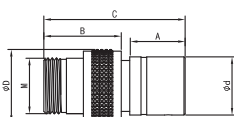
RM-PHA Quick release, cable mount socket, IP68, multiples keys



Reference		Dimensions(mm)				
Model	Series	Ød	ØD	A	B	C
RM-PHA	2A	8.5	9.9	10.1	13.7	25
RM-PHA	3A	10.5	12.9	10.1	13.7	25

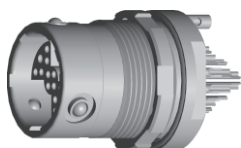


RM-PHM Screw locking, cable mount receptacle, IP68, multiples keys

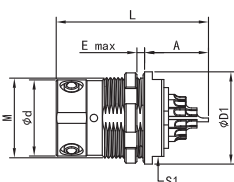


Reference		Dimensions(mm)					
Model	Series	Ød	ØD	A	B	C	M
RM-PHM	2A	8.5	9.9	10.1	13.7	25	M8*2
RM-PHM	3A	10.5	12.9	10.1	13.7	25	M10*2

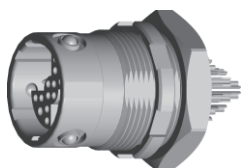
RM-A



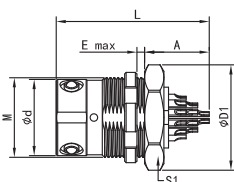
RM-FGK Push pull locking, panel mount receptacle, IP68, back panel mounting



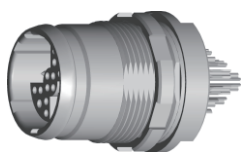
Reference		Dimensions(mm)						
Model	Series	Ød	ØD1	M	A	L	E max	S1
RM-FGK	2A	8.0	10	M8.5*0.35	7.6	19.1	3.0	8
RM-FGK	3A	10.0	12	M10.5*0.5	9.1	20.6	3.0	10



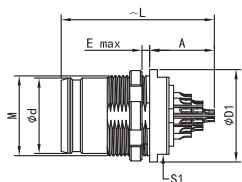
RM-ECG Screw locking, panel mount receptacle, IP68, back panel mounting



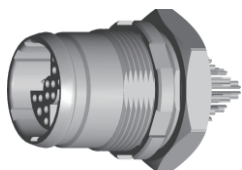
Reference		Dimensions(mm)						
Model	Series	Ød	ØD1	M	A	L	E max	S1
RM-FGK	2A	8.0	11.4	M8.5*0.35	7.6	19.1	3.0	10
RM-FGK	3A	10.0	13.7	M10.5*0.5	9.1	20.6	3.0	12



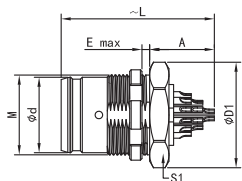
RM-FGA Push pull locking, panel mount receptacle, IP68, back panel mounting



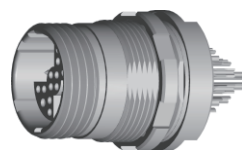
Reference		Dimensions(mm)						
Model	Series	Ød	ØD1	M	A	L	E max	S1
RM-FGA	2A	7.8	10.0	M8.5*0.35	7.6	19.1	3.0	8
RM-FGA	3A	9.8	12.0	M10.5*0.5	9.1	20.6	3.0	10



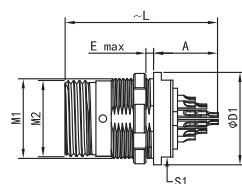
RM-ECA screw locking, panel mount receptacle, IP68, front or back panel mounting



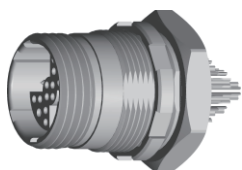
Reference		Dimensions(mm)						
Model	Series	Ød	ØD1	M	A	L	E max	S1
RM-ECA	2A	7.8	11.4	M8.5*0.35	7.6	19.1	2.3	10
RM-ECA	3A	9.8	13.7	M10.5*0.5	9.1	20.6	2.3	12



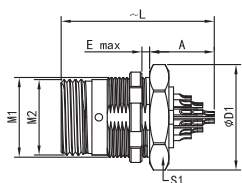
RM-FGM Push pull locking, panel mount receptacle, IP68, back panel mounting



Reference		Dimensions(mm)						
Model	Series	ØD1	M1	M2	A	L	E max	S1
RM-FGM	2A	10	M8.5*0.35	M8*2	7.6	19.1	3.0	8
RM-FGM	3A	12	M10.5*0.5	M10*2	9.1	20.6	3.0	10



RM-ECM Screw locking, panel mount socket, IP68, front or backpanel mounting



Reference		Dimensions(mm)						
Model	Series	ØD1	M1	M2	A	L	E max	S1
RM-ECM	2A	11.4	M8.5*0.35	M8*2	7.6	19.1	2.3	10
RM-ECM	3A	13.7	M10.5*0.5	M10*2	9.1	20.6	2.3	12

RM-A

Insulator Configuration

			Insulator	Contact No.	ØA(MM)	Solder contact	PCB straight contact	PCB elbow contact	Test voltage(contact -shell) k/v AC-rms	Test voltage(contact -contact)k/v AC-rms	Rated current /A
2A			P04	2	0.5	●	●	○	1.20	1.90	1.0
				2	1.3						10
			P12	10	0.5	●	●	○	0.90	1.20	1.0
				2	0.5						5.0
3A			P08	8	0.5	●	●	○	1.60	2.20	3.8
					0.5						
			P09	7	0.5	●	●	○	1.20	1.80	1.0
				2	0.5						5.0
			P19	15	0.5	●	●	○	0.90	1.50	1.0
				4	0.5						5.0
			P24	20	0.5	●	●	○	0.90	1.20	1.0
				4	0.5						5.0

- First choice alternative
- Special order alternative

RM-A