

RM-H Series

Metal Miniature Push Pull Self-locking Connector

- Secure high performance push pull self-locking system
- High pin density and light weight construction
- Alignment key and polarized keying system to avoid cross-interface
- 360° EMC shielded
- Robust and shock resistant designs
- Available solder, PCB contact

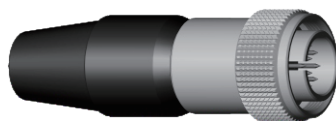


RM-H Series

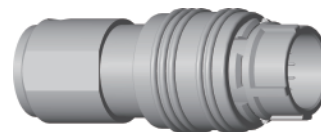
Plugs



HR10A



HR10A

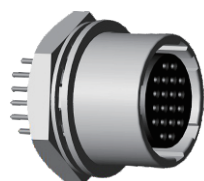


HR25A

Receptacles



HR10A



HR10A

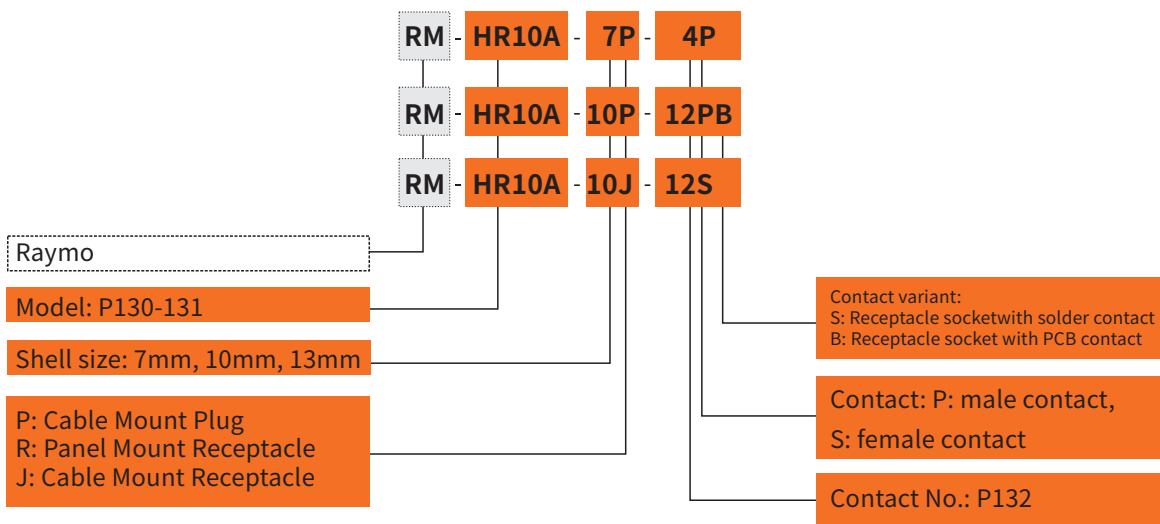


HR10A



HR10A

Part Numbering System



Part No.Example

Straight plug with cable collet

RM-HR10A-7P-6P= Cable Mount plug, HR10A series, 7mm shell, multipole 6 contacts, male in solder type, brass-alloyed shell with nickel plated, PPS insulator, black colour bend relief for OD 4.2-5.0mm cable.

Fixed receptacle

RM-HR10A-10R-12PN= Fixed receptacle, 10mm shell size, 12 pin male contact in PCB type, outshell in nickel-plated brass, PPS insulator.

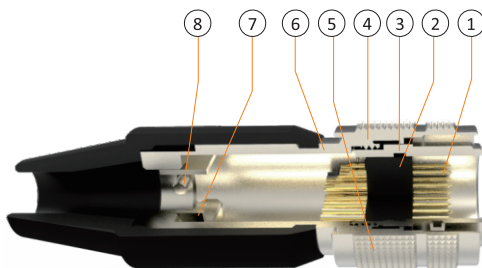
Free cable receptacle

RM-HR10A-10J-12S= Free cable receptacle with cable collet, 10mm shell size, 12 female contact outshell in nickel-plated brass, PPS insulator, with a black colour bend relief.

Part Section Showing Internal Components

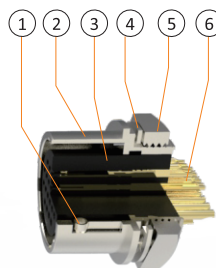
Straight Plug

- ① Male contact
- ② Insulator
- ③ Inner shell
- ④ Snap Spring
- ⑤ Outer shell
- ⑥ Ground crown
- ⑦ Screw
- ⑧ U collet nut

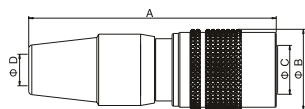


Fixed Receptacle

- ① Locking spring
- ② Outer shell
- ③ Insulator
- ④ Locking gasket
- ⑤ Hexagonal nut
- ⑥ Female contact

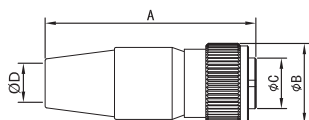
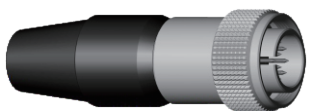


RM-H



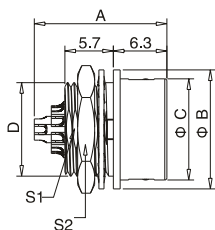
HR10A Cable mount plug

Reference		Dimensions(mm)			
Model	No.of pins	A	B	C	D
7mm	4,6	35	11.5	7.5	5
10mm	10,12	43	14.7	9	7
13mm	20	58.8	19	13	7



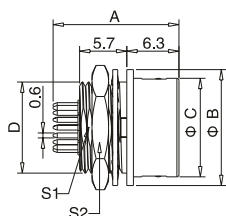
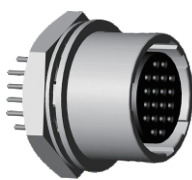
HR10A Cable mount plug

Reference		Dimensions(mm)			
Model	No.of pins	A	B	C	D
10mm	10,12	39.5	14.7	9.5	7



HR10A Panel mount receptacle

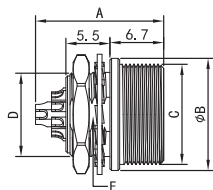
Reference		Dimensions(mm)				
Model	No.of pins	A	B	C	D	E
7mm	4,6	14	11	8.85	M11*0.75	10
10mm	10,12	16	14	11.9	M11*0.75	13
13mm	20	19.2	18	15.4	M8*0.5	17



HR10A Panel mount receptacle, printed PCB contact

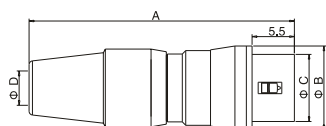
Reference		Dimensions(mm)				
Model	No.of pins	A	B	C	D	E
7mm	4,6	15.6	11	8.85	M8*0.5	10
10mm	10,12	15.6	14	11.9	M11*0.75	13
13mm	20	17.8	18	15.4	M14*0.5	17

RM-H



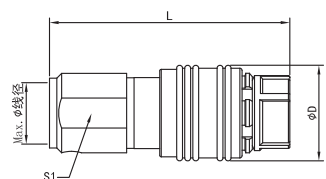
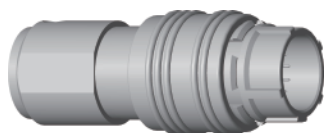
HR10A Panel mount receptacle

Reference		Dimensions(mm)				
Model	No.of pins	A	B	C	D	E
10mm	10,12	16	14	M11*0.75	M11*0.75	9.6



HR10 Cable mount receptacle

Reference		Dimensions(mm)			
Model	No.of pins	A	B	C	D
7mm	4,6	35.3	11	8.85	10
10mm	10,12	43	14	11.9	13



HR25A push pull self-latching plug

Reference		Dimensions(mm)			
Model		D	L	S1	MAX Ø
HR25A		13	32.8	10	6.5

Insulator Configuration

shell size	7 mm			10 mm	
Contact No. view					
Contact No.	4	5	6	10	12
Test Voltage	AC500V for a minute	AC300V for a minute		AC300V for a minute	
Test Current	2A	2A		2A	
Insulation Resistance	MIN 1000M Φ	MIN 1000M Φ		MIN 1000M Φ	
Contact Resistance	MAX 10m Φ	MAX 10m Φ		MAX 10m Φ	
Solder cup OD	Φ 0.8	Φ 0.8		Φ 0.8	

shell size	13 mm	25 mm
Contact No. view		
Contact No.	20	20
Test Voltage	AC300V for a minute	AC300V for a minute
Test Current	2A	2A
Insulation Resistance	MIN 1000M Φ	MIN 1000M Φ
Contact Resistance	MAX 10m Φ	MAX 10m Φ
Solder cup OD	Φ 0.8	Φ 0.8

Note:

- 1: Above view is from socket front view.
- 2: Voltage is test voltage.
- 3: Insulator resistance is tested based on DC100V.
- 4: Contact resistance is tested based on DC100V.

Receptacle PCB type pinout

