

RM-U Series

Metal Waterproof Push Pull Self-locking Connector

U series has same insulator and contact configuration as F series:

- Secure high performance push pull self-locking system
- Compact design and light weight construction
- Sealed up to IP68 and hermetic
- 3 codes alignment keys system to avoid cross-interface
- 360° EMC shielded
- High pin density contributing to equipment miniaturization
- Robust and shock resistant designs
- Available solder, PCB and right angle PCB contact



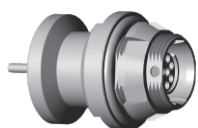
RM-U Series

Plugs



FSX

Receptacles



FG3



FGK

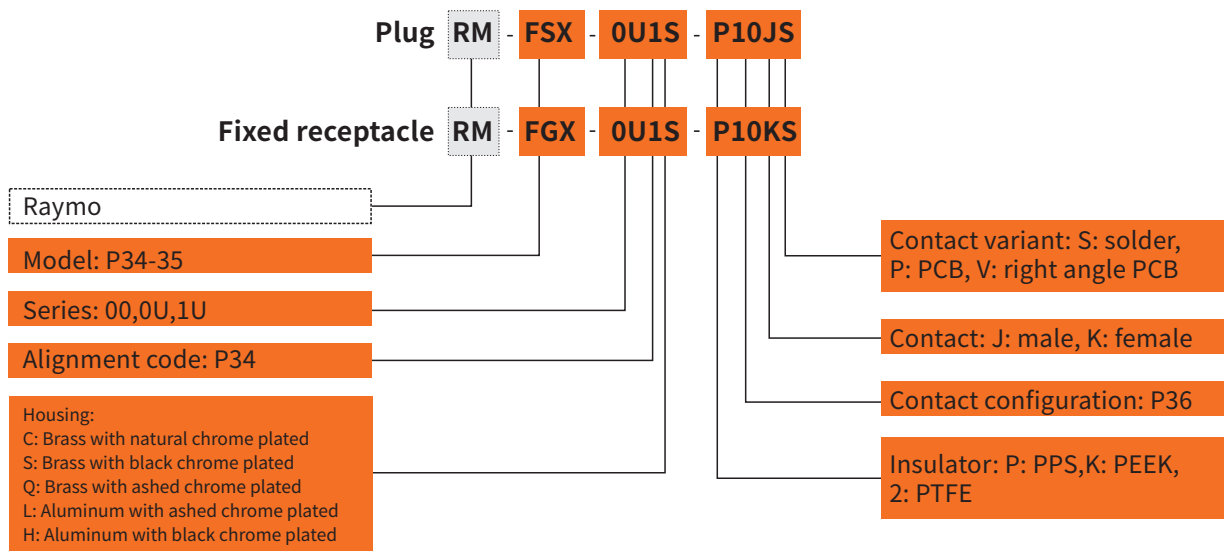


FGX



PGX

Part Numbering System



RM-U

Part No.Example

Straight plug with cable collet

RM-FSX-0U1S-P10JS= straight plug, 0U series, code 1, multipole 10 contacts, outer shell in black chrome-plated brass, PPS insulator, male solder contacts, IP68.

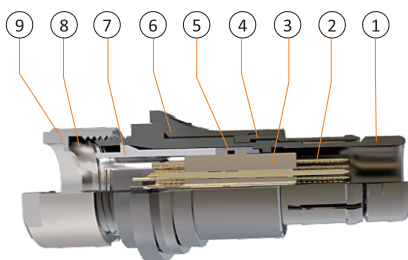
Fixed receptacle

RM-FGX-0U2C-P10KS= fixed receptacle, 0U series, code 2, multipole 10 contacts, outer shell in natural chrome-plated brass, PPS insulator, female solder contacts, IP68.

Part Section Showing Internal Components

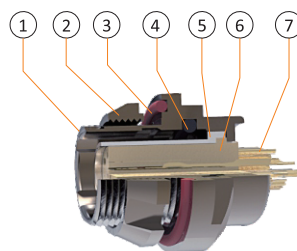
Cable Mount Plug

- ① Inner shell
- ② Male contact
- ③ Insulator
- ④ Latch sleeve
- ⑤ Fixed spacer
- ⑥ Outer shell
- ⑦ Cable collet
- ⑧ EMI spacer
- ⑨ Collet nut



Fixed Receptacle

- ① Outer shell
- ② Hexagonal nut
- ③ Outer o-ring
- ④ Inner o-ring
- ⑤ Fixed spacer
- ⑥ Insulator
- ⑦ Female contact



Technical Characteristics

Mechanical and Climatical

Characteristics	Value	Standard
Endurance	>5000cycles	IEC60512-5test9a
Humidity	Up to 95% at 60°C	
Temperature range	-55°C, +250°C	
Resistance to vibration	10-2000Hz, 15g	IEC 60512-4 test 6d
Shock resistance	100g, 6ms	IEC 60512-4 test 6c
Salt spray corrosion test	>96h	IEC 60512-6 test 11f
Protection index (mated)	IP68	IEC 60529
Climatical category	55/175/21	IEC 60068-1

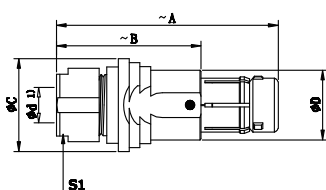
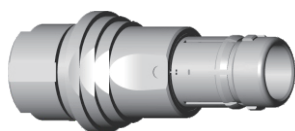
Electrical

Characteristics		Value	Standard
Shielding efficiency	at 10 MHz	>65 dB	IEC 60619-1-3
	at 1 GHz	>45 dB	IEC 60619-1-3

Alignment key

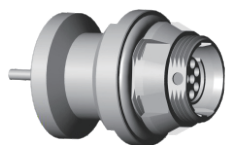
00U	Code	1	0U				
	Guide mark	•	•	▼	■	*	*
	Plug front view						

1U	Code	1	2	3	4
	Guide mark	•	▼	■	*
	Plug front view				

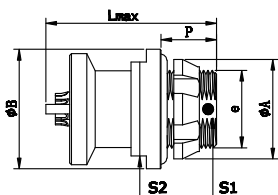


RM-FSX straight plug

Reference		Dimensions(mm)					
Model	Series	A	B	C	D	Ød max	S1
RM-FSX	00U	26.4	18.4	10.4	7.4	3.5	/
RM-FSX	0U	28.7	18.7	12	9	4.5	8
RM-FSX	1U	37.7	26.6	15	11	7	12

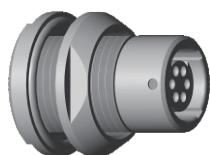


RM-FG3 Sealed Panel Mount Receptacle
with ground tag

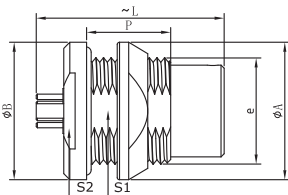


Reference		Dimensions(mm)						
Model	Series	A	B	e	L	P	S1	S2
RM-FG3	0U	13	14	M9*0.5	20	6.5	11	8

RM-U



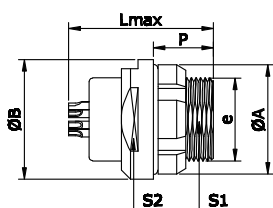
RM-FGK Sealed Panel Mount Receptacle,
Straight PCB contacts



Reference		Dimensions(mm)						
Model	Series	A	B	e	L	P	S1	S2
RM-FGK	1U	18	18	M14*1.5	24.6	11	12	15



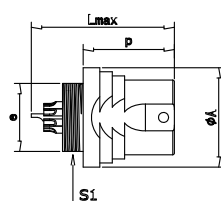
RM-FGX Sealed Panel Mount Receptacle



Reference		Dimensions(mm)						
Model	Series	A	B	e	L	P	S1	S2
RM-FGX	00U	10	10.9	M7*0.5	14.5	5	6.25	/
RM-FGX	0U	12	12	M9*0.5	15.7	6.5	7.9	11
RM-FGX	1U	16	16	M12*1.0	21	6.5	10	14



RM-PGX Sealed panel mount receptacle



Reference		Dimensions(mm)				
Model	Series	A	e	L	P	S1
RM-PGX	00U	10.4	M7*0.5	16.4	11.5	6.25
RM-PGX	0U	12.0	M9*0.5	17.3	11.0	8.2

Insulator Configuration

			Code	Contact No.	ØA(MM)	Solder contact	PCB straight contact	PCB elbow contact	Test voltage(contact -shell) k/v AC-rms	Test voltage(contact -contact)k/v AC-rms	Rated current /A
00			P02	2	0.5	●	●	●	1.00	0.95	5.0
			P03	3	0.5	●	●	●	0.80	0.95	3.0
			P04	4	0.5	●	●	●	0.80	0.65	2.0
			P05	5	0.35	●	●	●	0.70	1.00	1.5
			P07	7	0.3	●	●	●	0.60	0.75	1.0
0U			P02	2	0.9	●	●	●	1.70	1.30	9.2
			P03	3	0.9	●	●	●	1.30	1.30	8.2
			P04	4	0.7	●	●	●	1.20	1.20	5.5
			P05	5	0.7	●	●	●	1.00	0.80	5.2
			P07	7	0.5	●	●	●	1.00	0.80	2.0
			P09	9	0.5	●	●	●	1.10	0.80	1.7
			P10	10	0.5	●	●	●	0.90	0.80	1.3
			P13	13	0.4	●	●	●	0.40	0.40	1.5
			P13	13	0.4	●	●	●	0.40	0.40	1.5
1U			P05	5	0.9	●	●	●	1.25	1.15	9.0
			P06	6	0.7	●	●	●	1.05	1.2	7.0
			P07	7	0.7	●	●	●	0.95	1.05	7.0
			P08	8	0.7	●	●	●	0.95	1.15	5.0
			P10	10	0.7	●	●	●	0.90	1.50	2.5
			P12	12	0.5	●	●	●	0.80	1.2	2.0
			P16	16	0.5	●	●	●	0.80	1.25	1.5

● First choice alternative
○ Special order alternative

RM-U