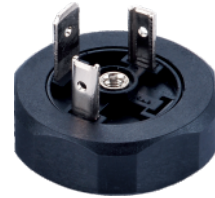
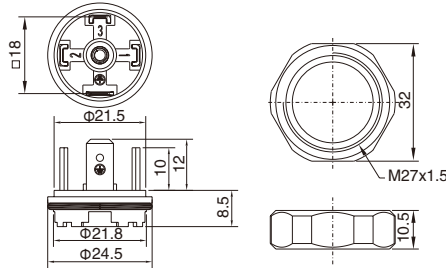


## Valve Plug, Male Base Conn., Type A, Circular, with Hexagonal Nut

- Connector series: Valve plug
- Gender: Male
- Construction type: A
- Locking system: Central nut
- Part No.: VCAMA03\*\*\*-1

\*\* refers to pins number



### General information

Standard:	DIN EN 175 301-803-A
Ambient temperature:	-30°C ~ +125°C
Termination:	Soldering
Pin dimensions:	6.3x0.8mm, 4.8x0.8mm
Housing color:	Black
Housing material:	PA+GF
Contact:	Brass with tin plated or nickel plated
Central nut:	Brass with nickel plated

Rated voltage:	400V
Rated impulse voltage:	4000V
Rated current:	16A
Insulation resistance:	$\geq 100\text{M}\Omega$
Contact resistance:	$\leq 4\text{m}\Omega$
IP rating:	IP 65 in locked condition

### Electrical data & Mechanical data

Contacts		Part No.	Normal circuit diagram	
3+PE		VCAMA0331-1	.....	00
2+2PE		VCAMA0322-1	.....	...
2+PE		VCAMA0321-1	.....	...
3P		VCAMA0303-1	.....	...
4P		VCAMA0304-1	Customized Circuit Diagram	

### Remarks

- Please refer to Page 433 for products' part number encoding rule.