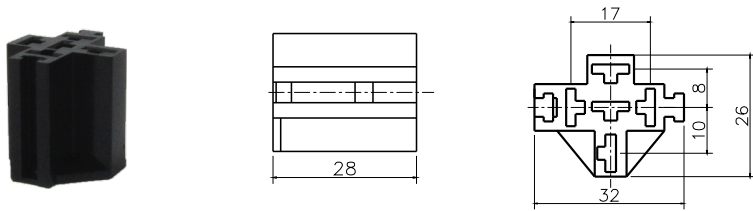


Sockets

CS1

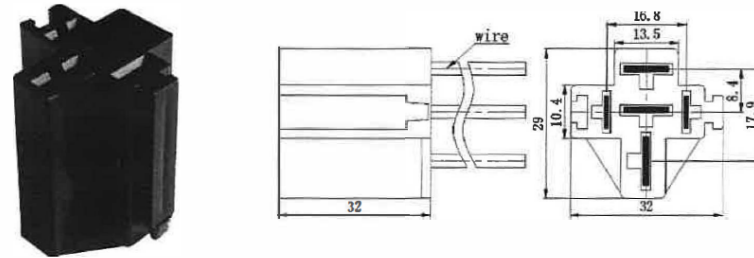
Appearance illustration (Unit: mm)



*Note: With 15mm wire (AWG#14): A Type: CS1-AW
B Type: CS1-CW
**Applicable relay type: FRC1 and FRC2 (with 15mm wire AWG#14)

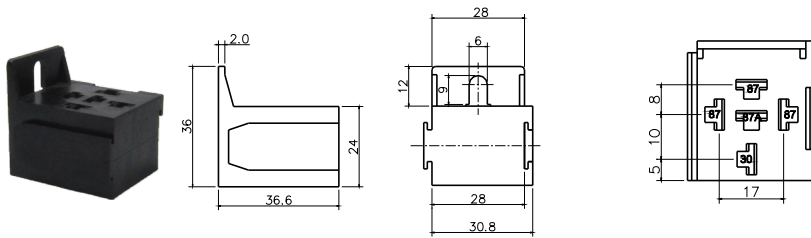
CS3-CW

Terminal Layout 底视图 (Bottom View)



CS1-4

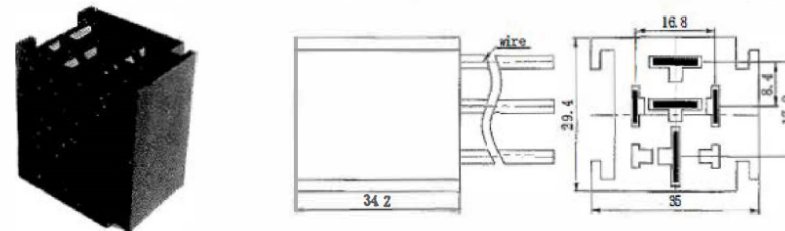
Appearance illustration (Unit: mm)



**Applicable relay type: FRC1 and FRC2

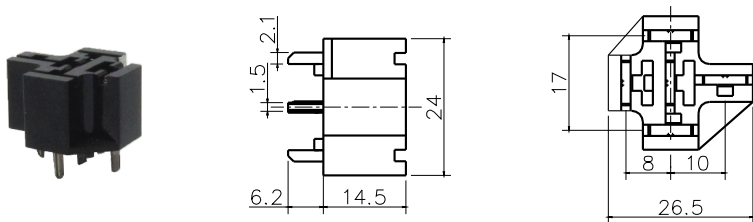
CS3-2CW

Terminal Layout 底视图 (Bottom View)



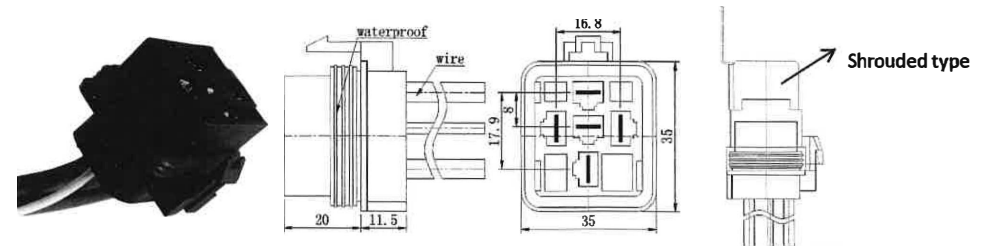
CS1-1A

Appearance illustration (Unit: mm)

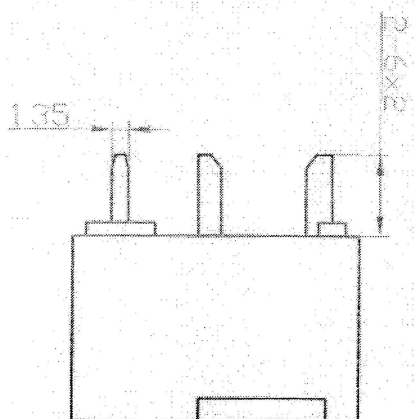
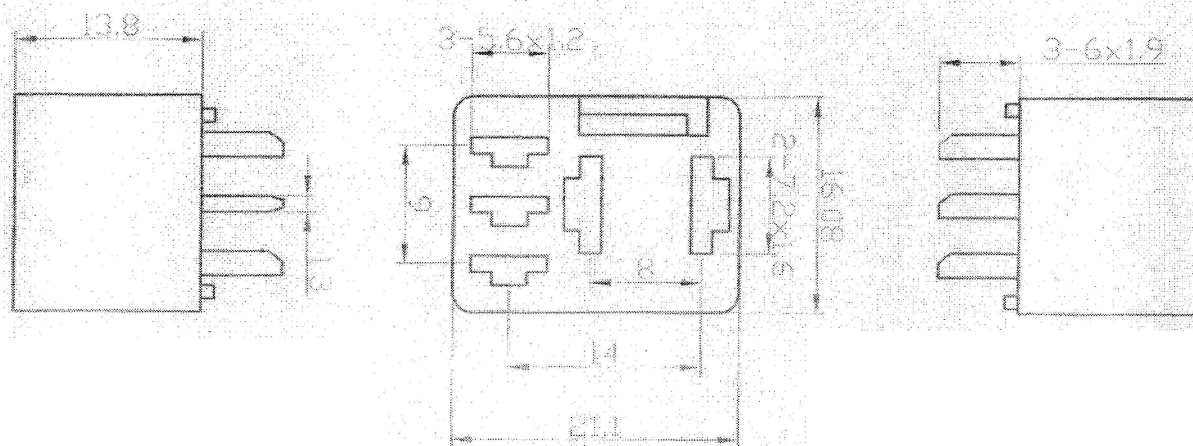


**Applicable relay type: FRC1 and FRC2 (with PCB pin)

CS4-CW



CS7-1A (CS4-1A)



CS7-4

