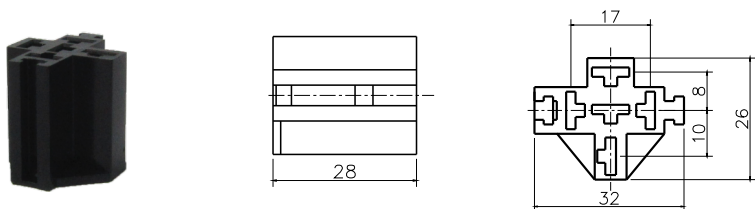


CS1

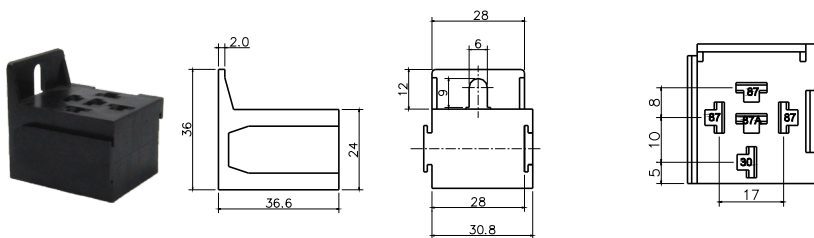
Appearance illustration (Unit: mm)



*Note: With 15mm wire (AWG#14): A Type: CS1-AW
B Type: CS1-CW
**Applicable relay type: FRC1 and FRC2 (with 15mm wire AWG#14)

CS1-4

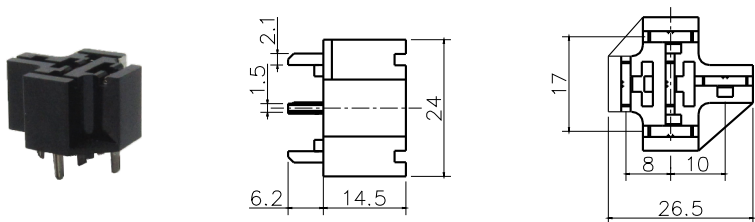
Appearance illustration (Unit: mm)



**Applicable relay type: FRC1 and FRC2

CS1-1A

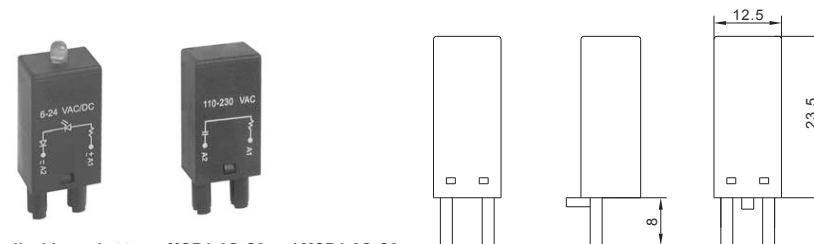
Appearance illustration (Unit: mm)



**Applicable relay type: FRC1 and FRC2 (with PCB pin)

Plug-in modules

Outline dimensions (Unit: mm)



**Applicable socket type: MSR1-1C-C3 and MSR1-2C-C3

Ordering code	Circuit diagram	Voltage	Components	Functions
FR-AA		6 to 230VDC	Diode	<ul style="list-style-type: none"> With diode to protect the coil and to eliminate the converse current
FR-AB		6 to 230VDC	Diode	<ul style="list-style-type: none"> With diode to protect the coil and to eliminate the converse current
FR-BC		6 to 24VDC	Diode LED Resistor	<ul style="list-style-type: none"> With diode to protect the coil and to eliminate the converse current With LED to show the coil in voltage
FR-BD		24 to 60VDC	Diode LED Resistor	<ul style="list-style-type: none"> With diode to protect the coil and to eliminate the converse current With LED to show the coil in voltage
FR-BE		110 to 230VDC	Diode LED Resistor	<ul style="list-style-type: none"> With diode to protect the coil and to eliminate the converse current With LED to show the coil in voltage

Ordering code	Circuit diagram	Voltage	Components	Functions
FR-CF		6 to 24VDC	Diode LED Resistor	<ul style="list-style-type: none"> • With diode to protect the coil and to eliminate the converse current • With LED to show the coil in voltage
FR-CG		24 to 60VDC	Diode LED Resistor	<ul style="list-style-type: none"> • With diode to protect the coil and to eliminate the converse current • With LED to show the coil in voltage
FR-CH		110 to 230VDC	Diode LED Resistor	<ul style="list-style-type: none"> • With diode to protect the coil and to eliminate the converse current • With LED to show the coil in voltage
FR-DI		6 to 24VDC	Capacitor Resistor	<ul style="list-style-type: none"> • With RC to protect the coil and to absorb instant starting surge current
FR-DJ		24 to 60VDC	Capacitor Resistor	<ul style="list-style-type: none"> • With RC to protect the coil and to absorb instant starting surge current
FR-DK		110 to 230VDC	Capacitor Resistor	<ul style="list-style-type: none"> • With RC to protect the coil and to absorb instant starting surge current
FR-EL		6 to 24V DC / AC	Diode LED Resistor	<ul style="list-style-type: none"> • With diode to protect the coil and to eliminate the converse current • With LED to show the coil in voltage

Ordering code	Circuit diagram	Voltage	Components	Functions
FR-EM		24 to 60V DC / AC	Diode LED Resistor	<ul style="list-style-type: none"> • With diode to protect the coil and to eliminate the converse current • With LED to show the coil in voltage
FR-EN		110 to 230V DC / AC	Diode LED Resistor	<ul style="list-style-type: none"> • With diode to protect the coil and to eliminate the converse current • With LED to show the coil in voltage
FR-FO		6 to 24V DC / AC	Diode LED Resistor Varistor	<ul style="list-style-type: none"> • With diode to protect the coil and to eliminate the converse current • With LED to show the coil in voltage • With varistor in parallel connection to absorb instant starting surge current
FR-FP		24 to 60V DC / AC	Diode LED Resistor Varistor	<ul style="list-style-type: none"> • With diode to protect the coil and to eliminate the converse current • With LED to show the coil in voltage • With varistor in parallel connection to absorb instant starting surge current
FR-FQ		110 to 230V DC / AC	Diode LED Resistor Varistor	<ul style="list-style-type: none"> • With diode to protect the coil and to eliminate the converse current • With LED to show the coil in voltage • With varistor in parallel connection to absorb instant starting surge current
FR-GR		24VAC	Varistor	<ul style="list-style-type: none"> • With varistor in parallel connection to absorb instant starting surge current
FR-GS		115VAC	Varistor	<ul style="list-style-type: none"> • With varistor in parallel connection to absorb instant starting surge current

Ordering code	Circuit diagram	Voltage	Components	Functions
FR-GT		230VAC	Varistor	<ul style="list-style-type: none"> • With varistor in parallel connection to absorb instant starting surge current
FR-HU		110 to 230VAC	Resistor	<ul style="list-style-type: none"> • With resistor to protect the coil and to spread around current
FR-JU		110 to 230V DC / AC	Diode LED Resistor	<ul style="list-style-type: none"> • With diode to protect the coil and to eliminate the converse current • With LED to show the coil in voltage
FR-JW		24 to 60V DC / AC	Diode LED Resistor	<ul style="list-style-type: none"> • With diode to protect the coil and to eliminate the converse current • With LED to show the coil in voltage
FR-JV		6 to 24V DC / AC	Diode LED Resistor	<ul style="list-style-type: none"> • With diode to protect the coil and to eliminate the converse current • With LED to show the coil in voltage
FR-FR		12 to 48V DC / AC	Diode LED Resistor Varistor	<ul style="list-style-type: none"> • With diode to protect the coil and to eliminate the converse current • With LED to show the coil in voltage • With varistor in parallel connection to absorb instant starting surge current