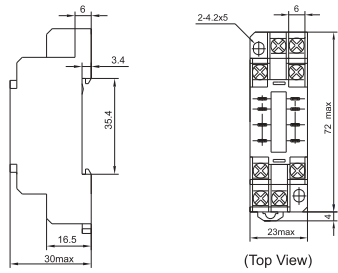




MSR3-2

Outline dimensions (Unit: mm)

PCB layout

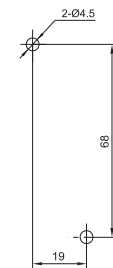
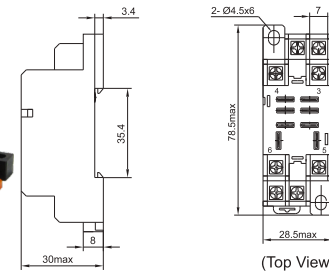


**Applicable relay type: FRM3 (2 poles)

MSR3W-2

Outline dimensions (Unit: mm)

PCB layout

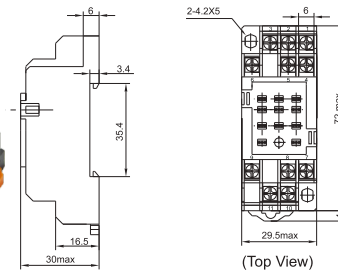
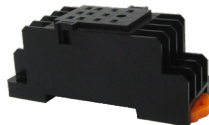


**Applicable relay type: FRM3W (2 poles)

MSR3-3

Outline dimensions (Unit: mm)

PCB layout

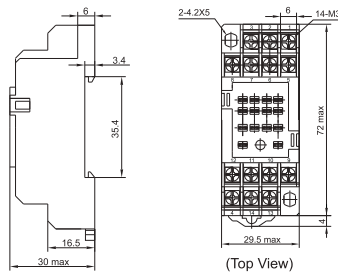


**Applicable relay type: FRM3 (3 poles)

MSR3-4

Outline dimensions (Unit: mm)

PCB layout



**Applicable relay type: FRM3 (4 poles)

