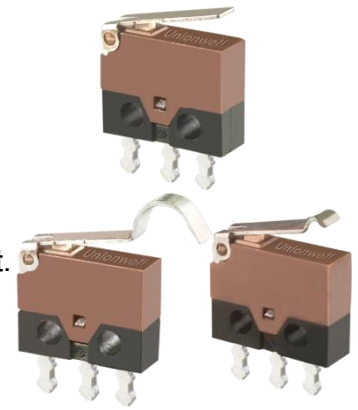


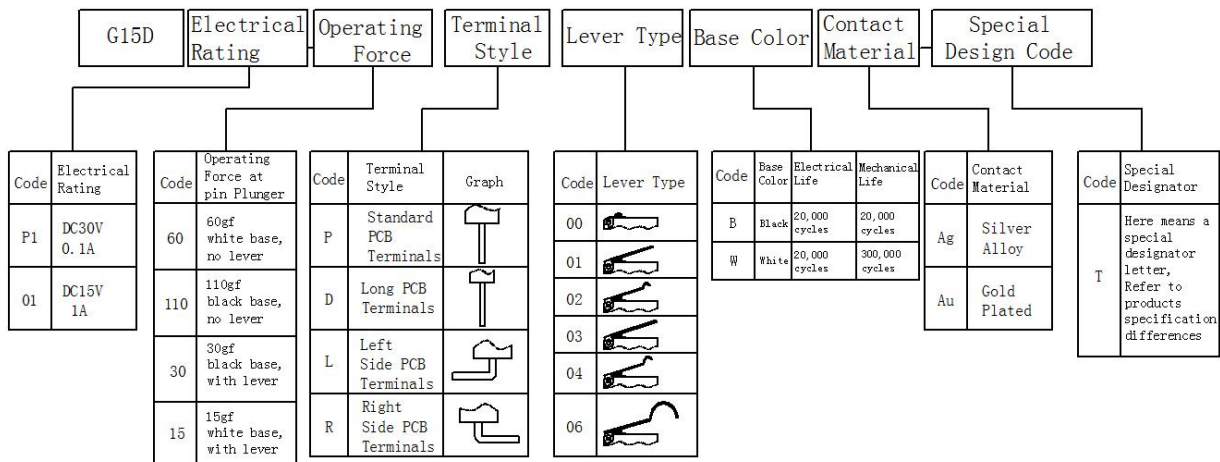
## Features

- Ultra-miniature, width-2.7mm, rating current load 0.1A~1A
- High precision spring plate construction to accomplish rapid switching, long life and excellent touch texture.
- Integrated moulding terminals structure preventing flux from not wicking.
- Multiple options of metal levers for use in the product structure design.
- Mechanical life exceeds 1 million cycles, higher life version available on request.
- Complied with ROSH requirements



## Ordering Instruction

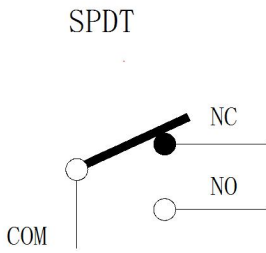
G15D(Metal Levers) Series Ultra-miniature Micro Switch:



## Model No.

Electrical Rating	Terminal Style	0.1A				1A			
		Standard PCB Terminals	Left Side PCB Terminals	Right Side PCB Terminals	Long PCB Terminals	Standard PCB Terminals	Left Side PCB Terminals	Right Side PCB Terminals	Long PCB Terminals
Lever Type		G15DP1-***P00	G15DP1-***L00	G15DP1-***R00	G15DP1-***D00	G15D01-***P00	G15D01-***L00	G15D01-***R00	G15D01-***D00
		G15DP1-***P01	G15DP1-***L01	G15DP1-***R01	G15DP1-***D01	G15D01-***P01	G15D01-***L01	G15D01-***R01	G15D01-***D01
		G15DP1-***P02	G15DP1-***L02	G15DP1-***R02	G15DP1-***D02	G15D01-***P02	G15D01-***L02	G15D01-***R02	G15D01-***D02
		G15DP1-***P03	G15DP1-***L03	G15DP1-***R03	G15DP1-***D03	G15D01-***P03	G15D01-***L03	G15D01-***R03	G15D01-***D03
		G15DP1-***P04	G15DP1-***L04	G15DP1-***R04	G15DP1-***D04	G15D01-***P04	G15D01-***L04	G15D01-***R04	G15D01-***D04
		G15DP1-***P06	G15DP1-***L06	G15DP1-***R06	G15DP1-***D06	G15D01-***P06	G15D01-***L06	G15D01-***R06	G15D01-***D06

## Circuit



## Contacts Specification

Model		1A Series	0.1A Series
Contact	Specification	Contact	
	Material	Gold Plated	Silver Alloy
	Space	0.35mm	
Min Electrical Rating (Reference Value)		DC5V 5mA	DC5V 50mA

## Rating

Model No.	1A Series	0.1A Series
Load Type	Resistive Load	
Electrical Rating	DC15V 1A	DC30V 0.1A

**Note:** The above rating value under the test of following setting parameters

- (1) Storage Temperature: 20±2°C
- (2) Storage Humidity : 65±5%RH
- (3) Operating Frequency 20 cycles/min

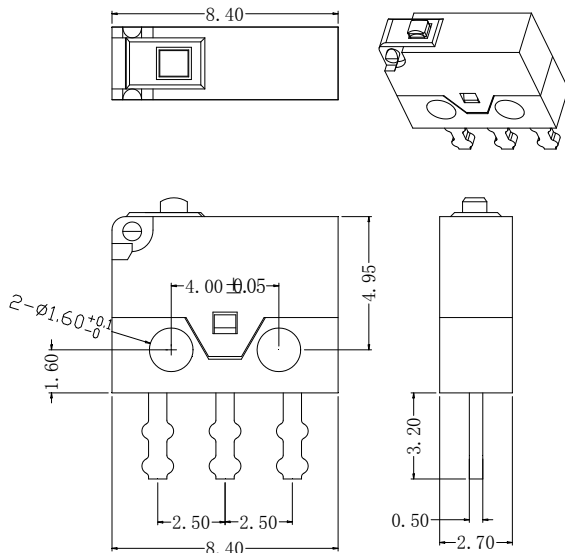
## Parameters

Series No.	G15DP1	G15D01	Customized
Operating Force	15gf 30gf 60gf 110gf		
Contacts	Silver Alloy	Gold Plated	
Electrical Rating	0.1A DC30V	1A DC15V	0.1A DC30V
Contact Resistance (Initial value)	100mΩ Max		
Operating Frequency	Mechanical: 60 cycles max Electrical: 20 cycles max		
Insulation Resistance	100MΩ Min (DC 500V)		
Voltage Resistance	AC250V 50/60Hz 1min		
Mechanical Life	20,000 cycles	300,000 cycles	1,000,000 cycles
Electrical Life	20,000 cycles	300,000 cycles	1,000,000 cycles
Storage Humidity	85% RH max at +40°C		
Operating Temperature Range	-40~+85°C		
Solder Ability	255±5°C 5s		
Protection Type	IP40		
Unit Net Weight	Approx 0.3g		

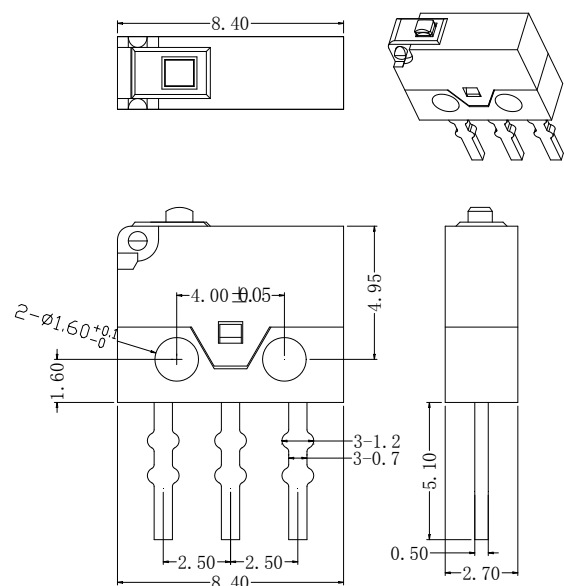
Note: Mechanical life test under 150gf operating force

## Switch Terminals Types (Unit: mm)

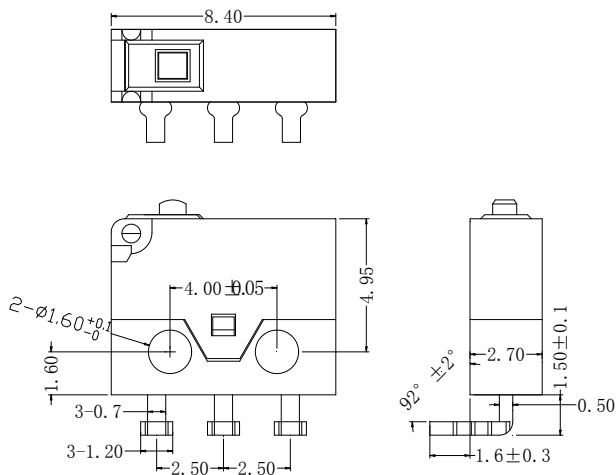
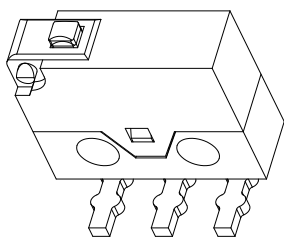
### Standard PCB Terminals (Type P)



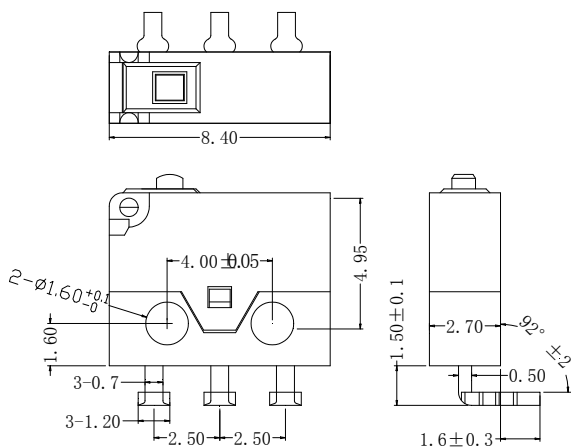
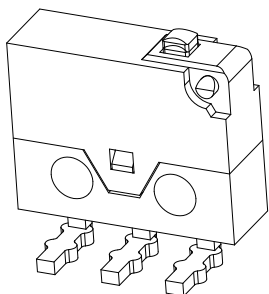
### Long PCB Terminals (Type D)



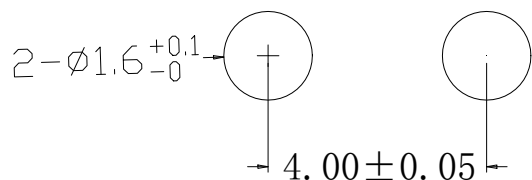
● Left Side PCB Terminals(Type L)



● Right Side PCB Terminals(Type R)

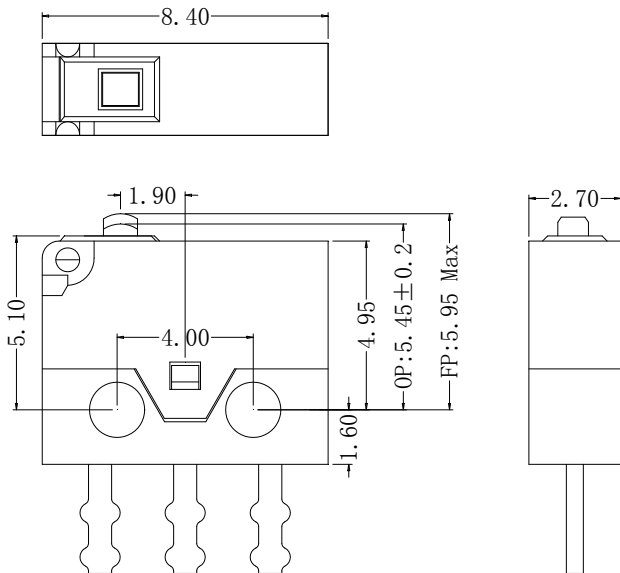
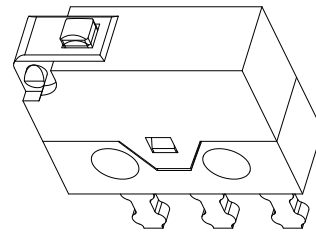


■ Mounting Holes Dimensions (mm)



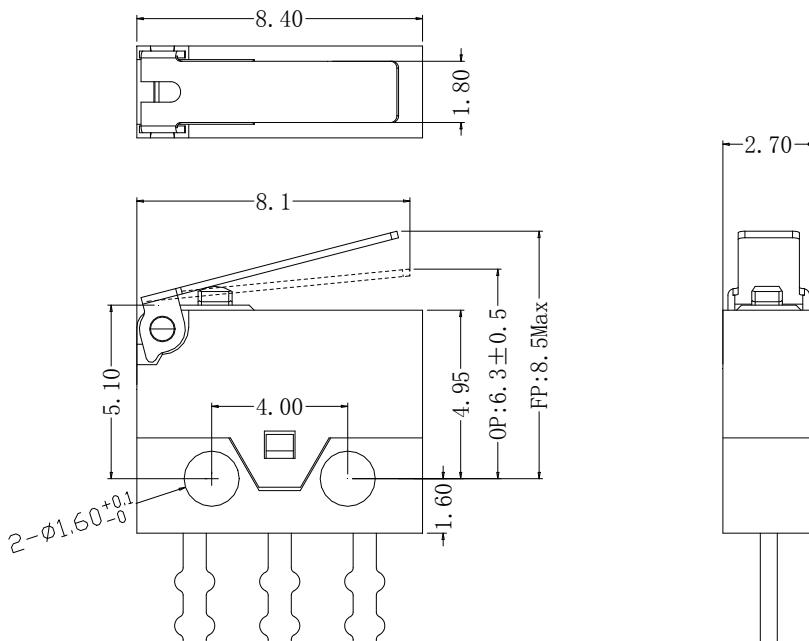
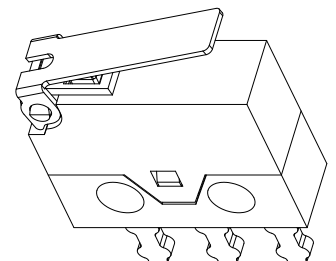
■ Dimensions (mm) And Operating Parameters

● No Lever Pin Plunger Series  
(Dimensions with Optional Curved/Long Terminals)



Operating Force (OF)	60gf 110gf
Release Force (RF)	15gf Min
Pre-travel (PT)	0.3 Max
Over-travel (OT)	0.35 Max
Movement-Differential (MD)	0.2 Max
Free Position (FP)	5.95 Max
Operating Position(OP)	5.45±0.2
Mechanical Life	50,000 cycles 300,000 cycles 1,000,000 cycles
	1A 10,000 cycles
	0.5A 20,000 cycles
Mechanical Life	0.1A 50,000 cycles
	0.1A 300,000 cycles
	0.1A 1,000,000 cycles

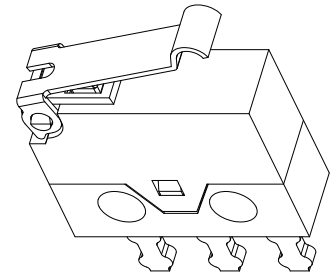
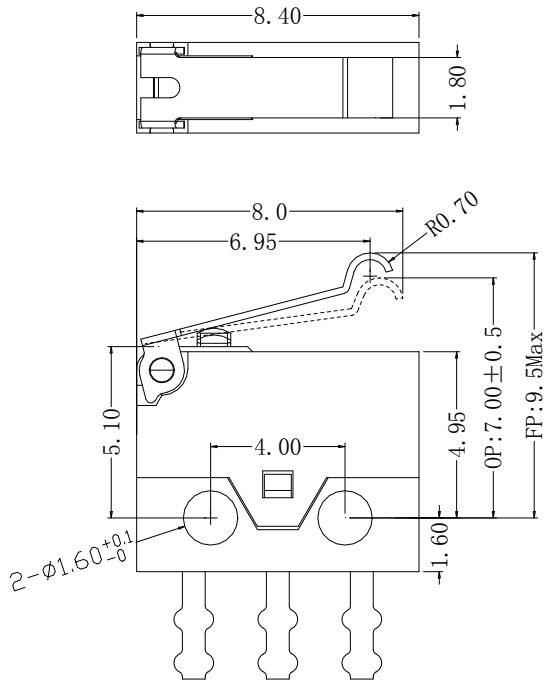
● Hinge Lever Series  
(Dimensions with Optional Curved/Long Terminals, Mounting Posts)



Operating Force (OF)	50gf max
Release Force (RF)	5gf Min
Pre-travel (PT)	1.1Max
Over-travel (OT)	0.9 Max
Movement-Differential (MD)	0.3 Max
Free Position (FP)	8.5 Max
Operating Position(OP)	6.3±0.5
Mechanical Life	50,000 cycles 300,000 cycles 1,000,000 cycles
	1A 10,000 cycles
	0.5A 20,000 cycles
Mechanical Life	0.1A 50,000 cycles
	0.1A 300,000 cycles
	0.1A 1,000,000 cycles

● Simulated Roller R0.7 Series

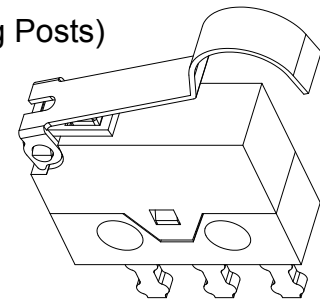
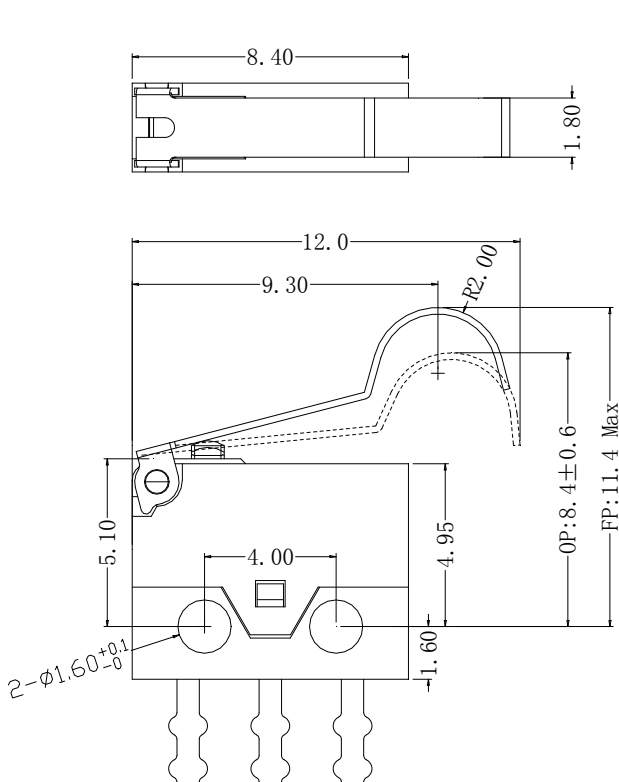
(Dimensions with Optional Curved/Long Terminals, Mounting Posts)



Operating Force (OF)	50gf max
Release Force (RF)	5gf Min
Pre-travel (PT)	1.1 Max
Over-travel (OT)	1.0 Max
Movement-Differential (MD)	0.4 Max
Free Position (FP)	9.5 Max
Operating Position (OP)	7.0 ± 0.5
Mechanical Life	50,000 cycles
	300,000 cycles
	1,000,000 cycles
Mechanical Life	1A 10,000 cycles
	0.5A 20,000 cycles
	0.1A 50,000 cycles
	0.1A 300,000 cycles
	0.1A 1,000,000 cycles

● Simulated Roller R2.0 Series

(Dimensions with Optional Curved/Long Terminals, Mounting Posts)



Operating Force (OF)	50gf max
Release Force (RF)	5gf Min
Pre-travel (PT)	1.6 Max
Over-travel (OT)	1.0 Max
Movement-Differential (MD)	0.5 Max
Free Position (FP)	11.4 Max
Operating Position (OP)	8.4 ± 0.6
Mechanical Life	50,000 cycles
	300,000 cycles
	1,000,000 cycles
Mechanical Life	1A 10,000 cycles
	0.5A 20,000 cycles
	0.1A 50,000 cycles
	0.1A 300,000 cycles
	0.1A 1,000,000 cycles