



## G303A/B Series

### Subminiature Sealed Micro Switch

#### ■ Features

- Designed for water and dust tight (IP67)
- Small Copact Size
- Global safety approved, customer designs
- Long range and high reliability
- Wide range of wiring terminals
- Variety of levers
- Widely used in automotive electronics appliance and industrial control
- Variety of shapes

#### ■ Application

- ◆Car
- ◆Electric tool brush
- ◆Air-Conditioner
- ◆Toys
- ◆Communication
- ◆Bicycle

#### ■ Parameters

Rating		0. 1A/125VAC;3A/12VDC;0. 1A/250VAC;0. 1A/48VDC u 1E5.
Operating Frequency	Electrical	0. 1A-120 cycles/minute;3A-10 <sup>3</sup> cycles/minute
	Mechanical	120 cycles/minute
Contact Resistance (Initiative)		100M ΩMax
Insulation Resistance (at 500VDC)		100M ΩMin
Vibration durability		10 <sup>3</sup> ~55Hz, move 0. 75mm (p-p)
Dielectric Strength		500VAC (50 <sup>3</sup> 60Hz)
Storage Temperature		-40 <sup>3</sup> +85 <sup>3</sup> C
Storage Humidity		85% RH Max
Service Life	Electrical	100, 000 cycles
	Mechanical	Min. 500, 000 cycles

#### ■ Switch IP rated

G303A IP67



G303B IP40

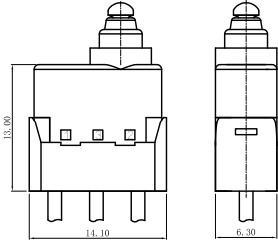
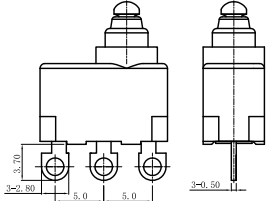
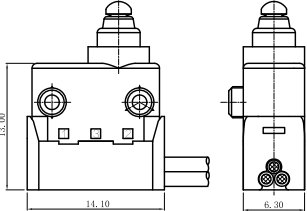
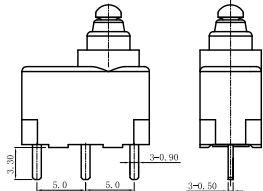
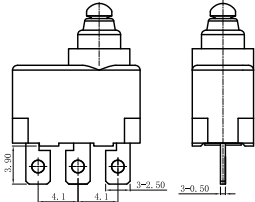
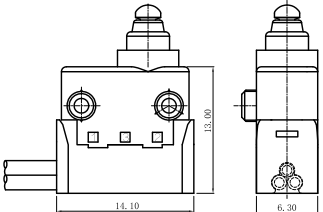
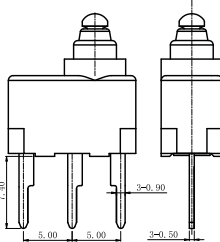
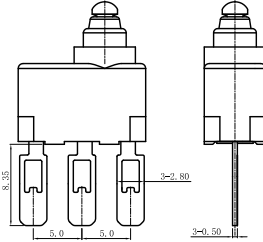
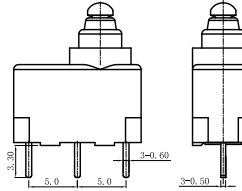


## G303A/B Series Micro Switch Ordering Instruction

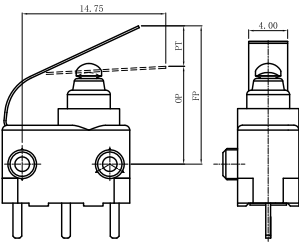
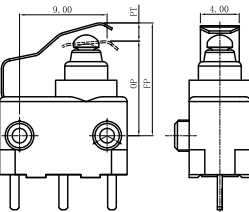
G3	03	A	180	K	00	A
Switch Type	Electrical Rating	Switch Protection Level	Operating Force at pin plunger, Max	Terminal Style	Lever Type	Circuit Code
G3 Series Micro-Switch	0.1A 125/250VAC 03 48VDC; 3A 12VDC a 1E5	A IP67	180 180gf Max	E Molded lead wires downwards	00 No lever Pin Plunger	A SPST
		B IP40	130 130gf Max	G Molded lead wires on left side (plunger side)	03 03#straight lever	B SPST-NC
				F Molded lead wires on right side (plunger side)	38 38#lever	C SPST-NO
				K Long solder terminals	... Other	
				I Big Solder terminals		
				P Straight PCB terminals (0.9mm width)		
				R Right side PCB terminals		
				L Left side PCB terminals		
				J Long straight PCB terminals		
				C 2#long solder terminals		
		D 2#straight PCB terminals (0.6mmwidth)				
		S Solder terminals				
		... Other				

20		A		E		A		280		TXXX	
Shape and Posts		Posts Dimension		AWG Type (for Wire type only)		AWG Number (for Wire type only)		Wires length		Custom code	
20	Waterproof two sides posts	A	No Post		No molded lead wires		No molded lead wires		300mm length standard lead wires		General
21	C2 type no post	B	φ2.95×5.0mm posts	E	20# (Only for the bottom Outlet switch)	A	UL1007	280	280mm length	TXXX	Custom code
22	C2 type Left posts	C	φ2.95mm×1.5mm posts	F	22#	F	AVSS	...	Other	...	Other
23	C2 type right posts	...	Other	G	24#	L	FLRY-A				
24	dustproof no post			...	Other	...	Other				
25	D2 type left side posts										
26	D2 type right side posts										
27	D2 type two side posts										
...	Other										

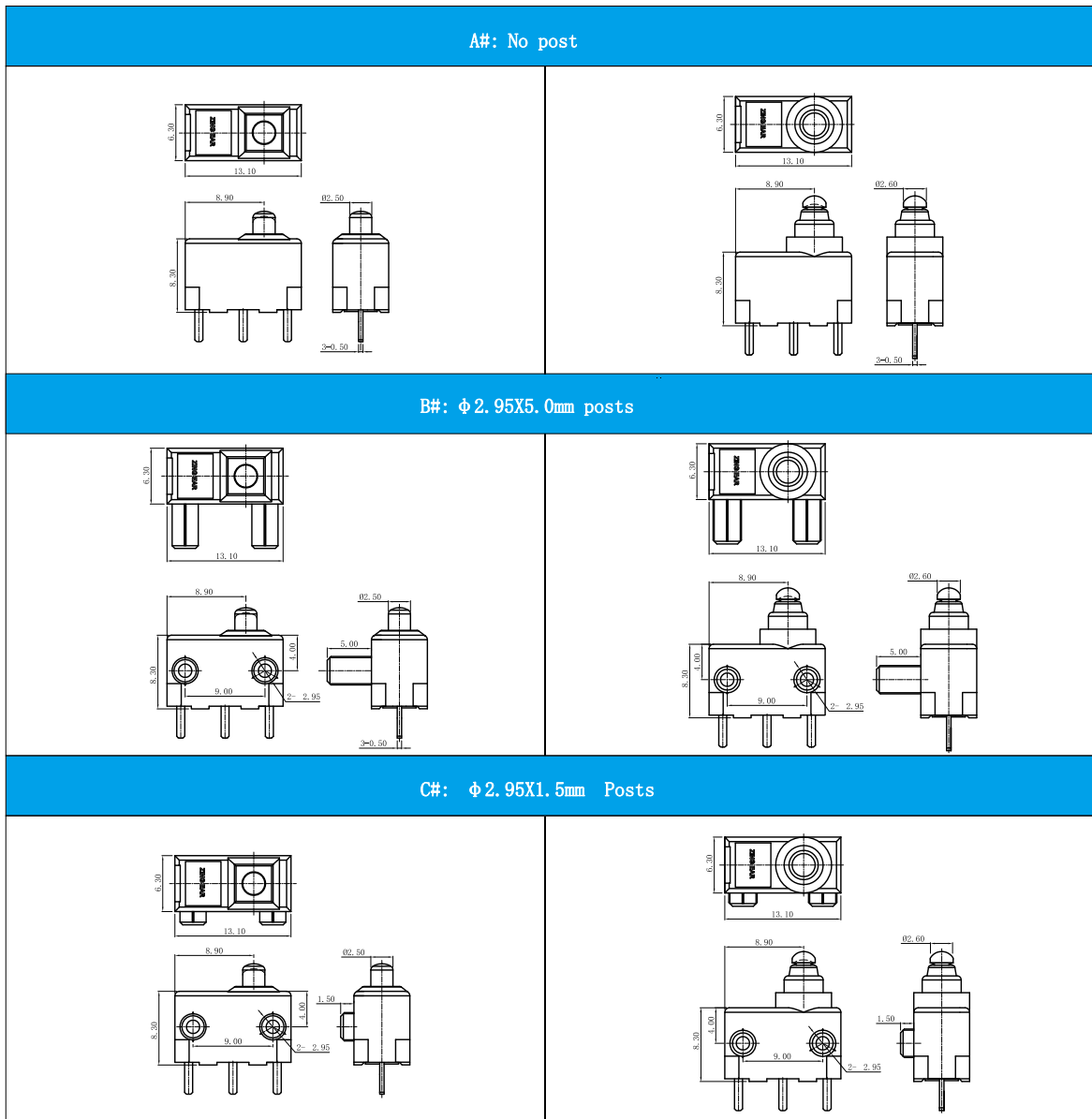
## Terminal Style

E#: Wires leads to bottom	I#: Solder Terminals	G#: Wires leads to plunger side
		
P#: Straight PCB Terminals	K#: Long Solder Terminals	F#: Wires leads to opposite to plunger side
		
J#: Left and right straight PCB terminals	C#: 2 # Long Solder terminals	D#: Straight PCB Terminals
		

## Lever Type

03#: lever	38#: lever
	

## ■ Posts Dimension



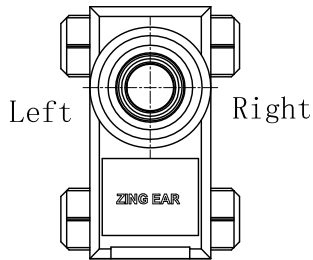
## Contact Configuration

A#: SPDT	B#: SPST-NC	C#: SPST-NO

## Mounting Hole and Operating Characteristics

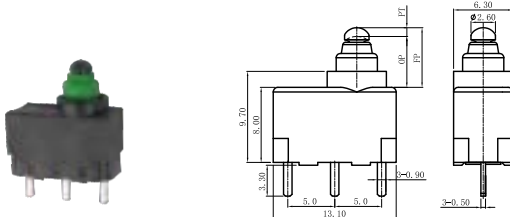
G303A/G303A Series	G303B/G303B Series
<p>Mounting Hole Dimensions</p>	<p>Mounting Hole Dimensions</p>

## Posts direction define



## Dimensions and Operating Characteristics

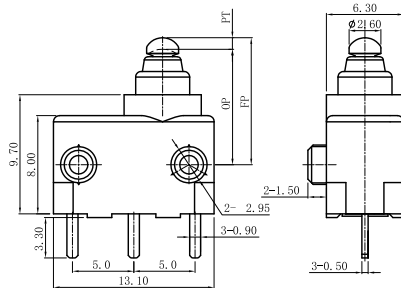
### ◆ G303A-180P00A21A



OF Max. (gf)	RF Min. (gf)	PT Max. (mm)	OT Min. (mm)	DT Max. (mm)	FP Max. (mm)	OP (mm)
-180	180	20	1.5	0.7	0.4	6.35
						5.4±0.3

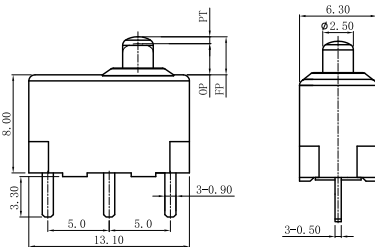
## Dimensions and Operating Characteristics

◆ G303A-180P00A23C



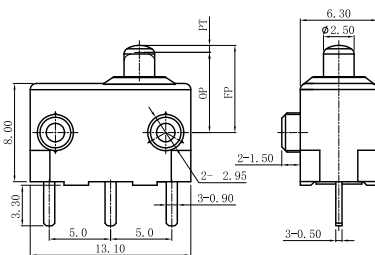
OF Max. (gf)	RF Min. (gf)	PT Max. (mm)	OT Min. (mm)	DT Max. (mm)	FP Max. (mm)	OP (mm)
-180	180	20	1.5	0.7	0.4	10.35

◆ G303B-130P00A24A



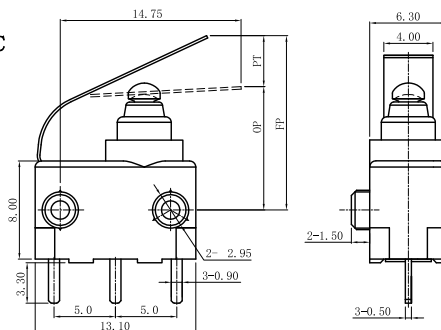
OF Max. (gf)	RF Min. (gf)	PT Max. (mm)	OT Min. (mm)	DT Max. (mm)	FP Max. (mm)	OP (mm)
-130	130	8	1.5	0.7	0.4	3.3

◆ G303B-130P00A26C



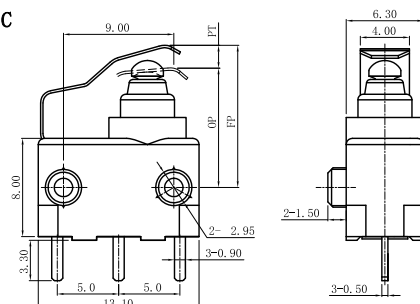
OF Max. (gf)	RF Min. (gf)	PT Max. (mm)	OT Min. (mm)	DT Max. (mm)	FP Max. (mm)	OP (mm)
-130	130	8	1.5	0.7	0.4	7.3

◆ G303A-180P03A23C



OF Max. (gf)	RF Min. (gf)	PT Max. (mm)	OT Min. (mm)	DT Max. (mm)	FP Max. (mm)	OP (mm)
-180	250	50	5.5	0.7	1.1	14

◆ G303A-180P38A23C



OF Max. (gf)	RF Min. (gf)	PT Max. (mm)	OT Min. (mm)	DT Max. (mm)	FP Max. (mm)	OP (mm)
-180	250	50	2	0.7	1.1	12