

## G304B Sub-Miniature Micro Switch



### Features

- High reliability and good resistance to environment, sealed micro switch with long travel
- With long travel, can work excently even without lever
- High reliability sliding contact structure
- With high temperature resistance(+85 ° C) and drip-proof structure, can be widely applied in different environments, IP67 rated (except for terminals)
- Widely applied for home appliances, electronic equipments, automatic equipments, communication equipments, auto electronics, apparatus and instruments, electrical tools etc.

### Application

- Home Appliance
- Electronic Equipments
- Automatic Equipments
- Communication Equipments
- Auto Electronics
- Apparatus and Instruments
- Power Tools

### Parameters:

|                                  |                                             |                                                              |
|----------------------------------|---------------------------------------------|--------------------------------------------------------------|
| Operation Speed                  |                                             | 1~500mm/s                                                    |
| Operation Frequency              |                                             | 120 cycles /min                                              |
| Insulation Resistance            |                                             | $\geq 100M\Omega$ (DC 500V)                                  |
| Contact Resistance(Intial Value) | with terminals type                         | $\leq 100m\Omega$                                            |
|                                  | with wire type                              | $\leq 200m\Omega$                                            |
| Voltage Resistance               | Between terminals                           | AC600V, 50/60HZ, 1min.                                       |
|                                  | Between terminals and uncharged metal parts | AC1500V, 50/60HZ, 1min.                                      |
| Service Life                     | Electrical                                  | 300000 cycles(20 cycles/min)<br>0.1A 12V DC 50 $\mu$ A 5V DC |
|                                  | Mechanical                                  | 300,000 cycles (30 cycles/min)                               |
| Storage Temperature              |                                             | -40~85° C                                                    |
| Storage Humidity                 |                                             | 85% RH Max                                                   |

G304B Series Micro Switch Ordering Instruction

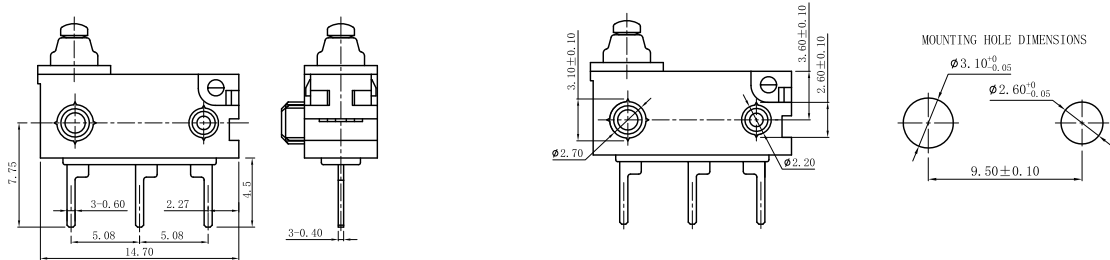
|                                               |                                    |                                       |                                                                                                        |                                   |                                                                                                      |                                           |
|-----------------------------------------------|------------------------------------|---------------------------------------|--------------------------------------------------------------------------------------------------------|-----------------------------------|------------------------------------------------------------------------------------------------------|-------------------------------------------|
| G304B                                         | 150                                | P                                     | 00                                                                                                     | C                                 | 2                                                                                                    | XXXX                                      |
| Switch Type                                   | Max Operating Force at Pin Plunger | Terminal Type                         | Lever Type                                                                                             | Circuit code                      | assemble Type                                                                                        | Custom code                               |
| G304B SeriesMicro Switch Ordering Instruction | 150 150gf Max<br>... Other         | P Straight PCB Terminals<br>... Other | 00 No Lever Pin Plunger<br>01 Leaf Lever<br>02 Straight Leaf Lever<br>05 Simulated Roller<br>... Other | A SPDT<br>B SPST-NC<br>C SPST -NO | 1 NO assemble boss<br>2 $\phi$ 3.1X5.0mm assemble boss at left side<br>3 assemble boss at right side | General<br>XXXX Custom model<br>... Other |

# Unionwell

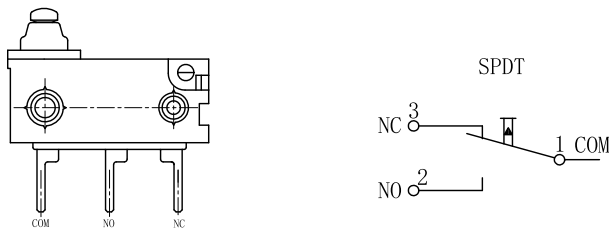
## Terminals Type

## Basic Mounting Dimensions and Operating Characteristics

### ◆ Straight PCB Terminals

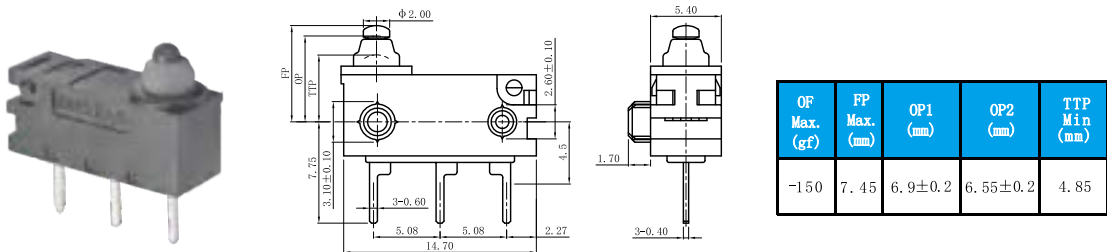


## Circuit

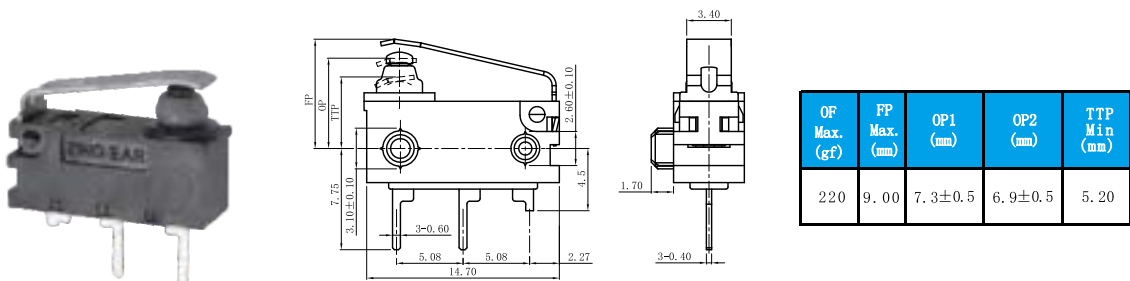


## Dimensions and Operating Characteristics

### ◆ G304B-150P00A2

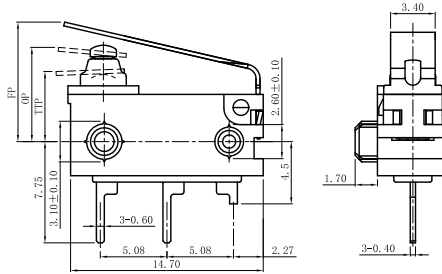


### ◆ G304B-150P01C2



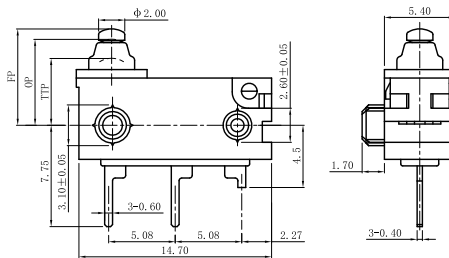
## Dimensions and Operating Characteristics

### ◆ G304B-150P02C2



| OF Max. (gf) | FP Max. (mm) | OP1 (mm) | OP2 (mm) | TTP Min (mm) |
|--------------|--------------|----------|----------|--------------|
| 200          | 10.20        | 7.60±0.6 | 7.25±0.6 | 5.00         |

### ◆ G304B-150P00C2



| OF Max. (gf) | FP Max. (mm) | OP1 (mm) | OP2 (mm) | TTP Min (mm) |
|--------------|--------------|----------|----------|--------------|
| 150          | 7.45         | 6.9±0.2  | 6.55±0.2 | 4.85         |