

G304 (F-Type) Sub-miniature Micro Switch



■ Features

- Designed For Water and Dust Tight (IP67)
- Small Compact Size
- Long Life and High Reliability
- Variety of Levers
- Wide Range of Wiring Terminals
- Widely used in Automotive Electronics, Appliance and Industrial Control etc.
- Customized Designs
- Slide Structure
- Non Short Circuit Conversion

■ Application

- ◆Car
- ◆Air-Comditioner
- ◆Communication
- ◆Electric Tooth Brush
- ◆Toys

■ Parameters

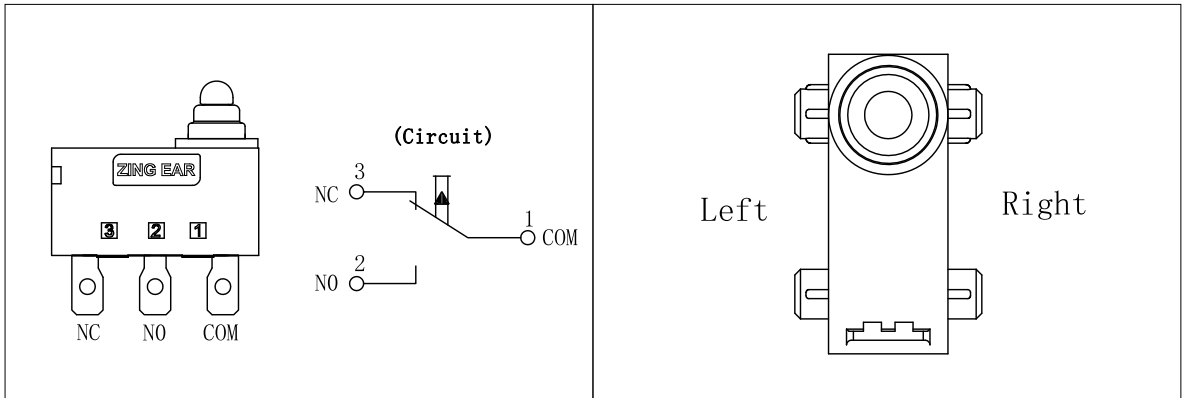
Operation Speed		1~500mm/s
Operating Frequency		120 cycles /min
Insutation Resistance		≥100MΩ (DC 500V)
Contact Resistance (Intial Value)	with terminals type	≤100mΩ
	with wire type	≤500mΩ (300mm length)
Voltage Resistance	Between terminals	AC500V, 50/60HZ, 1min.
	Between terminals and uncharged metal parts	AC1000V, 50/60HZ, 1min.
Vibration	No transformation action	10-55HZ
Service Life	Electrical	300000 cycles (20cycles /min) DC12V 0.1A DC3V 50μA
	Mechanical	300,000 cycles (30cycles /min)
Protection Level		IEC IP67
Storage Temperature		-40~+85°C 60%RH
Storage Humidity		95%RH (+5~+35°C)

G304 F-Type Series Micro Switch Ordering Instruction

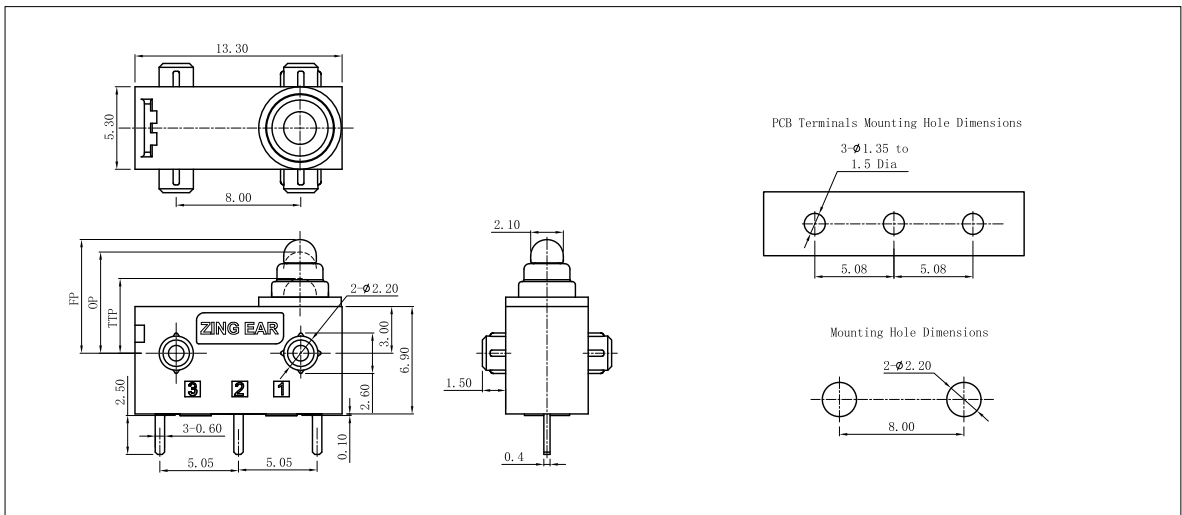
G3	04	150	P	00	E	39	Posts Dimension	G	A	280	Special Designator
Switch Type	Electrical Rating	Operating Force at pin Plunger Max	Terminal Style	Lever Type	Circuit Code	Shape and Posts	Posts Dimension	AWG Type (for Wire type only)	AWG Number (for Wire type only)	Wires Length	Special Designator
G3 Series - Micro Switch	0.1A 120VAC 50/60A 3VDC	80 80gf Max.	Straight PCB Terminals	No Lever Pin Plunger	Slide Non-short circuit Type, 1-3 Convert (0,1,2,3P)	F Type, no post	Standard posts: 2.60mmx5.0mm	No molded lead wires	No molded lead wires	300mm length standard lead wires 300mm	S Special code
	... Other	150 150gf Max.	Long solder Terminals	W Type Straight Leaf Lever	G Slide Non-short circuit Type 3 (0,1,2,3P)	F Type left posts	G Φ 2.6X1.5mm posts.	A ULL1007	A ULL1007	280 280mm length	B Molded lead wires on left side
		... Other	Straight PCB Long Straight PCB Terminals	Straight Leaf Lever	B Slide Type SFST-NC	F Type right posts	H Φ 2.6X2.0mm posts.	C ULL1450	C ULL1450	... Other	C Molded lead wires on left side
			... Other	... Other	C Slide Type SFST-NO	F Type two sides posts	I Φ 2.2X0.8mm posts.	D ULL061	D ULL061		E Molded lead wires on Bottom
					... Other	F Type long then, two sides posts	K 7.3X1.2X1.2mm posts.	E ULL350	E ULL350		... Other
						... Other	... Other	F AVSS	F AVSS		
								H ULL332	H ULL332		
								G ULL312	G ULL312		
								... Other	... Other		
								... Other	... Other		

■ Circuit

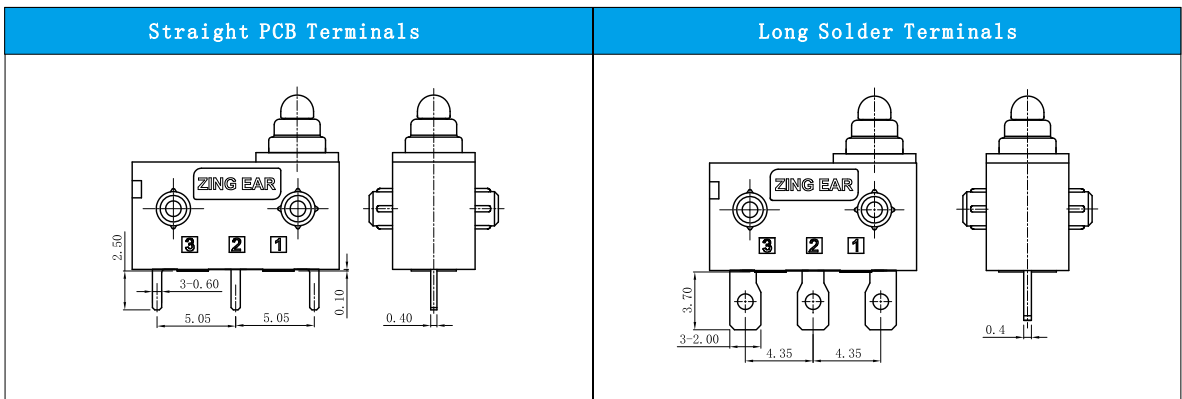
■ Posts direction define



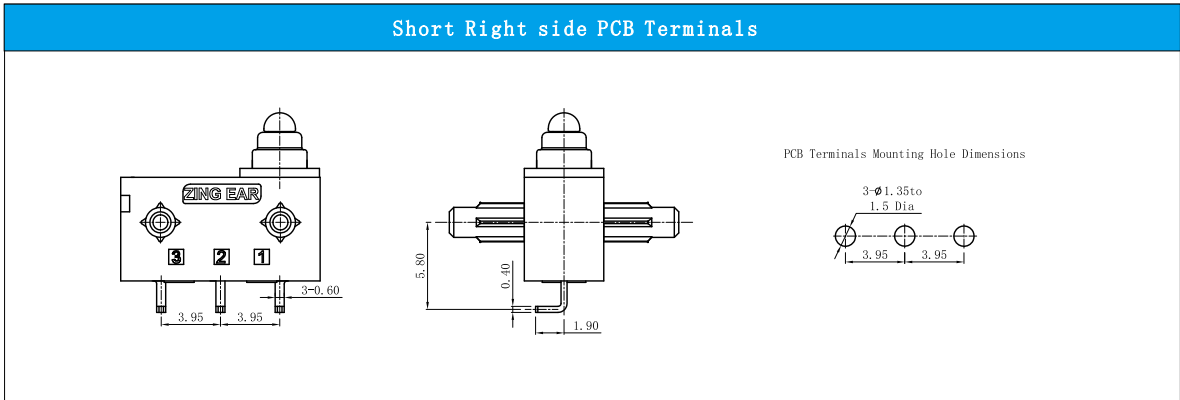
■ Basic Mounting Dimensions and Operating Characteristics



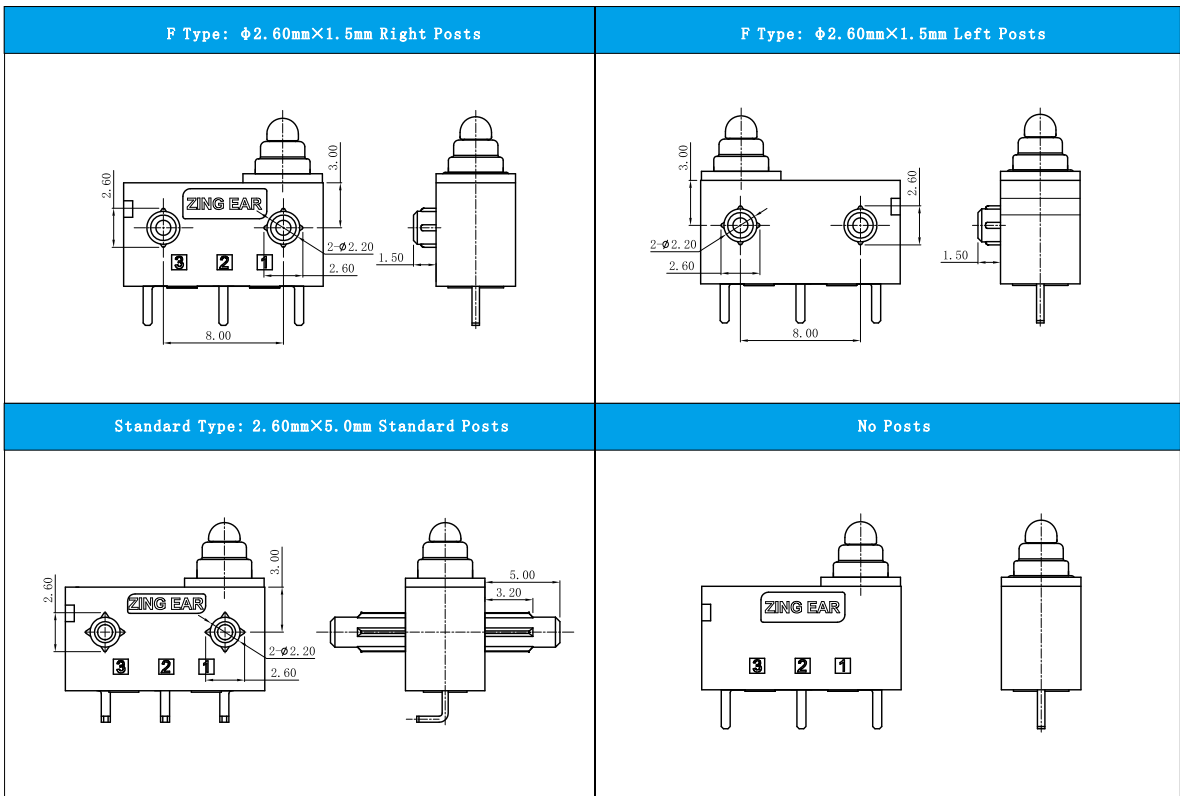
■ Switch Terminals Type (Can be customized)



Switch Terminals Type (Can be customized)

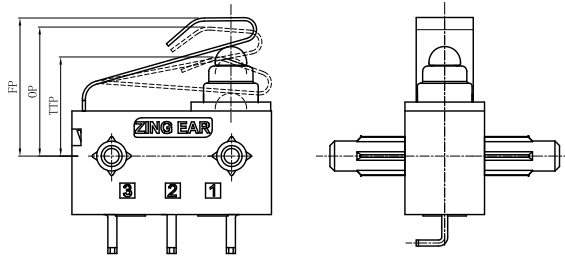


Posts Type



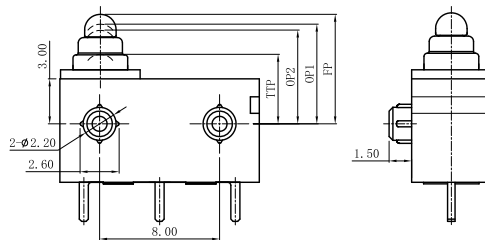
■ Dimensions and Operating Characteristics

◆ G304-150W26D46



OF Max (gf)	TTP Min (mm)	FP Max (mm)	OP (mm)
300	6.6	9.8	8.6 (+0.5, -0.35)

◆ G304-150P00D36G



OF Max (gf)	TTP Min (mm)	FP Max (mm)	OP-NC (mm)	OP-NO (mm)
150	4.8	7.9	6.8 ± 0.3	6.5 ± 0.3