

## G304 (G-Type) Sub-miniature Micro Switch



### ■特点/Features

- Designed For Water and Dust Tight (IP67)
- Small Compact Size
- Long Life and High Reliability
- Variety of Levers
- Wide Range of Wiring Terminals
- Widely used in Automotive Electronics, Appliance and Industrial Control etc.
- Customized Designs
- Slide Structure
- Non Short Circuit Conversion

### ■Application

- ◆Car
- ◆Air-Conditioner
- ◆Communication
- ◆Electric Tooth Brush
- ◆Toys

### ■Parameters

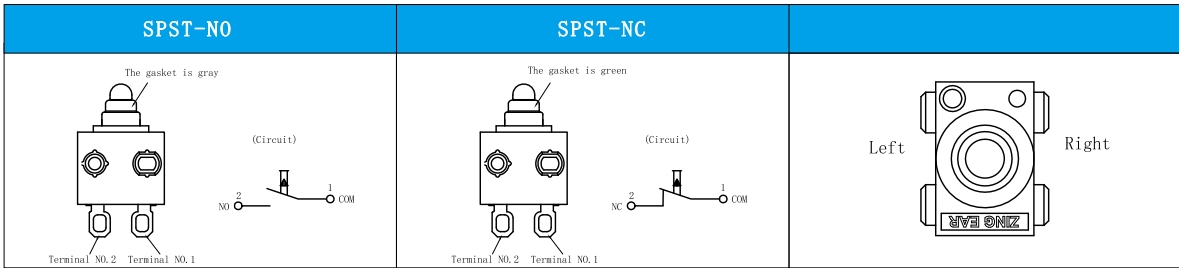
Operation Speed	1~500mm/s	
Operating Frequency	120cycles /min	
Insulation Resistance	$\geq 100\Omega$ (DC 500V)	
Contact Resistance (Initial Value)	with terminals type	$\leq 100\Omega$
	with wire type	$\leq 500\Omega$ (300mm)
Voltage Resistance	Between terminals	AC500V, 50/60HZ, 1min.
	Between terminals and uncharged metal parts	AC1000V, 50/60HZ, 1min.
Vibration	No transformation action	10~55HZ
Service Life	Electrical	300000 cycles (20 cycles /min) DC12V 0.1A DC3V 50 $\mu$ A
	Mechanical	300,000 cycles (30 cycles /min)
Protection Level	IEC IP67	
Storage Temperature	-40~+85°C 60%RH	
Storage Humidity	95%RH (+5~+35°C)	

## G304 G-Type Series Micro Switch Ordering Instruction

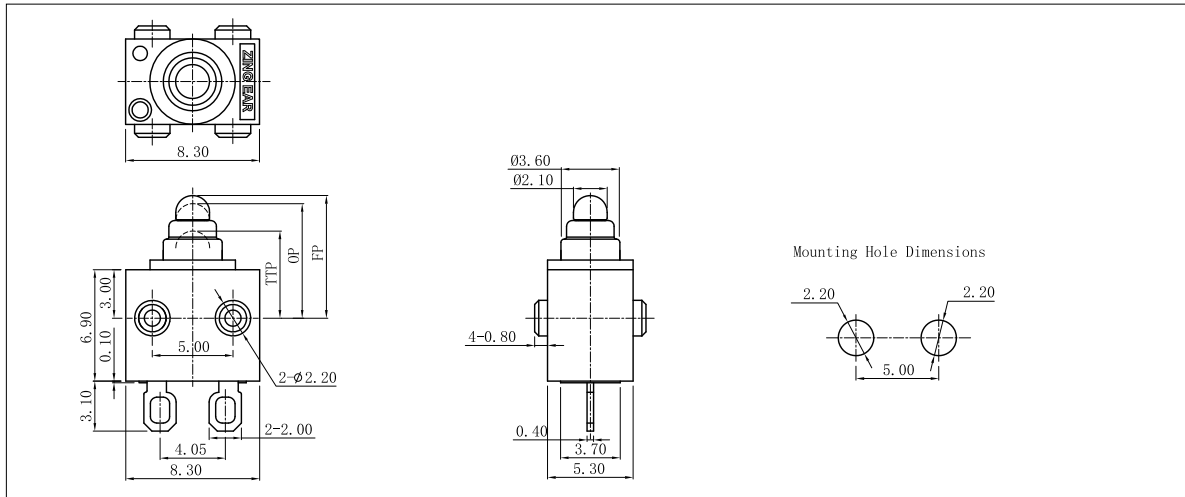
G3	04	150	U	00	E	39	Posts Dimension	ANS Type (for wire type only)	A	280	Special Designator
Switch Type	Electrical Rating	Overvoltage, Reverse at pin Plunger, Max	Terminal Style	Lever Type	Circuit Code	Shape and Posts	Posts Dimension	ANS Type (for wire type only)	ANS Number (for wire type only)	Wires Length	Special Designator
G3 Series - Micro Switch	04 0.1A, 120VAC 500A, 300C	80 80gf Max	U Straight PCB Terminals with two pins V Solder Terminals with to pins M Short Solder Terminals P Straight PCB Terminals S Short Solder Terminals with hole	00 No/over Pin Plunger ... Other	E Slide Type SPST-NO F Slide Type SPST-NC ... Other	39 G type no post 40 G type left posts 41 G type right posts 42 G type two sides posts 43 G type length two sides posts 44 G type revers left posts 48 G type rectangle one sides posts ... Other	F Standard posts: 2.50mmx5.0mm G $\phi$ 2.6X1.5mm posts. H $\phi$ 2.6X2.0mm posts. I $\phi$ 2.2X0.5mm posts. K 7.3X1.2X1.2mm posts. ... Other	No molded lead wires E 20# F 22# G 24# H 26# I 28# J 30# K 32# L 34# ... Other	No molded lead wires A UL1007 C UL1430 D UL1001 E UL1330 F AVSS H UL1332 G UL3132 ... Other	300mm length standard lead wires: 300mm 280 280mm length ... Other	S Special code B Molded lead wires on left side C Molded lead wires on left side E Molded lead wires on bottom ... Other

## ■Circuit

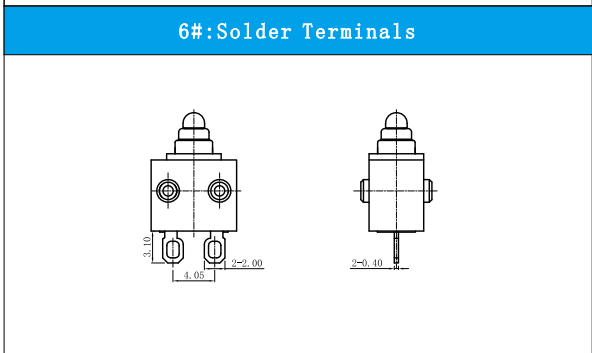
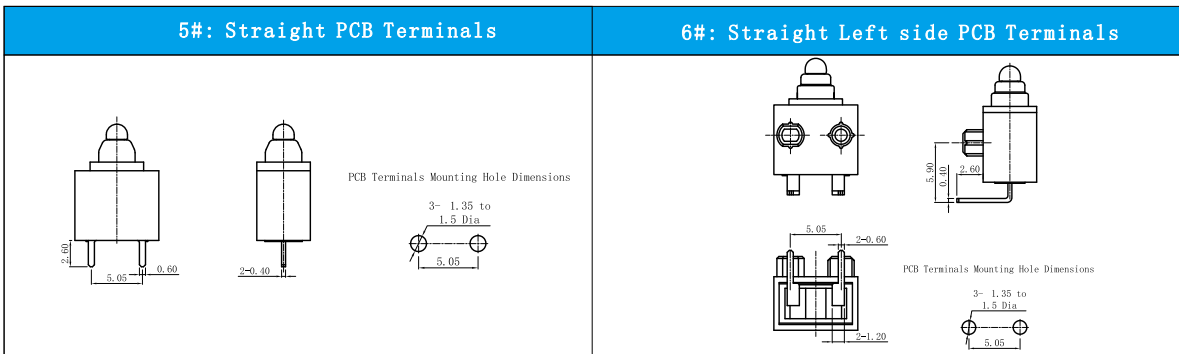
## ■Post direction define



## ■Basic Mounting Dimensions and Operating Characteristics



## ■Switch Terminal Type (can be customized)



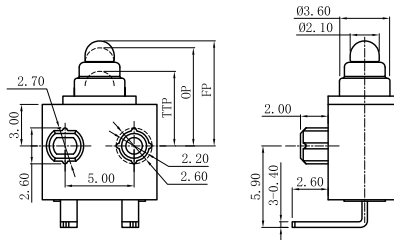
# Unionwell

## ■ Posts Type

Standard Type: $\phi$ 2.60mm $\times$ 5.0mm left posts	H Type: $\phi$ 2.60mm $\times$ 2.0mm left posts	G Type: $\phi$ 2.60mm $\times$ 1.5mm reverse left posts
I Type: $\phi$ 2.20mm $\times$ 0.8mm two sides posts	G Type rectangle one side posts	no posts

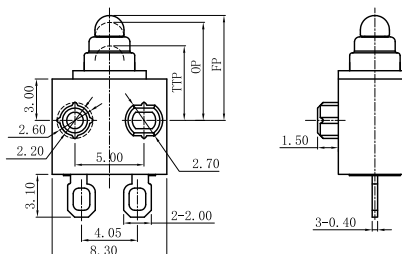
## ■ Dimenstions ang Operating Characteristics

### ◆ G304-150U00E40H



OF Max. (gf)	TTP Max. (mm)	FP Max. (mm)	OP (mm)
150	5.3	7.9	7.1 $\pm$ 0.5

### ◆ G304-150V00F44G

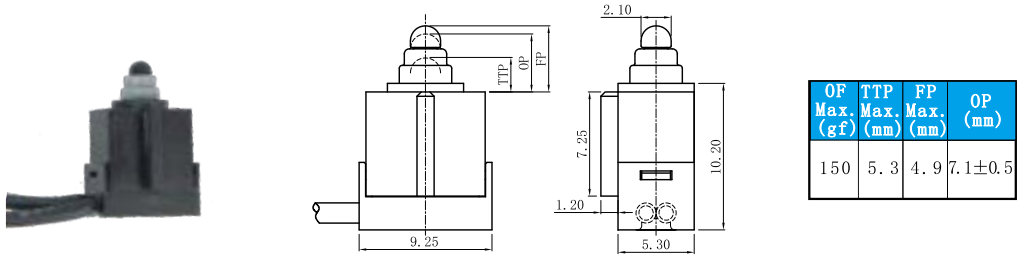


OF Max. (gf)	TTP Max. (mm)	FP Max. (mm)	OP (mm)
150	5.3	7.9	7.1 $\pm$ 0.5

# Unionwell

## ■ Dimensions and Operating Characteristics

### ◆ G304-150M00E48-□□□□□B



### ◆ G304-150M00E40H-□□□□□C

