

G9A/G9B Sub-Miniature Micro Switch

3.5mm Travel Micro Switch



■ Features

- G9A Dust and Water Proof (IP67)/G9B Dust Proof (IP40)
- Small Compact Size
- Long Life and High Reliability
- Variety of Terminals
- Variety of Levers Optional
- Long Over travel of 2.20mm Minimum
- Widely used in Auto Control, Appliance and Other industry Control

■ Application

- ◆ Auto Electronics
- ◆ Home Appliance
- ◆ Apparatus and Instruments

■ Parameters:

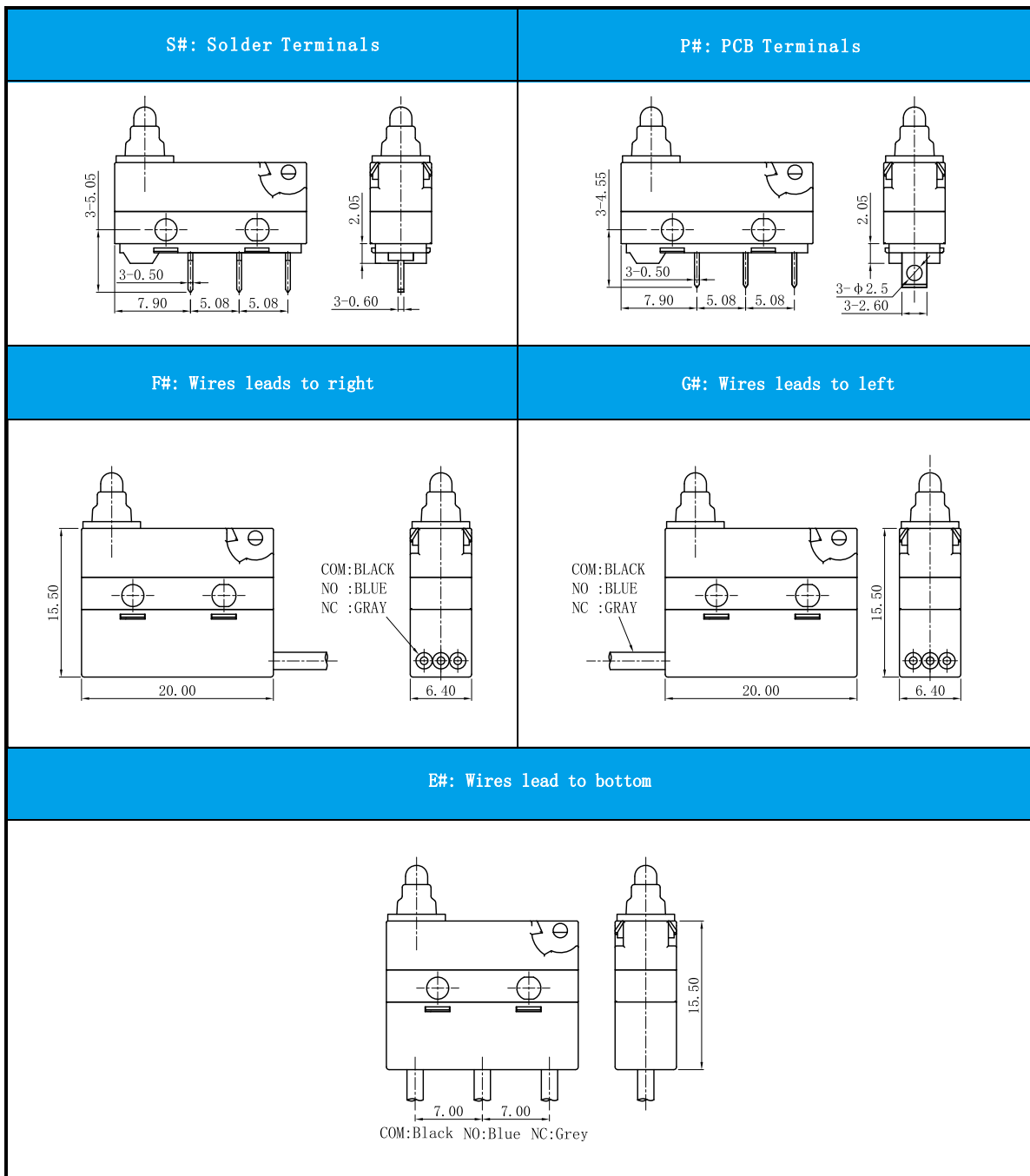
| | | |
|------------------------------------|---|--|
| Rating | P1 | 0.1A 125/250VAC, 0.1A 30VDC |
| | 05 | 5(2)A 125/250VAC, 5A 30VDC |
| Operating Frequency | Electrical | 10~30 cycles/minute |
| | Mechanical | 120 cycles/minute |
| Contact Resistance (Initial Value) | With terminals type | ≤100mΩ |
| | With wire type | ≤200mΩ (500mm) |
| Insulation Resistance (at 500VDC) | | ≥100MΩ (DC 500V) |
| Voltage Resistance | Between terminals | AC 500V, 50/60HZ, 1min |
| | Between terminals and uncharged metal parts | AC 1000V, 50/60HZ, 1min |
| Service Life | Electrical | 50,000 cycles |
| | Mechanical | 200,000 cycles (IP67) 2000,000 cycles (IP40) |
| Storage Temperature | | -40~+85°C |
| Storage Humidity | | 95% RH Max |

G9A/G9B Series Micro Switch Ordering Instruction

| G9A | 05 | 200 | S | 01 | A | F | 300 | T001 | U |
|---|--|------------------------------------|--|-------------------------|--------------|--------------------------------|---|-------------|-------------|
| Switch Type | Electrical Rating | Max Operating Force at Pin Plunger | Terminal Type | Lever Type | Circuit code | Waterproof code | Wires length (AWG Number UL1007 AWG Type 20#) | Custom code | Logo |
| G9A IP67 G9B IP40 Series-Micro Switch | ENEC/CQC: 0.1A 125/250VAC 30VDC P: 40T85 μ 5E4 UL/CUL: 0.1A 125/250VAC 30VDC | 200 200gf Max | S Solder Terminals | 00 No Lever Pin Plunger | A SPDT | Low pressure injection molding | 500mm length standard lead wires 500mm | T001 | ZING EAR |
| | ENEC/CQC: 5(2)A 125/250VAC 30VDC 05 40T85 μ 5E4 UL/CUL: 5A 125/250VAC 30VDC | ... Other | P Straight PCB Terminals | 01 01 Plunger | B SPST-NC | Waterproof shell | 300mm length | ... Other | U Unionwell |
| | ... Other | | E Molded lead wires downwards | ... Other | C SPST-NO | ... Other | ... Other | ... Other | ... Other |
| | | | F Molded Lead Wires Leads to right Side (Opposite to Pin plunger side) | | | | | | |
| | | | G Molded Lead Wires Leads to left Side (Pin plunger side) | | | | | | |
| | | | ... Special Terminals | | | | | | |

Terminal Type

Terminal thickness: 0.5mm



Mounting Hole and Operating Characteristics

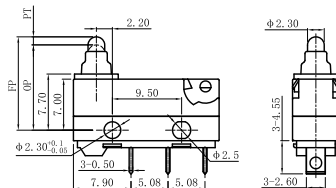
| Mounting Hole Dimension | Mounting Hole Dimension of PCB Terminals |
|--|--|
| <p>2-ϕ 2.3mm mounting holes or M2.2 screw holes</p> <p>9.50 ± 0.15</p> | <p>3-ϕ 1.35~1.5dia</p> <p>2.60 9.50 ± 0.15</p> <p>2.55 5.08 5.08</p> |

Circuit

| | SPDT | SPST-NC | SPST-NO |
|--|------|---------|---------|
| | | | |

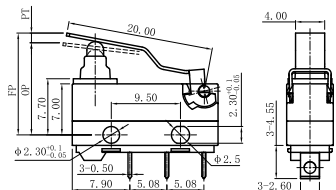
Dimensions and Operating Characteristics

◆G9A□□-□□□S00A



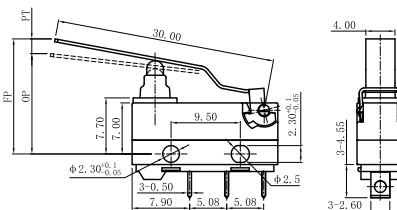
| OF Max. (gf) | RF Min. (gf) | PT Max. (mm) | OT Min. (mm) | DT Max. (mm) | FP Max. (mm) | OP (mm) |
|--------------|--------------|--------------|--------------|--------------|--------------|---------|
| -200 | 200 | 20 | 1.7 | 2.2 | 0.9 | 13.0 |

◆G9A□□-□□□S01A



| OF Max. (gf) | RF Min. (gf) | PT Max. (mm) | OT Min. (mm) | DT Max. (mm) | FP Max. (mm) | OP (mm) |
|--------------|--------------|--------------|--------------|--------------|--------------|---------|
| -200 | 200 | 20 | 2.9 | 2.2 | 1.0 | 14.5 |

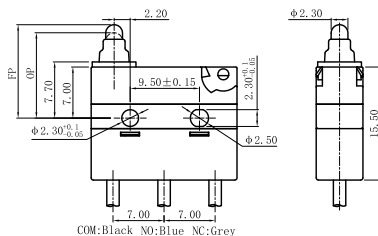
◆G9A□□-□□□S02A



| OF Max. (gf) | RF Min. (gf) | PT Max. (mm) | OT Min. (mm) | DT Max. (mm) | FP Max. (mm) | OP (mm) |
|--------------|--------------|--------------|--------------|--------------|--------------|---------|
| -200 | 150 | 20 | 4.0 | 2.9 | 1.3 | 16.5 |

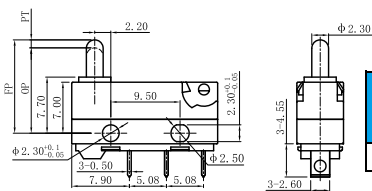
■ Dimensions and Operating Characteristics

◆ G9A□□-□□□E00A



| OF Max. (gf) | RF Min. (gf) | PT Max. (mm) | OT Min. (mm) | DT Max. (mm) | FP Max. (mm) | OP (mm) |
|--------------------|--------------------|--------------------|--------------------|--------------------|--------------------|------------|
| -200 | 200 | 20 | 1.7 | 2.2 | 0.9 | 13 |

◆ G9B□□-□□□S00A



| OF Max. (gf) | RF Min. (gf) | PT Max. (mm) | OT Min. (mm) | DT Max. (mm) | FP Max. (mm) | OP (mm) |
|--------------------|--------------------|--------------------|--------------------|--------------------|--------------------|------------|
| -200 | 200 | 20 | 1.7 | 2.2 | 0.9 | 13.0 |