

GQ12 series

the installation aperture is Φ 12mm;

- ☆ the switch is "self recovery | slow action | single pole single throw";
- ☆ the biggest features of this series are "bright colors" and "small volume";
- ☆ the buttons are available in 7 colors: red, green, blue, orange, yellow, white and black (only for zinc aluminum alloy shell products);
- ☆ the shell is made of brass, stainless steel and zinc aluminum alloy, and the shortest distance from the panel to the end of the product is only 12.9mm which greatly meets the various needs of users;
- ☆ the waterproof grade of the product is IP65 / IP67.



GQ12 series model description

GQ12★-10◆/△/▲/○

Symbol	Symbol name	Specify
★	Head shape	B: spherical / S: square / G: High spherical
10	Contact Structure	10: 1NO
◆	Wiring type	J: Wiring patch / No letters means terminals
	Colour	R: Red / G: Green / Y: Yellow / B: Blue / W: White
	Voltage	6V / 12V / 24V All have built-in resistors, other voltage levels can be customized, and external resistors are required
	Housing Material	N: Nickel plating on brass / S: Stainless steel / A: Zinc aluminum alloy (Black) / T: Zinc aluminum alloy (White)

Note: Please read the catalog carefully, and choose the right part-number according to the sign.

Performance Characteristic

Operating Temp	-25°C~+55°C (Non freezing) Keep the switch air circulating well
Operating Humidity	45~85% RH(Non condensing)
Contact Resistance	≤50mΩ
Insulation Resistance	≥100MΩ (500VDC)
Max. withstanding voltage	1500VAC, 50Hz, 1min
Vibration resistance	50Hz, The amplitude is about 1.2mm
Solder heat resistance	320°C 3s
Switch rating	2A/36VDC
Mechanical Life	1,000,000 cycles
Electrical Life	200,000 cycles
Nut torque	About 0.3Nm
Torque	About 3.5N
Operation Travel	About 2mm
Protection class	IP65(IP67 can be customized), IK08

Standards and certification

Corresponding standard	Certification mark	Certification authority / certification number
EN61058-1:2018	CE	UDEM/M.2021.206.C62197

Switch structure description

Type	Diagram	Symbol
X		

LED Specifications

LED life	Current	Allowable voltage fluctuation range	Circuit diagram
≥40000 hours	≤24V about 15mA	DC: ± 10%	<p>The product has built-in protective resistance, and the lamp bead wiring has no distinction between positive and negative poles.</p>

GQ12

 <p>GQ12B-10/0</p>	<p>Contact Structure 1NO Operation type Momentary Housing Material N Nickel plating on brass / S Stainless steel Wiring type Terminals Protection class IP65(IP67 can be customized), IK08 Applicable accessories M12-12</p>	
 <p>GQ12B-10/J/0</p>	<p>Contact Structure 1NO Operation type Momentary Housing Material N Nickel plating on brass / S Stainless steel Wiring type Wiring patch(2x0 5mm) Protection class IP65(IP67 can be customized), IK08 Applicable accessories M12-12</p>	
 <p>GQ12B-10/Δ/A</p>	<p>Contact Structure 1NO Operation type Momentary Button cover color Δ R G Y B W N Housing Material Zinc aluminum alloy (Black) Wiring type Terminals Protection class IP65(IP67 can be customized), IK08 Applicable accessories M12-12</p>	
 <p>GQ12B-10/J/Δ/A</p>	<p>Contact Structure 1NO Operation type Momentary Button cover color Δ R G Y B W N Housing Material Zinc aluminum alloy (Black) Wiring type Wiring patch(2x0 5mm) Protection class IP65(IP67 can be customized), IK08 Applicable accessories M12-12</p>	
 <p>GQ12S-10/Δ/0</p>	<p>Contact Structure 1NO Operation type Momentary Button cover color Δ R G Y B W N Housing Material A: Zinc aluminum alloy (Black) / T: Zinc aluminum alloy (White) Wiring type Terminals Protection class IP65(IP67 can be customized), IK08</p>	
 <p>GQ12S-10/J/Δ/0</p>	<p>Contact Structure 1NO Operation type Momentary Button cover color Δ R G Y B W N Housing Material A: Zinc aluminum alloy (Black) / T: Zinc aluminum alloy (White) Wiring type Wiring patch(2x0 5mm) Protection class IP65(IP67 can be customized), IK08</p>	

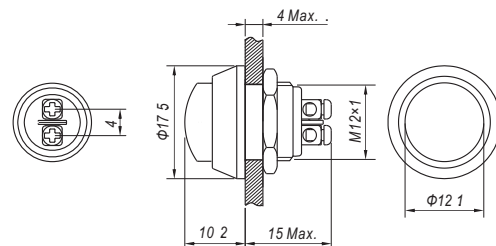


GQ12



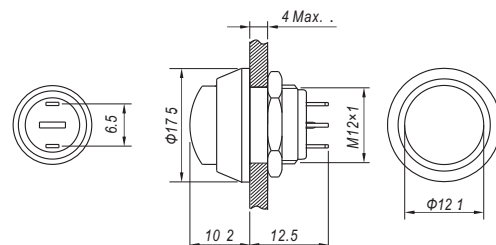
GQ12G-10/△/A

Contact Structure 1NO
Operation type Momentary
Button cover color △ R G Y B W N
Housing Material Zinc aluminum alloy (Black)
Wiring type Terminals
Protection class IP65(IP67 can be customized), IK08



GQ12G-10/JI/△/A

Contact Structure 1NO
Operation type Momentary
Button cover color △ R G Y B W N
Housing Material Zinc aluminum alloy (Black)
Wiring type Wiring patch(2x0.5mm)
Protection class IP65(IP67 can be customized), IK08



GQ12B-10/JI/△/PA

Contact Structure 1NO
Operation type Momentary
Button cover color △ R G Y B W N
Housing Material PA
Wiring type Wiring patch(2x0.5mm)
Protection class IP65(IP67 can be customized), IK08

