

GQ12-A series

the installation aperture is $\Phi 12\text{mm}$;

- ☆ the switch is "self recovery | slow action | single pole single throw";
- ☆ the products have complete types of lamps (single point, ring and power symbols);
- ☆ the product has two kinds of heads: low flat and high flat, which can be selected by users;
- ☆ the waterproof grade of the product is IP65 / IP67.

GQ12-A series model description

GQ12 - A - / / / /

Symbol	Symbol name	Specify
★	Head shape	F: Flat round / H: High round
	Contact Structure	10: 1NO / No digital means indicator
◇	Illuminated Type	D: Dot illuminated / E: Ring illuminated / DT: Ring+power symbol illuminated / No letters mean no lights
◆	Wiring type	J: Wiring patch
	Color	R: Red / G: Green / Y: Yellow / B: Blue / W: White
	Voltage	6V / 12V / 24V All have built-in resistors, other voltage levels can be customized, and external resistors are required
	Housing Material	C: Brass chrome plating / S: Stainless steel / A: Zinc aluminum alloy (Black)

Note: Please read the catalog carefully, and choose the right part-number according to the sign.

Performance Characteristic

Operating Temp	-25°C~+55°C (Non freezing) Keep the switch air circulating well
Operating Humidity	45~85% RH(Non condensing)
Contact Resistance	$\leq 50\text{m}\Omega$
Insulation Resistance	$\geq 100\text{M}\Omega$ (500VDC)
Max. withstanding voltage	1500VAC, 50Hz, 1min
Vibration resistance	50Hz, The amplitude is about 1.2mm
Solder heat resistance	320°C 3s
Switch rating	2A/36VDC
Mechanical Life	500,000 cycles
Electrical Life	200,000 cycles
Base material	PA
Nut torque	About 0.3Nm
Torque	About 1.5N
Operation Travel	About 1.5mm
Protection class	IP65(IP67 can be customized), IK07

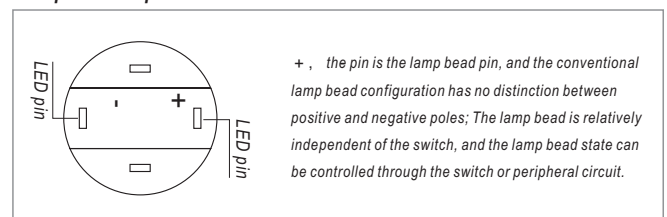
Switch structure description

Type	Diagram	Symbol
X		

LED Specifications

LED life	Current	Allowable voltage fluctuation range	Circuit diagram
≥ 40000 hours	$\leq 24\text{V}$ about 15mA	DC: $\pm 10\%$	 <small>The product has built-in protective resistance, and the lamp bead wiring has no distinction between positive and negative poles.</small>

LED pin description



Standards and certification

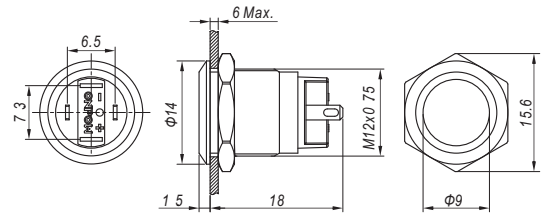
Corresponding standard	Certification mark	Certification authority / certification number
EN61058-1:2018		UDEM/M.2021.206.C62197

GQ12-A



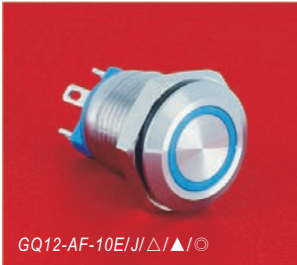
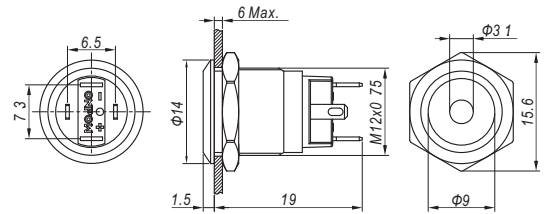
GQ12-AF-10/JI ○

Contact Structure 1NO
Operation type Momentary
Housing Material C: Brass chrome plating / S: Stainless steel / A: Zinc aluminum alloy (Black)
Wiring type Wiring patch(2x0.5mm)
Protection class IP65(IP67 can be customized), IK07
Applicable accessories M12-12F



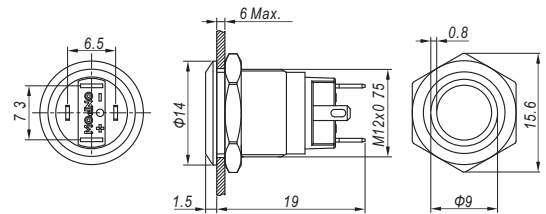
GQ12-AF-10D/JI ▲/▲/○

Contact Structure 1NO
Operation type Momentary
LED color △ R G Y B W
Voltage 6V/12V/24V
Housing Material C: Brass chrome plating / S: Stainless steel
Wiring type Wiring patch(2x0.5mm)
Protection class IP65(IP67 can be customized), IK07
Applicable accessories M12-12F



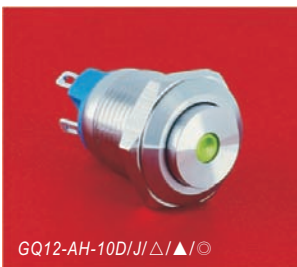
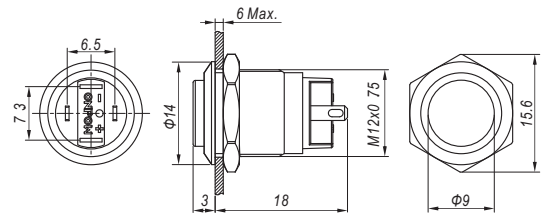
GQ12-AF-10E/JI ▲/▲/○

Contact Structure 1NO
Operation type Momentary
LED color △ R G Y B W
Voltage 6V/12V/24V
Housing Material C: Brass chrome plating / S: Stainless steel / A: Zinc aluminum alloy (Black)
Wiring type Wiring patch(2x0.5mm)
Protection class IP65(IP67 can be customized), IK07
Applicable accessories M12-12F



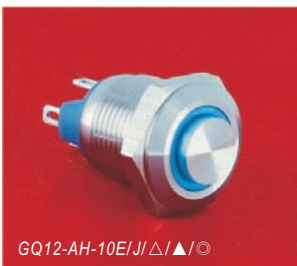
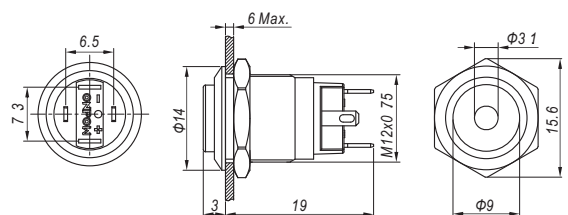
GQ12-AH-10/JI ○

Contact Structure 1NO
Operation type Momentary
Housing Material C: Brass chrome plating / S: Stainless steel
Wiring type Wiring patch(2x0.5mm)
Protection class IP65(IP67 can be customized), IK07
Applicable accessories M12-12H



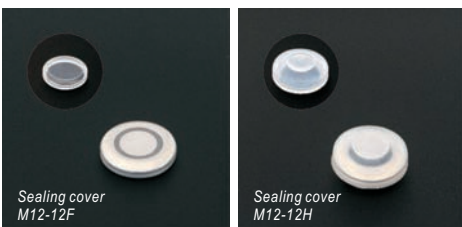
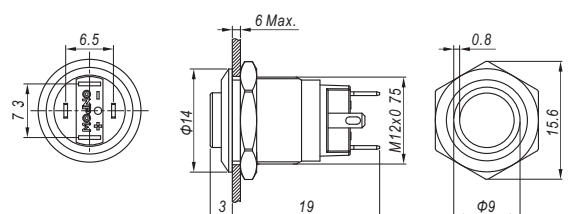
GQ12-AH-10D/JI ▲/▲/○

Contact Structure 1NO
Operation type Momentary
LED color △ R G Y B W
Voltage 6V/12V/24V
Housing Material C: Brass chrome plating / S: Stainless steel
Wiring type Wiring patch(2x0.5mm)
Protection class IP65(IP67 can be customized), IK07
Applicable accessories M12-12H



GQ12-AH-10E/JI ▲/▲/○

Contact Structure 1NO
Operation type Momentary
LED color △ R G Y B W
Voltage 6V/12V/24V
Housing Material C: Brass chrome plating / S: Stainless steel
Wiring type Wiring patch(2x0.5mm)
Protection class IP65(IP67 can be customized), IK07
Applicable accessories M12-12H



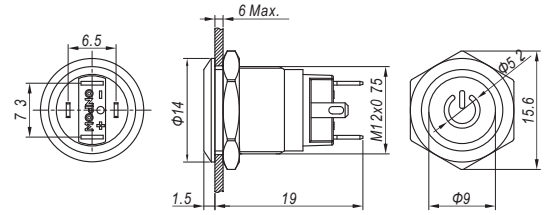
Sealing cover M12-12F

Sealing cover M12-12H



GQ12-AF-10DT/J/△/▲/S

Contact Structure	1NO
Operation type	Momentary
LED color △	R G Y B W
Voltage	6V/12V/24V
Housing Material	Stainless steel
Wiring type	Wiring patch(2x0.5mm)
Protection class	IP65(IP67 can be customized), IK07
Applicable accessories	M12-12F



Sealing cover
M12-12H