

GQ19

GQ19 series

- The installation hole diameter is $\Phi 19\text{mm}$;
- ☆ The switch is "self recovery | slow motion | single pole single throw";
- ☆ With rich product styles, compact size, economy and practicality, it has always been the preferred product for small panel users;
- ☆ The waterproof grade of the product is IP65.



GQ19 series model description

GQ19★- ◇/◆/△/▲/◎

Symbol	Symbol name	Specify
★	Head shape	B: spherical / F: Flat round
	Contact Structure	10: 1NO / No digital means indicator / Some products can be customized with 1NC
◇	Illuminated Type	D: ● Dot illuminated / E: ○ Ring illuminated / ET: ◎ Ring+power symbol illuminated / No letters mean no lights
◆	Wiring type	J: Wiring patch / No letters means terminals
	Color	R: Red / G: Green / Y: Yellow / B: Blue / W: White
	Voltage	6V / 12V / 24V / 110V / 220V All have built-in resistors, other voltage levels can be customized.
	Housing Material	N: Nickel plated Brass / S: Stainless steel / A: Aluminium alloy (Black)

Note: Please read the catalog carefully, and choose the right part-number according to the sign.

Performance Characteristic

Operating Temp	-25°C~+55°C (Non freezing) Keep the switch air circulating well
Operating Humidity	45~85% RH(Non condensing)
Contact Resistance	≤ 50mΩ
Insulation Resistance	≥ 100MΩ (500VDC)
Max. withstanding voltage	1500VAC, 50Hz, 1min
Vibration resistance	50Hz, The amplitude is about 1.2mm
Solder heat resistance	320°C 3s
Switch rating	2A/36VDC 1A/220V
Mechanical Life	1,000,000 cycles
Electrical Life	50,000 cycles
Base material	PBT
Nut torque	About 0.6Nm
Torque	About 4N
Operation Travel	About 1.8mm
Protection class	IP65,IK06

Standards and certification

Corresponding standard	Certification mark	Certification authority / certification number
GB/T 14048.5-2017		2020970305003361
EN61058-1:2018		UDEM M 2021 206 C62197

Switch structure description

Type	Diagram	Symbol
X		
Y		

Description: Double break point slow contact switch with two terminals

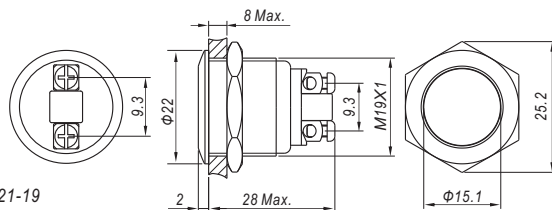
LED Specifications

LED life	Current	Allowable voltage fluctuation range	Circuit diagram
≥ 40000 hours	≤ 24V about 15mA ≥ 110V about 2mA	DC: ± 10% AC: ± 20%	<p>The product has built-in protective resistance, and the lamp bead wiring has no distinction between positive and negative poles.</p>

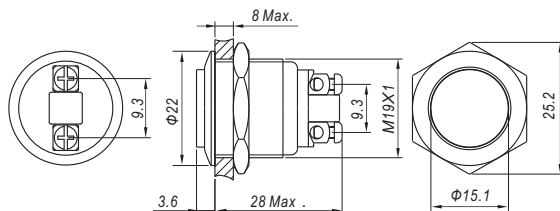
GQ19



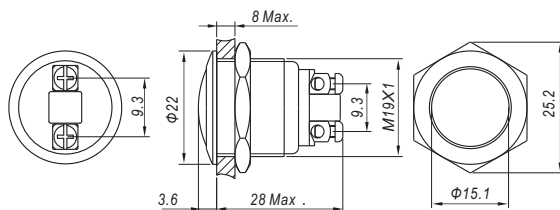
Contact Structure 1NO
Operation type Momentary
Housing Material N Nickel plated brass / S Stainless steel / A: Aluminium alloy (Black)
Wiring type Terminals
Protection class IP65, IK08
Applicable accessories Sealing cover M12-19F / protection cover T21-19



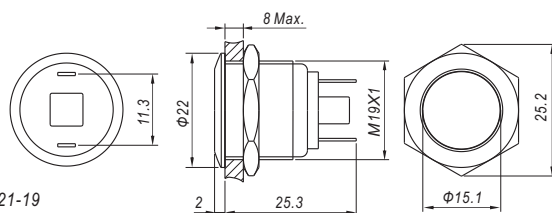
Contact Structure 1NO
Operation type Momentary
Housing Material N Nickel plated brass / S Stainless steel
Wiring type Terminals
Protection class IP65, IK08
Applicable accessories Sealing cover M12-19H



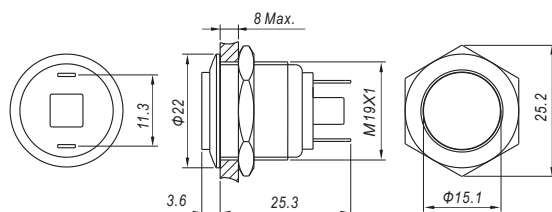
Contact Structure 1NO
Operation type Momentary
Housing Material N Nickel plated brass / S Stainless steel
Wiring type Terminals
Protection class IP65, IK08
Applicable accessories Sealing cover M12-19H



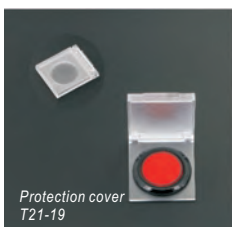
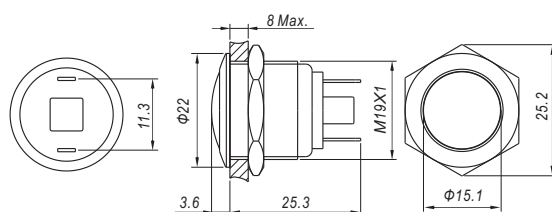
Contact Structure 1NO
Operation type Momentary
Housing Material N Nickel plated brass / S Stainless steel / A: Aluminium alloy (Black)
Wiring type Wiring patch(2×0.5mm)
Protection class IP65, IK08
Applicable accessories Sealing cover M12-19F / protection cover T21-19



Contact Structure 1NO
Operation type Momentary
Housing Material N Nickel plated brass / S Stainless steel
Wiring type Wiring patch(2×0.5mm)
Protection class IP65, IK08
Applicable accessories Sealing cover M12-19H



Contact Structure 1NO
Operation type Momentary
Housing Material N Nickel plated brass / S Stainless steel
Wiring type Wiring patch(2×0.5mm)
Protection class IP65, IK08
Applicable accessories Sealing cover M12-19H

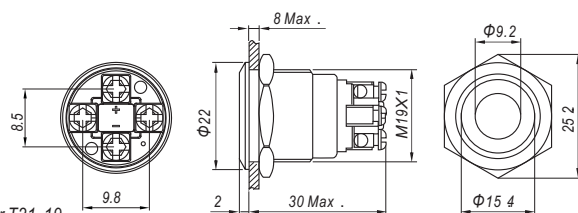


GQ19



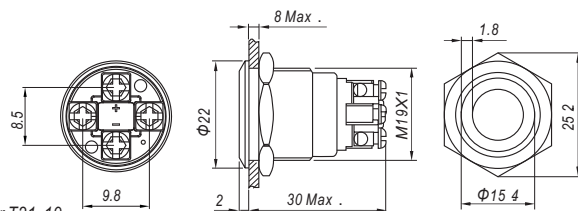
GQ19F-10D/Δ/▲/S

Contact Structure 1NO
Operation type Momentary
Color R G Y B W
Voltage ▲ 6V / 12V / 24V / 110V / 220V
Housing Material Stainless steel
Wiring type Terminals
Protection class IP65, IK08
Applicable accessories Sealing cover M12-19F / protection cover T21-19



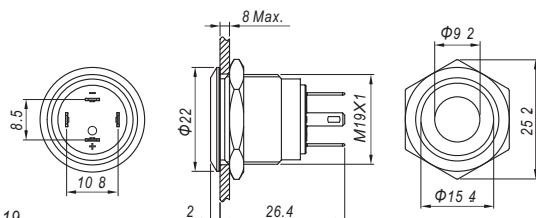
GQ19F-10E/Δ/▲/S

Contact Structure 1NO
Operation type Momentary
Color R G Y B W
Voltage ▲ 6V / 12V / 24V / 110V / 220V
Housing Material Stainless steel
Wiring type Terminals
Protection class IP65, IK08
Applicable accessories Sealing cover M12-19F / protection cover T21-19



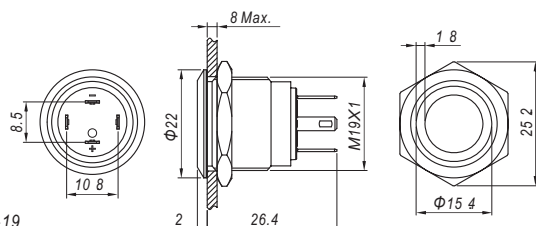
GQ19F-10D/J/Δ/▲/S

Contact Structure 1NO
Operation type Momentary
Color R G Y B W
Voltage ▲ 6V / 12V / 24V / 110V / 220V
Housing Material Stainless steel
Wiring type Wiring patch (2.8 x 0.5mm)
Protection class IP65, IK08
Applicable accessories Sealing cover M12-19F / protection cover T21-19

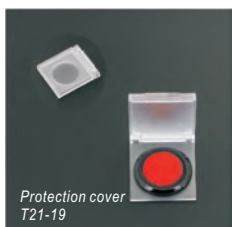


GQ19F-10E/J/Δ/▲/S

Contact Structure 1NO
Operation type Momentary
Color R G Y B W
Voltage ▲ 6V / 12V / 24V / 110V / 220V
Housing Material Stainless steel
Wiring type Wiring patch (2.8 x 0.5mm)
Protection class IP65, IK08
Applicable accessories Sealing cover M12-19F / protection cover T21-19



Sealing cover M12-19F



Protection cover T21-19



Panel plug M02