



Part-number Description

Code of series	Code name	The Front shape	Contact structure	Operation mode	Lamp type	Operation position of selector and key-lock type	Lamp color	Lamp voltage	Crust material
BGQ22	H	High Round	11 1NO1NC	Z Latching	D Dot	2 Two position	R Red	AC/DC 6V	S Stainless steel A Aluminium alloy(black)
BGQ25	PF	Super flat head + flat actuator	22 2NO2NC	Y Key-lock	E Ring	3 Three position	G Green	AC/DC 12V	
BGQ28			33 3NO3NC		C Ring+symbol illuminated		Y Yellow	AC/DC 24V	
AGQ30		No letter means flat round	See the detailed description which are available	No letter means momentary			O Orange	AC/DC 110V	
BGQ30							B Blue	AC/DC 220V	
							W White	Other voltage can be made to order	

Note: 1. Pls read the catalogue carefully, and choose the right part-number according to the sign.

2. LAS1-BGQ22 can be written GQ22 for short, LAS1-BGQ25 can be written GQ25, LAS1-BGQ28 can be written GQ28, LAS1-BGQ28 can be written GQ30, some 30mm product can not be written short. Please refer to the detailed description.

LAS1-AGQ Switch Rating

Rated Insulation Voltage Ui		250V				
Thermal Current Ith		5A				
Rated voltage		12V	24V	110V	220V	
Rated Operation Current	AC	Resistive load	—	—	1A	0.5A
	50/60Hz	Inductive load	—	—	0.7A	0.5A
		DC	Resistive load	1A	1A	0.2A
		Inductive load	0.7A	0.7A	0.1A	—
Contact material		Silver Alloy				

Minimum load: 3V AC/DC,5mA (Reference)
Application scope depends on operating environment and load type

LAS1-BGQ Switch Rating

Rated Insulation Voltage Ui		250V				
Thermal Current Ith		5A				
Rated voltage		12V	24V	110V	220V	
Rated Operation Current	AC	Resistive load	—	—	5A	3A
	50/60Hz	Inductive load	—	—	3A	2A
		DC	Resistive load	5A	5A	1A
		Inductive load	2A	2A	0.2A	0.1A
Contact material		Silver Alloy				

Minimum load: 3V AC/DC,5mA (Reference)
Application scope depends on operating environment and load type

Lamp Rating

Lamp type LED Lamp (AC/DC)

LED color R G Y O B W

Life span 40000 hours (Reference)

Rated Voltage AC/DC6V, AC/DC12V, AC/DC110V, AC/DC24V, AC/DC36V, AC/DC220V

Rated Voltage About 15mA; About 2mA

Dropping life Inner resistance

Lamp Circuit Diagram
Using AC/DC LED lamp, the terminals have no difference of anode and cathode: Using inner resistance, do not need outer resistance

Note: DC LED and other voltage can be made to order.

Specifications

Operating Temperature	-25°C ~ +55°C(no freezing)
	Maintain good ventilation round the switch
Operating Humidity	45~85%RH(no condensation)
Contact Resistance	≤50mΩ
Insulation Resistance	≥1000MΩ
Dielectric strength	2000V, AC50Hz, 5 seconds
Vibration Resistance	50Hz,amplitude 1.2mmP-P
Shock Resistance	≥10g
Solder Heat Resistance	320°C(no more than 2 seconds)

Declaration of conformity

corresponding standard	Certification	Certificate Authority/Certification Number
EN61058-1:2002+A2:2008	CE	VOV/VT11018806
EN60947-1:2004	CE	CTS/CTS070706-01006-E

Terminal Description

LAS1-AGQ

Two sets at most.
C1, NO1, NC1 and C2, NO2, NC2 are one set respectively. C is common used, NO is normal opened, NC is normal closed; +, - are lamp terminals, the standard LED have no difference of anode and cathode; Lamp and switch are relatively independent and can use switch or peripheral circuit to control the lamp state.

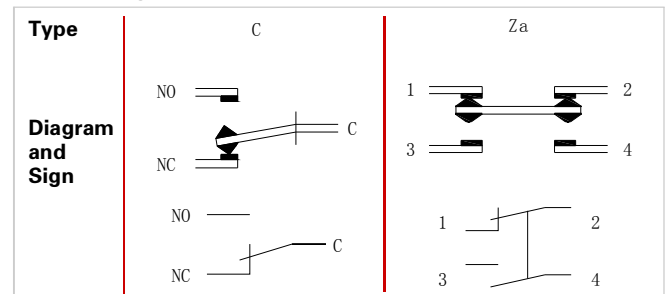
LAS1-BGQ (GQ22)

LAS1-BGQ (GQ25,28,30)

LAS1-BGQ30-33Y

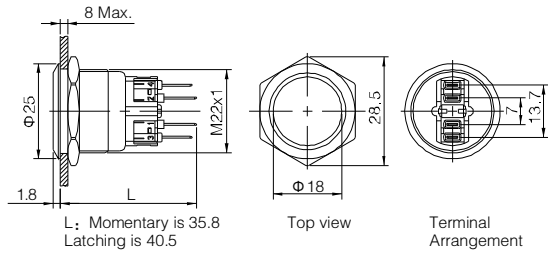
1,2,3,4 are one set; 1,2 are normal closed(NC);3,4 are normal opened(NO).
The standard LED terminals have no difference of anode and cathode.
The lamp and switch are relatively independent and can use switch or peripheral circuit to control the lamp state.

Switching Operation

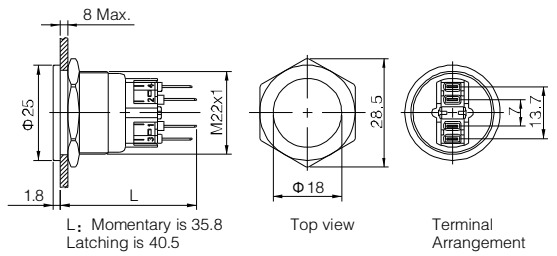




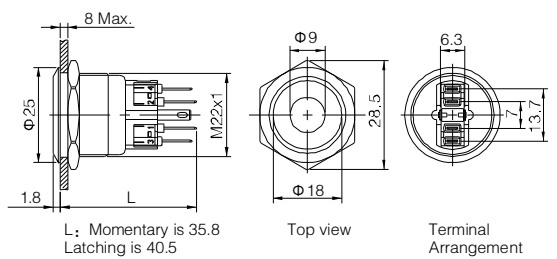
- ⊙ Φ22mm Diameter
- ⊙ Switch Rating: Ith:5A, Ui:250V
- ⊙ Contact Configuration: 1NO1NC
- ⊙ Operation Type (■): Momentary /Latching(Z)
- ⊙ The Crust Material (⊙): Stainless steel(S)Anodized(A)
- ⊙ IP Degree: IP65(IP67 made to order),IK10



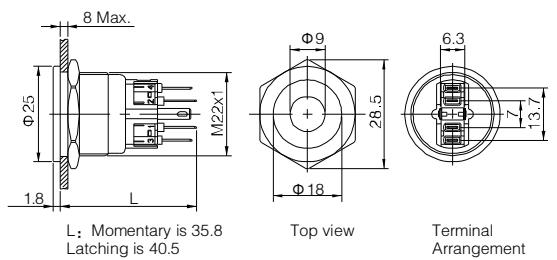
- ⊙ Φ22mm Diameter
- ⊙ Switch Rating: Ith:5A, Ui:250V
- ⊙ Contact Configuration: 1NO1NC
- ⊙ Operation Type (■): Momentary /Latching(Z)
- ⊙ The Crust Material (⊙): Stainless steel(S)
- ⊙ IP Degree: IP65(IP67 made to order),IK10



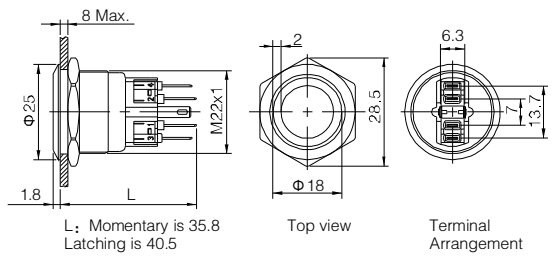
- ⊙ Φ22mm Diameter
- ⊙ Switch Rating: Ith:5A, Ui:250V
- ⊙ Contact Configuration: 1NO1NC
- ⊙ Operation Type (■): Momentary /Latching(Z)
- ⊙ LED color (Δ): **R G Y O B W**
- ⊙ LED voltage (▲): 6V/12V/24V/110V/220V
- ⊙ The Crust Material (⊙): Stainless steel(S)Anodized(A)
- ⊙ IP Degree: IP65(IP67 made to order),IK10



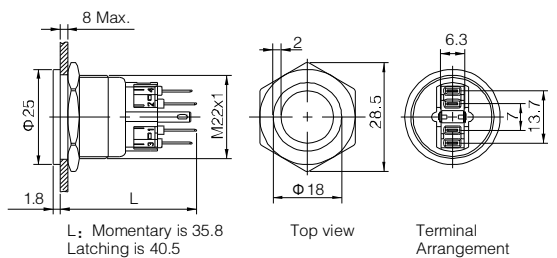
- ⊙ Φ22mm Diameter
- ⊙ Switch Rating: Ith:5A, Ui:250V
- ⊙ Contact Configuration: 1NO1NC
- ⊙ Operation Type (■): Momentary /Latching(Z)
- ⊙ LED color (Δ): **R G Y O B W**
- ⊙ LED voltage (▲): 6V/12V/24V/110V/220V
- ⊙ The Crust Material (⊙): Stainless steel(S)
- ⊙ IP Degree: IP65(IP67 made to order),IK10



- ⊙ Φ22mm Diameter
- ⊙ Switch Rating: Ith:5A, Ui:250V
- ⊙ Contact Configuration: 1NO1NC
- ⊙ Operation Type (■): Momentary /Latching(Z)
- ⊙ LED color (Δ): **R G Y O B W**
- ⊙ LED voltage (▲): 6V/12V/24V/110V/220V
- ⊙ The Crust Material (⊙): Stainless steel(S)Anodized(A)
- ⊙ IP Degree: IP65(IP67 made to order),IK10

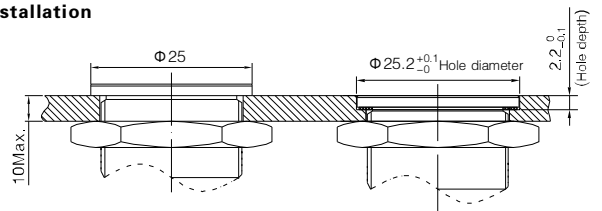


- ⊙ Φ22mm Diameter
- ⊙ Switch Rating: Ith:5A, Ui:250V
- ⊙ Contact Configuration: 1NO1NC
- ⊙ Operation Type (■): Momentary /Latching(Z)
- ⊙ LED color (Δ): **R G Y O B W**
- ⊙ LED voltage (▲): 6V/12V/24V/110V/220V
- ⊙ The Crust Material (⊙): Stainless steel(S)
- ⊙ IP Degree: IP65(IP67 made to order),IK10



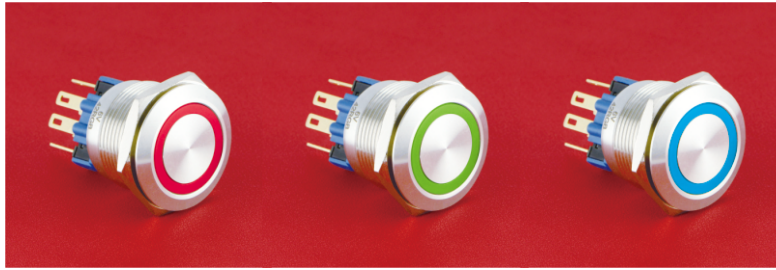
GQ22-11■/⊙		GQ22PF-11■/⊙	
GQ22-11■D/Δ/▲/⊙		GQ22PF-11■D/Δ/▲/⊙	
GQ22-11■E/Δ/▲/⊙		GQ22PF-11■E/Δ/▲/⊙	
Switching	Za(double-break fast-motion changeover contact)	Material	Button Stainless steel/Anodized
Panel Thickness	1 ~ 8mm		Body Stainless steel/Anodized
Mechanical Life	1,000,000 cycles		Base PA
Electrical Life	50,000 cycles	Operation Pressure	About 4N
Terminal Type	Pin Terminal(2.8×0.5mm)	Operation Travel	About 2.8mm
Torque	1.0Nm	RoHS	Made to order

GQ22Flush Flat Anti-vandal pushbutton Installation



GQ22 TRI-COLOR LED PUSH BUTTON SWITCH

Flat actuator+pin terminal+tri-color ring LED



GQ22-11■E/★RGB/▲/◎
(Dual color with 3 wires is available)

Tri-color Display

- Operating Type■ :
Momentary / Latching(Z)
- LED Options★:
41 Tri-color (Common Cathode)
42 Tri-color (Common Anode)
- LED Voltage▲ :
AC/DC 6V
AC/DC 12V
AC/DC 24V
- Body◎ :
S stainless steel
A Aluminum(Black)

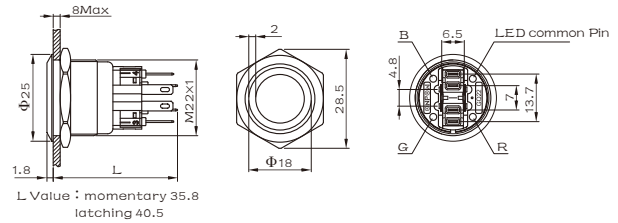
Specifications

- Panel Cutout: $\Phi 22\text{mm}$
- Contact Configuration: 1NO1NC
- Head Shape: Flat
- Terminal: Pin(2.8x0.5mm)
- Switching: Za(Double-break fast-motion contact)
- Contact Resistance: $\leq 50\text{m}\Omega$
- Insulation Resistance: $\geq 1000\text{M}\Omega$
- Electrical strength: 1500VAC, 50Hz, 1min
- Operating Temperature: $-25^{\circ}\text{C} \sim +55^{\circ}\text{C}$ (No freeze)
- Mechanical Life: 1,000,000 cycles
- Electrical Life: 50,000 cycles
- Panel Thickness: 1 ~ 8mm
- Torque: About 0.6Nm
- Actuation Force: About 4N
- Actuation Travel: About 2.5mm
- Protection Class: IP65,IK10
- Contact: Silvery Alloy
- Actuator:Stainless steel/ Aluminum(Black)
- Body: Stainless steel/Aluminum(Black)
- Base: PBT

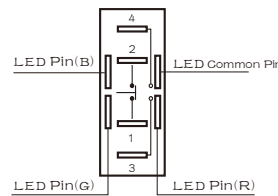
made to order.

RoHS

Dimension



Terminal Arrangement



- 1,2,3,4 are one set;
- 1,2 are normal closed(NC);
- 3,4 are normal opened(NO).
- The lamp and switch are relatively independent and can use switch or peripheral circuit to control the lamp state.

Switch Rating

Rated Insulation Voltage Ui		250V				
Thermal Current Ith		5A 温度不超过最大额定值所允许的电流				
Rated Voltage		12V	24V	110V	220V	
Rated Operation Current	AC 50/60Hz	Resistive load	—	—	5A 3A	
		Inductive load	—	—	3A 2A	
	DC	Resistive load	5A	5A	1A	0.5A
		Inductive load	2A	2A	0.2A	0.1A
Contact material		Silver Alloy				

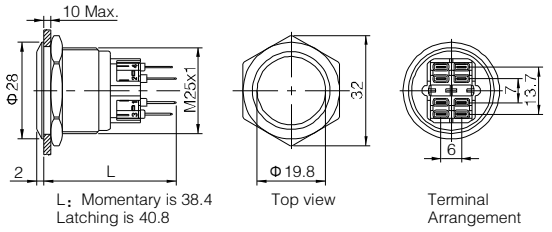
Minimum load: 3VAC/DC,5mA(Reference)
Application scope depends on operating environment and load type

Tri-color Lamp Specification

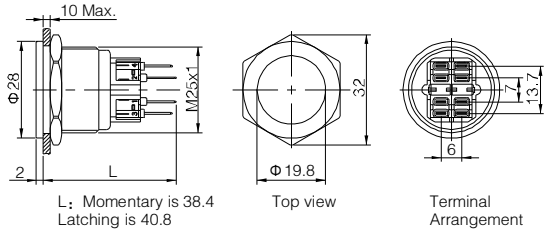
Lamp Type	Tri-color Lamp Specification
LED Color	R G B
Life	4000hours(Reference)
Rated Voltage	Without Resistor R 1.8V, G 2.8V, B 2.8V
	With internal resistor: DC6V, DC12V, DC24V
Rated Current	5~15mA
Lamp Circuit Diagram	<p>Common Cathode Common Anode</p>
Using unidirection LED lamp,need distinguish anode and cathode,Using inner resistor,do not need connect outer resistor.	



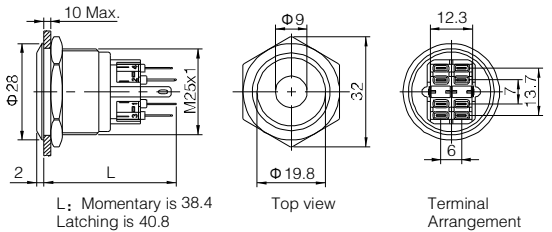
- ⊙ Φ25mm Diameter
- ⊙ Switch Rating: Ith:5A, Ui:250V
- ⊙ Contact Configuration(□): 1NO1NC(11)/2NO2NC(22)
- ⊙ Operation Type(■): Momentary / Latching(Z)
- ⊙ Crust Material(⊙): Stainless steel(S)/Anodized(A)
- ⊙ IP Degree: IP65(IP67made to order) ,IK10



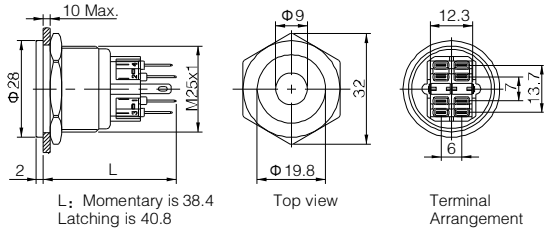
- ⊙ Φ25mm Diameter
- ⊙ Switch Rating: Ith:5A, Ui:250V
- ⊙ Contact Configuration(□): 1NO1NC(11)/2NO2NC(22)
- ⊙ Operation Type(■): Momentary / Latching(Z)
- ⊙ Crust Material(⊙): Stainless steel(S)
- ⊙ IP Degree: IP65(IP67made to order) ,IK10



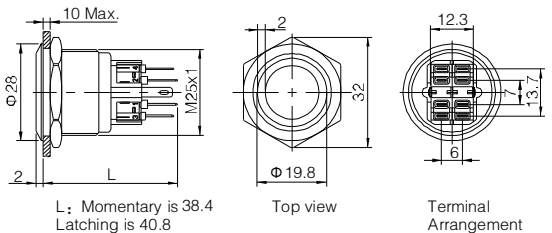
- ⊙ Φ25mm Diameter
- ⊙ Switch Rating: Ith:5A, Ui:250V
- ⊙ Contact Configuration(□): 1NO1NC(11)/2NO2NC(22)
- ⊙ Operation Type(■): Momentary / Latching(Z)
- ⊙ LED Color(Δ): **R G Y O B W**
- ⊙ LED Voltage(▲): 6V/12V/24V/110V/220V
- ⊙ Crust Material(⊙): Stainless steel(S)/Anodized(A)
- ⊙ IP Degree: IP65(IP67made to order) ,IK10



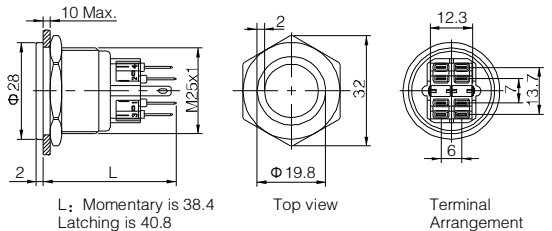
- ⊙ Φ25mm Diameter
- ⊙ Switch Rating: Ith:5A, Ui:250V
- ⊙ Contact Configuration(□): 1NO1NC(11)/2NO2NC(22)
- ⊙ Operation Type(■): Momentary / Latching(Z)
- ⊙ LED Color(Δ): **R G Y O B W**
- ⊙ LED Voltage(▲): 6V/12V/24V/110V/220V
- ⊙ Crust Material(⊙): Stainless steel(S)
- ⊙ IP Degree: IP65(IP67made to order) ,IK10



- ⊙ Φ25mm Diameter
- ⊙ Switch Rating: Ith:5A, Ui:250V
- ⊙ Contact Configuration(□): 1NO1NC(11)/2NO2NC(22)
- ⊙ Operation Type(■): Momentary / Latching(Z)
- ⊙ LED Color(Δ): **R G Y O B W**
- ⊙ LED Voltage(▲): 6V/12V/24V/110V/220V
- ⊙ Crust Material(⊙): Stainless steel(S)/Anodized(A)
- ⊙ IP Degree: IP65(IP67made to order) ,IK10

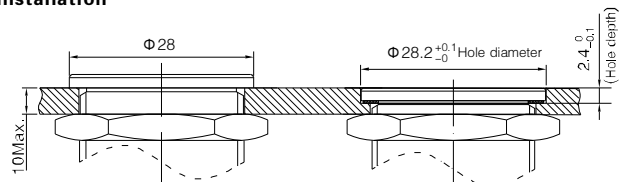


- ⊙ Φ25mm Diameter
- ⊙ Switch Rating: Ith:5A, Ui:250V
- ⊙ Contact Configuration(□): 1NO1NC(11)/2NO2NC(22)
- ⊙ Operation Type(■): Momentary / Latching(Z)
- ⊙ LED Color(Δ): **R G Y O B W**
- ⊙ LED Voltage(▲): 6V/12V/24V/110V/220V
- ⊙ Crust Material(⊙): Stainless steel(S)
- ⊙ IP Degree: IP65(IP67made to order) ,IK10



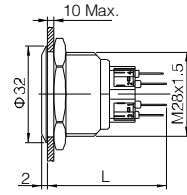
GQ25-□■/○		GQ25PF-□■/○		
GQ25-□■D/Δ/▲/○		GQ25PF-□■D/Δ/▲/○		
GQ25-□■E/Δ/▲/○		GQ25PF-□■E/Δ/▲/○		
Switching	Za(double-break fast-motion changeover contact)	Material	Button	Stainless steel/ Anodized
Panel Thickness	1 ~ 8mm		Body	Stainless steel/ Anodized
Mechanical Life	1,000,000 cycles		Base	PA
Electrical Life	50,000 cycles	Operation Pressure	5.5-7N	
Terminal Type	Pin Terminal(2.8 × 0.5mm)	Operation Travel		
Torque	1.2Nm	RoHS	Made to order	

GQ25 Flush Flat Anti-vandal pushbutton Installation

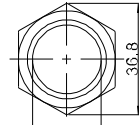




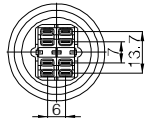
- ⊙ Φ28mm Diameter
- ⊙ Switch Rating: Ith:5A, Ui:250V
- ⊙ Contact Configuration(□): 1NO1NC(11)/2NO2NC(22)
- ⊙ Operation Type(■): Momentary / Latching(Z)
- ⊙ Crust Material(⊙): Stainless steel(S)
- ⊙ IP Degree: IP65(IP67made to order) ,IK10



L: Momentary is 39.4
Latching is 41.8



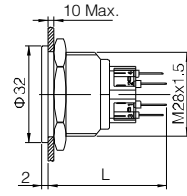
Top view



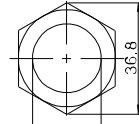
Terminal Arrangement



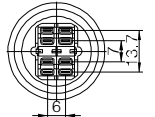
- ⊙ Φ28mm Diameter
- ⊙ Switch Rating: Ith:5A, Ui:250V
- ⊙ Contact Configuration(□): 1NO1NC(11)/2NO2NC(22)
- ⊙ Operation Type(■): Momentary / Latching(Z)
- ⊙ Crust Material(⊙): Stainless steel(S)
- ⊙ IP Degree: IP65(IP67made to order) ,IK10



L: Momentary is 39.4
Latching is 41.8



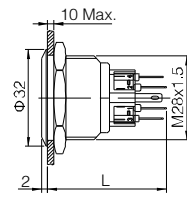
Top view



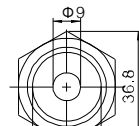
Terminal Arrangement



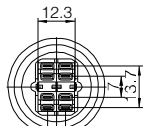
- ⊙ Φ28mm Diameter
- ⊙ Switch Rating: Ith:5A, Ui:250V
- ⊙ Contact Configuration(□): 1NO1NC(11)/2NO2NC(22)
- ⊙ Operation Type(■): Momentary / Latching(Z)
- ⊙ LED Color(△): R G Y O B W
- ⊙ LED Voltage(▲): 6V/12V/24V/110V/220V
- ⊙ Crust Material(⊙): Stainless steel(S)
- ⊙ IP Degree: IP65(IP67made to order) ,IK10



L: Momentary is 39.4
Latching is 41.8



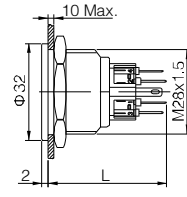
Top view



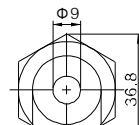
Terminal Arrangement



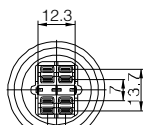
- ⊙ Φ28mm Diameter
- ⊙ Switch Rating: Ith:5A, Ui:250V
- ⊙ Contact Configuration(□): 1NO1NC(11)/2NO2NC(22)
- ⊙ Operation Type(■): Momentary / Latching(Z)
- ⊙ LED Color(△): R G Y O B W
- ⊙ LED Voltage(▲): 6V/12V/24V/110V/220V
- ⊙ Crust Material(⊙): Stainless steel(S)
- ⊙ IP Degree: IP65(IP67made to order) ,IK10



L: Momentary is 39.4
Latching is 41.8



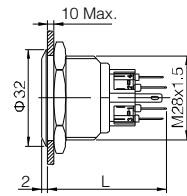
Top view



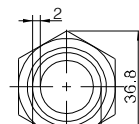
Terminal Arrangement



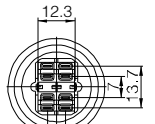
- ⊙ Φ28mm Diameter
- ⊙ Switch Rating: Ith:5A, Ui:250V
- ⊙ Contact Configuration(□): 1NO1NC(11)/2NO2NC(22)
- ⊙ Operation Type(■): Momentary / Latching(Z)
- ⊙ LED Color(△): R G Y O B W
- ⊙ LED Voltage(▲): 6V/12V/24V/110V/220V
- ⊙ Crust Material(⊙): Stainless steel(S)
- ⊙ IP Degree: IP65(IP67made to order) ,IK10



L: Momentary is 38.4
Latching is 40.8



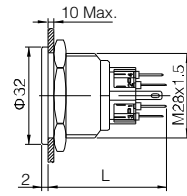
Top view



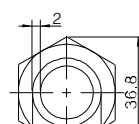
Terminal Arrangement



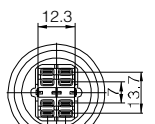
- ⊙ Φ28mm Diameter
- ⊙ Switch Rating: Ith:5A, Ui:250V
- ⊙ Contact Configuration(□): 1NO1NC(11)/2NO2NC(22)
- ⊙ Operation Type(■): Momentary / Latching(Z)
- ⊙ LED Color(△): R G Y O B W
- ⊙ LED Voltage(▲): 6V/12V/24V/110V/220V
- ⊙ Crust Material(⊙): Stainless steel(S)
- ⊙ IP Degree: IP65(IP67made to order) ,IK10



L: Momentary is 38.4
Latching is 40.8



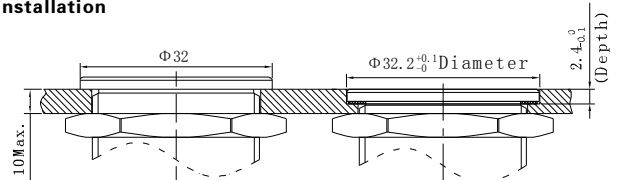
Top view



Terminal Arrangement

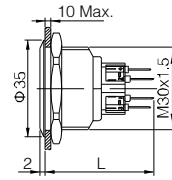
GQ28-□■/○		GQ28PF-□■/○		
GQ28-□■D/△/▲/○		GQ28PF-□■D/△/▲/○		
GQ28-□■E/△/▲/○		GQ28PF-□■E/△/▲/○		
Switching	Za(double-break fast-motion changeover contact)	Material	Button	Stainless steel
Panel Thickness	1 ~ 8mm		Body	Stainless steel
Mechanical Life	1,000,000 cycles		Base	PA
Electrical Life	50,000 cycles		Operation Pressure	5.5-7N
Terminal Type	Pin Terminal(2.8 × 0.5mm)	Operation Travel	About 2.8mm	
Torque	1.4Nm		RoHS	Made to order

GQ28 Flush Flat Anti-vandal Pushbutton Installation

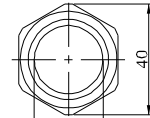




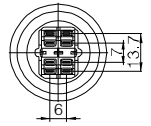
- ⊙ Φ30mm Diameter
- ⊙ Switch Rating: Ith:5A, Ui:250V
- ⊙ Contact Configuration(□): 1NO1NC(11)/2NO2NC(22)
- ⊙ Operation Type(■): Momentary / Latching(Z)
- ⊙ Crust Material(⊙): Stainless steel(S)
- ⊙ IP Degree: IP65(IP67made to order) ,IK10



L: Momentary is 39.4
Latching is 41.8



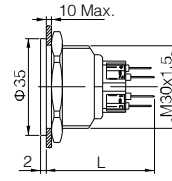
Top View



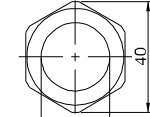
Terminal Arrangement



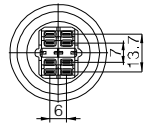
- ⊙ Φ30mm Diameter
- ⊙ Switch Rating: Ith:5A, Ui:250V
- ⊙ Contact Configuration(□): 1NO1NC(11)/2NO2NC(22)
- ⊙ Operation Type(■): Momentary / Latching(Z)
- ⊙ Crust Material(⊙): Stainless steel(S)
- ⊙ IP Degree: IP65(IP67made to order) ,IK10



L: Momentary is 39.4
Latching is 41.8



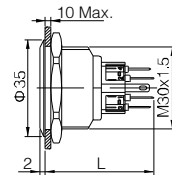
Top View



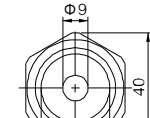
Terminal Arrangement



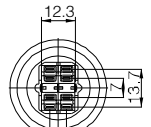
- ⊙ Φ30mm Diameter
- ⊙ Switch Rating: Ith:5A, Ui:250V
- ⊙ Contact Configuration(□): 1NO1NC(11)/2NO2NC(22)
- ⊙ Operation Type(■): Momentary / Latching(Z)
- ⊙ LED Color(△): R G Y O B W
- ⊙ LED Voltage(▲): 6V/12V/24V/110V/220V
- ⊙ Crust Material(⊙): Stainless steel(S)
- ⊙ IP Degree: IP65(IP67made to order) ,IK10



L: Momentary is 39.4
Latching is 41.8



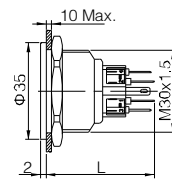
Top View



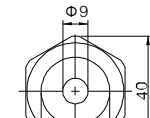
Terminal Arrangement



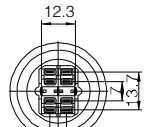
- ⊙ Φ30mm Diameter
- ⊙ Switch Rating: Ith:5A, Ui:250V
- ⊙ Contact Configuration(□): 1NO1NC(11)/2NO2NC(22)
- ⊙ Operation Type(■): Momentary / Latching(Z)
- ⊙ LED Color(△): R G Y O B W
- ⊙ LED Voltage(▲): 6V/12V/24V/110V/220V
- ⊙ Crust Material(⊙): Stainless steel(S)
- ⊙ IP Degree: IP65(IP67made to order) ,IK10



L: Momentary is 39.4
Latching is 41.8



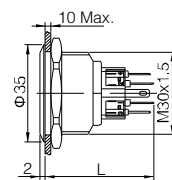
Top View



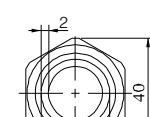
Terminal Arrangement



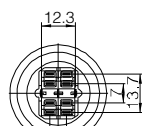
- ⊙ Φ30mm Diameter
- ⊙ Switch Rating: Ith:5A, Ui:250V
- ⊙ Contact Configuration(□): 1NO1NC(11)/2NO2NC(22)
- ⊙ Operation Type(■): Momentary / Latching(Z)
- ⊙ LED Color(△): R G Y O B W
- ⊙ LED Voltage(▲): 6V/12V/24V/110V/220V
- ⊙ Crust Material(⊙): Stainless steel(S)
- ⊙ IP Degree: IP65(IP67made to order) ,IK10



L: Momentary is 38.4
Latching is 40.8



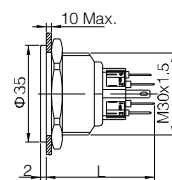
Top View



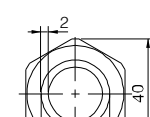
Terminal Arrangement



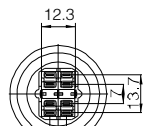
- ⊙ Φ30mm Diameter
- ⊙ Switch Rating: Ith:5A, Ui:250V
- ⊙ Contact Configuration(□): 1NO1NC(11)/2NO2NC(22)
- ⊙ Operation Type(■): Momentary / Latching(Z)
- ⊙ LED Color(△): R G Y O B W
- ⊙ LED Voltage(▲): 6V/12V/24V/110V/220V
- ⊙ Crust Material(⊙): Stainless steel(S)
- ⊙ IP Degree: IP65(IP67made to order) ,IK10



L: Momentary is 38.4
Latching is 40.8



Top View



Terminal Arrangement

GQ30F-□■/○		GQ30PF-□■/○		
GQ30F-□■D/△/▲/○		GQ30PF-□■D/△/▲/○		
GQ30F-□■E/△/▲/○		GQ30PF-□■E/△/▲/○		
Switching	Za(double-break fast-motion changeover contact)	Material	Button	Stainless steel
Panel Thickness	1 ~ 8mm		Body	Stainless steel
Mechanical Life	1,000,000 cycles		Base	PA
Electrical Life	50,000 cycles		Operation Pressure	5.5-7N
Terminal Type	Pin Terminal(2.8 × 0.5mm)		Operation Travel	About 2.8mm
Torque	1.6Nm	RoHS		Made to order

Gq30 Flush Flat Anti-vandal Pushbutton Installation

