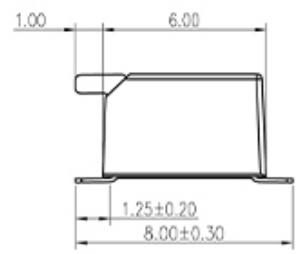
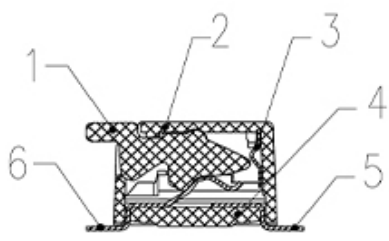
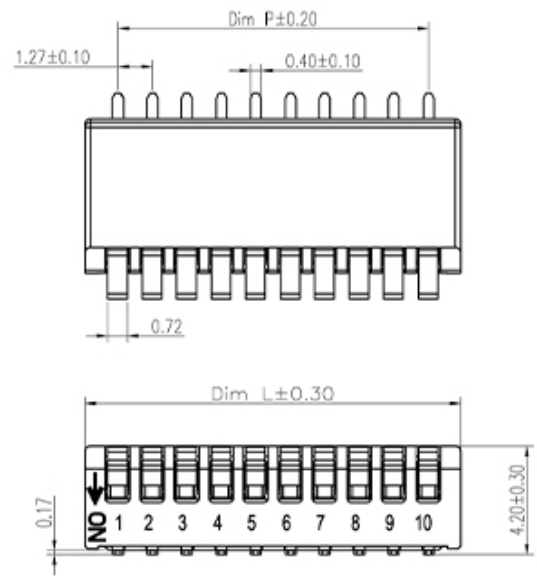
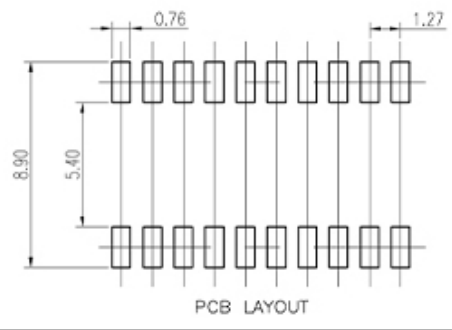


REV	ECN	CONTENT	CHECK	DATE
VO.0		ORIGINAL	ZY	2019.10.11
V1.0		整理图纸	XCN	2020.06.05



SPECIFICATION:

- Rating:
 - Switching: 25mA, 24VDC
 - Non-Switching: 100mA, 50VDC
- Contact Resistance:
 - Initial: 100mΩ max
 - After Life Test: 200mΩ max
- Insulation Resistance: 100MΩ min/100 VDC
- Withstand Voltage: 300VAC for 1 minute
- Operation Force: 800g max
- Mechanical Life: min 2000 cycles
- Operation Temperature: -40℃~+85℃
- Storage Temperature: -40℃~+85℃
- RoHS Compliance

SOLDERING INFORMATION:

Reflow Soldering: 240℃ (20S max), Peak Temperature 260℃,
 Manual Soldering: 30W iron, 320±5℃, 3S max
 Keep in "off" position during soldering

ITEM	NAME OF PART	NO. OF PART	Q'TY	MATERIAL	NOTE
6	PIN 2	\	N	COPPY ALLOY	Au plated
5	PIN 1	\	N	COPPY ALLOY	Au plated
4	HOUSING 2	\	1	THERMOPLASTIC	UL94V-0
3	Spring	\	1	STEEL	\
2	HOUSING 1	\	1	THERMOPLASTIC	UL94V-0
1	ACTUATOR	\	N	THERMOPLASTIC	UL94V-0

HOW TO ORDER
KF1038 B - - XXP - XX - XXXXX

Series No. B: SMD Type No. of Pole 00: tube (without Tape) TR: tape & reel (with Tape) Customer Reques

SCHEMATIC(TYP.)

 (2,4,6,8,10 Poles Avail)

General tolerance in mm						radii and chamfers			shorter angle side			= //			
over 0.5 to 3	over 3 to 6	over 6 to 30	over 30 to 120	over 120 to 400	over 400 to 1000	over 0.5 to 3	over 3 to 6	over 6 to 10	up to 10	over 10 to 50	over 50 to 120	all	over 0 to 100	over 100 to 150	over 150
±0.15	±0.2	±0.25	±0.3	±0.5	±0.8	±0.2	±0.5	±1.0	±1°	±30'	±20'	0.5	0.2	0.3	0.5

Poles	Dim P	Dim L
2P	1.27	3.68
4P	3.81	6.22
6P	6.35	8.76
8P	8.89	11.30
10P	11.43	13.84

APP.	DATE	NAME	KF1038B-XXP-XX-XXXX		
CHK.	DATE				
DWG.	DATE	DWGND.	W20000082		
UNITS	MM	SCALE	1:1	SHEET	1/1
		PROJECTION-METHOD	◎		

DF 慈溪市凯峰电子有限公司
 CIXI KAIFENG ELECTRONICS CO., LTD