

# LAS2GQ

## LAS2GQ Series

- ☆ The installation aperture is  $\Phi 16\text{mm}$ ;
- ☆ The switch is "Snap Action | SPDT / DPDT";
- ☆ This series is as rich in configuration options as GQ16 (refer to the details page for details), and in switch combination, LAS2GQ is 1NO1NC / 2NO2NC (GQ16 is 1NO), and a self-locking structure is added for users to choose;
- ☆ Product waterproof grade IP40 / IP67.

### Performance Characteristic

Operating Temp	-25°C~+55°C (Non freezing) Keep the switch air circulating well
Operating Humidity	45~85% RH(Non condensing)
Contact Resistance	$\leq 50\text{m}\Omega$
Insulation Resistance	$\geq 100\text{M}\Omega$ (500VDC)
Max. withstanding voltage	1500VAC, 50Hz, 1min
Vibration resistance	50Hz, The amplitude is about 1.2mm
Solder heat resistance	320°C 3s
Switch rating	0.5A/220V
Mechanical Life	200,000 cycles
Electrical Life	50,000 cycles
Base material	PA
Nut torque	About 0.6Nm
Torque	Self-recovery: about 1.2~1.8N, self-locking: about 2.3~2.8N (1NO1NC) Self-recovery: about 1.4~2N, self-locking: about 2.5~3N (2NO2NC)
Operation Travel	About 2.8mm
Protection class	IP40(IP67 can be customized), IK09

### LED Specifications

LED life	Current	Allowable voltage fluctuation range	Circuit diagram
$\geq 40000$ hours	$\leq 24\text{V}$ about 15mA $\geq 110\text{V}$ about 2mA	DC: $\pm 10\%$	<p>The product has built-in protective resistance, and the lamp bead wiring has no distinction between positive and negative poles.</p>

### Switch Rating

Rated Insulation Voltage $U_i$		250V				
Thermal Current $I_{th}$		3A				
Rated voltage		12V	24V	110V	220V	
Rated Operation Current	AC 50/60Hz	Resistive load	-	-	1A	0.5A
		Inductive load	-	-	0.7A	0.5A
	DC	Resistive load	1A	1A	0.2A	-
		Inductive load	0.7A	0.7A	0.1A	-
Contact material		Silver Alloy				

Minimum load: 3VAC/DC, 5mA (Reference)

Application scope depends on operating environment and load type.

### Standards and certification

Corresponding standard	Certification mark	Certification authority / certification number
GB/T 14048.5-2017		2020970305003362
EN61058-1:2018		UDEM/M.2021.206.C62197

### Switch structure description

Type	Diagram	Symbol
C		

### Pin Description

Up to two sets of switches can be configured. C1, NO1, NC1 and C2, NO2, NC2 are a group of switches respectively; C pin is a common pin, NO pin is a normally open pin, and NC pin is a normally closed pin; + and - pins are lamp bead pins, conventional lamp beads There is no distinction between positive and negative poles in the configuration; the lamp bead is relatively independent from the switch, and the state of the lamp bead can be controlled through the switch or peripheral circuit.

# LAS2GQ

## LAS2GQ series model description

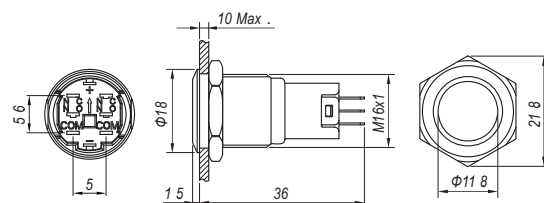
LAS2GQ★-□■◇/△/▲/◎/☆

Symbol	Symbol name	Specify
★	Head shape	F: Flat round / H: High round / C: concave round / G: high concave round
□	Contact Structure	11: 1NO1NC / 22: 2NO2NC / No digital means indicator
■	Operation type	Z: Latching / No letter means momentary
◇	Illuminated Type	D: ● Dot illuminated / E: ○ Ring illuminated / DT: ◎ Single Power Symbol / ET: ◎ Ring+power symbol illuminated / No letters mean no lights
	Color	R: Red / G: Green / Y: Yellow / B: Blue / W: White
	Voltage	6V / 12V / 24V / 110V / 220V other voltage levels can be customized.
	Housing Material	N: Nickel plated Brass / S: Stainless steel / A: Aluminium alloy (Black)
☆	Protection class	FP:IP67 / No letter represents IP40

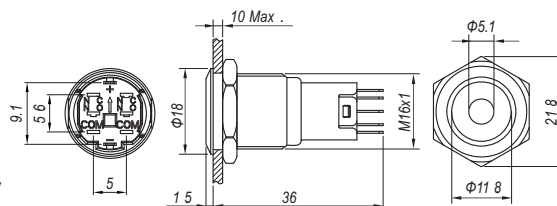
Note: Please read the catalog carefully, and choose the right part-number according to the sign.



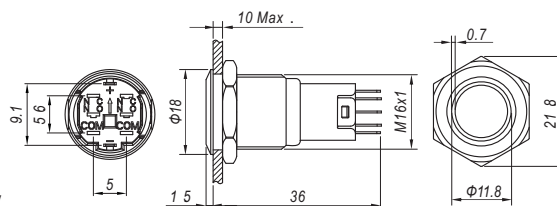
Contact Structure □ 11: 1NO1NC / 22: 2NO2NC  
 Operation type ■ Z: Latching / No letter means momentary  
 Housing Material ◎ N: Nickel plated Brass / S: Stainless steel / A: Aluminium alloy (Black)  
 Protection class ☆ FP:IP67 / No letter represents IP40  
 Applicable accessories Safety mask M12-16F / Solder socket M20 / PCB socket M20-A



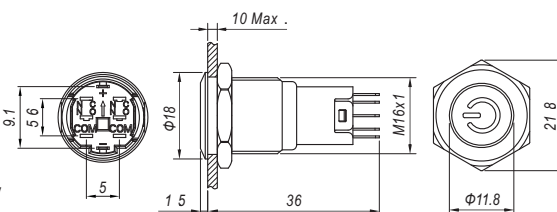
Contact Structure □ 11: 1NO1NC / 22: 2NO2NC  
 Operation type ■ Z: Latching / No letter means momentary  
 Color R G Y B W  
 Voltage ▲ 6V / 12V / 24V / 110V / 220V  
 Housing Material N: Nickel plated Brass / S: Stainless steel  
 Protection class ☆ FP:IP67 / No letter represents IP40  
 Applicable accessories Safety mask M12-16F / Solder socket M20 / PCB socket M20-A



Contact Structure □ 11: 1NO1NC / 22: 2NO2NC  
 Operation type ■ Z: Latching / No letter means momentary  
 Color R G Y B W  
 Voltage ▲ 6V / 12V / 24V / 110V / 220V  
 Housing Material N: Nickel plated Brass / S: Stainless steel / A: Aluminium alloy (Black)  
 Protection class ☆ FP:IP67 / No letter represents IP40  
 Applicable accessories Safety mask M12-16F / Solder socket M20 / PCB socket M20-A



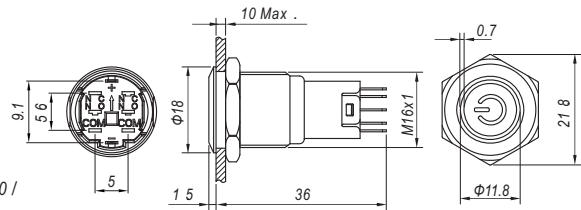
Contact Structure □ 11: 1NO1NC / 22: 2NO2NC  
 Operation type ■ Z: Latching / No letter means momentary  
 Color R G Y B W  
 Voltage ▲ 6V / 12V / 24V / 110V / 220V  
 Housing Material N: Nickel plated Brass / S: Stainless steel  
 Protection class ☆ FP:IP67 / No letter represents IP40  
 Applicable accessories Safety mask M12-16F / Solder socket M20 / PCB socket M20-A



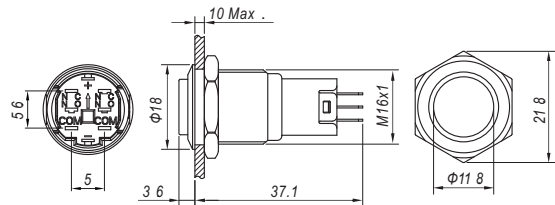
# LAS2GQ



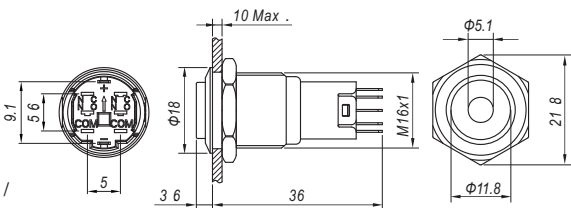
Contact Structure □ 11: 1NO1NC / 22: 2NO2NC  
 Operation type ■ Z: Latching / No letter means momentary  
 Color **R G Y B W**  
 Voltage ▲ 6V / 12V / 24V / 110V / 220V  
 Housing Material N: Nickel plated Brass / S: Stainless steel  
 Protection class ☆ FP:IP67 / No letter represents IP40  
 Applicable accessories Safety mask M12-16F / Solder socket M20 / PCB socket M20-A



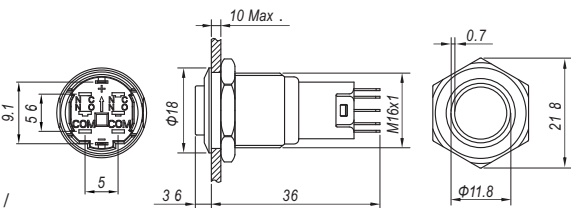
Contact Structure □ 11: 1NO1NC / 22: 2NO2NC  
 Operation type ■ Z: Latching / No letter means momentary  
 Housing Material ○ N: Nickel plated Brass / S: Stainless steel / A: Aluminium alloy (Black)  
 Protection class ☆ FP:IP67 / No letter represents IP40  
 Applicable accessories Safety mask M12-16H / Solder socket M20 / PCB socket M20-A



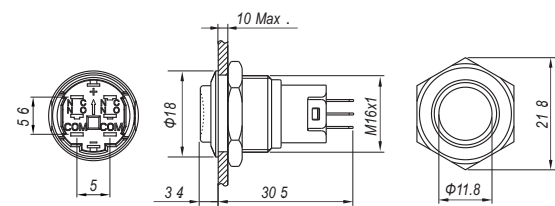
Contact Structure □ 11: 1NO1NC / 22: 2NO2NC  
 Operation type ■ Z: Latching / No letter means momentary  
 Color **R G Y B W**  
 Voltage ▲ 6V / 12V / 24V / 110V / 220V  
 Housing Material N: Nickel plated Brass / S: Stainless steel  
 Protection class ☆ FP:IP67 / No letter represents IP40  
 Applicable accessories Safety mask M12-16H / Solder socket M20 / PCB socket M20-A



Contact Structure □ 11: 1NO1NC / 22: 2NO2NC  
 Operation type ■ Z: Latching / No letter means momentary  
 Color **R G Y B W**  
 Voltage ▲ 6V / 12V / 24V / 110V / 220V  
 Housing Material N: Nickel plated Brass / S: Stainless steel / A: Aluminium alloy (Black)  
 Protection class ☆ FP:IP67 / No letter represents IP40  
 Applicable accessories Safety mask M12-16H / Solder socket M20 / PCB socket M20-A



Contact Structure □ 11: 1NO1NC / 22: 2NO2NC  
 Operation type ■ Z: Latching / No letter means momentary  
 Color **R G Y B W**  
 Housing Material Stainless steel  
 Protection class ☆ FP:IP67 / No letter represents IP40  
 Applicable accessories Safety mask M12-16H / Solder socket M20 / PCB socket M20-A



Contact Structure □ 11: 1NO1NC / 22: 2NO2NC  
 Operation type ■ Z: Latching / No letter means momentary  
 Housing Material Stainless steel  
 Protection class ☆ FP:IP67 / No letter represents IP40  
 Applicable accessories Solder socket M20 / PCB socket M20-A

