

LAS2GQ

Metal Push Button



Part-number Description

LAS2	GQ	★	□	■	◇	○	△	▲	◎	☆
Code of series	The Front shape	Contact structure	Operation Type	Lamp Type	Illuminated type	Lamp color and colorized button	Lamp Voltage	Crust material	IP Rating	
	F Flat Round H High Round C Concave round G High concave round PF Super Flat Head +Flat Button PH Super Flat Head +High Flat Button	11 1NO1NC 22 2NO2NC No letter means signal lamp	Z Latching No letter means Momentary	D Dot E Ring	T Power symbol No letter means standard type Other symbol can be made to order	R Red G Green Y Yellow O Orange B Blue W White	AC/DC 6V AC/DC 12V AC/DC 24V AC/DC 110V AC/DC 220V Note: Other voltage can be made to order	N Nickel-plated Brass S Stainless steel Alloy A Aluminium Alloy	FP IP67 No letter means IP40	

Note: Pls read the catalogue carefully, and choose the right part-number according to the sign.

Specifications

Operating Temperature	-25°C~+55°C(no freezing) keep the air flowing around illuminated pushbutton
Operating Humidity	45~85%RH(no condensation)
Contact Resistance	≤50 mΩ
Insulation Resistance	≥1000MΩ
Dielectric Strength	1500V,A C50Hz, 1 minute
Vibration Resistance	50Hz,Amplitude 1.2mm
Shock Resistance	> 10g
Solder Heat Resistance	320°C(or 30W soldering iron) no more than 2 seconds)

Switch Rating

Rated Insulation Voltage U_i		250V			
Thermal Current I_{th}		3A			
Rated voltage		12V	24V	110V	220V
Rated Operation Current	AC Resistive load	—	—	1A	0.5A
	50/60Hz Inductive load	—	—	0.7A	0.5A
	DC Resistive load	1A	1A	0.2A	—
	DC Inductive load	0.7A	0.7A	0.1A	—
Contact material		Silver Alloy			

Minimum load: 3VAC/DC,5mA(Reference)
Application scope depends on operating environment and load type

Standard and Certification

Standard	Certification Mark	Certificate Authority/Certification Number
GB14048.5-2008	CCC	CCC/2011010305485983
EN61058-1:2002+A2:2008	CE	VOV/VT11018805
EN60947-1:2004	CE	CTS/CTS070706-01006-E

Lamp Ratings

Lamp Type	LED lamp(AC/DC)
Led Color	R G Y O B W
Life	40000 hours (Reference)
Rated Voltage	AC/DC6V,AC/DC12V,AC/DC24V,AC/DC36V,AC110V,AC250V
Rated Current	5~48V About 15mA; 110~250V About 2mA
Dropping Way	Inner resistance,Outer resistance when using 6V lamp.
Lamp Circuit Diagram	Using AC/DC LED lamp,the terminals have no difference of anode and cathode.Using inner resistance,do not need connect outer resistance. Using 6V lamp when the lamp voltage is above 60V,and need connect outer droppingresistance.

Note: DC LED and other voltage can be made to order.

Switching Operation

Type	C
Sign	NO — NC —
Diagram	NO — NC —

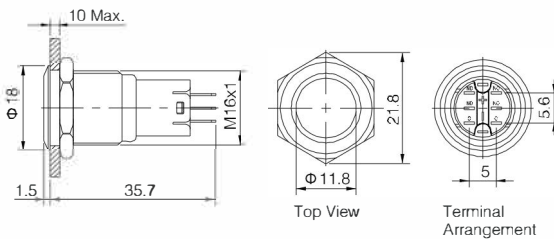
Explanation:Using three terminals,single-break and fast-motion change over contact.

Terminal Description

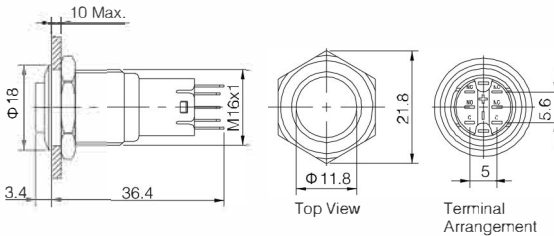
	<p>Two sets at most. C1,NO1,NC1 and C2,NO2,NC2 are one set respectively; C is commonused, NO is normal opened,NC is normal closed; +, - are lamp terminals,the standard LED have no difference of anode and cathode; Lamp and switch are relatively independent and canuse switch or peripheral circuit to control the lamp state.</p>
--	--



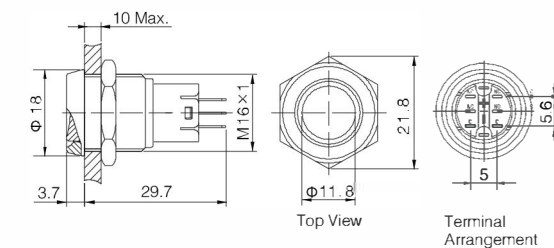
- Install diameter: $\Phi 16\text{mm}$
- Switch Max Rating: Ith:3A, Ui:250V
- Button shape: Flat Round
- Contact Configuration(□): 1NO1NC(11)/ 2NO2NC(22)
- Operation Type(■): Momentary / Latching(Z)
- Crust material(○): Stainless steel(S)/ Nickel plated brass(N)/Aluminium Alloy(A)
- IP Rating(☆): IP40/IP67(FP),IK09



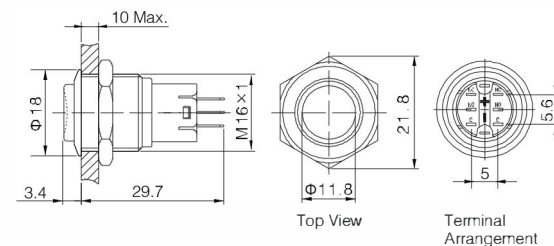
- Install diameter: $\Phi 16\text{mm}$
- Switch Max Rating: Ith:3A, Ui:250V
- Button shape: High Flat Round
- Contact Configuration(□): 1NO1NC(11)/ 2NO2NC(22)
- Operation Type(■): Momentary / Latching(Z)
- Crust material(○): Stainless steel(S)/ Nickel plated brass(N)/Aluminium Alloy(A)
- IP Rating(☆): IP40/IP67(FP),IK09



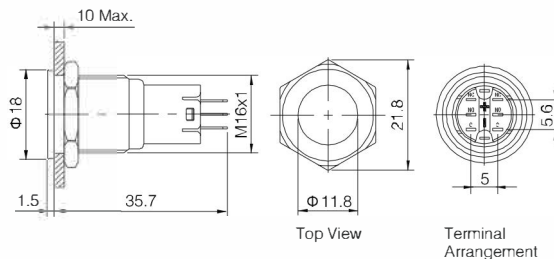
- Install diameter: $\Phi 16\text{mm}$
- Switch Max Rating: Ith:3A, Ui:250V
- Button shape: Concave Round
- Contact Configuration(□): 1NO1NC(11)/ 2NO2NC(22)
- Operation Type(■): Momentary / Latching(Z)
- Crust material(○): Stainless steel(S)/ Nickel plated brass(N)/Aluminium Alloy(A)
- IP Rating(☆): IP40/IP67(FP),IK09



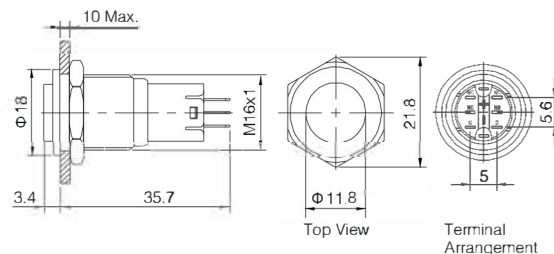
- Install diameter: $\Phi 16\text{mm}$
- Switch Max Rating: Ith:3A, Ui:250V
- Button shape: High Concave Round
- Contact Configuration(□): 1NO1NC(11)/ 2NO2NC(22)
- Operation Type(■): Momentary / Latching(Z)
- Button Color(Δ): **R G Y O B W N**
- Crust material(○): Stainless steel(S)/ Nickel plated brass(N)
- IP Rating(☆): IP40/IP67(FP),IK09



- Install diameter: $\Phi 16\text{mm}$
- Switch Max Rating: Ith:3A, Ui:250V
- Button shape: Super Flat Round
- Contact Configuration(□): 1NO1NC(11)/ 2NO2NC(22)
- Operation Type(■): Momentary / Latching(Z)
- Crust material(○): Stainless steel(S)/ Nickel plated brass(N)
- IP Rating(☆): IP40/IP67(FP),IK09

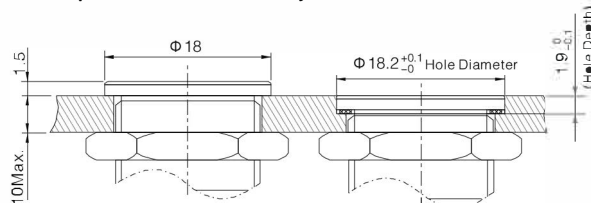


- Install diameter: $\Phi 16\text{mm}$
- Switch Max Rating: Ith:3A, Ui:250V
- Button shape: High Super Flat Round
- Contact Configuration(□): 1NO1NC(11)/ 2NO2NC(22)
- Operation Type(■): Momentary / Latching(Z)
- Crust material(○): Stainless steel(S)/ Nickel plated brass(N)
- IP Rating(☆): IP40/IP67(FP),IK09



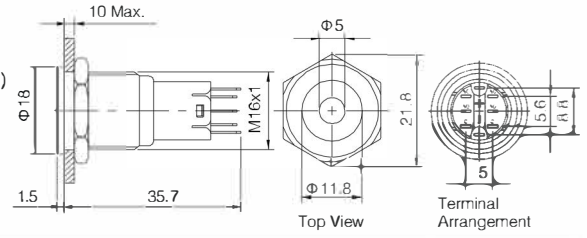
LAS2GQF-□■/○/☆		LAS2GQPF-□■/○/☆	
LAS2GQH-□■/○/☆		LAS2GQPH-□■/○/☆	
LAS2GQC-□■/○/☆		LAS2GQG-□■/△/○/☆	
Terminal Type	Pin Terminal(1.8x0.4mm)	Material	Button StainlessSteel/Aluminium alloy (Black)
Switching	C(single-breakfast-motion changeover contact)	Crust	Stainless steel/Nickel plated Brass/ Aluminium alloy black anodized
Panel Thickness	1 ~ 10mm	Base	PA
Torque	0.6Nm	Operation Pressure	1.5~2N
Mechanical Life	200,000 cycles	Operation Travel	About 2.8mm
Electrical Life	50,000 cycles	RoHS	Made to order

LAS2GQ super flat head install way:

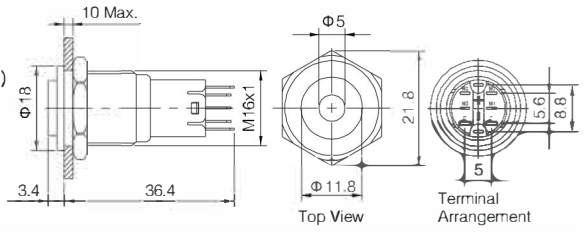




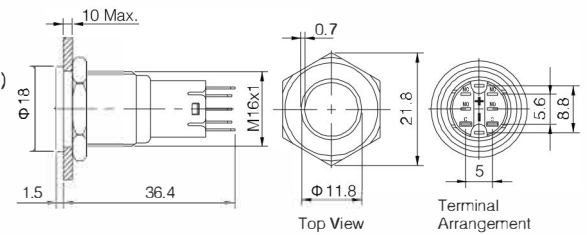
- ☉ If you need Indicator, The part number is: LAS2GQPF-D/Δ/▲/◎/☆
- ☉ Install diameter: Φ 16mm
- ☉ Switch Max Rating: Ith:3A, Ui:250V
- ☉ Button shape: Super flat head Dot illuminated
- ☉ Contact Configuration(□): 1NO1NC(11)/ 2NO2NC(22)
- ☉ Operation Type(■): Momentary / Latching(Z)
- ☉ LED Color(Δ): R G Y O B W
- ☉ LED Voltage(▲): 6V/12V/24V/110V/220V
- ☉ Crust material(◎): Stainless steel(S)/ Nickel plated brass(N)
- ☉ IP Rating(☆): IP40/IP67(FP),IK09



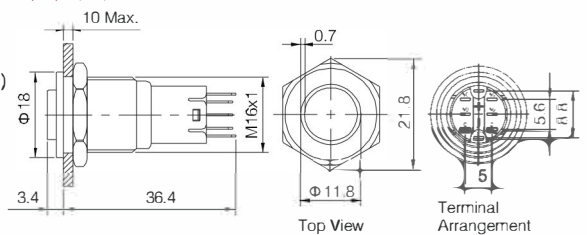
- ☉ If you need Indicator, The part number is: LAS2GQPH-D/Δ/▲/◎/☆
- ☉ Install diameter: Φ 16mm
- ☉ Switch Max Rating: Ith:3A, Ui:250V
- ☉ Button shape: Super High flat head Dot illuminated
- ☉ Contact Configuration(□): 1NO1NC(11)/ 2NO2NC(22)
- ☉ Operation Type(■): Momentary / Latching(Z)
- ☉ LED Color(Δ): R G Y O B W
- ☉ LED Voltage(▲): 6V/12V/24V/110V/220V
- ☉ Crust material(◎): Stainless steel(S)/ Nickel plated brass(N)
- ☉ IP Rating(☆): IP40/IP67(FP),IK09



- ☉ If you need Indicator, The part number is: LAS2GQPF-E/Δ/▲/◎/☆
- ☉ Install diameter: Φ 16mm
- ☉ Switch Max Rating: Ith:3A, Ui:250V
- ☉ Button shape: Super flat head Ring illuminated
- ☉ Contact Configuration(□): 1NO1NC(11)/ 2NO2NC(22)
- ☉ Operation Type(■): Momentary / Latching(Z)
- ☉ LED Color(Δ): R G Y O B W
- ☉ LED Voltage(▲): 6V/12V/24V/110V/220V
- ☉ Crust material(◎): Stainless steel(S)/ Nickel plated brass(N)
- ☉ IP Rating(☆): IP40/IP67(FP),IK09

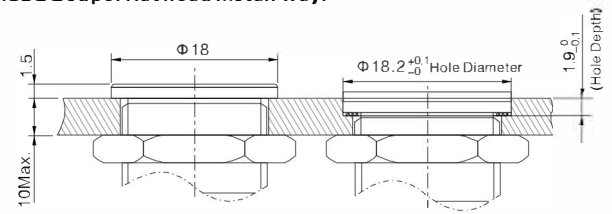


- ☉ If you need Indicator, The part number is: LAS2GQPH-E/Δ/▲/◎/☆
- ☉ Install diameter: Φ 16mm
- ☉ Switch Max Rating: Ith:3A, Ui:250V
- ☉ Button shape: High Super flat head Ring illuminated
- ☉ Contact Configuration(□): 1NO1NC(11)/ 2NO2NC(22)
- ☉ Operation Type(■): Momentary / Latching(Z)
- ☉ LED Color(Δ): R G Y O B W
- ☉ LED Voltage(▲): 6V/12V/24V/110V/220V
- ☉ Crust material(◎): Stainless steel(S)/ Nickel plated brass(N)
- ☉ IP Rating(☆): IP40/IP67(FP),IK09



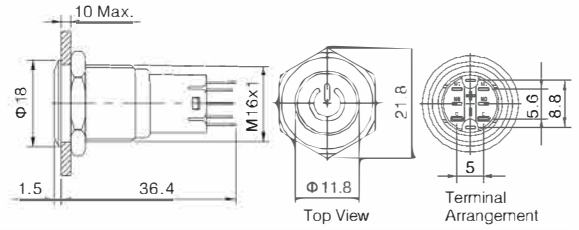
LAS2GQPF-□■D/Δ/▲/◎/☆		LAS2GQPH-□■D/Δ/▲/◎/☆	
LAS2GQPF-□■E/Δ/▲/◎/☆		LAS2GQPH-□■E/Δ/▲/◎/☆	
Terminal Type	Pin Terminal(1.8x0.4mm)	Material	Lamp Cover Stainless Steel/Aluminium alloy (Black)
Switching	C(single-breakfast-motion changeover contact)		Body Stainless steel/Nickel plated Brass
Panel Thickness	1 ~ 10mm		Base PA
Torque	0.6Nm	Operation Pressure	1.5~2N
Mechanical Life	200,000 cycles	Operation Travel	About 2.8mm
Electrical Life	50,000 cycles	RoHS	Made to order

LAS2GQ superflat head install way:

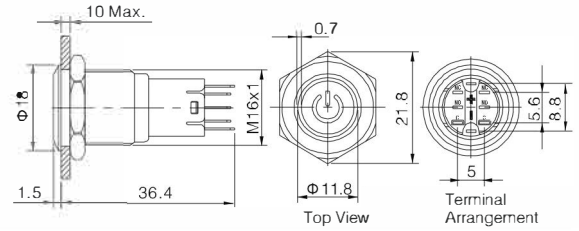




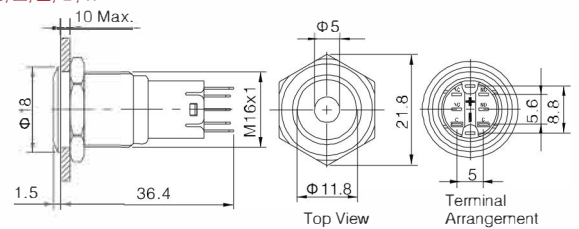
- If you need Indicator, The part number is: LAS2GQF-DT/△/▲/○/☆
- Install diameter: Φ 16mm
- Switch Max Rating: Ith:3A, Ui:250V
- Button shape: Flat head
- Contact Configuration(□): 1NO1NC(11)/ 2NO2NC(22)
- Operation Type(■): Momentary / Latching(Z)
- LED Color(△): R G Y O B W
- LED Voltage(▲): 6V/12V/24V/110V/220V
- Crust material(○): Stainless steel(S)/ Nickel plated brass(N)
- IP Rating(☆): IP40/IP67(FP),IK09



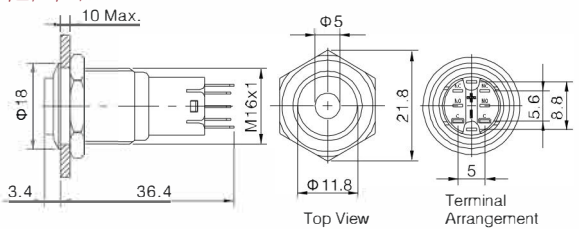
- If you need Indicator, The part number is: LAS2GQF-ET/△/▲/○/☆
- Install diameter: Φ 16mm
- Switch Max Rating: Ith:3A, Ui:250V
- Button shape: Flat head Ring illuminated
- Contact Configuration(□): 1NO1NC(11)/ 2NO2NC(22)
- Operation Type(■): Momentary / Latching(Z)
- LED Color(△): R G Y O B W
- LED Voltage(▲): 6V/12V/24V/110V/220V
- Crust material(○): Stainless steel(S)/ Nickel plated brass(N)
- IP Rating(☆): IP40/IP67(FP),IK09



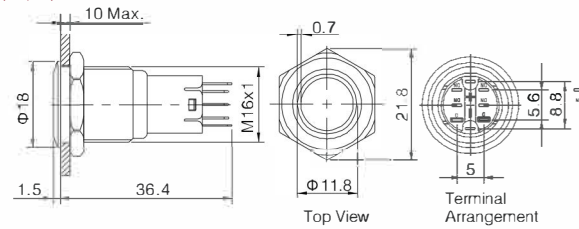
- If you need Indicator, The part number is: LAS2GQF-D/△/▲/○/☆
- Install diameter: Φ 16mm
- Switch Max Rating: Ith:3A, Ui:250V
- Button shape: Flat head Dot illuminated
- Contact Configuration(□): 1NO1NC(11)/ 2NO2NC(22)
- Operation Type(■): Momentary / Latching(Z)
- LED Color(△): R G Y O B W
- LED Voltage(▲): 6V/12V/24V/110V/220V
- Crust material(○): Stainless steel(S)/ Nickel plated brass(N)/Aluminium anodized(A)
- IP Rating(☆): IP40/IP67(FP),IK09



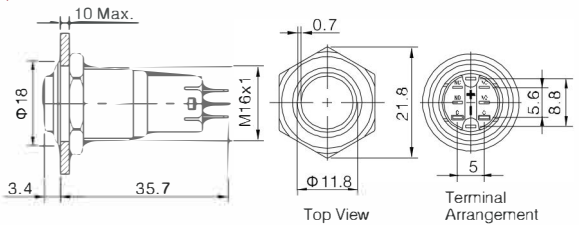
- If you need Indicator, The part number is: LAS2GQH-D/△/▲/○/☆
- Install diameter: Φ 16mm
- Switch Max Rating: Ith:3A, Ui:250V
- Button shape: High Flat head Dot illuminated
- Contact Configuration(□): 1NO1NC(11)/ 2NO2NC(22)
- Operation Type(■): Momentary / Latching(Z)
- LED Color(△): R G Y O B W
- LED Voltage(▲): 6V/12V/24V/110V/220V
- Crust material(○): Stainless steel(S)/ Nickel plated brass(N)/Aluminium anodized(A)
- IP Rating(☆): IP40/IP67(FP),IK09



- If you need Indicator, The part number is: LAS2GQF-E/△/▲/○/☆
- Install diameter: Φ 16mm
- Switch Max Rating: Ith:3A, Ui:250V
- Button shape: Flat head Ring illuminated
- Contact Configuration(□): 1NO1NC(11)/ 2NO2NC(22)
- Operation Type(■): Momentary / Latching(Z)
- LED Color(△): R G Y O B W
- LED Voltage(▲): 6V/12V/24V/110V/220V
- Crust material(○): Stainless steel(S)/ Nickel plated brass(N)/Aluminium anodized(A)
- IP Rating(☆): IP40/IP67(FP),IK09



- If you need Indicator, The part number is: LAS2GQH-E/△/▲/○/☆
- Install diameter: Φ 16mm
- Switch Max Rating: Ith:3A, Ui:250V
- Button shape: High Flat head Ring illuminated
- Contact Configuration(□): 1NO1NC(11)/ 2NO2NC(22)
- Operation Type(■): Momentary / Latching(Z)
- LED Color(△): R G Y O B W
- LED Voltage(▲): 6V/12V/24V/110V/220V
- Crust material(○): Stainless steel(S)/ Nickel plated brass(N)/Aluminium anodized(A)
- IP Rating(☆): IP40/IP67(FP),IK09



LAS2GQF-□■DT/△/▲/○/☆
 LAS2GQF-□■D/△/▲/○/☆
 LAS2GQF-□■E/△/▲/○/☆

LAS2GQF-□■ET/△/▲/○/☆
 LAS2GQH-□■D/△/▲/○/☆
 LAS2GQH-□■E/△/▲/○/☆

Terminal Type	Pin Terminal(1.8x0.4mm)	Material	Button	StainlessSteel/Aluminium alloy (Black)
Switching	C(single-break/ast-motion changeover contact)		Crust	Stainless steel/Nickel plated Brass/ Aluminium alloy black anodized
Panel Thickness	1 ~ 10mm		Base	PA
Torque	0.6Nm	Operation Pressure	1.5~2N	
Mechanical Life	200,000 cycles	Operation Travel	About 2.8mm	
Electrical Life	50,000 cycles	RoHS	Made to order	

