

KS12 PUSH BUTTON SWITCHES



KS12-A1.5-BWN-5N-S



KS12-A1.5-BYN-5N-S



KS12-GO2.0-WWN-6/12N-S

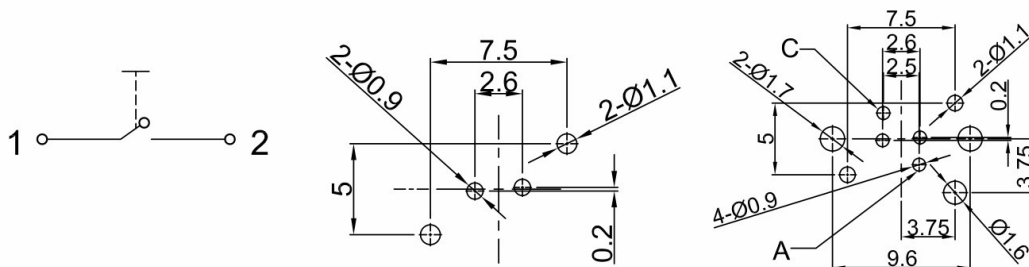


KS12-AL1.5-BBG-5N-S

SPECIFICATIONS

Circuit	: SPST 1P1T
Current Rating	: 10mA min./100mA max.
Voltage Rating	: 2V DC min./30V DC max.
Dielectric withstanding voltage	: 500VAC for 1 minute
Contact Resistance	: 50mΩ Max. (Initial)
Insulation Resistance	: 100MΩ Min.
Operating Force	: 600±100gf
Total Travel	: 1.5±0.4mm
Mechanical life	: 1,000,000 cycles Min
Bounce time	: ≤1ms
	Operating speed 100 mm/s(3.94/s)
Solder Specifications	: 260°C for 5 seconds
Operating temperature	: - 40°C ~ + 85°C
Protection class	: IP40

Circuit、P.C.B layout



How to order

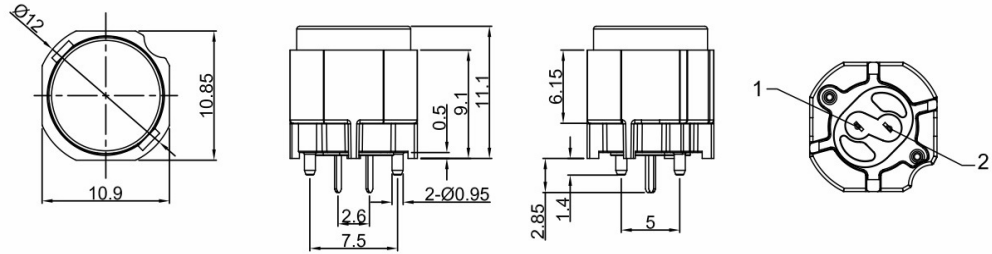
KS12	A 2	B B N	5N	S			
Model 型号	Body Type 基座类型	Travel 操作行程	Body Color 基座颜色	Cap Color 上盖颜色	LED Color 灯颜色	Operating Force 操作力度	Terminal Type 端子类型
A	No snap-in peges 无卡扣	1 1.0mm	A Gray 灰色	W White 白色	N Without LED	2.5N 250gf	S
AL	No snap-in peges with LED 无卡扣/带灯	1.5 1.5mm	B Black 黑色	R Red 红色	R Red 红灯	5N 500gf	P
P	With snap-in peges 带卡扣	2 2.0mm	W White 白色	G Green 绿色	Y Yellow 黄灯	6N 600gf	
PL	With snap-in peges with LED 带卡扣/带灯			B Black 黑色	G Green 绿灯	6/12N 600gf/1200gf	
C	Sealed contact with rubber cap(IP67) 带防水帽			A Gray 灰色	U Blue 蓝灯		
GO	Two-step switch 两段式			Y Yellow 黄色	W White 白灯		
				T Transparence 透明	O Orange 橙色		
				O Orange 橙色	R/G Red/Green 红绿双色		
				S Silver 银色	R/U Red/Blue 红蓝双色		

KS12 PUSH BUTTON SWITCHES

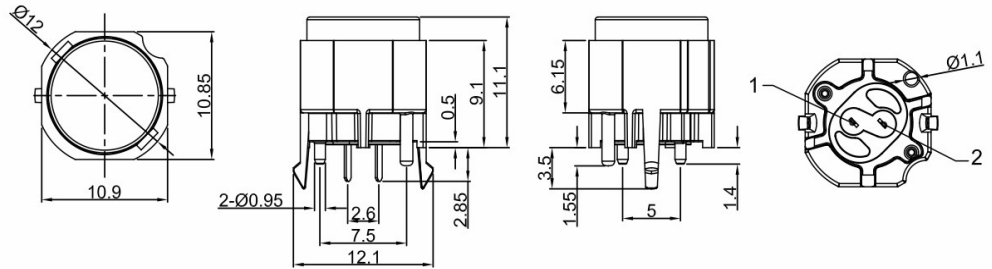
Drawing



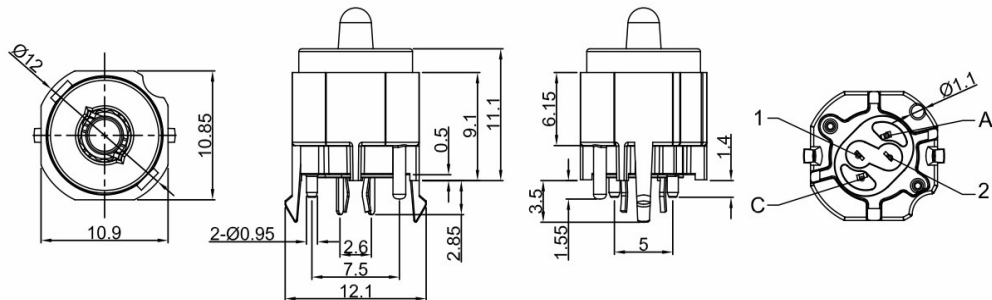
KS12-A1.5-BRN-5N-S



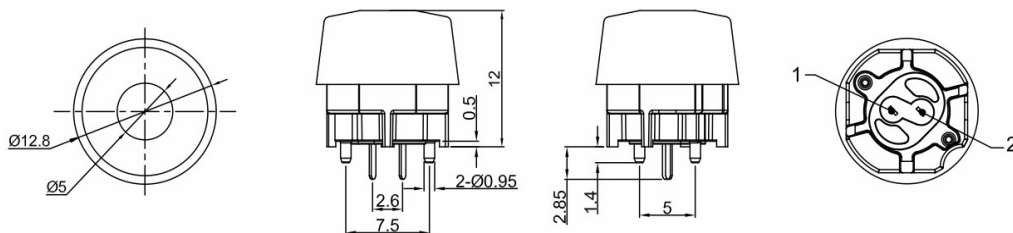
KS12-P1.5-BBN-5N-S



KS12-PL1.5-BBR-5N-S



KS12-C1.5-BBN-5N-S



KS12-SL1.5-BOO-5N-P

