

MR-1 SERIES ROCKER SWITCHES



MR-1-110-C5N-BB



MR-1-115-C5N-BB



MR-1-138-C6N-BB



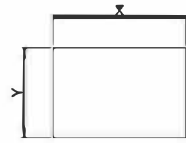
MR-1-116-C5N-BB



MR-1-110-C5N-BB

SPECIFICATIONS

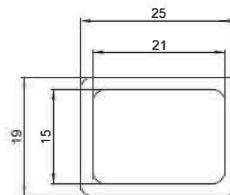
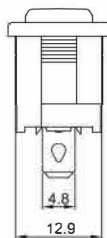
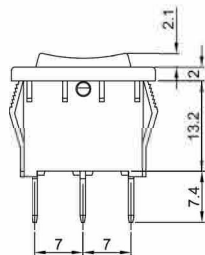
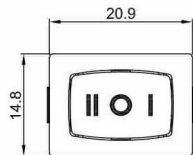
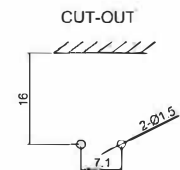
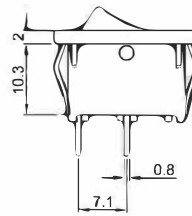
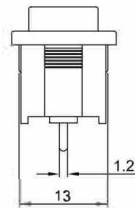
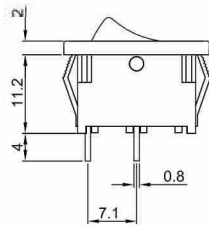
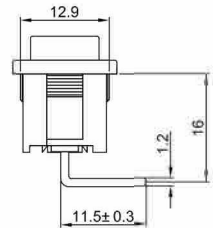
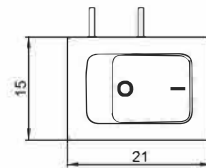
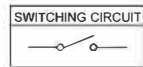
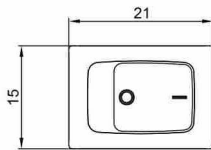
Rating	: 12A 125VAC (UL CUL) : 10A 250VAC (VDE CQC ENEC)
Contact Resistance	: 50mΩ Max
Insulation Resistance	: DC 500V 100MΩ Min
Dielectric Strength	: AC 1500V 1 minute
Mechanical Life	: Over 30,000 Cycles
Electrical Life	: Over 10,000 cycles
Operating Temperature	: -20°C ~ 85°C
Safety Approval	



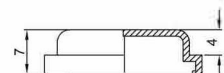
MOUNTING HOLE

CUT-OUT

	X	Y
0.75-1.25	19.2-0.1	13.0+0.1
1.25-2.00	19.4-0.1	13.0+0.1
2.00-3.00	19.8-0.1	13.0+0.1



PVC CAP



带灯轻触开关

带灯按钮开关

按钮开关

金属按钮开关

翘板开关

保险插座

光电触摸开关

旋转开关

MR-1 SERIES ROCKER SWITCHES



MR-1-110-C5L-BR



MR-1-110-W0L-BB



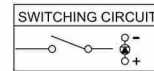
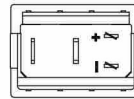
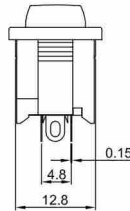
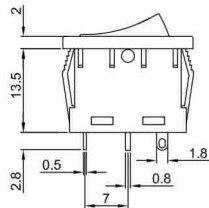
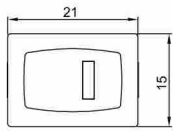
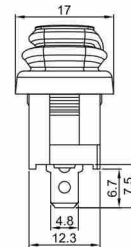
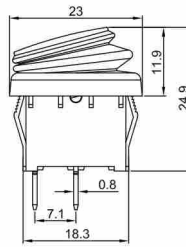
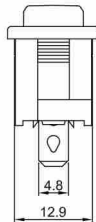
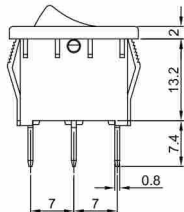
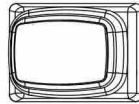
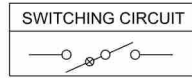
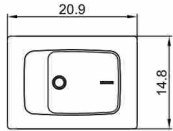
WR-1-110-P6N-BB



WR-1-110-P0N-BR



MR-1-110-P0L-BR



Model 型号	Function 功能	Terminal type 端子种类	Actuator shape 柄形状	Marking 印字	Illuminated 带灯指示	Body color 基座颜色	Actuator color 柄颜色	Current 电流	Light Voltage 灯电压
MR-1									
11	ON-OFF 2P	0	C	0 None	N None 不带灯	B Black 黑色	B Black 黑色	- 10A	NONE
12	ON-ON 3P	1	W	1	L Neon 氖灯	A Gray 灰色	R Red 红色	BB 15A	3 3V
13	ON-OFF-ON 3P	2	P	2 I II	E LED	W White 白色	A Gray 灰色		12 12V
14	OFF-(ON) 2P	3	F	3	W Tungsten lamp 钨丝灯		W White 白色		110 110V
15	ON-(OFF) 2P	4		4			Y Yellow 黄色		220 220V
16	(ON)-OFF-(ON) 3P	5		5			U Blue 蓝色		
17	(ON)-OFF-ON 3P	6	A	6 I/O II					
18	(ON)-ON 3P	8	9	8					

Notes:

1. 端子种类4代表弯向:

Terminal type Indicate:

2. 端子种类5代表弯向:

Terminal type Indicate:

MR-2 SERIES ROCKER SWITCHES



MR-2-110-C5N-BB



MR-2-130-C6N-BB



MR-2-114-C5N-BR



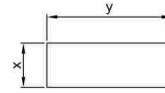
MR-2-113-C5N-WW



防水帽

SPECIFICATIONS

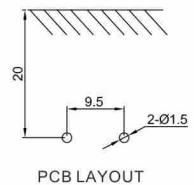
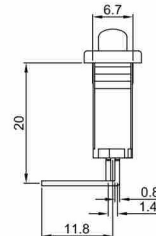
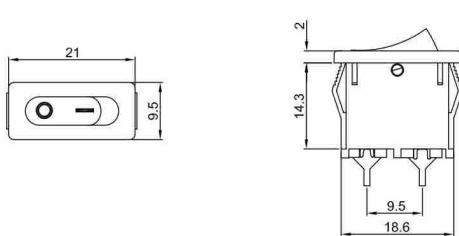
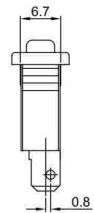
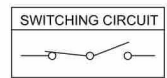
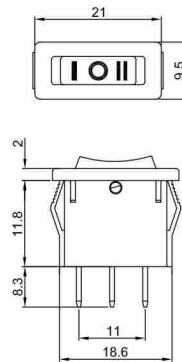
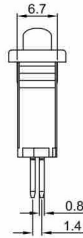
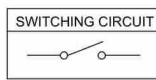
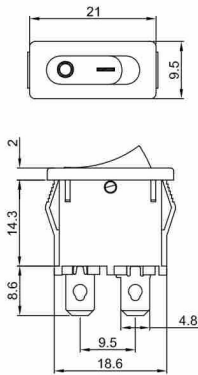
Rating :12A 125VAC (UL CUL)
 10A 250VAC (VDE CQC ENEC)
 Contact Resistance :50mΩ Max
 Insulation Resistance :DC 500V 100MΩ Min
 Dielectric Strength :AC 1500V 1 minute
 Electrical Life :10,000 Cycles
 Safety Approval



MOUNTING HOLE

CUT-OUT

	X	Y
0.75~1.25	6.8-0.1	19.2±0.1
1.25~2.00	6.8-0.1	19.2±0.1
2.00~3.00	6.8-0.1	19.2±0.1



MR-2 — 1 1 0 — C 5 N — B B

Model 型号	Function 功能	Terminal type 端子种类	Actuator shape 柄形状	Marking 印字	Illuminated 带灯指示	Body color 基座颜色	Actuator color 柄颜色
11	ON-OFF	2P	0	0 None	N None 不带灯	B Black 黑色	B Black 黑色
12	ON-ON	3P	2	1		A Gray 灰色	R Red 红色
13	ON-OFF-ON	3P	3	3		W White 白色	A Gray 灰色
			4	4		R Red 红色	W White 白色
			5	5		P Purple 紫色	Y Yellow 黄色
			6	6			U Blue 蓝色
							P Purple 紫色

Notes:
 1.端子种类4代表弯向:
 Terminal type Indicate:
 2.端子种类5代表弯向:
 Terminal type Indicate:

带灯轻触开关

带灯按钮开关

按钮开关

金属按钮开关






翘板开关

保险丝座

光电触摸开关

旋转开关

SPECIFICATIONS

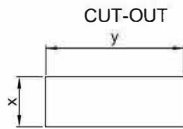
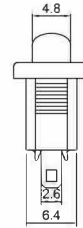
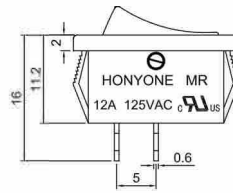
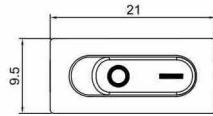
Rating	: 12A 125VAC (UL CUL)
	: 10A 250VAC (VDE CQC ENEC)
Contact Resistance	: 20mΩ Max
Insulation Resistance	: DC 500V 100MΩ Min
Dielectric Strength	: AC 1500V 1 minute
Operating Force	: 300±100gf
Mechanical Life	: 50,000cycles
Load Life	: 10,000 Cycles
Operating Temperature	: 0°C~85°C
Safety Approval	:     



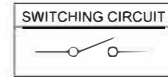
MR-2B-110-C5N-BB MR-2B-110-C5N-BB+防水罩

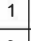
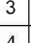
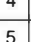



MR-2B-110-C5N-WW



	X	Y
0.75~1.25	6.5±0.1	19.1-0.1
1.25~2.00	6.5±0.1	19.2-0.1
2.00~3.00	6.5±0.1	19.3-0.1



Model 型号	Function 功能	Terminal type 端子种类	Actuator shape 柄形状	Marking 印字	Illuminated 带灯指示	Body color 基座颜色	Actuator color 柄颜色
MR-2B							
11	ON-OFF	2P	C	0 None	N None 不带灯	B Black 黑色	B Black 黑色
12	ON-ON	3P		1 		A Gray 灰色	R Red 红色
				3 		W White 白色	A Gray 灰色
				4 			W White 白色
				5 			

MR-3 SERIES ROCKER SWITCHES



MR-3-220-C5N-BB



MR-3-220-C3N-BB

SPECIFICATIONS

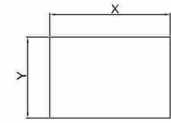
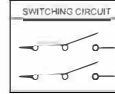
Rating	: 12A 125VAC (UL CUL) 10A 250VAC (VDE CQC ENEC)
Contact Resistance	: 50mΩ Max
Insulation Resistance	: DC 500V 100MΩ Min
Dielectric Strength	: AC 1500V 1 minute
Electrical Life	: 10,000 Cycles
Safety Approval	



MR-3-230-C6N-BB

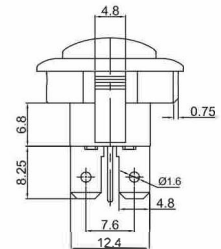
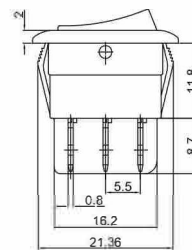
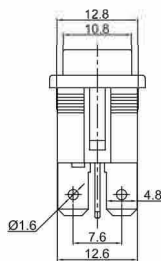
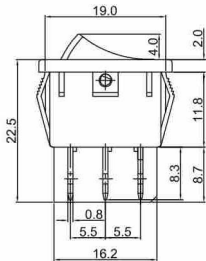
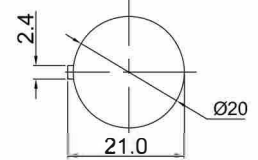
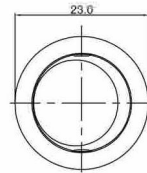
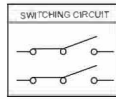
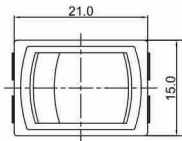


MR-3-220-R5N-BB



MOUNTING HOLE CUT-OUT

	X	Y
0.75~1.25	19.2-0.1	12.9+0.15
1.25~2.00	19.4-0.1	12.9+0.15
2.00~3.00	19.8-0.1	12.9+0.15



Model 型号	Function 功能	Terminal type 端子种类	Actuator shape 柄形状	Marking 印字	Illuminated 带灯指示	Body color 基座颜色	Actuator color 柄颜色	Light Voltage 灯电压
MR-3								
22	ON-ON 6P	0	C	0 None	N None 不带灯	B Black 黑色	B Black 黑色	None
23	ON-OFF-ON 6P		R	1	L Neon 氖灯	A Gray 灰色	R Red 红色	12 12V
26	(ON)-ON 6P			2	W Tungsten 钨丝灯	W White 白色	A Gray 灰色	110 110V
27	(ON)-OFF-(ON) 6P			3			W White 白色	220 220V
				4			Y Yellow 黄色	
				5			U Blue 蓝色	
				6			G Green 绿色	
				7				
				8				

带灯轻触开关

带灯按钮开关

按钮开关

金属按钮开关

翘板开关

保险丝座

光电触摸开关

旋转开关

MR-6 SERIES ROCKER SWITCHES



MR-6-210-C5N-BB

MR-6-211-C5N-BB

MR-6-213-C5N-BB

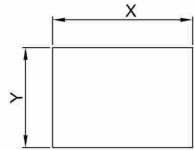
MR-6-210-C5L-BR

MR-6C-210-C5L-BG

WR-6-210-C5L-BG

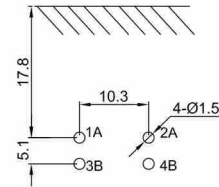
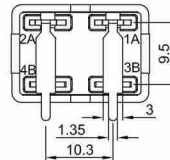
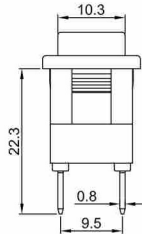
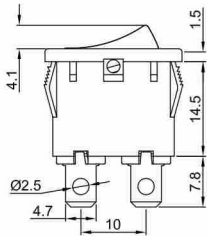
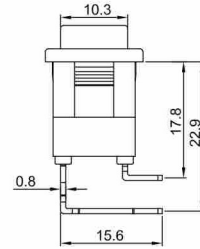
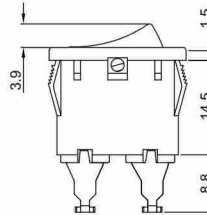
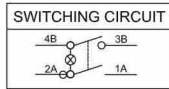
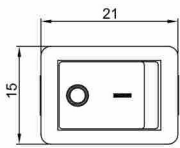
SPECIFICATIONS

Rating	:12A 125VAC (UL CUL) 10A 250VAC (CQC ENEC)
Contact Resistance	:20mΩ Max
Insulation Resistance	:DC 500V 100MΩ Min
Dielectric Strength	:AC 1500V 1 minute
Operating Force	:450±200gf
Mechanical Life	:50,000 Cycles
Load Life	:10,000cycles
Operating Temperature	:0°C~85°C
Safety Approval	



MOUNTING HOLE

	X	Y
0.75~1.25	19.2-0.1	13.0+0.1
1.25~2.00	19.4-0.1	13.0+0.1
2.00~3.00	19.8-0.1	13.0+0.1



MR-6 2 1 0 C 5 N B B 220

Model 型号	Function 功能	Terminal type 端子种类	Actuator shape 柄形状	Marking 印字	Illuminated 带灯指示	Body color 底座颜色	Actuator color 柄颜色	Light Voltage 灯电压
11	ON-OFF	2P	C	0 None	N None 不带灯	B Black 黑色	B Black 黑色	NONE
21	ON-OFF	4P		1	L Neon 氖灯	A Gray 灰色	R Red 红色	12 12V
31	ON-OFF	3P		2	W Tungsten lamp 钨丝灯	W White 白色	A Gray 灰色	110 110V
				4	E LED		W White 白色	220 220V
				5			Y Yellow 黄色	
				6			U Blue 蓝色	
							G Green 绿色	
							O Orange 桔色	

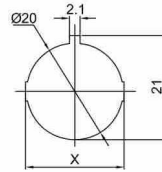
MR-5 SERIES ROCKER SWITCHES



MR-5-110-C5L-BR MR-5-110-HOL-BR WR-5-110-P0W-BG MR-5-110-C5N-BB MR-5-130-C6N-BB MR-5-110-R0L-BU

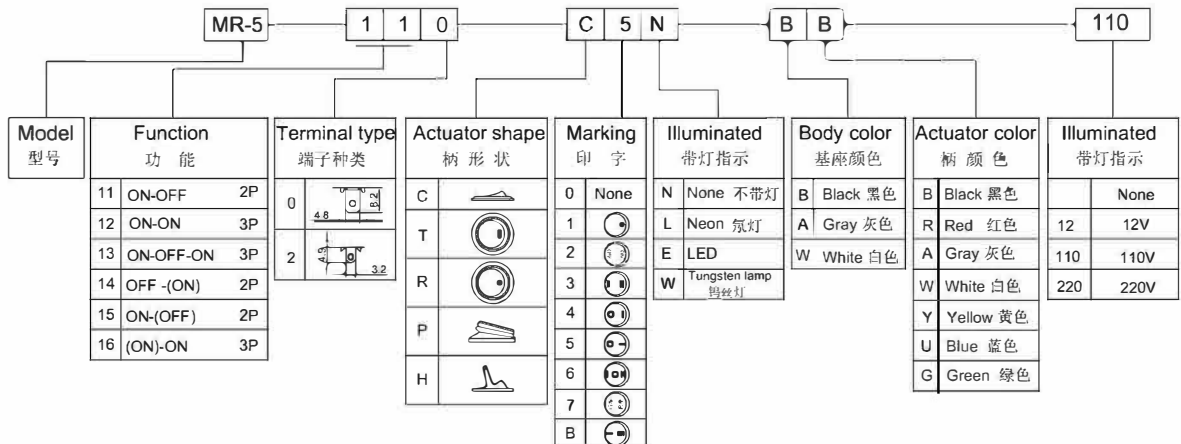
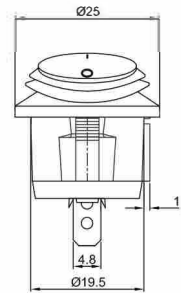
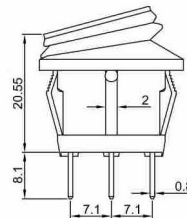
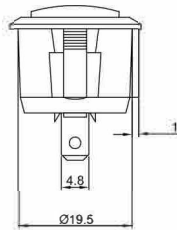
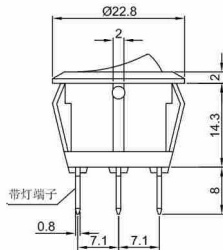
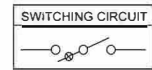
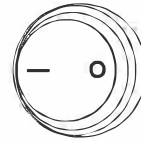
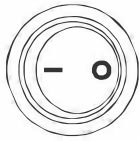
SPECIFICATIONS

Rating : 12A 125VAC (UL CUL)
 : 10A 250VAC (VDE CQC ENEC)
 Contact Resistance : 50mΩ Max
 Insulation Resistance : DC 500V 100MΩ Min
 Dielectric Strength : AC 1500V 1 minute
 Electrical Life : 10,000 Cycles
 Safety Approval :



	X
0.75~1.25	20.2
1.25~2.00	20.4
2.00~3.00	20.6

MOUNTING HOLE



带灯轻触开关

带灯按钮开关

按钮开关

金属按钮开关

翘板开关

保险丝座

光电触摸开关

旋转开关

MR-6A SERIES ROCKER SWITCHES



MR-6A-210-C5N-BB

MR-6A-210-C5L-BG

MR-6A-210-C5E-BW

MR-6A-210-CXL-BR

WR-5A-210-C5L-BR

防水帽

SPECIFICATIONS

Rating : 12A 125VAC (UL CUL)
 10A 250VAC (VDE CQC ENEC)

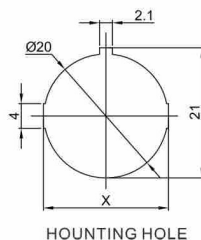
Contact Resistance : 50mΩ Max

Insulation Resistance : DC 500V 100MΩ Min

Dielectric Strength : AC 1500V 1 minute

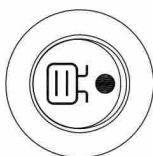
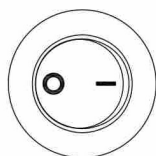
Electrical Life : 10,000 Cycles

Safety Approval :



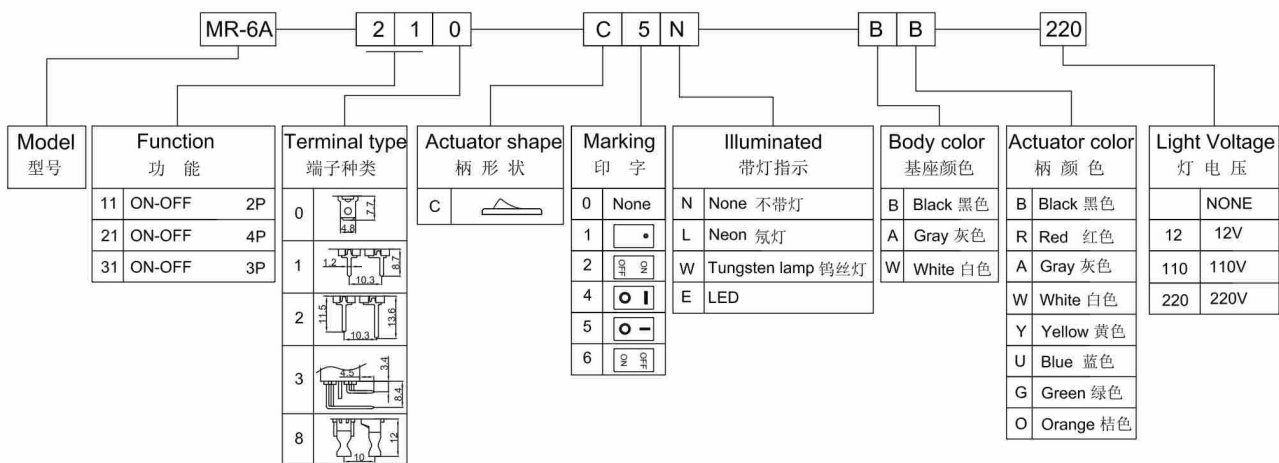
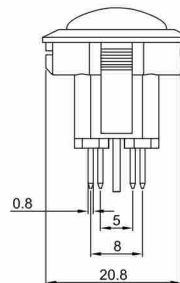
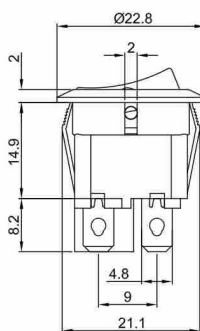
	X
0.75~1.25	20.2
1.25~2.00	20.4
2.00~3.00	20.6

HOUNTING HOLE



SWITCHING CIRCUIT

SWITCHING CIRCUIT



带灯轻触开关

带灯按钮开关

按钮开关

金属按钮开关

翘板开关

保险丝座

光电触摸开关

旋转开关