

Short body latching button
ONPOW63 Series

- ⊙ Mounting hole diameter: $\Phi 12$
- ⊙ Switch characteristics: slow-action / single-throw
- ⊙ Product features: Product features: innovative 12mm "short body self-locking" structure. Suitable for all kinds of scenes; more comfortable high flat keys, in line with the use of habits
- ⊙ Protection grade: IP65/IP67.



ONPOW63 Series model description

ONPOW63 ☆ ★ - □ ◇ / J / △ / ▲ / ○ / ※

Symbol	Symbol name	Specify
☆	Panel cutout dimension	12: $\Phi 12\text{mm}$ / $\Phi 8, 10, 16, 19, 22, 25\text{mm}$ is under development
★	Front shape	H: High Round / F: Flat Round / B: Spherical
□	Contact structure	10: 1NO / No letter means indicator
■	Operation type	Z: Latching / No letter means Momentary
◇	Lamp type	E: Ring / No letter means without lamp
◆	Connect type	J: Pin terminal
△	Lamp color	R: Red / G: Green / Y: Yellow / B: Blue / W: White
▲	Lamp voltage	6V / 12V ~24V with internal resistor, Other voltage levels can be customized and need to connect external resistors
○	Shell material	S: stainless steel / A: Aluminium alloy(black)
※	IP Degree	No letter means IP65 / FP: IP67

Note: please carefully read the specific description of the product and select the corresponding code in the table according to different symbols.

Performance Characteristic

Operating temperature	-25 ~ + 55°C (no freezing) keep the air flowing around illuminated push button
Operation Humidity	45~85%RH (no condensation)
Contact Resistor	$\leq 50\text{m}\Omega$
Insulation Resistor	$\geq 100\text{M}\Omega(500\text{VDC})$
Maximum withstand voltage	1500V, 50Hz AC, 1min
Vibration Resistance	50Hz, Amplitude 1.2mm
Solder-resistant heat	320°C 3s
Switch rating	2A/36VDC
Mechanical Life	$\geq 1000\text{K}$ cycles
Electrical Life	$\geq 50\text{K}$ cycles
Base material	PA
Nut torque	about 0.3Nm
Operation Pressure	around 2.5N
Operation Travel	around 2.4mm
Protecting level	IP65(IP67 can be made), IK07

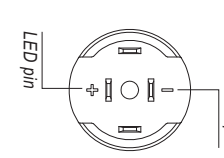
Switching Operation

Type	Diagram	Sign
X		

Lamp ratings

LED Life	Rated Current	Voltage fluctuation	Lamp Circuit Diagram
≥ 40000 hours	$\leq 15\text{mA}$	DC: 10% AC: 20%	 $\leq 24\text{V}$, Use inner protection resistors and no positive or negative distinction.

Terminal Description



+/- are lamp terminals, the standard LED, have no difference of anode and cathode, lamp and switch are relatively independent and can use switch or peripheral circuit to control the lamp state

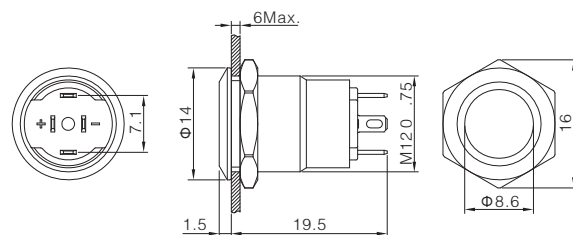


Product Picture Description Dimension



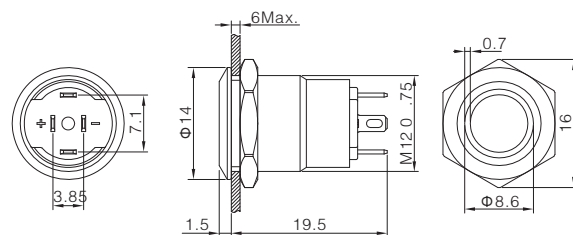
ONPOW6312F-10 ■ /J/S/ ※

Contact structure 1NO
 Operation type ■ Z: Latching / No letter means momentary
 Shell material Stainless steel
 Tail configuration Terminal pins(2*0.5mm)
 IP degree ※ No letter means IP65 / FP: IP67
 Applicable accessory M12-12F



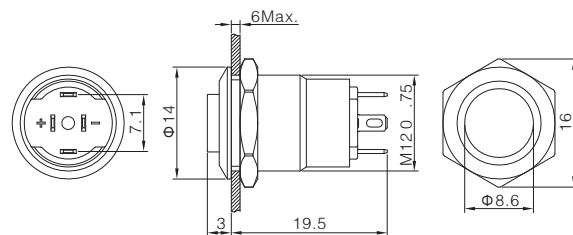
ONPOW6312F-10 ■ E/J/ Δ /▲ /S/ ※

Contact structure 1NO
 Operation type ■ Z: Latching / No letter means momentary
 LED color Δ R G Y B W
 LED voltage ▲ 6V / 12V ~ 24V
 Shell material Stainless steel
 Tail configuration Terminal pins(2*0.5mm)
 IP degree ※ No letter means IP65 / FP: IP67
 Applicable accessory M12-12F



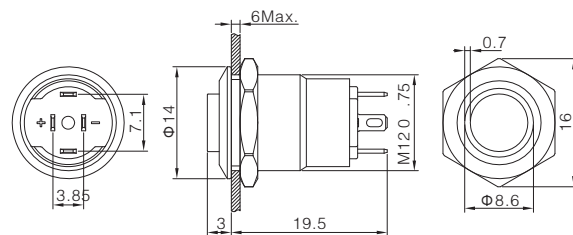
ONPOW6312H-10 ■ /J/S/ ※

Contact structure 1NO
 Operation type ■ Z: Latching / No letter means momentary
 Shell material Stainless steel
 Tail configuration Terminal pins(2*0.5mm)
 IP degree ※ No letter means IP65 / FP: IP67



ONPOW6312H-10 ■ E/J/ Δ /▲ /S/ ※

Contact structure 1NO
 Operation type ■ Z: Latching / No letter means momentary
 LED color Δ R G Y B W
 LED voltage ▲ 6V / 12V ~ 24V
 Shell material Stainless steel
 Tail configuration Terminal pins(2*0.5mm)
 IP degree ※ No letter means IP65 / FP: IP67



12mm Sealing cover M12-12F