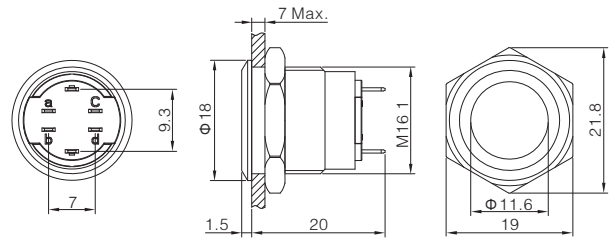




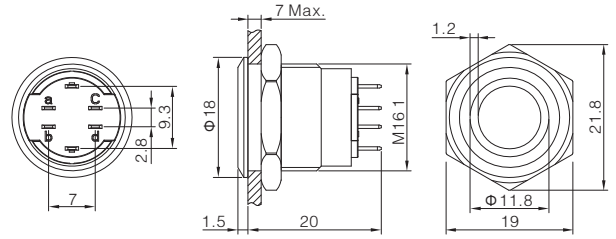
Flat Round
ONPOW6316F-10 ■/J/S/※

Contact structure 1NO
Operation type ■ Z: Latching / No letter means momentary
Shell material Stainless steel
Tail configuration Terminal pins(2*0.5mm)
IP degree※ No letter means IP65 / FP: IP67
Applicable accessory M12-16F



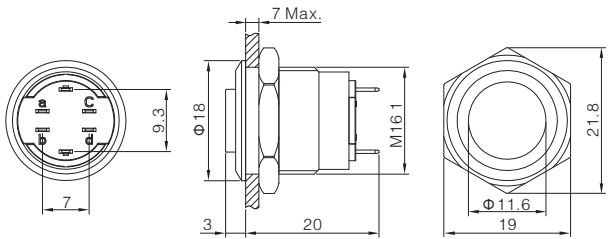
Ring-illuminated
ONPOW6316F-10 ■/E/J/△/▲/S/※

Contact structure 1NO
Operation type ■ Z: Latching / No letter means momentary
LED color △ R G Y B W
LED voltage ▲ 6V / 12V~24V
Shell material Stainless steel
Tail configuration Terminal pins(2*0.5mm)
IP degree※ No letter means IP65 / FP: IP67
Applicable accessory M12-16F



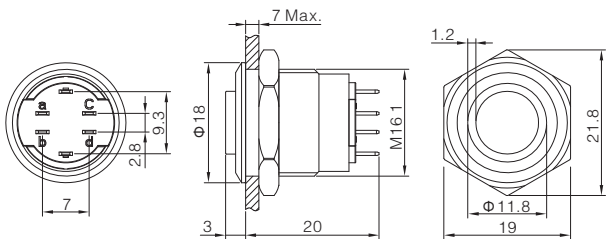
High Round
ONPOW6316H-10 ■/J/S/※

Contact structure 1NO
Operation type ■ Z: Latching / No letter means momentary
Shell material Stainless steel
Tail configuration Terminal pins(2*0.5mm)
IP degree※ No letter means IP65 / FP: IP67
Applicable accessory M12-16H



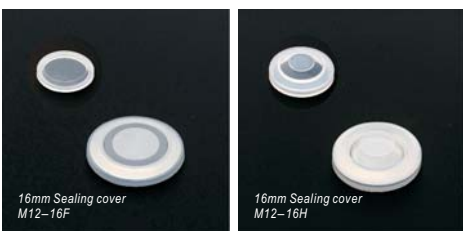
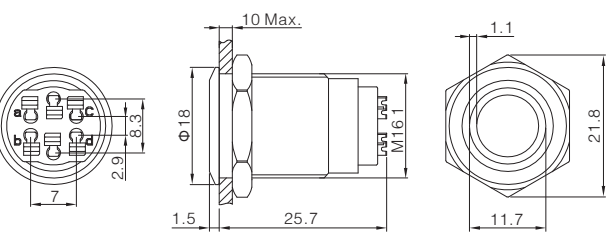
High Head Ring-illuminated
ONPOW6316H-10 ■/E/J/△/▲/S/※

Contact structure 1NO
Operation type ■ Z: Latching / No letter means momentary
LED color △ R G Y B W
LED voltage ▲ 6V / 12V~24V
Shell material Stainless steel
Tail configuration Terminal pins(2*0.5mm)
IP degree※ No letter means IP65 / FP: IP67
Applicable accessory M12-16H



Ring-illuminated
ONPOW6316F-10 ■/J/S/※

Contact structure 1NO
Operation type ■ Z: Latching / No letter means momentary
LED color △ R G Y B W
LED voltage ▲ 6V / 12V~24V
Shell material Stainless steel
Tail configuration Quick-connect type socket
IP degree※ No letter means IP65 / FP: IP67
Applicable accessory M12-16F

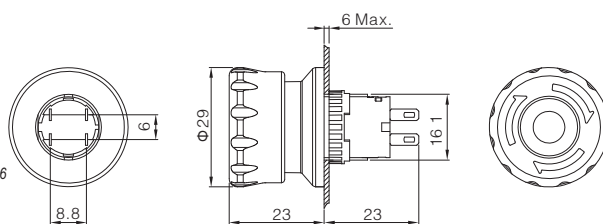


16mm Sealing cover
M12-16F

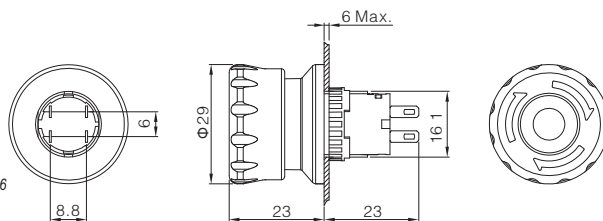
16mm Sealing cover
M12-16H



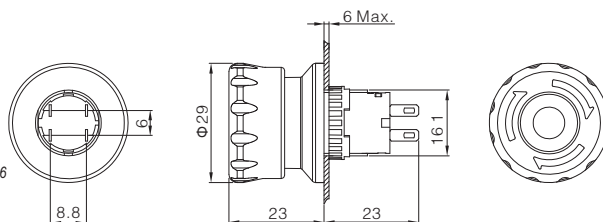
Contact structure 1NC/2NC/1NO1NC
 Shell material PA
 Tail configuration Terminal pins(2*0.5mm)
 IP degree※ No letter means IP65
 Applicable accessory Warning Ring S10-1650/Protective cover T34-16



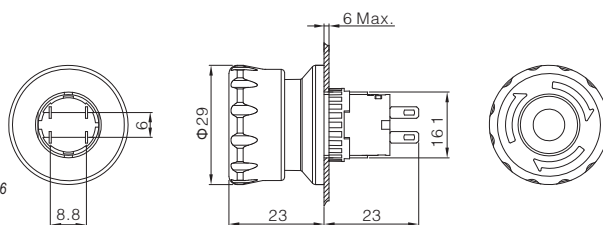
contact structure 1NC
 LED color △ R G Y B W
 Shell material PA
 Tail configuration Terminal pins(2*0.5mm)
 IP degree※ No letter means IP65
 Applicable accessory Warning Ring S10-1650/Protective cover T34-16



Contact structure 1NC/2NC/1NO1NC
 Shell material PA
 Tail configuration Terminal pins(2*0.5mm)
 IP degree※ No letter means IP65
 Applicable accessory Warning Ring S10-1650/Protective cover T34-16

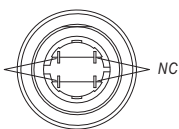


Contact structure 1NC
 LED color △ R G Y B W
 Shell material PA
 Tail configuration Terminal pins(2*0.5mm)
 IP degree※ No letter means IP65
 Applicable accessory Warning Ring S10-1650/Protective cover T34-16



Emergency Stop Pin Description

NC NO LED choose one of three



Emergency stop button defaults to a set of NC switches,
 the other two pins can be selected NC, NO, LED,
 Due to structural reasons, it is not recommended to leave it blank

