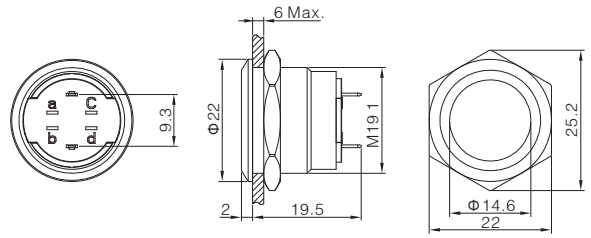




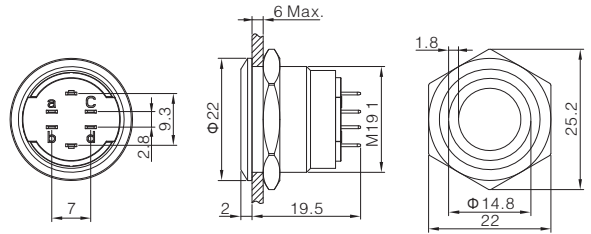
Flat Round
ONPOW6319F-10 ■/J/S/※

Contact structure 1NO
Operation type ■ Z: Latching / No letter means momentary
Shell material Stainless steel
Tail configuration Terminal pins(2*0.5mm)
IP degree ※ No letter means IP65 / FP: IP67
Applicable accessory M12-19F



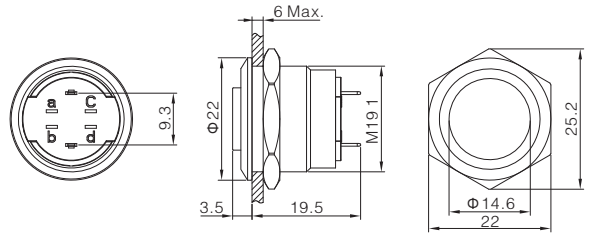
Ring-illuminated
ONPOW6319F-10 ■/E/J/△/▲/S/※

Contact structure 1NO
Operation type ■ Z: Latching / No letter means momentary
LED color △ R G Y B W
LED voltage ▲ 6V / 12V-24V
Shell material Stainless steel
Tail configuration Terminal pins(2*0.5mm)
IP degree ※ No letter means IP65 / FP: IP67
Applicable accessory M12-19F



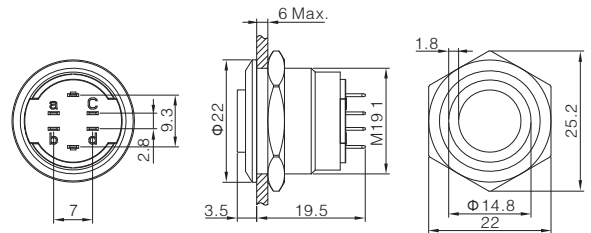
High Round
ONPOW6319H-10 ■/J/S/※

Contact structure 1NO
Operation type ■ Z: Latching / No letter means momentary
Shell material Stainless steel
Tail configuration Terminal pins(2*0.5mm)
IP degree ※ No letter means IP65 / FP: IP67
Applicable accessory M12-19H



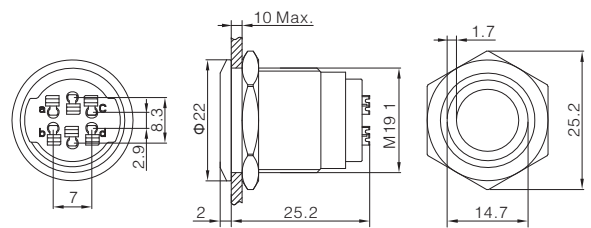
High Head Ring-illuminated
ONPOW6319H-10 ■/E/J/△/▲/S/※

Contact structure 1NO
Operation type ■ Z: Latching / No letter means momentary
LED color △ R G Y B W
LED voltage ▲ 6V / 12V-24V
Shell material Stainless steel
Tail configuration Terminal pins(2*0.5mm)
IP degree ※ No letter means IP65 / FP: IP67
Applicable accessory M12-19H



Ring-illuminated
ONPOW6319F-10 ■/E/J/△/▲/S/※

Contact structure 1NO
Operation type ■ Z: Latching / No letter means momentary
LED color △ R G Y B W
LED voltage ▲ 6V / 12V-24V
Shell material Stainless steel
Tail configuration Quick-connect type socket
IP degree ※ No letter means IP65 / FP: IP67
Applicable accessory M12-19F

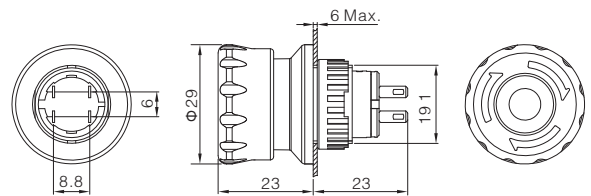


19mm Sealing cover
M12-19F

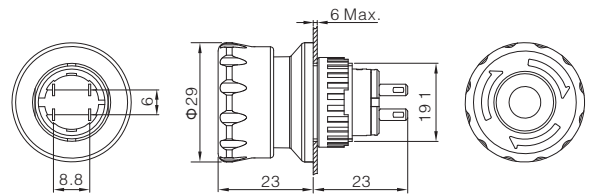
19mm Sealing cover
M12-19H



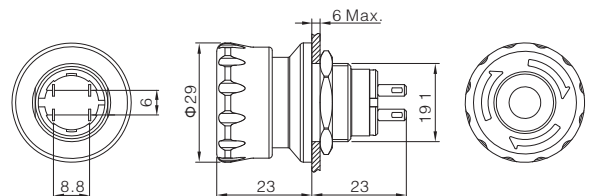
Contact structure 1NC/2NC/1NO1NC
 Shell material PA
 Tail configuration Terminal pins(2*0.5mm)
 IP degree※ No letter means IP65
 Applicable accessory Warning Ring S10-1950/Protective cover T34-19



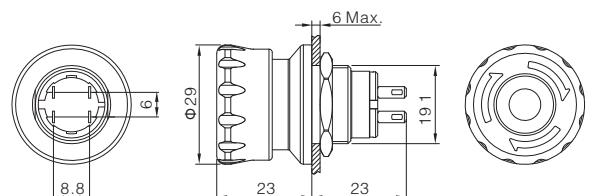
Contact structure 1NC
 LED color Δ R G Y B W
 Shell material PA
 Tail configuration Terminal pins(2*0.5mm)
 IP degree※ No letter means IP65
 Applicable accessory Warning Ring S10-1950/Protective cover T34-19



Contact structure 1NC/2NC/1NO1NC
 Shell material PA
 Tail configuration Terminal pins(2*0.5mm)
 IP degree※ No letter means IP65
 Applicable accessory Warning Ring S10-1950/Protective cover T34-19



Contact structure 1NC
 LED color Δ R G Y B W
 Shell material PA
 Tail configuration Terminal pins(2*0.5mm)
 IP degree※ No letter means IP65
 Applicable accessory Warning Ring S10-1950/Protective cover T34-19



Emergency Stop Pin Description



Emergency stop button defaults to a set of NC switches,
 the other two pins can be selected NC, NO, LED,
 Due to structural reasons, it is not recommended to leave it blank

