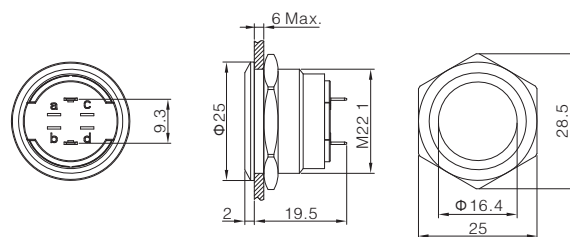




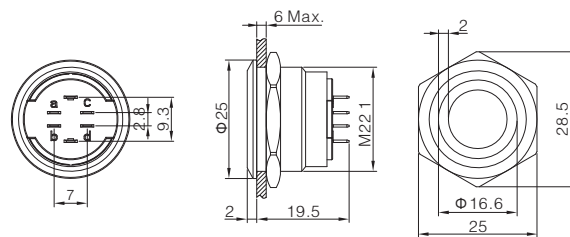
Flat Round
ONPOW6322F-10

Contact structure 1NO
Operation type ■ Z: Latching / No letter means momentary
Shell material Stainless steel
Tail configuration Terminal pins(2*0.5mm)
IP degree※ No letter means IP65 / FP: IP67
Applicable accessory M12-22F



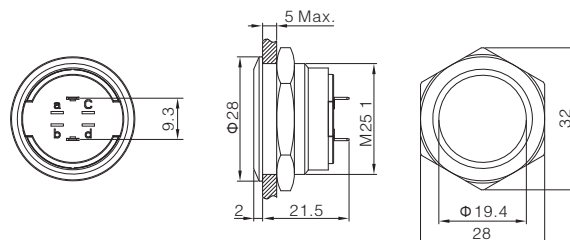
Ring-illuminated
ONPOW6322F-10

Contact structure 1NO
Operation type ■ Z: Latching / No letter means momentary
LED color △ R G Y B W
LED voltage ▲ 6V / 12V-24V
Shell material Stainless steel
Tail configuration Terminal pins(2*0.5mm)
IP degree※ No letter means IP65 / FP: IP67
Applicable accessory M12-22F



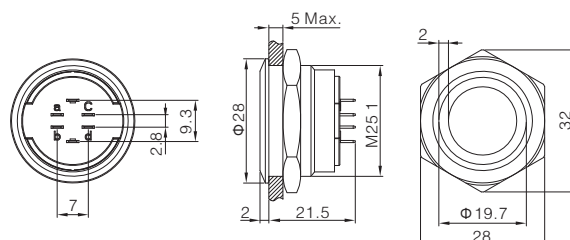
Flat Round
ONPOW6325F-10

Contact structure 1NO
Operation type ■ Z: Latching / No letter means momentary
Shell material Stainless steel
Tail configuration Terminal pins(2*0.5mm)
IP degree※ No letter means IP65 / FP: IP67
Applicable accessory M12-25F



Ring-illuminated
ONPOW6325F-10

Contact structure 1NO
Operation type ■ Z: Latching / No letter means momentary
LED color △ R G Y B W
LED voltage ▲ 6V / 12V-24V
Shell material Stainless steel
Tail configuration Terminal pins(2*0.5mm)
IP degree※ No letter means IP65 / FP: IP67
Applicable accessory M12-25F



22mm Sealing cover
M12-22F



22mm Sealing cover
M12-22H



25mm Sealing cover
M12-25F

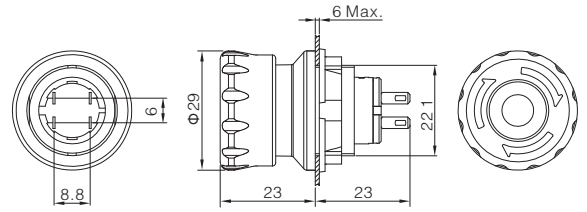


25mm Sealing cover
M12-25H



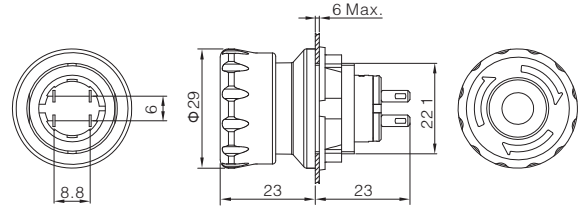
Emergency stop (plastic shell)
ONPOW6322-□TS/J/PA/※

Contact structure 1NC/2NC/1NO1NC
Shell material PA
Tail configuration Terminal pins(2*0.5mm)
IP degree※ No letter means IP65
Applicable accessory Warning Ring S10-2250/Protective cover T16



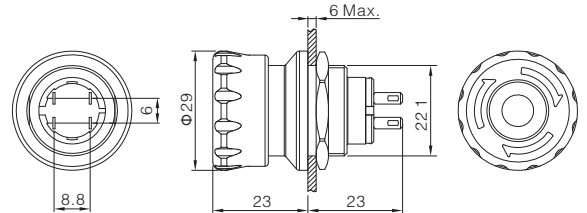
Emergency stop (plastic shell)
ONPOW6322-01TS/J/PA/※

Contact structure 1NC
LED color △ R G Y B W
Shell material PA
Tail configuration Terminal pins(2*0.5mm)
IP degree※ No letter means IP65
Applicable accessory Warning Ring S10-2250/Protective cover T16



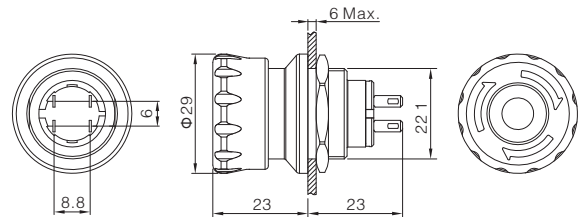
Emergency stop (Aluminium alloy shell)
ONPOW6322-□TS/J/※

Contact structure 1NC/2NC/1NO1NC
Shell material PA
Tail configuration Terminal pins(2*0.5mm)
IP degree※ No letter means IP65
Applicable accessory Warning Ring S10-2250/Protective cover T16

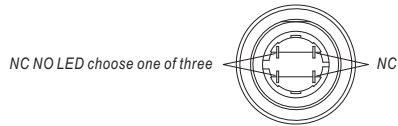


Emergency stop (Aluminium alloy shell)
ONPOW6322-01TS/J/※

Contact structure 1NC
LED color △ R G Y B W
Shell material PA
Tail configuration Terminal pins(2*0.5mm)
IP degree※ No letter means IP65
Applicable accessory Warning Ring S10-2250/Protective cover T16



Emergency Stop Pin Description



NC NO LED choose one of three

Emergency stop button defaults to a set of NC switches,
the other two pins can be selected NC, NO, LED,
Due to structural reasons, it is not recommended to leave it blank



Warning Ring
S10-2250

Protective cover
T16