



Feature

- ★ Pressure-activated switch
- ★ 50 million life cycles
- ★ Mounting hole 12 16 19 22mm
- ★ Operation type: Momentary or latching
- ★ Waterproof level IP68, IP69K
- ★ It works in many harsh environments.

Performance Characteristic

Max .current /voltage rating :200mA 24VAC DC
 Switch resistance ON :10 max .
 Switch resistance OFF :5M min .
 Operating force :5 to 10N
 Operating life :50 million cycles
 LED consumption :Illuminated dot :10mA Illuminated ring :20mA
 Protecting level IP68 IP69K ,IK06 (stainless steel)
 Vibration resistance: 10-500Hz / 10g
 Operating temperature: -40 to + 75 (Instantaneous temperature difference not exceeding 20°C)
 Terminal type :26AWG Length 300mm ,twisted by pair

PS Part-number Description

PS ☆ ★ □ ■ ◆ ◇ △ ▲

Symbol	Symbol name	Specify
	Mounting hole	12: Φ12mm / 16: Φ16mm / 19: Φ19mm / 22: Φ22mm
	Operator	1P: Flat operator. height 1.0 (non illuminated) / 3P: Flat operator. height 3.0 / 3Z: Flat operator. height 3.0 / 5P: Flat operator height 4.5 / 5Z: With finger location, height 4.5 (non illuminated)
	Electrical function	10: NO(pulse) / 01: NC(pulse) / 10Z: NO(latching) / T30: 30 seconds delay (requires external power supply)
	Terminal type	Y: wire leading (length 30cm) Other wire length can be customized
◆	Color / Material	NT: Natural anodized / BU: Blue anodized / BK: Black anodized / GD: Gold anodized / GN: Green anodized / RD: Red anodized / SS: Stainless steel
◇	Switch rating	1: 200mA 24VAC/DC
	LED color	No letter means non illuminated / Momentary type with LED: R Red G Green Y Yellow B Blue W White / latching type with LED: NR Non-illum. / Red, NG Non-illum. / Green, NB Non-illum. / blue, Other LED color can be customized.
	LED voltage and type	No letter means non illuminated / 05T: Thin ring-5VDC / 12T: thin ring-12VDC / 24T: Thin ring-24VDC. 05L: large ring-5VDC/12T: large ring-12VDC/24T: large ring-24VDC. 05D: Dot illum.-5VDC /12D: Dot illum.-12VDC/24D: Dot illum.-24VDC

Note: please carefully read the specific description of the product and select the corresponding code in the table according to different symbols.



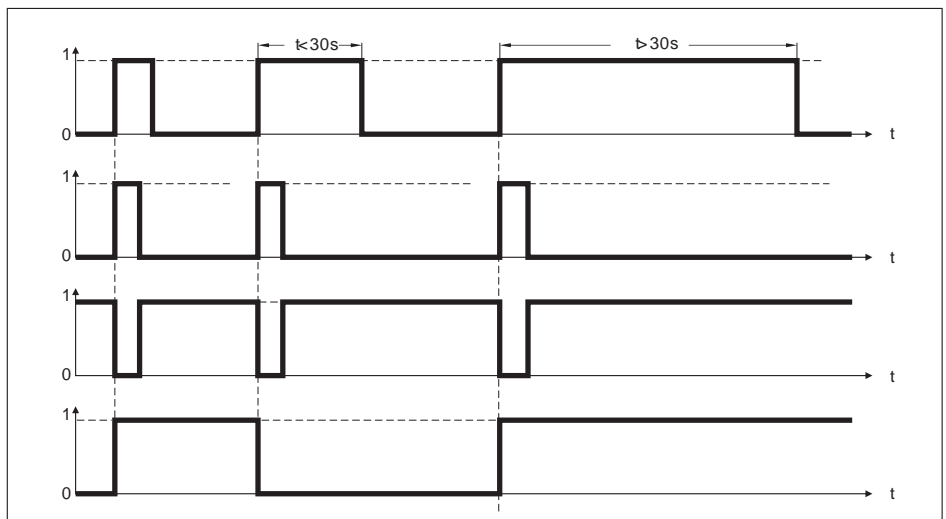
Operating status description

Finger pressure applied to switch

1 = pressure
0 = no pressure

Output

- Momentary NO (pulse)
No external power supply required
- Momentary NC (pulse)
No external power supply required
- Latching (ON-OFF)
Requires external power supply



Wiring diagram

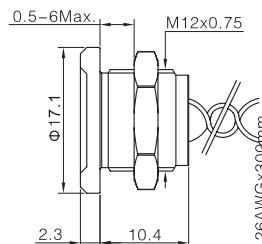
	Non -illuminated	1 ED *	2 LEDs	3 LEDs
Momentary NO (pulse)				
Momentary NO (pulse)				
Latching (ON-OFF)				

NOTE :X means the color of the wire depends on the color of the LED.

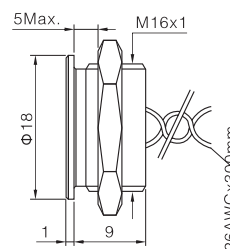
Φ 12、16mm Picture Specifications Dimensions



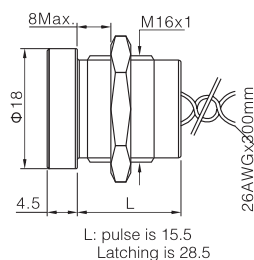
Electrical function 1NO (pulse)
 Housing color SS: Stainless steel
 Rating current 200mA
 Housing material Stainless steel
 Protection level IP68, IP69K



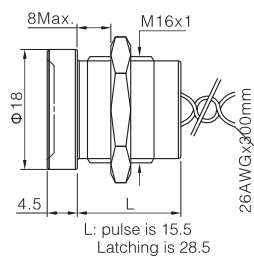
Electrical function 1NO (pulse)/ 01 NC (pulse)
 Housing color NT Natural anodized / BU Blue anodized / BK Black anodized /
 GD Gold anodized / GN Green anodized / RD Red anodized /
 SS Stainless steel
 Voltage 24VAC/DC
 Rating current 200mA
 Housing material Aluminum/Stainless steel
 Protection level IP68, IP69K



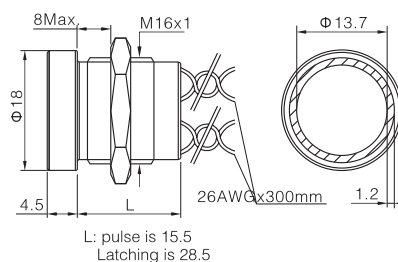
Electrical function 1NO (pulse) / 01 NC (pulse) / 10Z: NO latching
 Housing color NT Natural anodized / BU Blue anodized / BK Black anodized /
 GD Gold anodized / GN Green anodized / RD Red anodized /
 SS Stainless steel
 Voltage 24VAC/DC
 Rating current 200mA
 Housing material Aluminum / Stainless steel
 Protection level IP68, IP69K



Electrical function 1NO (pulse) / 01 NC (pulse) / 10Z: NO latching
 Housing color NT Natural anodized / BU Blue anodized / BK Black anodized /
 GD Gold anodized / GN Green anodized / RD Red anodized /
 SS Stainless steel
 Voltage 24VAC/DC
 Rating current 200mA
 Housing material Aluminum / Stainless steel
 Protection level IP68, IP69K



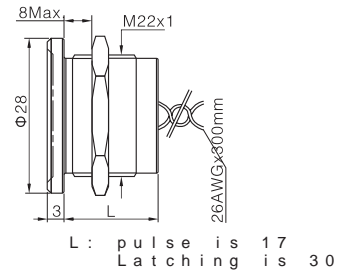
Electrical function 1NO (pulse)/ 01 NC (pulse)/10Z: NO latching
 Housing color NT Natural anodized / BU Blue anodized / BK Black anodized /
 GD Gold anodized / GN Green anodized / RD Red anodized /
 SS Stainless steel
 LED color R G Y B W
 Voltage 5V, 12V, 24V
 Rating current 200mA
 Housing material Aluminum / Stainless steel
 Protection level IP68



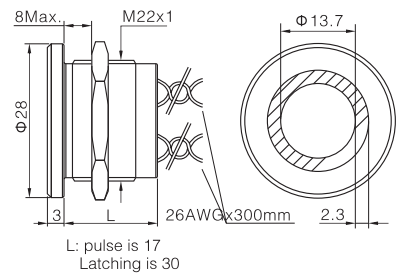
Φ 22mm Picture Specifications Dimensions



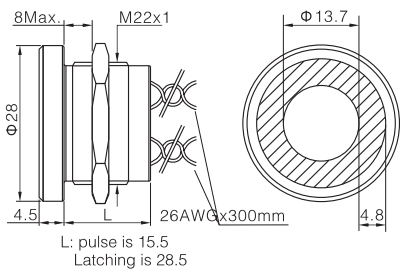
Electrical function □ 1NO (pulse) / 01 NC (pulse) / 10Z: NO latching
 Housing color ◆ NT Natural anodized / BU Blue anodized / BK Black anodized / GD Gold anodized / GN Green anodized / RD Red anodized / SS Stainless steel
 Voltage 24VAC/DC
 Rating current 200mA
 Housing material Aluminum / Stainless steel
 Protection level IP68, IP69K



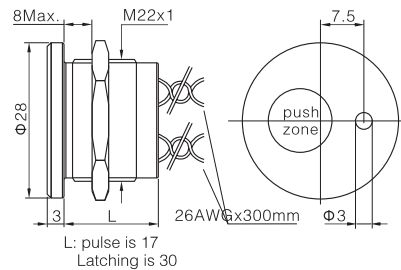
Electrical function □ 1NO (pulse)/ 01 NC (pulse)/10Z: NO latching
 Housing color NT Natural anodized / BU Blue anodized / BK Black anodized / GD Gold anodized / GN Green anodized / RD Red anodized / SS Stainless steel
 LED color R G Y B W
 Voltage 5V, 12V, 24V
 Rating current 200mA
 Housing material Aluminum / Stainless steel
 Protection level IP68



Electrical function □ 1NO (pulse)/ 01 NC (pulse)/10Z: NO latching
 Housing color NT Natural anodized / BU Blue anodized / BK Black anodized / GD Gold anodized / GN Green anodized / RD Red anodized / SS Stainless steel
 LED color R G Y B W
 Voltage 5V, 12V, 24V
 Rating current 200mA
 Housing material Aluminum / Stainless steel
 Protection level IP68



Electrical function □ 1NO (pulse)/ 01 NC (pulse)/10Z: NO latching
 Housing color NT Natural anodized / BU Blue anodized / BK Black anodized / GD Gold anodized / GN Green anodized / RD Red anodized / SS Stainless steel
 LED color R G Y B W
 Voltage 5V, 12V, 24V
 Rating current 200mA
 Housing material Aluminum
 Protection level IP68



Electrical function □ 1NO (pulse)/ 01 NC (pulse)/10Z: NO latching
 Housing color NT Natural anodized / BU Blue anodized / BK Black anodized / GD Gold anodized / GN Green anodized / RD Red anodized / SS Stainless steel
 LED color R G Y B W
 Voltage 5V, 12V, 24V
 Rating current 200mA
 Housing material Aluminum
 Protection level IP68

