

FEATURES

- ※Single In-line Packaging saves PCB space
- ※Available in vertical or right angle models

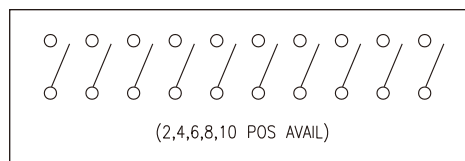
APPLICATION

- ※Industrial control
- ※Computers and peripherals
- ※Variety of function controls

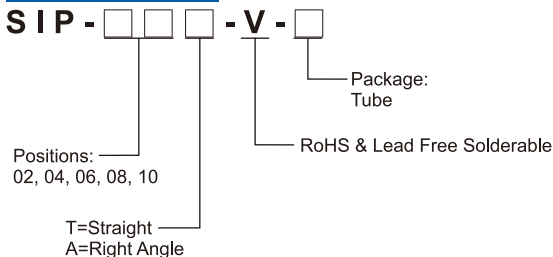
SPECIFICATION

Contact Rating	10mA, 5V DC
Contact Resistance	100mΩ max.
Insulation Resistance	100MΩ min. 500V DC
Dielectric Strength	300V AC/1 minute
Operating Force	800gf max.
Operating Life	500 cycles
Operating Temp.	-30°C ~ +80°C
Storage Temp.	-30°C ~ +80°C

CIRCUIT



HOW TO ORDER

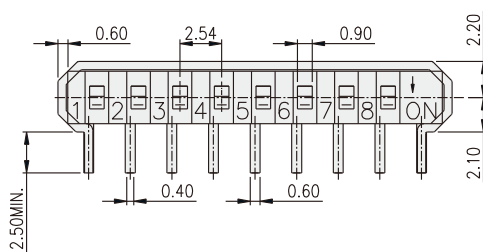


PACKAGE

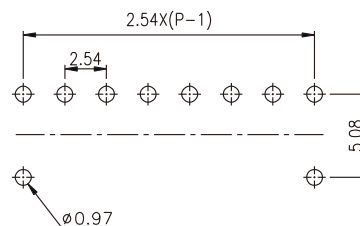
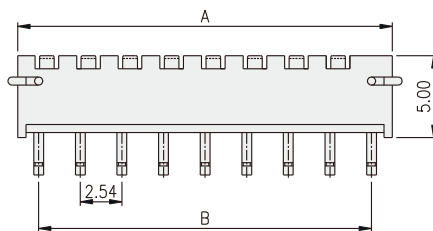
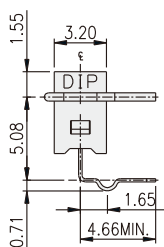
<Tube>

SIP-02A: 56 pcs	SIP-02T: 61 pcs
SIP-04A: 35 pcs	SIP-04T: 37 pcs
SIP-06A: 25 pcs	SIP-06T: 26 pcs
SIP-08A: 20 pcs	SIP-08T: 20 pcs
SIP-10A: 16 pcs	SIP-10T: 17 pcs

SIP-A



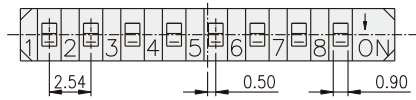
PART NO.	NO.OF POS.	DIM.A	DIM.B
SIP-02	2	7.62	5.08
SIP-04	4	12.70	10.16
SIP-06	6	17.78	15.24
SIP-08	8	22.86	20.32
SIP-10	10	27.94	25.40



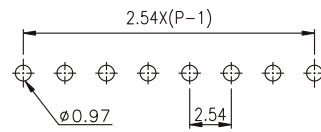
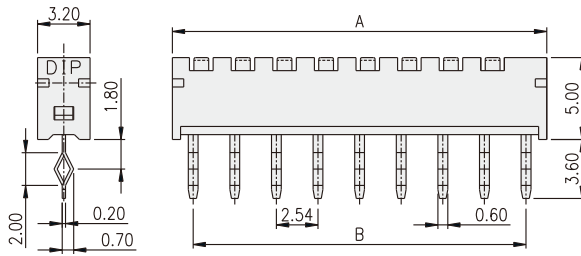
P.C.B. LAYOUT

DIP SWITCH

SIP-T



PART NO.	NO.OF POS.	DIM.A	DIM.B
SIP-02	2	7.62	5.08
SIP-04	4	12.70	10.16
SIP-06	6	17.78	15.24
SIP-08	8	22.86	20.32
SIP-10	10	27.94	25.40



P.C.B. LAYOUT

DIP SWITCH