

FEATURES

- ※ Compact-size 2.6*1.6mm
- ※ Low profile with 0.55mm
- ※ 200,000 operating cycles

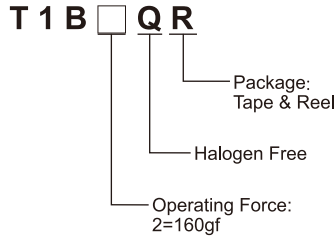
APPLICATION

- ※ Smart phone
- ※ Digital camera, Medical
- ※ Portable electronic device
- ※ 3C products

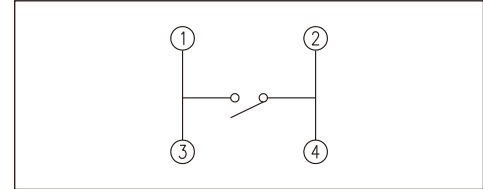
SPECIFICATION

Contact Rating	10uA, 2V DC to 20mA, 15V DC
Contact Resistance	500mΩ max.
Insulation Resistance	50MΩ min. 100V DC
Dielectric Strength	250V AC/1 minute
Operating Force	160±50gf
Travel	0.11mm
Operating Life	200,000 cycles
Operating Temp.	-40°C ~ +85°C
Storage Temp.	-40°C ~ +85°C

HOW TO ORDER



CIRCUIT

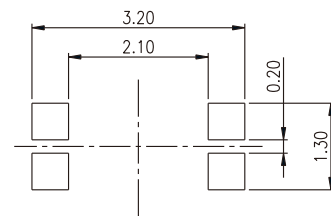
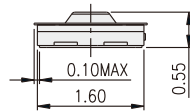
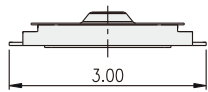
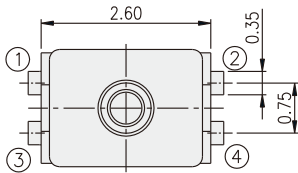


PACKAGE

<Tape & Reel>
8000 pcs

TACT SWITCH

T1B



P.C.B. LAYOUT