

**FEATURES**

- ※Electrical life: 100,000 cycles
- ※3.2x4.0mm miniature tact switch

**APPLICATION**

- ※Control panel
- ※Remote controls
- ※Keyless entry devices

**SPECIFICATION**

Contact Rating	10μA, 1V DC to 50mA, 16V DC
Contact Resistance	500mΩ max.
Insulation Resistance	100MΩ min. 100V DC
Dielectric Strength	250V AC/1 minute
Operating Force	160±50gf/260±80gf/400±100gf
Travel	0.12mm
Operating Life	100,000 cycles
Operating Temp.	-30°C ~ +85°C
Storage Temp.	-30°C ~ +85°C

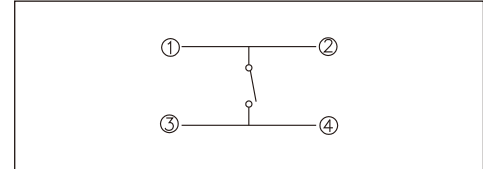
**HOW TO ORDER**

TAH □ QR

Operating Force:  
1=160gf (Brown)  
2=260gf (White)  
3=400gf (Black)

Package:  
Tape & Reel  
Halogen Free

**CIRCUIT**

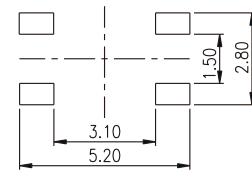
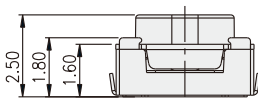
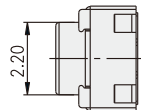
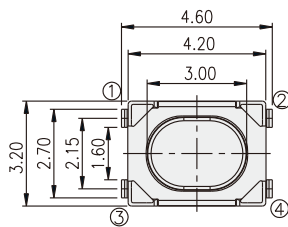


**PACKAGE**

<Tape & Reel>  
3000 pcs

TACT SWITCH

**TAH**



P.C.B. LAYOUT