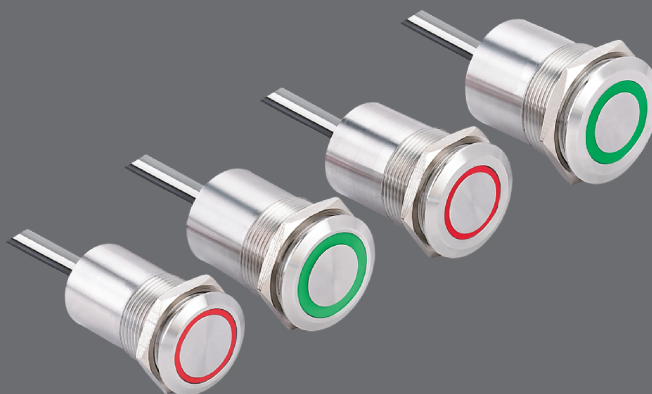


**Features**

- ★ Finger touch trigger (can be triggered even wearing medical rubber glove)
- ★ Can be triggered by flowing water
- ★ Electrical endurance: 5 million cycles
- ★ Mounting hole size: 16, 19, 22, 25mm
- ★ With momentary, latching or delay function
- ★ IP degree: IP67, IP69K



**TS Part Number Description**

TS ☆ ★ □ ■ ◆ ◇ ▲ ▲

Symbol	Symbol name	Specify
	Mounting hole	16: Φ16mm / 19: Φ19mm / 22: Φ22mm / 25: Φ25mm
	Operator	H: High thin ring / A: Standard thin ring / D: Standard large ring / B: Finger location thin ring / C: Super flat Thin ring / E: Finger location Large ring / F: Super flat Large ring
	Electrical function	10: NO Momentary (High level output type) / 10B: NO Momentary (Low level output type) / 01: NC Momentary (High level output type) / 01B: NC Momentary (Low level output type) / 10Z: NO Latching (High level output type) / 10ZB: NO Latching (Low level output type) / 01Z: NC Latching (High level output type) / 01ZB: NC Latching (Low level output type) / 10T30: NO type, no matter how long you press it, prolonged 30s / 01T30: NC type, no matter how long you press it, prolonged 30s / 10C30: NO type, prolonged no more than 30s, the close time according to how long you push it. / 01C30: NC type, prolonged no more than 30s, the close time according to how long you push it.
	Wiring type	Y: wire leading (length 30cm), the length of the lead can be made to order.
◆	Housing material	SS: Stainless steel
	LED color	Blank: Non-illum. 1 LED single light: NR Non-illum./red NG Non-illum./green NO Non-illum./orange NB Non-illum./blue NW Non-illum./white RN red/Non-illum GN green/Non-illum. ON orange/Non-illum. BN blue/Non-illum. WN white/Non-illum. 2 LED bi-color light :RG red/green RB red/blue BG blue/green WO white/orange GR green/red BR blue/red GB green/blue OW orange/white
	LED Voltage	Blank Non-illum. / 5VDC / 12VDC / 24VDC

**Specification**

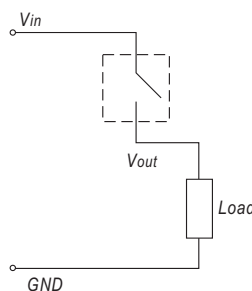
Max. current/voltage rating: 500mA/24VDC  
 Operating voltage: 5VDC 12VDC 24VDC  
 Electrical endurance: 50 million cycles  
 Insulation Resistance: 600VDC 10MΩ  
 Operating temperature: -25-55  
 Protection level: IP67, IP69K, IK06(Stainless steel)  
 Terminal type: 22AWG, flat cable, cable length is about 30cm.

LED color: **R G Y B W**  
 LED Life: 40000 hours (Reference)  
 Dropping Way: Internal Resistor

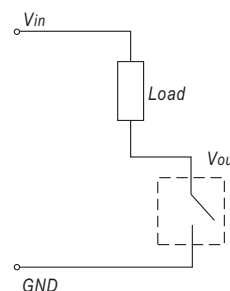
LED status:  
 1 LED: LED lights when the output circuit closes.  
 2 LED: When the output circuit open, first LED color lights Second LED lights when the output circuit closes.

**Wiring instructions**

Wiring diagram of switch high level output:



Wiring diagram of switch low level output:



Note: high level output is used to control positive (positive voltage);  
 The low level output is used to control the negative (negative voltage)

Φ 22mm Picture

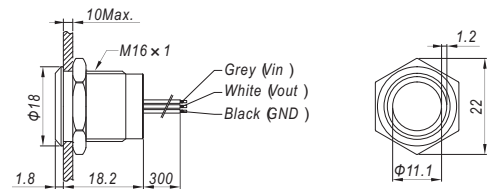
Specifications

Dimensions



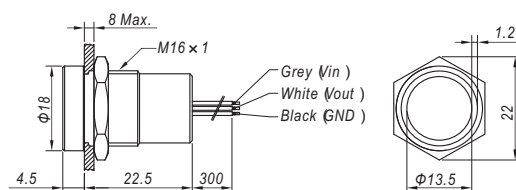
TS16A □ YSS ▲ ▲

Mounting hole Φ16mm  
 Switch Rating 500mA / 24VDC  
 Illuminated type Ring illumination  
 Housing Material Stainless steel  
 Wire specification UL1430 22AWG  
 IP Degree IP67



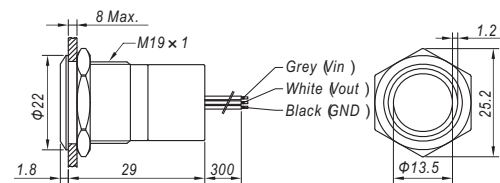
TS16H □ YSS ▲ ▲

Mounting hole Φ16mm  
 Switch Rating 500mA / 24VDC  
 Illuminated type Ring illumination  
 Housing Material Stainless steel  
 Wire specification UL1430 22AWG  
 IP Degree IP67



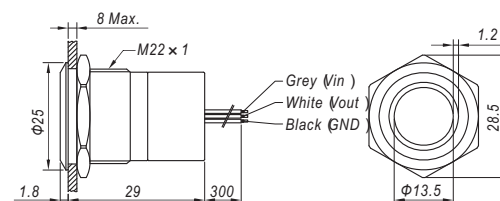
TS19A □ YSS ▲ ▲

Mounting hole Φ19mm  
 Switch Rating 500mA / 24VDC  
 Illuminated type Ring illumination  
 Housing Material Stainless steel  
 Wire specification UL1430 22AWG  
 IP Degree IP67



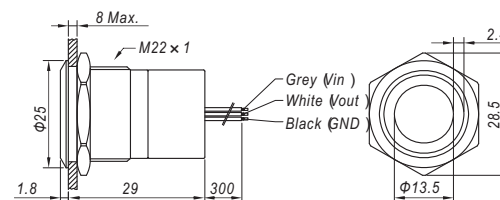
TS22A □ YSS ▲ ▲

Mounting hole Φ22mm  
 Switch Rating 500mA / 24VDC  
 Illuminated type Ring illumination  
 Housing Material Stainless steel  
 Wire specification UL1430 22AWG  
 IP Degree IP67



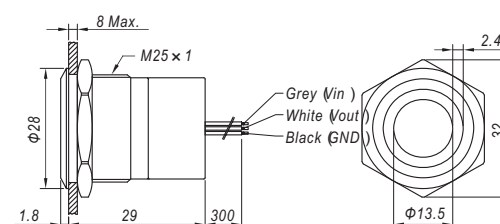
TS22D □ YSS ▲ ▲

Mounting hole Φ22mm  
 Switch Rating 500mA / 24VDC  
 Illuminated type Ring illumination  
 Housing Material Stainless steel  
 Wire specification UL1430 22AWG  
 IP Degree IP67



TS25D □ YSS ▲ ▲

Mounting hole Φ25mm  
 Switch Rating 500mA / 24VDC  
 Illuminated type Ring illumination  
 Housing Material Stainless steel  
 Wire specification UL1430 22AWG  
 IP Degree IP67



Wiring diagram

Switch Functions	Non-Illuminated	1 LED		2 LED
<p>OFF - QN ) 10 NO-MOM High level output type )</p>				
<p>OFF - QN ) 10B NO-MOM Low (level output type )</p>				
<p>ON - QFF ) 01 NC-MOM High level output type )</p>				
<p>ON - QFF ) 01B NC-MOM Low (level output type )</p>				
<p>OFF - QN ) 10Z NO-Latching High level output type )</p>				
<p>OFF - QN ) 10ZB NO-Latching Low (level output type )</p>				
<p>ON - QFF ) 01Z NC-Latching High level output type )</p>				
<p>ON - QFF ) 01ZB NC-Latching Low (level output type )</p>				

**Wiring diagram**

Switch Functions	Non-Illuminated	1 LED		2 LED
<p>OFF - QN )</p> <p>10C30</p> <p>NO type, prolonged no more than 30s, the close time according to how long you push it.</p>				
<p>ON - QFF )</p> <p>01C30</p> <p>NC type, prolonged no more than 30s, the close time according to how long you push it.</p>				
<p>OFF - QN )</p> <p>10T30</p> <p>NO type, no matter how long you press it, prolonged 30s</p>				
<p>ON - QFF )</p> <p>01T30</p> <p>NC type, no matter how long you press it, prolonged 30s</p>				

**Custom pattern**

The following is part of the pattern number query if you need special patterns can be customized according to customer needs

31	32	33	34	35
36	37	38	39	40
41	42	43	44	45
46	47	48	49	50

**Custom head**

The following is part of the custom head for the choice of special head or appearance can be customized according to customer needs

