

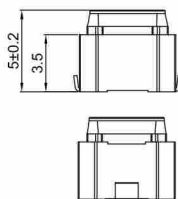
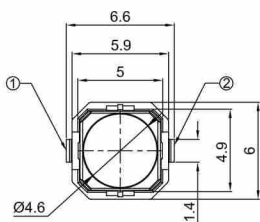


## SPECIFICATIONS

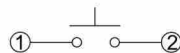
Circuit	: SPST
Current Rating	: 50mA/μA10
Voltage Rating	: 16V DC/1V DC
Dielectric withstanding voltage	: 250VAC for 1 minute
Contact Resistance	: 100mΩ Max. (initial)
Insulation Resistance	: 100MΩ Min.
Operating Force	: 150±80gf
Full Travel	: 1.3±0.4mm
Life Test:	: 100,000 Cycles Min
Soldear Specifications	: 260°C for 5 Seconds
Opernating Temperature	: -40°C~+90°C



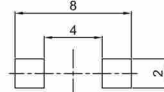
TS66-A-BB-1S



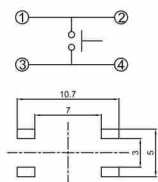
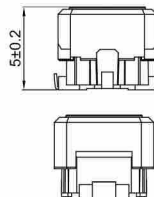
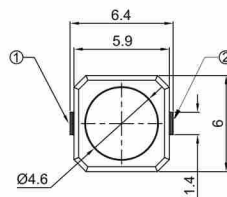
### CIRCUIT



### P.C.B. LAYOUT



TS66-B-BB-2S



TS66-A-BB-3P

