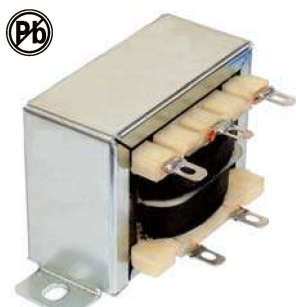


# CHASSIS-TRAN POWER TRANSFORMERS

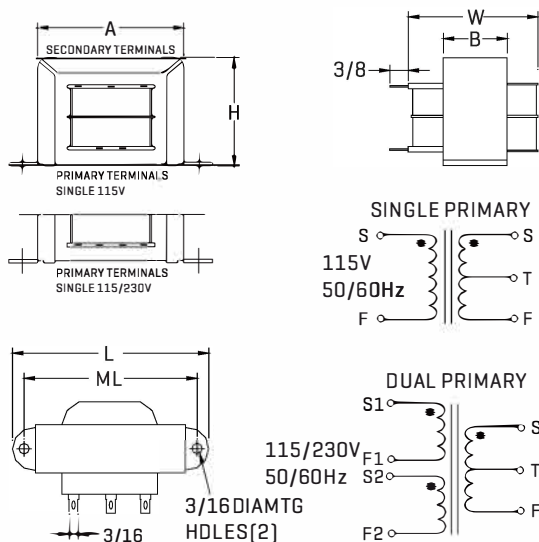


Quick connect or hard wiring ; high isolation.  
All parts meet RoHS compliance.

## FEATURES

- Channel frame mounting
- High [2500V] isolation ; 2500V RMS HIPOT
- No crossover between primary and secondary winding leads
- Vacuum impregnated
- Available in single or dual primary
- Center tapped secondary offers dual outputs

## PHYSICAL CHARACTERISTICS



Size	VA	L	W	H	A	B	ML	Wgt
3	2.4	52.3	26.9	30.0	41.1	14.2	44.4	113g
4	6	60.2	31.7	35.0	42.6	17.3	50.8	199g
5	12	71.4	34.8	41.1	49.0	20.6	60.2	317g
6	30	82.5	42.6	49.0	58.6	26.9	71.3	498g
7	56	93.5	45.9	57.1	68.0	26.9	79.2	771g
8	100	102	57.1	65.0	77.7	33.3	88.9	1247g

ALL DIMENSIONS IN MM

## ELECTRICAL CHARACTERISTICS AT 25°C

Part Number	Secondary RMS Rating	
	Single 115V	Dual 115/230V
FACT-3-10	not available	10V C.T. @ 0.25A
FACT-4-10	FADCT-4-10	10V C.T. @ 0.6A
FACT-5-10	FADCT-5-10	10V C.T. @ 1.2A
FACT-6-10	FADCT-6-10	10V C.T. @ 3.0A
FACT-7-10	FADCT-7-10	10V C.T. @ 5.0A
FACT-8-10	FADCT-8-10	10V C.T. @ 10A
FACT-3-12	not available	12.6V C.T. @ 0.2A
FACT-4-12	FADCT-4-12	12.6V C.T. @ 0.5A
FACT-5-12	FADCT-5-12	12.6V C.T. @ 1.0A
FACT-6-12	FADCT-6-12	12.6V C.T. @ 2.5A
FACT-7-12	FADCT-7-12	12.6V C.T. @ 4.0A
FACT-8-12	DCT-8-12	12.6V C.T. @ 8.0A
FACT-3-16	not available	16V C.T. @ 0.15A
FACT-4-16	FADCT-4-16	16V C.T. @ 0.4A
FACT-5-16	FADCT-5-16	16V C.T. @ 0.8A
FACT-6-16	FADCT-6-16	16V C.T. @ 2.0A
FACT-7-16	FADCT-7-16	16V C.T. @ 3.5A
FACT-8-16	DCT-8-16	16V C.T. @ 6.25A
FACT-3-20	not available	20V C.T. @ 0.12A
FACT-4-20	FADCT-4-20	20V C.T. @ 0.3A
FACT-5-20	FADCT-5-20	20V C.T. @ 0.6A
FACT-6-20	FADCT-6-20	20V C.T. @ 1.5A
FACT-7-20	FADCT-7-20	20V C.T. @ 2.8A
FACT-8-20	FADCT-8-20	20V C.T. @ 5.0A
FACT-3-24	not available	24V C.T. @ 0.1A
FACT-4-24	FADCT-4-24	24V C.T. @ 0.25A
FACT-5-24	FADCT-5-24	24V C.T. @ 0.5A
FACT-6-24	FADCT-6-24	24V C.T. @ 1.25A
FACT-7-24	FADCT-7-24	24V C.T. @ 2.4A
FACT-8-24	FADCT-8-24	24V C.T. @ 4.0A
FACT-3-28	not available	28V C.T. @ 0.085A
FACT-4-28	FADCT-4-28	28V C.T. @ 0.2A
FACT-5-28	FADCT-5-28	28V C.T. @ 0.42A
FACT-6-28	FADCT-6-28	28V C.T. @ 1.1A
FACT-7-28	FADCT-7-28	28V C.T. @ 2.0A
FACT-8-28	FADCT-8-28	28V C.T. @ 3.6A
FACT-3-36	not available	36V C.T. @ 0.065A
FACT-4-36	FADCT-4-36	36V C.T. @ 0.17A
FACT-5-36	FADCT-5-36	36V C.T. @ 0.35A
FACT-6-36	FADCT-6-36	36V C.T. @ 0.85A
FACT-7-36	FADCT-7-36	36V C.T. @ 1.5A
FACT-8-36	FADCT-8-36	36V C.T. @ 2.8A
FACT-3-48	not available	48V C.T. @ 0.05A
FACT-4-48	FADCT-4-48	48V C.T. @ 0.125A
FACT-5-48	FADCT-5-48	48V C.T. @ 0.25A
FACT-6-48	FADCT-6-48	48V C.T. @ 0.63A
FACT-7-48	FADCT-7-48	48V C.T. @ 1.2A
FACT-8-48	FADCT-8-48	48V C.T. @ 2.0A
FACT-3-56	not available	56V C.T. @ 0.045A
FACT-4-56	FADCT-4-56	56V C.T. @ 0.11A
FACT-5-56	FADCT-5-56	56V C.T. @ 0.22A
FACT-6-56	FADCT-6-56	56V C.T. @ 0.54A
FACT-7-56	FADCT-7-56	56V C.T. @ 1.0A
FACT-8-56	FADCT-8-56	56V C.T. @ 1.8A
FACT-3-120	not available	120V C.T. @ 0.02A
FACT-4-120	FADCT-4-120	120V C.T. @ 0.05A
FACT-5-120	FADCT-5-120	120V C.T. @ 0.1A
FACT-6-120	FADCT-6-120	120V C.T. @ 0.25A
FACT-7-120	FADCT-7-120	120V C.T. @ 0.5A
FACT-8-120	FADCT-8-120	120V C.T. @ 0.85A

# INTERNATIONAL HIGH POWER TRANSFORMERS

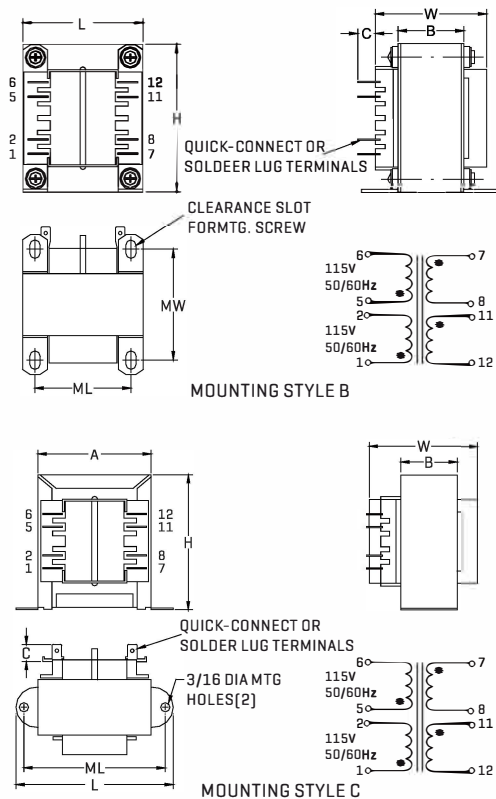


All parts meet RoHS compliance.

## FEATURES

- Power - 25VA to 175VA
- Chassis mounting
- Dual bobbin; double reinforced insulation
- High (4000V) isolation
- No crossover between primary and secondary winding leads
- Primaries : Dual primaries [115V/230V - 50/60Hz]
- Secondaries can be series or parallel connected

## PHYSICAL CHARACTERISTICS



## ELECTRICAL CHARACTERISTICS AT 25°C

Part Number	VA	Secondary RMS Rating	
		Series	Parallel
FAPA-25-10	25	10V C.T. @ 2.5A	5V @ 5.0A
FAPA-43-10	43	10V C.T. @ 4.3A	5V @ 8.6A
FAPA-80-10	80	10V C.T. @ 8.0A	5V @ 16.0A
FAPA-130-10	130	10V C.T. @ 13.0A	5V @ 26.0A
FAPA-175-10	175	10V C.T. @ 17.5A	5V @ 35.0A
FAPA-25-12	25	12.6V C.T. @ 2.0A	6.3V @ 4.0A
FAPA-43-12	43	12.6V C.T. @ 3.4A	6.3V @ 6.8A
FAPA-80-12	80	12.6V C.T. @ 6.3A	6.3V @ 12.6A
FAPA-130-12	130	12.6V C.T. @ 10.3A	6.3V @ 20.6A
FAPA-175-12	175	12.6V C.T. @ 14.0A	6.3V @ 28.0A
FAPA-25-16	25	16V C.T. @ 1.6A	8V @ 3.2A
FAPA-43-16	43	16V C.T. @ 2.7A	8V @ 5.4A
FAPA-80-16	80	16V C.T. @ 5.0A	8V @ 10.0A
FAPA-130-16	130	16V C.T. @ 8.1A	8V @ 16.2A
FAPA-175-16	175	16V C.T. @ 11.0A	8V @ 22.0A
FAPA-25-20	25	20V C.T. @ 1.25A	10V @ 2.5A
FAPA-43-20	43	20V C.T. @ 2.2A	10V @ 4.4A
FAPA-80-20	80	20V C.T. @ 4.0A	10V @ 8.0A
FAPA-130-20	130	20V C.T. @ 6.5A	10V @ 13.0A
FAPA-175-20	175	20V C.T. @ 8.8A	10V @ 17.6A
FAPA-25-24	25	24V C.T. @ 1A	12V @ 2A
FAPA-43-24	43	24V C.T. @ 1.8A	12V @ 3.6A
FAPA-80-24	80	24V C.T. @ 3.3A	12V @ 6.6A
FAPA-130-24	130	24V C.T. @ 5.4A	12V @ 10.8A
FAPA-175-24	175	24V C.T. @ 7.3A	12V @ 14.6A
FAPA-25-28	25	28V C.T. @ 0.9A	14V @ 1.86A
FAPA-43-28	43	28V C.T. @ 1.5A	14V @ 3.0A
FAPA-80-28	80	28V C.T. @ 2.8A	14V @ 5.6A
FAPA-130-28	130	28V C.T. @ 4.6A	14V @ 9.2A
FAPA-175-28	175	28V C.T. @ 6.25A	14V @ 12.5A
FAPA-25-36	25	36V C.T. @ 0.7A	18V @ 1.4A
FAPA-43-36	43	36V C.T. @ 1.2A	18V @ 2.4A
FAPA-80-36	80	36V C.T. @ 2.2A	18V @ 4.4A
FAPA-130-36	130	36V C.T. @ 3.6A	18V @ 7.2A
FAPA-175-36	175	36V C.T. @ 4.8A	18V @ 9.6A
FAPA-25-230	25	230V C.T. @ 0.11A	115V @ 0.22A
FAPA-43-230	43	230V C.T. @ 0.19A	115V @ 0.38A
FAPA-80-230	80	230V C.T. @ 0.35A	115V @ 0.7A
FAPA-130-230	130	230V C.T. @ 0.57A	115V @ 1.14A
FAPA-175-230	175	230V C.T. @ 0.76A	115V @ 1.52A

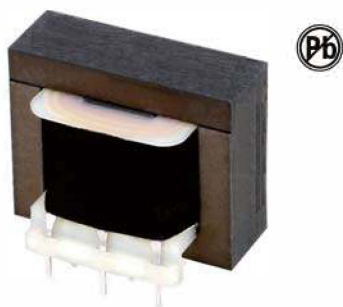
VA	Dimensions						Terminals C
	L	W	H	A	B	C	
25	71.4	47.5	58.7	50.8	28.4	7.9	4.7
43	79.2	52.3	68.1	57.2	28.4	7.9	4.7
80	63.5	60.2	76.2	---	34.8	7.9	4.7
130	71.4	72.9	85.6	---	41.1	9.4	6.4
175	79.2	72.9	95.3	---	41.1	9.4	6.4

VA	Mtg. Style	Mtg. Dim.		Mtg. Screw	Wgt
		ML	MW		
25	C	60.2	---	#6	566g
43	C	71.4	---	#6	724g
80	B	50.8	55.4	#6	1268g
130	B	57.2	63.5	#8	1857g
175	B	63.5	63.5	#8	2491g

ALL DIMENSIONS IN MM

# CONCENTRIC AND SPLIT BOBBIN VERTICAL PROFILE PLUG-IN TRANSFORMERS



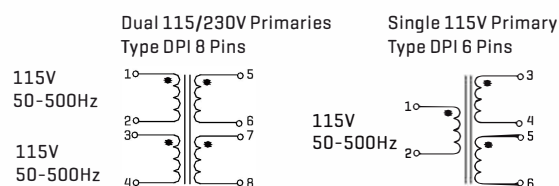
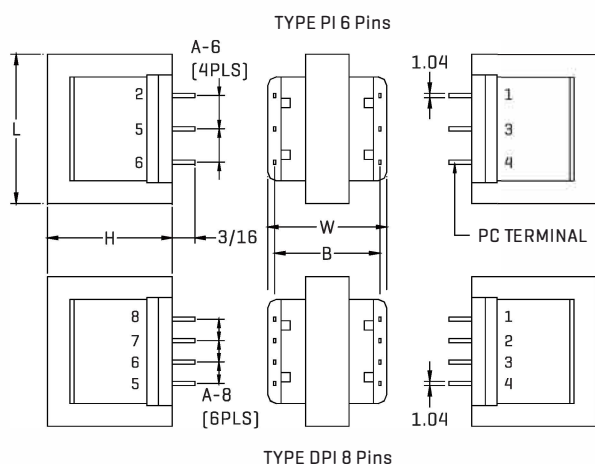
for PC board power isolation

PI SERIES CONCENTRIC VERTICAL MOUNT models provide operation frequencies from 50 to 500Hz. All parts meet RoHS compliance.

## FEATURES

- Power - 1.0VA to 24VA
- Dielectric Strength - 1500V RMS HIPOT
- Vacuum impregnated
- Insulation - Class B insulation [130 °C]
- Primaries - Single or dual primaries [115V or 115/230V - 50-500Hz]
- Secondaries - series or parallel Secondary

## PHYSICAL CHARACTERISTICS



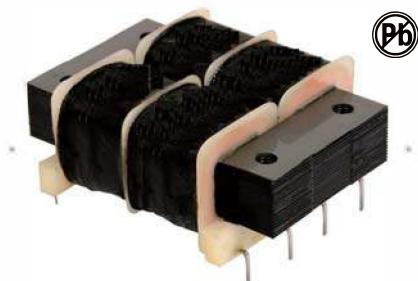
## ELECTRICAL CHARACTERISTICS AT 25°C

Part Number		VA	Secondary RMS Rating	
Single 115V 6 Pin	Dual 115/230V 8 Pin		Series V.C.T @ mA	Parallel V @ mA
FAPG-10-90	FADPG-10-90	1.0	10 @ 90	5 @ 180
FAPG-10-120	FADPG-10-120	1.2	10 @ 120	5 @ 240
FAPG-10-440	FADPG-10-440	4.4	10 @ 440	5 @ 880
FAPG-10-1000	FADPG-10-1000	10	10 @ 1000	5 @ 2000
FAPG10-2400	FADPG-10-2400	24	10 @ 2400	5 @ 4800
FAPG-12-70	FADPG-12-70	1.0	12.6 @ 70	6.3 @ 140
FAPG-12-100	FADPG-12-100	1.2	12.6 @ 100	6.3 @ 200
FAPG-12-350	FADPG-12-350	4.4	12.6 @ 350	6.3 @ 700
FAPG-12-800	FADPG-12-800	10	12.6 @ 800	6.3 @ 1600
FAPG-12-2000	FADPG-12-2000	24	12.6 @ 2000	6.3 @ 4000
FAPG-16-55	FADPG-16-55	1.0	16 @ 55	8 @ 110
FAPG-16-75	FADPG-16-75	1.2	16 @ 75	8 @ 150
FAPG-16-260	FADPG-16-260	4.4	16 @ 260	8 @ 520
FAPG-16-640	FADPG-16-640	10	16 @ 640	8 @ 1280
FAPG-16-1500	FADPG-16-1500	24	16 @ 1500	8 @ 3000
FAPG-20-45	FADPG-20-45	1.0	20 @ 45	10 @ 90
FAPG-20-60	FADPG-20-60	1.2	20 @ 60	10 @ 120
FAPG-20-220	FADPG-20-220	4.4	20 @ 220	10 @ 440
FAPG-20-500	FADPG-20-500	10	20 @ 500	10 @ 1000
FAPG-20-1200	FADPG-20-1200	24	20 @ 1200	10 @ 2400
FAPG-24-35	FADPG-24-35	1.0	24 @ 35	12 @ 70
FAPG-24-50	FADPG-24-50	1.2	24 @ 50	12 @ 100
FAPG-24-180	FADPG-24-180	4.4	24 @ 180	12 @ 360
FAPG-24-450	FADPG-24-450	10	24 @ 450	12 @ 900
FAPG-24-1000	FADPG-24-1000	24	24 @ 1000	12 @ 2000
FAPG-28-30	FADPG-28-30	1.0	28 @ 30	14 @ 60
FAPG-28-40	FADPG-28-40	1.2	28 @ 40	14 @ 80
FAPG-28-160	FADPG-28-160	4.4	28 @ 160	14 @ 320
FAPG-28-360	FADPG-28-360	10	28 @ 360	14 @ 720
FAPG-28-800	FADPG-28-800	24	28 @ 800	14 @ 1600
FAPG-34-25	FADPG-34-25	1.0	34 @ 25	17 @ 50
FAPG-34-35	FADPG-34-35	1.2	34 @ 35	17 @ 70
FAPG-34-125	FADPG-34-125	4.4	34 @ 125	17 @ 250
FAPG-34-300	FADPG-34-300	10	34 @ 300	17 @ 600
FAPG-34-700	FADPG-34-700	24	34 @ 700	17 @ 1400
FAPG-40-20	FADPG-40-20	1.0	40 @ 20	20 @ 40
FAPG-40-30	FADPG-40-30	1.2	40 @ 30	20 @ 60
FAPG-40-110	FADPG-40-110	4.4	40 @ 110	20 @ 220
FAPG-40-250	FADPG-40-250	10	40 @ 250	20 @ 500
FAPG-40-600	FADPG-40-600	24	40 @ 600	20 @ 1200
FAPG-56-15	FADPG-56-15	1.0	56 @ 15	28 @ 30
FAPG-56-20	FADPG-56-20	1.2	56 @ 20	28 @ 40
FAPG-56-80	FADPG-56-80	4.4	56 @ 80	28 @ 160
FAPG-56-180	FADPG-56-180	10	56 @ 180	28 @ 360
FAPG-56-420	FADPG-56-420	24	56 @ 420	28 @ 840
FAPG-120-8	FADPG-120-8	1.0	120 @ 8	60 @ 16
FAPG-120-10	FADPG-120-10	1.2	120 @ 10	60 @ 20
FAPG-120-35	FADPG-120-35	4.4	120 @ 35	60 @ 70
FAPG-120-85	FADPG-120-85	10	120 @ 85	60 @ 170
FAPG-120-200	FADPG-120-200	24	120 @ 200	60 @ 400
FAPG-230-4	FADPG-230-4	1.0	230 @ 4	115 @ 8
FAPG-230-5	FADPG-230-5	1.2	230 @ 5	115 @ 10
FAPG-230-20	FADPG-230-20	4.4	230 @ 20	115 @ 40
FAPG-230-40	FADPG-230-40	10	230 @ 40	115 @ 80
FAPG-230-100	FADPG-230-100	24	230 @ 100	115 @ 200

Size	VA	L	W	H	A-6 (6 pin)	A-8 (8 pin)	ML	Wgt
25	1.0	25.4	34.9	21.1	6.35	5.08	30.5	71g
37	1.2	34.9	28.6	30.2	7.92	5.08	25.4	85g
50	4.4	41.3	31.7	34.9	10.2	6.35	27.9	142g
62	10	47.6	36.5	41.3	10.2	6.35	33.0	255g
24	24	41.3	57.1	34.9	10.2	6.35	53.3	340g

ALL DIMENSIONS IN MM

# LOW PROFILE PLUG-IN TRANSFORMERS



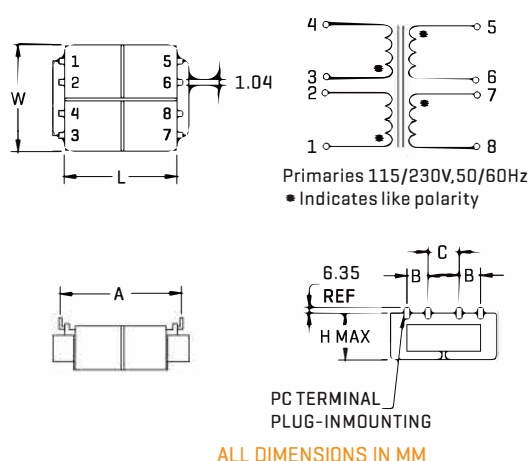
for limited-space PC board applications

These low-profile Plug-in power transformers are wound in a semi-toroidal configuration to minimize both EMI and unit height. They are designed for low-height critical pc board applications in semi-conductor control and instrumentation and for use in single, dual, or reference dc supplies and isolated control circuits. Available in five sizes. All parts meet RoHS compliance.

## FEATURES

- Low height profile
- 1500V RMS HIPOT
- PRIMARY : dual primaries [115V/230V] 50/60Hz
- SECONDARY : Series or parallel
- Vacuum impregnated
- Baked resin -- provides fully cured and environmentally
- Sizes 2, 6, and 12 are available as encapsulated and hermetically sealed [request drawings].

## PHYSICAL CHARACTERISTICS



Size	L	W	H	A	B	C	Wgt	Reg. [%] (Typ)
2	47.6	39.7	16.5	40.6	9.5	9.5	141g	20
6	47.6	39.7	21.6	40.6	9.5	9.5	198g	18
12	63.5	50.8	27.1	50.8	12.7	12.7	311g	15
24	73.0	57.2	31.8	48.3	15.2	13.5	425g	15
48	79.4	63.5	34.9	55.4	15.2	16.8	595g	12

## ELECTRICAL CHARACTERISTICS AT 25°C

Part Number	VA	Secondary RMS Rating	
		Series	Parallel
FAPL-10-250	2	10V C.T. @ 250mA	5V @ 500mA
FAPL-10-600	6	10V C.T. @ 600mA	5V @ 1.20A
FAPL-10-1200	12	10V C.T. @ 1.20A	5V @ 2.40A
FAPL-10-2400	24	10V C.T. @ 2.40A	5V @ 4.80A
FAPL-10-4800	48	10V C.T. @ 4.80A	5V @ 9.60A
FAPL-12-200	2	12.6V C.T. @ 200mA	6.3V @ 400mA
FAPL-12-450	6	12.6V C.T. @ 450mA	6.3V @ 900mA
FAPL-12-900	12	12.6V C.T. @ 900mA	6.3V @ 1.80A
FAPL-12-1900	24	12.6V C.T. @ 1.90A	6.3V @ 3.80A
FAPL-12-3800	48	12.6V C.T. @ 3.80A	6.3V @ 7.60A
FAPL-16-150	2	16V C.T. @ 150mA	8V @ 300mA
FAPL-16-350	6	16V C.T. @ 350mA	8V @ 700mA
FAPL-16-700	12	16V C.T. @ 700mA	8V @ 1.40A
FAPL-16-1500	24	16V C.T. @ 1.50A	8V @ 3.00A
FAPL-16-3000	48	16V C.T. @ 3.00A	8V @ 6.00A
FAPL-18-135	2	18V C.T. @ 135mA	9V @ 270mA
FAPL-18-325	6	18V C.T. @ 325mA	9V @ 650mA
FAPL-18-650	12	18V C.T. @ 650mA	9V @ 1.30A
FAPL-18-1300	24	18V C.T. @ 1.30A	9V @ 2.60A
FAPL-18-2600	48	18V C.T. @ 2.60A	9V @ 5.20A
FAPL-20-125	2	20V C.T. @ 125mA	10V @ 250mA
FAPL-20-300	6	20V C.T. @ 300mA	10V @ 600mA
FAPL-20-600	12	20V C.T. @ 600mA	10V @ 1.20A
FAPL-20-1200	24	20V C.T. @ 1.20A	10V @ 2.40A
FAPL-20-2400	48	20V C.T. @ 2.40A	10V @ 4.80A
FAPL-24-100	2	24V C.T. @ 100mA	12V @ 200mA
FAPL-24-250	6	24V C.T. @ 250mA	12V @ 500mA
FAPL-24-500	12	24V C.T. @ 500mA	12V @ 1.00A
FAPL-24-1000	24	24V C.T. @ 1.00A	12V @ 2.00A
FAPL-24-2000	48	24V C.T. @ 2.00A	12V @ 4.00A
FAPL-28-90	2	28V C.T. @ 90mA	14V @ 180mA
FAPL-28-215	6	28V C.T. @ 215mA	14V @ 430mA
FAPL-28-430	12	28V C.T. @ 430mA	14V @ 860mA
FAPL-28-850	24	28V C.T. @ 850mA	14V @ 1.70A
FAPL-28-1700	48	28V C.T. @ 1.70A	14V @ 3.40A
FAPL-30-85	2	30V C.T. @ 85mA	15V @ 170mA
FAPL-30-200	6	30V C.T. @ 200mA	15V @ 400mA
FAPL-30-400	12	30V C.T. @ 400mA	15V @ 800mA
FAPL-30-800	24	30V C.T. @ 800mA	15V @ 1.60A
FAPL-30-1600	48	30V C.T. @ 1.60A	15V @ 3.20A
FAPL-34-75	2	34V C.T. @ 75mA	17V @ 150mA
FAPL-34-170	6	34V C.T. @ 170mA	17V @ 340mA
FAPL-34-340	12	34V C.T. @ 340mA	17V @ 680mA
FAPL-34-700	24	34V C.T. @ 700mA	17V @ 1.40A
FAPL-34-1400	48	34V C.T. @ 1.40A	17V @ 2.80A
FAPL-40-60	2	40V C.T. @ 60mA	20V @ 120mA
FAPL-40-150	6	40V C.T. @ 150mA	20V @ 300mA
FAPL-40-300	12	40V C.T. @ 300mA	20V @ 600mA
FAPL-40-600	24	40V C.T. @ 600mA	20V @ 1.20A
FAPL-40-1200	48	40V C.T. @ 1.20A	20V @ 2.40A
FAPL-56-45	2	56V C.T. @ 45mA	28V @ 90mA
FAPL-56-100	6	56V C.T. @ 100mA	28V @ 200mA
FAPL-56-200	12	56V C.T. @ 200mA	28V @ 400mA
FAPL-56-425	24	56V C.T. @ 425mA	28V @ 850mA
FAPL-56-850	48	56V C.T. @ 850mA	28V @ 1.70A
FAPL-88-28	2	88V C.T. @ 28mA	44V @ 56mA
FAPL-88-65	6	88V C.T. @ 65mA	44V @ 130mA
FAPL-88-130	12	88V C.T. @ 130mA	44V @ 260mA
FAPL-120-20	2	120V C.T. @ 20mA	60V @ 40mA
FAPL-120-50	6	120V C.T. @ 50mA	60V @ 100mA
FAPL-120-100	12	120V C.T. @ 100mA	60V @ 200mA
FAPL-230-10	2	230V C.T. @ 10mA	115V @ 20mA
FAPL-230-25	6	230V C.T. @ 25mA	115V @ 50mA
FAPL-230-50	12	230V C.T. @ 50mA	115V @ 100mA



# INTERNATIONAL PC PLUG-IN POWER TRANSFORMERS

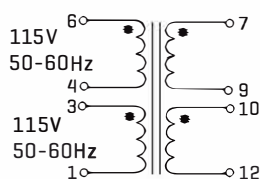
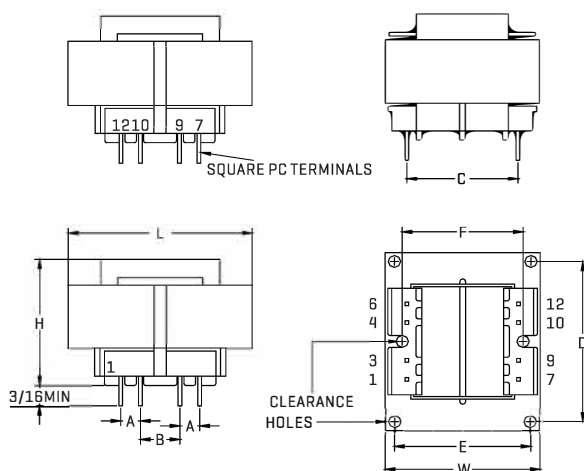


All parts meet RoHS compliance.

## FEATURES

- Power – 2.5VA to 56VA
- PC board plug-in mounting
- Dual bobbin; double reinforced insulation
- High (4000V) isolation
- Vacuum impregnated
- Primaries : Dual primaries [115/230V - 50/60Hz]
- Secondaries can be series or parallel connected

## PHYSICAL CHARACTERISTICS



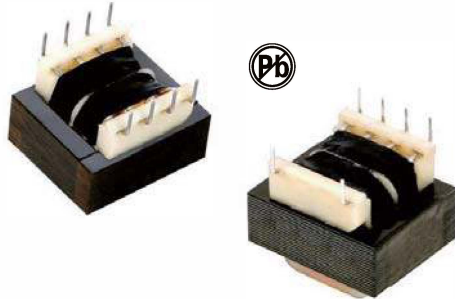
## ELECTRICAL CHARACTERISTICS AT 25°C

Part Number	VA	Secondary RMS Rating	
		Series	Parallel
FAPT-2.5-10	2.5	10V C.T. @ 0.25A	10V C.T. @ 0.25A
FAPT-5.0-10	5.0	10V C.T. @ 0.5A	10V C.T. @ 0.5A
FAPT-10-10	10	10V C.T. @ 1.0A	10V C.T. @ 1.0A
FAPT-20-10	20	10V C.T. @ 2.0A	10V C.T. @ 2.0A
FAPT-30-10	30	10V C.T. @ 3.0A	10V C.T. @ 3.0A
FAPT-56-10	56	10V C.T. @ 5.6A	10V C.T. @ 5.6A
FAPT-2.5-12	2.5	12.6V C.T. @ 0.2A	12.6V C.T. @ 0.2A
FAPT-5.0-12	5.0	12.6V C.T. @ 0.4A	12.6V C.T. @ 0.4A
FAPT-10-12	10	12.6V C.T. @ 0.8A	12.6V C.T. @ 0.8A
FAPT-20-12	20	12.6V C.T. @ 1.6A	12.6V C.T. @ 1.6A
FAPT-30-12	30	12.6V C.T. @ 2.4A	12.6V C.T. @ 2.4A
FAPT-56-12	56	12.6V C.T. @ 4.4A	12.6V C.T. @ 4.4A
FAPT-2.5-16	2.5	16V C.T. @ 0.15A	16V C.T. @ 0.15A
FAPT-5.0-16	5.0	16V C.T. @ 0.31A	16V C.T. @ 0.31A
FAPT-10-16	10	16V C.T. @ 0.62A	16V C.T. @ 0.62A
FAPT-20-16	20	16V C.T. @ 1.25A	16V C.T. @ 1.25A
FAPT-30-16	30	16V C.T. @ 1.9A	16V C.T. @ 1.9A
FAPT-56-16	56	16V C.T. @ 3.5A	16V C.T. @ 3.5A
FAPT-2.5-20	2.5	20V C.T. @ 0.12A	20V C.T. @ 0.12A
FAPT-5.0-20	5.0	20V C.T. @ 0.25A	20V C.T. @ 0.25A
FAPT-10-20	10	20V C.T. @ 0.5A	20V C.T. @ 0.5A
FAPT-20-20	20	20V C.T. @ 1.0A	20V C.T. @ 1.0A
FAPT-30-20	30	20V C.T. @ 1.5A	20V C.T. @ 1.5A
FAPT-56-20	56	20V C.T. @ 2.8A	20V C.T. @ 2.8A
FAPT-2.5-24	2.5	24V C.T. @ 0.1A	24V C.T. @ 0.1A
FAPT-5.0-24	5.0	24V C.T. @ 0.21A	24V C.T. @ 0.21A
FAPT-10-24	10	24V C.T. @ 0.42A	24V C.T. @ 0.42A
FAPT-20-24	20	24V C.T. @ 0.83A	24V C.T. @ 0.83A
FAPT-30-24	30	24V C.T. @ 1.25A	24V C.T. @ 1.25A
FAPT-56-24	56	24V C.T. @ 2.33A	24V C.T. @ 2.33A
FAPT-2.5-28	2.5	28V C.T. @ 0.09A	28V C.T. @ 0.09A
FAPT-5.0-28	5.0	28V C.T. @ 0.18A	28V C.T. @ 0.18A
FAPT-10-28	10	28V C.T. @ 0.36A	28V C.T. @ 0.36A
FAPT-20-28	20	28V C.T. @ 0.72A	28V C.T. @ 0.72A
FAPT-30-28	30	28V C.T. @ 1.06A	28V C.T. @ 1.06A
FAPT-56-28	56	28V C.T. @ 2.0A	28V C.T. @ 2.0A
FAPT-2.5-36	2.5	36V C.T. @ 0.07A	36V C.T. @ 0.07A
FAPT-5.0-36	5.0	36V C.T. @ 0.14A	36V C.T. @ 0.14A
FAPT-10-36	10	36V C.T. @ 0.28A	36V C.T. @ 0.28A
FAPT-20-36	20	36V C.T. @ 0.56A	36V C.T. @ 0.56A
FAPT-30-36	30	36V C.T. @ 0.82A	36V C.T. @ 0.82A
FAPT-56-36	56	36V C.T. @ 1.56A	36V C.T. @ 1.56A

VA	Dimensions					
	L	W	H	A	B	C
2.5	41.3	33.3	28.6	5.08	6.35	24.4
5.0	41.3	33.3	34.9	5.08	10.2	25.4
10	47.6	39.7	34.9	5.08	10.2	29.0
20	57.2	47.6	41.3	10.2	10.2	37.1
30	66.7	55.5	39.7	14.0	6.99	42.7
56	76.2	63.5	46	15.2	7.62	48.3
VA	D	E	F	PIN DIM	MTG	Wgt
2.5	---	---	27.0	SQ0.64	#4	113g
5.0	---	---	27.0	SQ0.64	#4	167g
10	---	---	31.8	SQ0.97	#4	240g
20	---	---	38.1	SQ0.97	#4	407g
30	55.4	44.5	---	SQ1.14	#6	520g
56	63.5	50.8	---	SQ1.14	#6	770g

ALL DIMENSIONS IN MM

# SPLIT BOBBIN PLUG-IN TRANSFORMERS



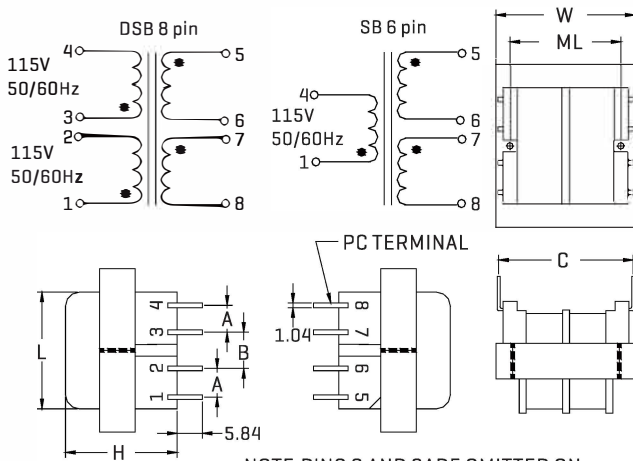
for PC board power isolation

Split bobbin : primaries and secondaries are wound side-by-side rather than concentrically to obtain the benefits listed below. All parts meet RoHS compliance.

## FEATURES

- High [2500V] isolation ;2500V RMS HIPOT
- No crossover contact between primary and secondary leads
- Vacuum impregnated - - withstands modern board washing systems and reduces audible noise
- Class B insulation [130 C]
- Available in single or dual primary
- Series or parallel secondaries

## PHYSICAL CHARACTERISTICS



ALL DIMENSIONS IN MM

Size	VA	L	W	H	ML	A	B	C	Wgt
2	1.1	28.7	28.7	23.9	---	6.35	6.35	30.5	77g
3	2.4	35.1	28.7	30.2	---	6.35	6.35	30.5	113g
4	6	40.6	33.3	33.3	2.69	6.35	6.35	32.5	199g
5	12	47.2	39.6	36.6	31.8	7.62	7.62	35.8	317g
6	20	57.2	47.2	36.6	38.1	7.62	7.62	40.6	362g
7	36	66.8	55.6	39.6	Note	10.2	10.2	45.7	498g

Notes : Size 7 has 4 mtg. holes on 2 3/16 x 13/4 centers.

## ELECTRICAL CHARACTERISTICS AT 25°C

Part Number		Secondary RMS Rating	
Single 115V 6Pin	Dual 115/230V 8Pin	Series	Parallel
FASB-2-10	FADSB-2-10	10V C.T. @ 0.11A	5V @ 0.22A
FASB-3-10	FADSB-3-10	10V C.T. @ 0.25A	5V @ 0.5A
FASB-4-10	FADSB-4-10	10V C.T. @ 0.6A	5V @ 1.2A
FASB-5-10	FADSB-5-10	10V C.T. @ 1.2A	5V @ 2.4A
FASB-6-10	FADSB-6-10	10V C.T. @ 2A	5V @ 4A
FASB-7-10	FADSB-7-10	10V C.T. @ 3.6A	5V @ 7.2A
FASB-2-12	FADSB-2-12	12.6V C.T. @ 0.09A	6.3V @ 0.18A
FASB-3-12	FADSB-3-12	12.6V C.T. @ 0.2A	6.3V @ 0.4A
FASB-4-12	FADSB-4-12	12.6V C.T. @ 0.5A	6.3V @ 1.0A
FASB-5-12	FADSB-5-12	12.6V C.T. @ 1.0A	6.3V @ 2.0A
FASB-6-12	FADSB-6-12	12.6V C.T. @ 1.6A	6.3V @ 3.2A
FASB-7-12	FADSB-7-12	12.6V C.T. @ 2.85A	6.3V @ 5.7A
FASB-2-16	FADSB-2-16	16V C.T. @ 0.07A	8V @ 0.14A
FASB-3-16	FADSB-3-16	16V C.T. @ 0.15A	8V @ 0.3A
FASB-4-16	FADSB-4-16	16V C.T. @ 0.4A	8V @ 0.8A
FASB-5-16	FADSB-5-16	16V C.T. @ 0.8A	8V @ 1.6A
FASB-6-16	FADSB-6-16	16V C.T. @ 1.25A	8V @ 2.5A
FASB-7-16	FADSB-7-16	16V C.T. @ 2.25A	8V @ 4.5A
FASB-2-20	FADSB-2-20	20V C.T. @ 0.055A	10V @ 0.11A
FASB-3-20	FADSB-3-20	20V C.T. @ 0.12A	10V @ 0.24A
FASB-4-20	FADSB-4-20	20V C.T. @ 0.3A	10V @ 0.6A
FASB-5-20	FADSB-5-20	20V C.T. @ 0.6A	10V @ 1.2A
FASB-6-20	FADSB-6-20	20V C.T. @ 1A	10V @ 2A
FASB-7-20	FADSB-7-20	20V C.T. @ 1.8A	10V @ 3.6A
FASB-2-24	FADSB-2-24	24V C.T. @ 0.045A	12V @ 0.09A
FASB-3-24	FADSB-3-24	24V C.T. @ 0.1A	12V @ 0.2A
FASB-4-24	FADSB-4-24	24V C.T. @ 0.25A	12V @ 0.5A
FASB-5-24	FADSB-5-24	24V C.T. @ 0.5A	12V @ 1.0A
FASB-6-24	FADSB-6-24	24V C.T. @ 0.8A	12V @ 1.6A
FASB-7-24	FADSB-7-24	24V C.T. @ 1.5A	12V @ 3.0A
FASB-2-28	FADSB-2-28	28V C.T. @ 0.04A	14V @ 0.08A
FASB-3-28	FADSB-3-28	28V C.T. @ 0.085A	14V @ 0.17A
FASB-4-28	FADSB-4-28	28V C.T. @ 0.2A	14V @ 0.4A
FASB-5-28	FADSB-5-28	28V C.T. @ 0.42A	14V @ 0.84A
FASB-6-28	FADSB-6-28	28V C.T. @ 0.7A	14V @ 1.4A
FASB-7-28	FADSB-7-28	28V C.T. @ 1.3A	14V @ 2.6A
FASB-2-36	FADSB-2-36	36V C.T. @ 0.03A	18V @ 0.06A
FASB-3-36	FADSB-3-36	36V C.T. @ 0.065A	18V @ 0.13A
FASB-4-36	FADSB-4-36	36V C.T. @ 0.17A	18V @ 0.34A
FASB-5-36	FADSB-5-36	36V C.T. @ 0.35A	18V @ 0.7A
FASB-6-36	FADSB-6-36	36V C.T. @ 0.55A	18V @ 1.1A
FASB-7-36	FADSB-7-36	36V C.T. @ 1.0A	18V @ 2.0A
FASB-2-48	FADSB-2-48	48V C.T. @ 0.023A	24V @ 0.046A
FASB-3-48	FADSB-3-48	48V C.T. @ 0.05A	24V @ 0.1A
FASB-4-48	FADSB-4-48	48V C.T. @ 0.125A	24V @ 0.25A
FASB-5-48	FADSB-5-48	48V C.T. @ 0.25A	24V @ 0.5A
FASB-6-48	FADSB-6-48	48V C.T. @ 0.4A	24V @ 0.8A
FASB-7-48	FADSB-7-48	48V C.T. @ 0.75A	24V @ 1.5A
FASB-2-56	FADSB-2-56	56V C.T. @ 0.02A	28V @ 0.04A
FASB-3-56	FADSB-3-56	56V C.T. @ 0.045A	28V @ 0.09A
FASB-4-56	FADSB-4-56	56V C.T. @ 0.11A	28V @ 0.22A
FASB-5-56	FADSB-5-56	56V C.T. @ 0.22A	28V @ 0.44A
FASB-6-56	FADSB-6-56	56V C.T. @ 0.35A	28V @ 0.7A
FASB-7-56	FADSB-7-56	56V C.T. @ 0.65A	28V @ 1.3A
FASB-2-120	FADSB-2-120	120V C.T. @ 0.01A	60V @ 0.02A
FASB-3-120	FADSB-3-120	120V C.T. @ 0.02A	60V @ 0.04A
FASB-4-120	FADSB-4-120	120V C.T. @ 0.05A	60V @ 0.1A
FASB-5-120	FADSB-5-120	120V C.T. @ 0.1A	60V @ 0.2A
FASB-6-120	FADSB-6-120	120V C.T. @ 0.16A	60V @ 0.32A
FASB-7-120	FADSB-7-120	120V C.T. @ 0.3A	60V @ 0.6A

Primary Ratings : "SB" 115V 50/60Hz 6-pin  
 "DSB" 115/230V 50/60Hz 8-pin  
 [Other primary ratings available on request.]