

Single port transformer modules 18Pin series

FEATURES

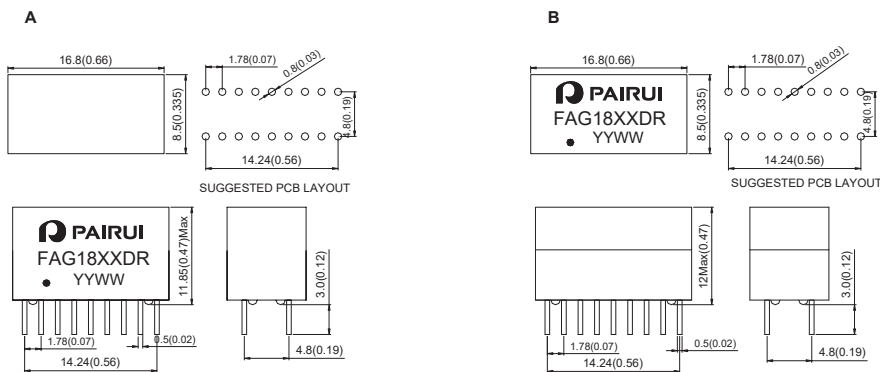
Compliant with IEEE 802.3 standard.
Primary inductance: 350uH Min. @ 100kHz, 0.1Vrms, 8mA .
RoHS compliant



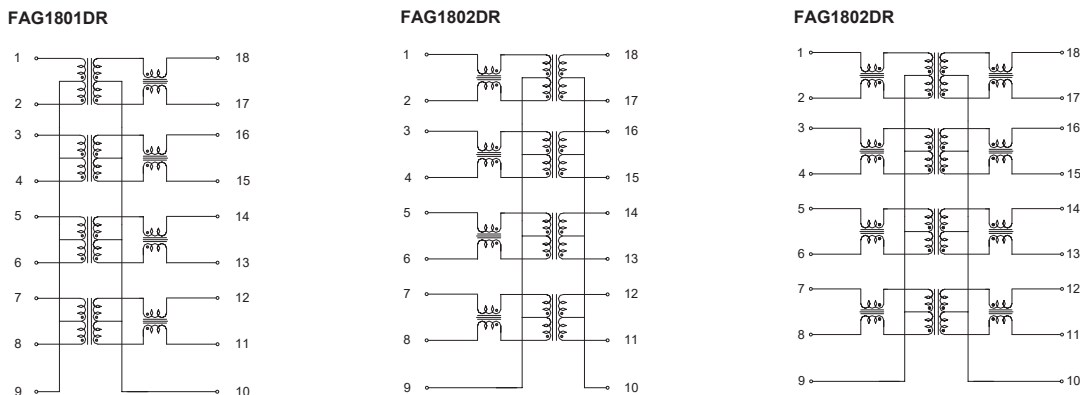
Electrical Specification @ 25°C Operating Temperature 0 to 70°C

Part Number	Insertion Loss (dB Max) 1-125MHz	Return Loss (dB Typical) MHz				CMRR (dB Min) MHz		Cross talk (dB Min) MHz		Isolation Voltage (Vrms Min)	Package
		1-30	40	50	60-80	0.1-60	60-100	0.1-60	60-100		
FAG1801DR	-1.0	-18	-14.4	-13.1	-12	-42	-40	-40	-38	1500	B
FAG1802DR	-1.0	-18	-14.4	-13.1	-12	-42	-40	-40	-38	1500	A
FAG1803DR	-1.0	-18	-14.4	-13.1	-12	-42	-40	-40	-38	1500	B

Dimension : mm[inch] +/- 0.25[0.01]



Schematic



Single port transformer modules 24Pin series

FEATURES

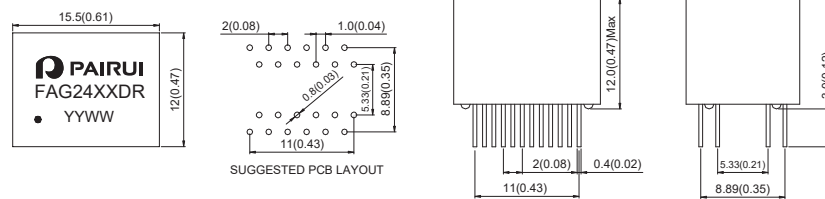
Compliant with IEEE 802.3 standard.
Primary inductance(Lp)350uH Min.@ 100KHz,0.1Vrms,8mA
RoHS compliant



Electrical Specification@25°C Operating Temperature 0 to 70°C

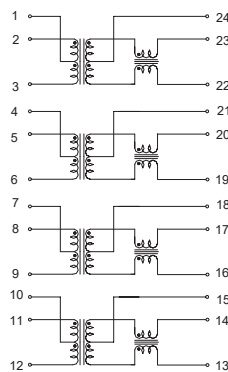
Part Number	Insertion Loss (dB Max) 1-125MHz	Return Loss (dB Typical) MHz				CMRR (dB Min) MHz		Cross talk (dB Min) MHz		Isolation Voltage (Vrms Min)	Package
		1-30	40	50	60-80	0.1-60	60-100	0.1-60	60-100		
FAG2401DR	-1.0	-18	-14.4	-13.1	-12	-42	-40	-40	-38	1500	A
FAG2402DR	-1.0	-18	-14.4	-13.1	-12	-42	-40	-40	-38	1500	A
FAG2403DR	-1.0	-18	-14.4	-13.1	-12	-42	-40	-40	-38	1500	A

Dimension : mm[inch]+/-0.25[0.01]

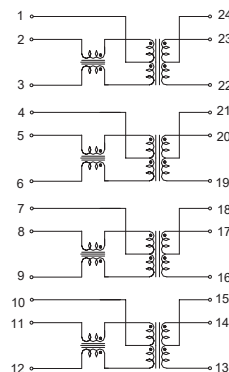


Schematic

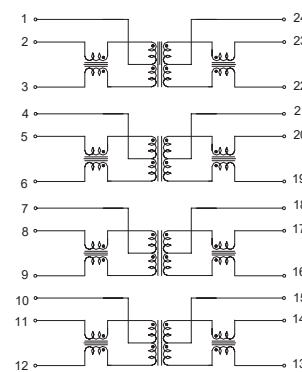
FAG2401DR



FAG2402DR



FAG2403DR



Transformer Module 24Pin series

FEATURES

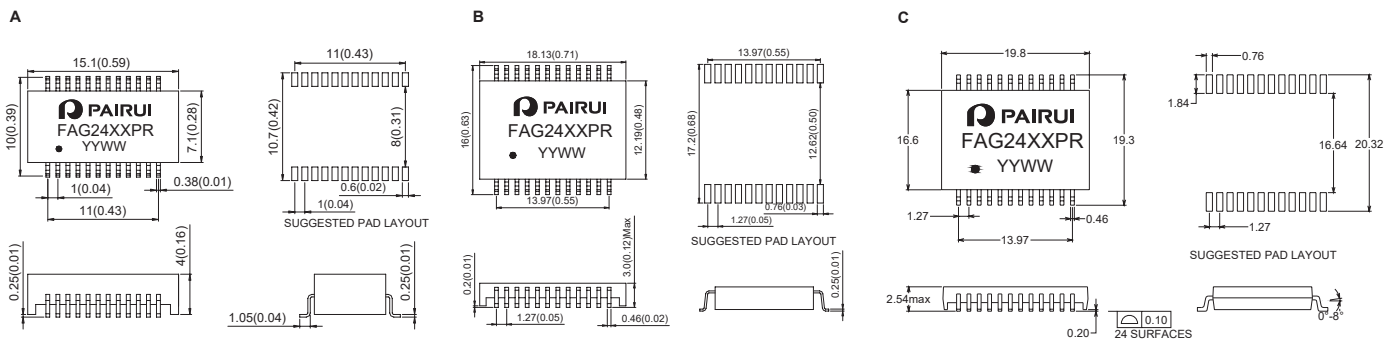
Compliant with IEEE 802.3 standard.
RoHS compliant



Electrical Specification@25°C Operating Temperature 0 to 70°C

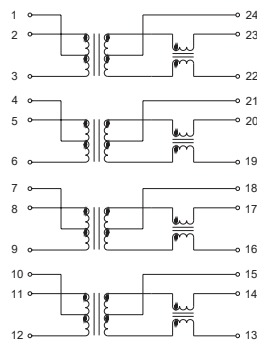
Part Number	Insertion Loss (dB Max) 1-100MHz	Return Loss (dB Typical) MHz				CMRR (dB Min) MHz		Cross talk (dB Min) MHz		Isolation Voltage (Vrms Min)	Primary Inductance (uH Min) 100KHZ,0.1V	Package
		1-30	40	50	60-80	0.1-60	60-100	0.1-60	60-100			
FAG2401PR	-1.0	-18	-14.4	-13.1	-12	-42	-40	-40	-38	1500	350	A
FAG2402PR	-1.0	-18	-14.4	-13.1	-12	-42	-40	-40	-38	1500	350	B
FAG2403PR	-1.0	-18	-14.4	-13.1	-12	-42	-40	-40	-38	1500	350	C
FAG2404PR	-1.0	-18	-14.4	-13.1	-12	-42	-40	-40	-38	1500	350	C
FAG2405PR	-1.0	-18	-14.4	-13.1	-12	-42	-40	-40	-38	1500	350 8mA DC Bias	B

Dimension : mm[inch]+/-0.25[0.01]

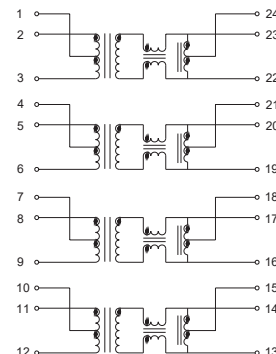


Schematic

FAG2401PR, FAG2403PR, FAG2405PR



FAG2402PR, FAG2404PR



Single port transformer modules 24Pin series

FEATURES

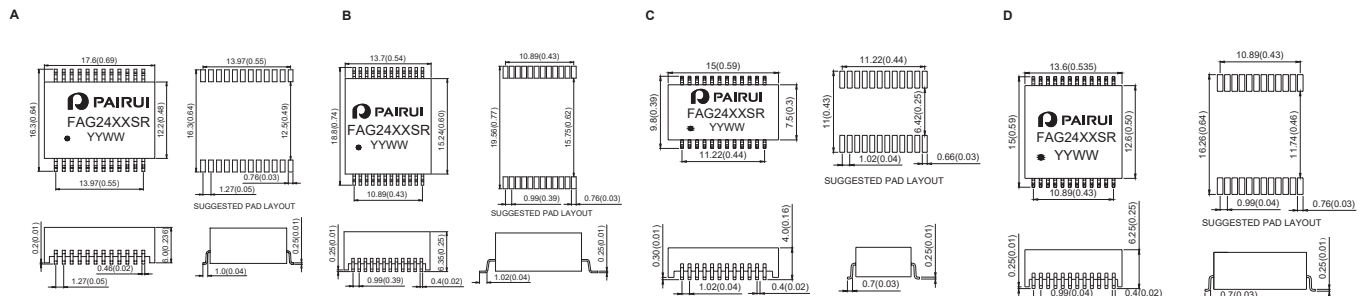
Cable interface for isolation and low common mode emissions
Compliant with IEEE 802.3 standard for 1000Base-T
RoHS compliant



Electrical Specification@25°C Operating Temperature 0 to 70°C

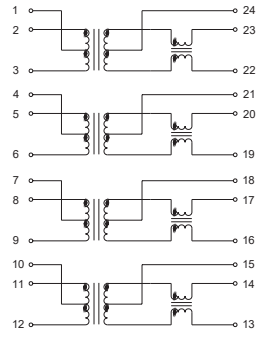
Part Number	Insertion Loss (dB Max) 1-125MHz	Return Loss (dB Typical) MHz				CMRR (dB Min) MHz		Cross talk (dB Min) MHz		Isolation Voltage (Vrms Min)	Package
		1-30	40	50	60-80	0.1-60	60-100	0.1-60	60-100		
FAG2401SR	-1.0	-18	-14.4	-13.1	-12	-42	-40	-40	-38	1500	A
FAG2402SR	-1.0	-18	-14.4	-13.1	-12	-42	-40	-40	-38	1500	A
FAG2403SR	-1.0	-18	-14.4	-13.1	-12	-42	-40	-40	-38	1500	B
FAG2404SR	-1.0	-18	-14.4	-13.1	-12	-42	-40	-40	-38	1500	B
FAG2405SR	-1.0	-18	-14.4	-13.1	-12	-42	-40	-40	-38	1500	B
FAG2406SR	-1.0	-18	-14.4	-13.1	-12	-42	-40	-40	-38	1500	C
FAG2407SR	-1.0	-18	-14.4	-13.1	-12	-42	-40	-40	-38	1500	B
FAG2408SR	-1.0	-18	-14.4	-13.1	-12	-42	-40	-40	-38	1500	C
FAG2409SR	-1.0	-18	-14.4	-13.1	-12	-42	-40	-40	-38	1500	D
FAG2410SR	-1.0	-18	-14.4	-13.1	-12	-42	-40	-40	-38	1500	D
FAG2411SR	-1.0	-18	-14.4	-13.1	-12	-42	-40	-40	-38	1500	A
FAG2412SR	-1.0	-18	-14.4	-13.1	-12	-42	-40	-40	-38	1500	B
FAG2413SR	-1.0	-18	-14.4	-13.1	-12	-42	-40	-40	-38	1500	D
FAG2414SR	-1.0	-18	-14.4	-13.1	-12	-42	-40	-40	-38	1500	A
FAG2415SR	-1.0	-18	-14.4	-13.1	-12	-42	-40	-40	-38	1500	A

Dimension : mm[inch] +/-0.25[0.01]

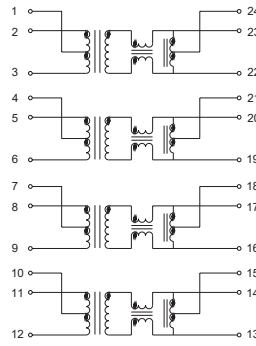


Schematic

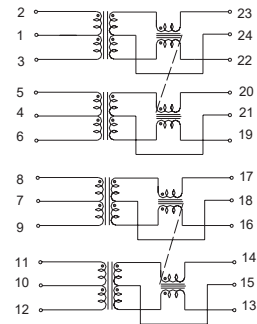
FAG2401SR, FAG2404SR, FAG2406SR,
FAG2409SR, FAG2414SR



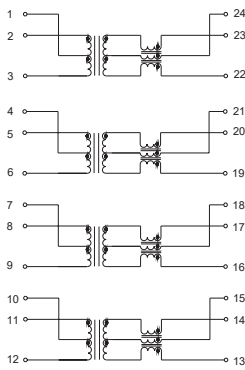
FAG2402SR, FAG2403SR



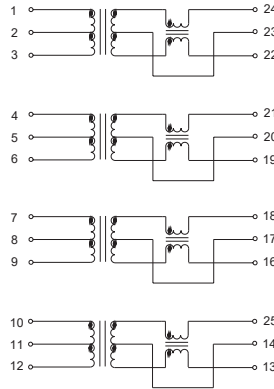
FAG2410SR



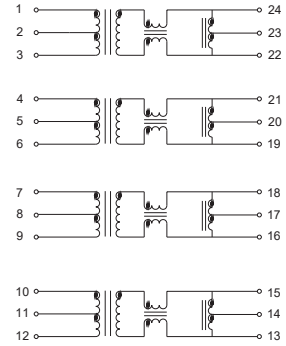
FAG2405SR



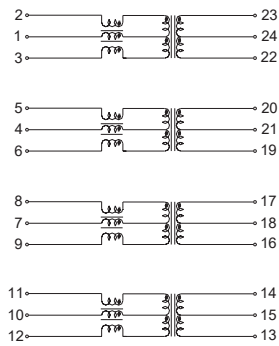
FAG2407SR



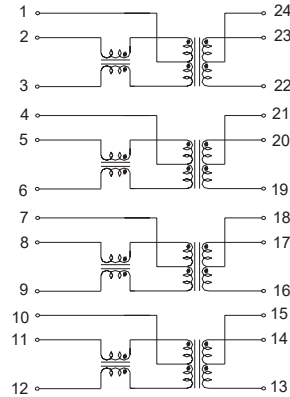
FAG2408SR, FAG2412SR



FAG2415SR, FAG2413SR



FAG2411SR



Dual port transformer modules 48Pin series

FEATURES

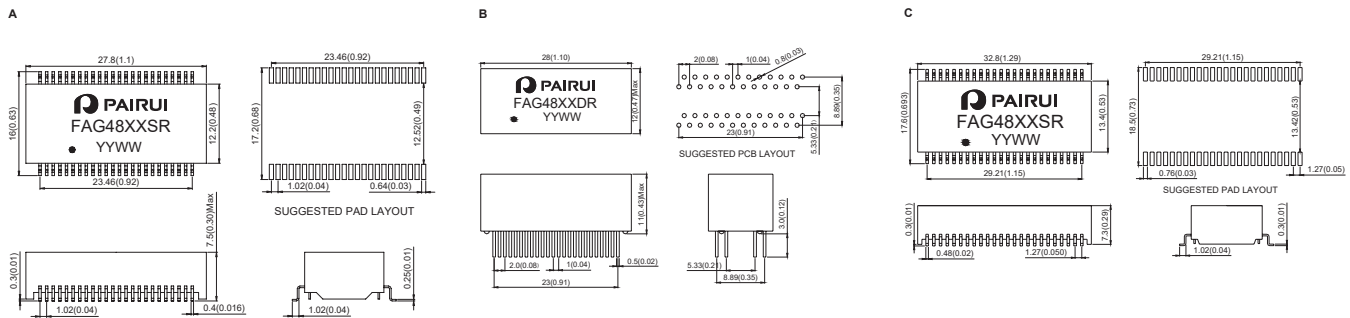
Cable interface for isolation and low common mode emissions
Compliant with IEEE 802.3 standard for 1000Base-T
RoHS compliant



Electrical Specification@25°C Operating Temperature 0 to 70°C

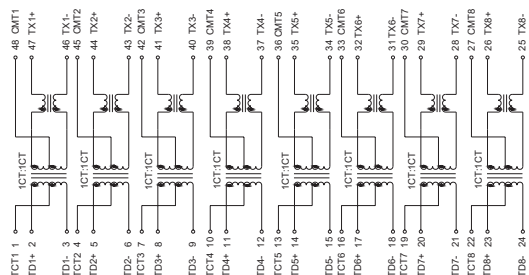
Part Number	Insertion Loss (dB Max) 1-125MHz	Return Loss (dB Typical) MHz				CMRR (dB Min) MHz		Cross talk (dB Min) MHz		Isolation Voltage (Vrms Min)	Package
		1-30	40	50	60-80	0.1-60	60-100	0.1-60	60-100		
FAG4801SR	-1.0	-18	-14.4	-13.1	-12	-42	-40	-40	-38	1500	A
FAG4802SR	-1.0	-18	-14.4	-13.1	-12	-42	-40	-40	-38	1500	A
FAG4803SR	-1.0	-18	-14.4	-13.1	-12	-42	-40	-40	-38	1500	A
FAG4804SR	-1.0	-18	-14.4	-13.1	-12	-42	-40	-40	-38	1500	A
FAG4805SR	-1.0	-18	-14.4	-13.1	-12	-42	-40	-40	-38	1500	A
FAG4806SR	-1.0	-18	-14.4	-13.1	-12	-42	-40	-40	-38	1500	A
FAG4807SR	-1.0	-18	-14.4	-13.1	-12	-42	-40	-40	-38	1500	C
FAG4808SR	-1.0	-18	-14.4	-13.1	-12	-42	-40	-40	-38	1500	A
FAG4809SR	-1.0	-18	-14.4	-13.1	-12	-42	-40	-40	-38	1500	A
FAG4810SR	-1.0	-18	-14.4	-13.1	-12	-42	-40	-40	-38	1500	A
FAG4801DR	-1.0	-18	-14.4	-13.1	-12	-42	-40	-40	-38	1500	B
FAG4802DR	-1.0	-18	-14.4	-13.1	-12	-42	-40	-40	-38	1500	B
FAG4803DR	-1.0	-18	-14.4	-13.1	-12	-42	-40	-40	-38	1500	B
FAG4804DR	-1.0	-18	-14.4	-13.1	-12	-42	-40	-40	-38	1500	B

Dimension : mm[inch]+/-0.25[0.01]

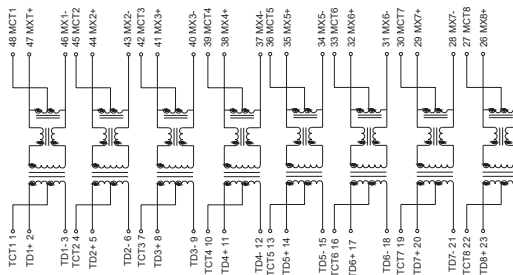


Schematic

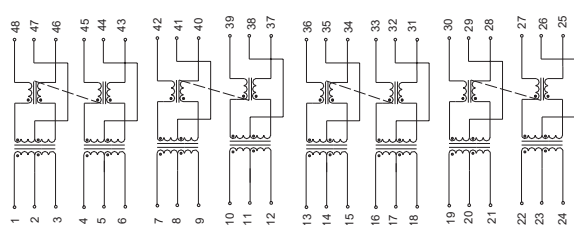
FAG4801SR,FAG4801DR



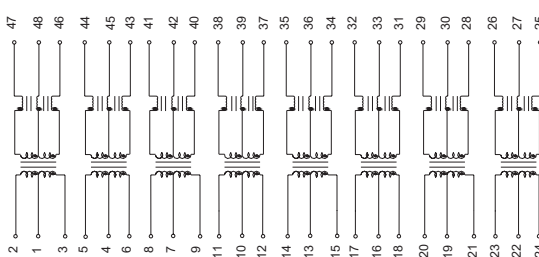
FAG4802SR



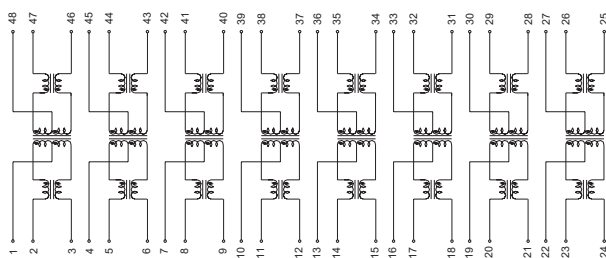
FAG4803SR,FAG4802DR



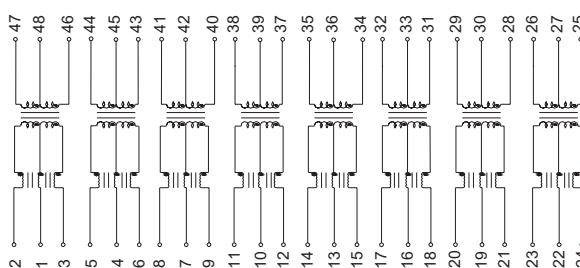
FAG4804SR



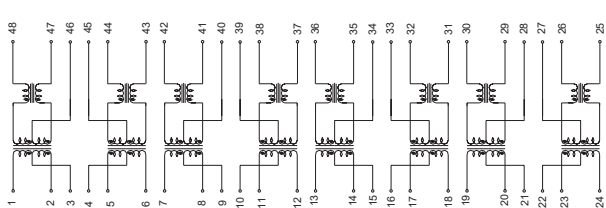
FAG4810SR,FAG4804DR



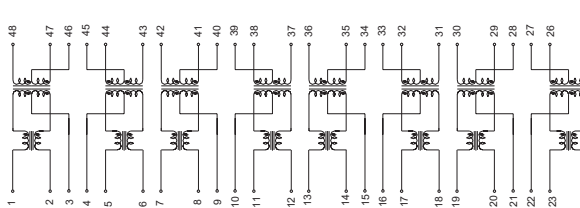
FAG4806SR



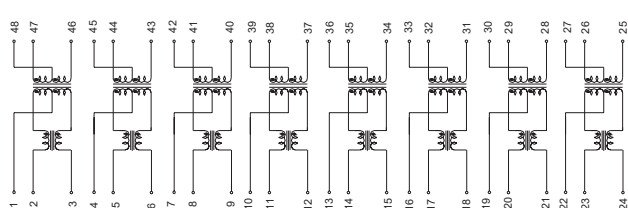
FAG4807SR,FAG4808SR



FAG4809SR



FAG4805SR,FAG4803DR



Quad port transformer modules 72Pin series

FEATURES

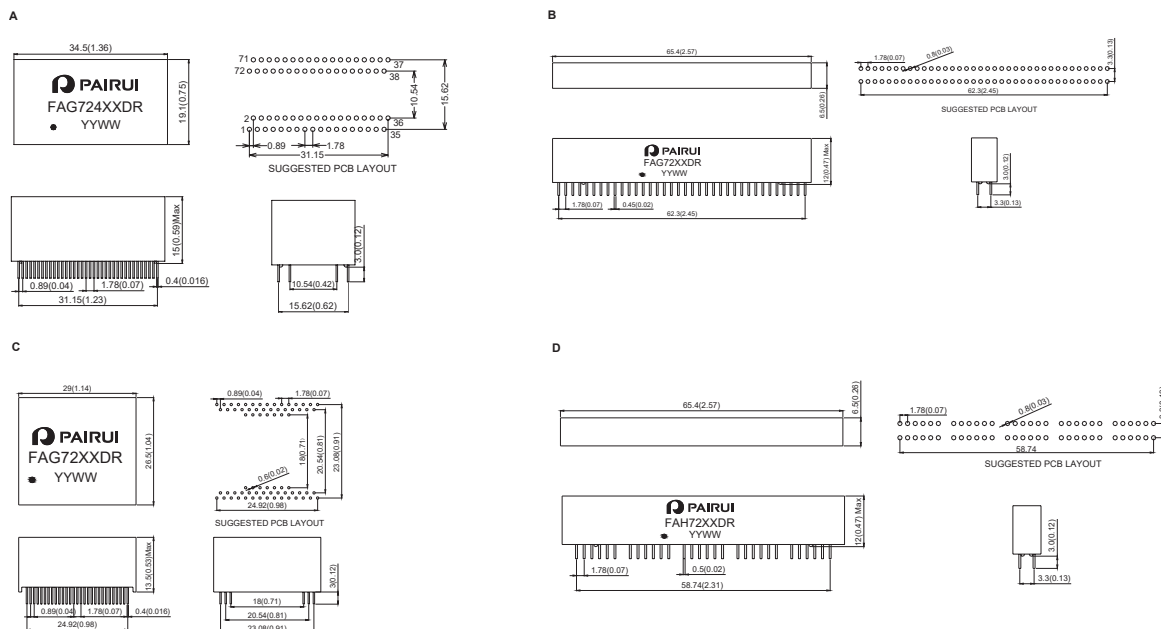
Cable interface for isolation and low common mode emissions
Compliant with IEEE 802.3 standard for 1000Base-T
RoHS compliant



Electrical Specification@25°C Operating Temperature 0 to 70°C

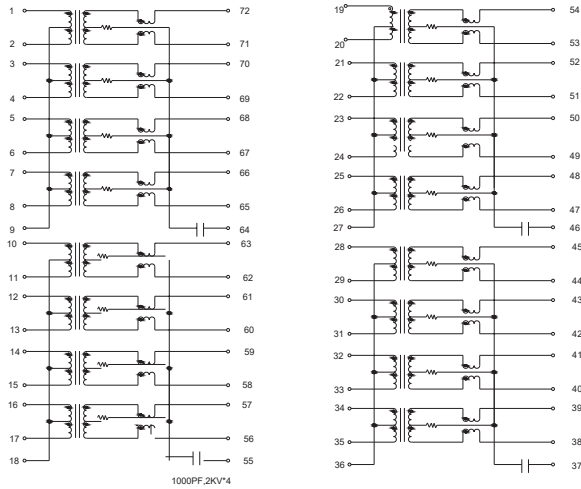
Part Number	Insertion Loss (dB Max) 1-125MHz	Return Loss (dB Typical) MHz				CMRR (dB Min) MHz		Cross talk (dB Min) MHz		Isolation Voltage (Vrms Min)	Package
		1-30	40	50	60-80	0.1-60	60-100	0.1-60	60-100		
FAG7201DR	-1.0	-18	-14.4	-13.1	-12	-42	-40	-40	-38	1500	A
FAG7202DR	-1.0	-18	-14.4	-13.1	-12	-42	-40	-40	-38	1500	B
FAG7203DR	-1.0	-18	-14.4	-13.1	-12	-42	-40	-40	-38	1500	C
FAG7204DR	-1.0	-18	-14.4	-13.1	-12	-42	-40	-40	-38	1500	C
FAG7205DR	-1.0	-18	-14.4	-13.1	-12	-42	-40	-40	-38	1500	A
FAG7206DR	-1.0	-18	-14.4	-13.1	-12	-42	-40	-40	-38	1500	C
FAG7207DR	-1.0	-18	-14.4	-13.1	-12	-42	-40	-40	-38	1500	A
FAG7208DR	-1.0	-18	-14.4	-13.1	-12	-42	-40	-40	-38	1500	B
FAG7209DR	-1.0	-18	-14.4	-13.1	-12	-42	-40	-40	-38	1500	A
FAG7210DR	-1.0	-18	-14.4	-13.1	-12	-42	-40	-40	-38	1500	C
FAG7211DR	-1.0	-18	-14.4	-13.1	-12	-42	-40	-40	-38	1500	C
FAH7201DR	-1.0	-18	-14.4	-13.1	-12	-42	-40	-40	-38	1500	D

Dimension : mm[inch]+/-0.25[0.01]

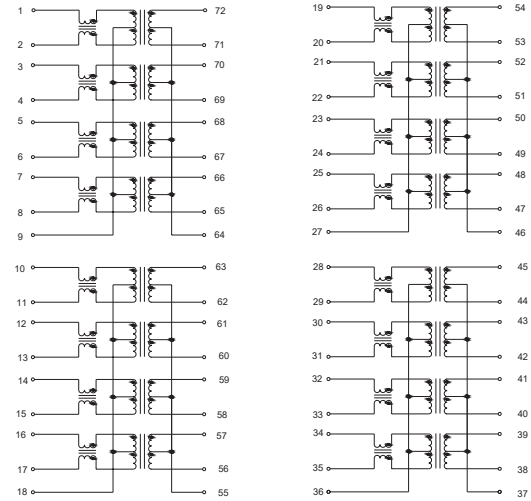


Schematic

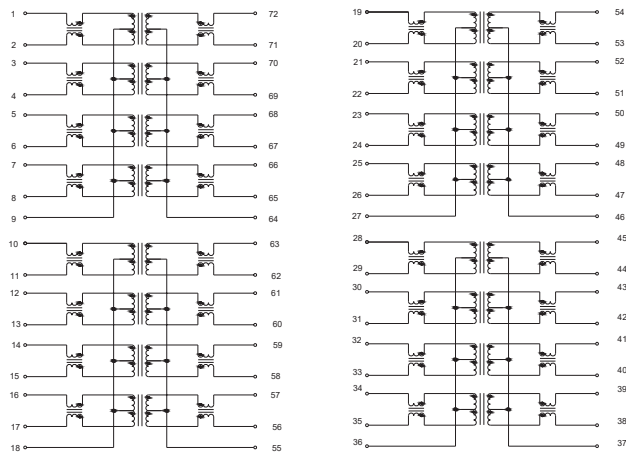
FAG7201DR,FAG7203DR



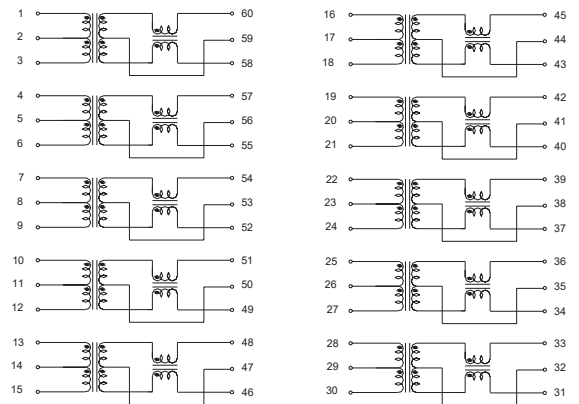
FAG7204DR,FAG7207DR



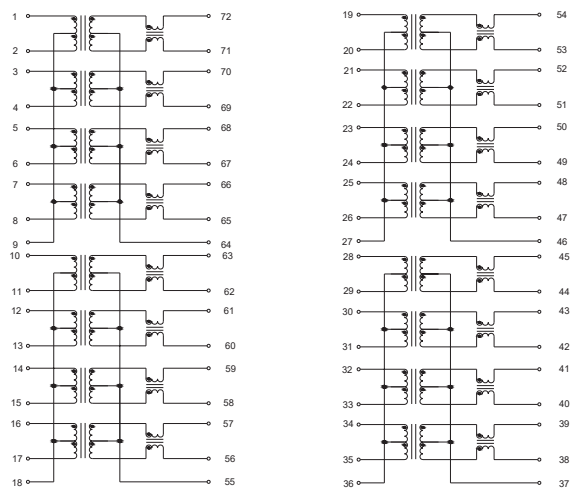
FAG7205DR, FAG7206DR



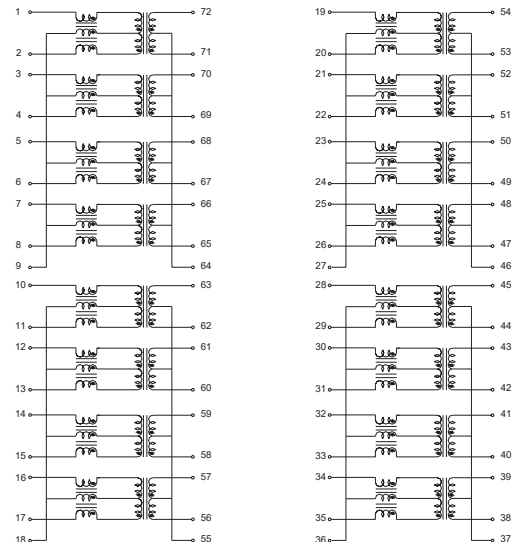
FAH7201DR



FAG7202DR,FAG7209DR,FAG7211DR



FAG7210DR



Quad port transformer modules 88Pin series

FEATURES

Cable interface for isolation and low common mode emissions
Compliant with IEEE 802.3 standard for 1000Base-T
RoHS compliant



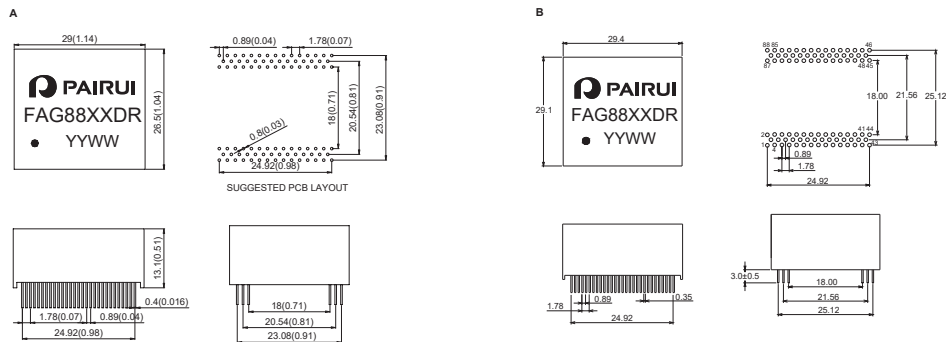
Electrical Specification@25°C Operating Temperature 0 to 70°C

Part Number	Insertion Loss (dB Max) 1-125MHz	Return Loss (dB Typical) MHz				CMRR (dB Min) MHz		Cross talk (dB Min) MHz		Isolation Voltage (Vrms Min)	Package
		1-30	40	50	60-80	0.1-60	60-100	0.1-60	60-100		
FAG8801DR	-1.0	-18	-14.4	-13.1	-12	-42	-40	-40	-38	1500	A
FAG8802DR*	-1.0	-18	-14.4	-13.1	-12	-42	-40	-40	-38	1500	B
FAG8803DR	-1.0	-18	-14.4	-13.1	-12	-42	-40	-40	-38	1500	A
FAG8804DR*	-1.0	-18	-14.4	-13.1	-12	-42	-40	-40	-38	1500	A

REMARK

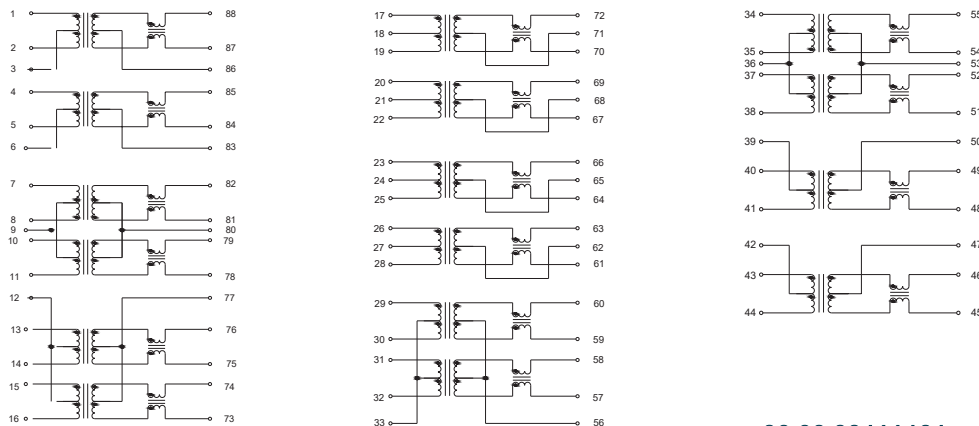
*:Compliant with IEEE 802.3af standard for 1000Base-T
*:Primary Inductance 350 uH MIN with 21 mA DC BIAS

Dimension : mm[inch] +/-0.25[0.01]



Schematic

FAUTG88T01,FAUTG88T02,FAUTG88T01P,FAUTG88T03P



Quad port transformer modules 90Pin series

FEATURES

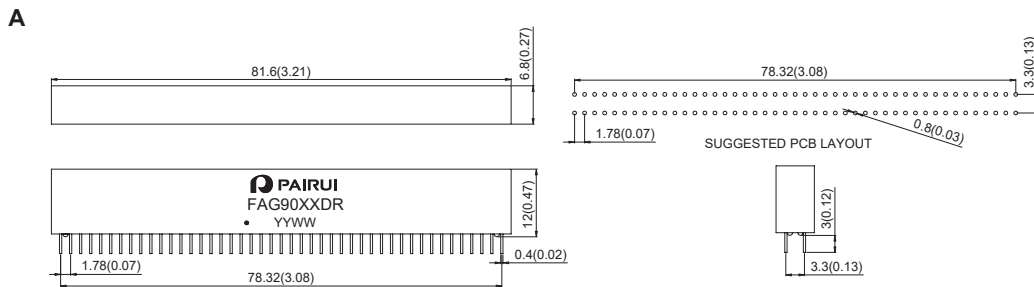
Cable interface for isolation and low common mode emissions
Compliant with IEEE 802.3 standard for 1000Base-T
RoHS compliant



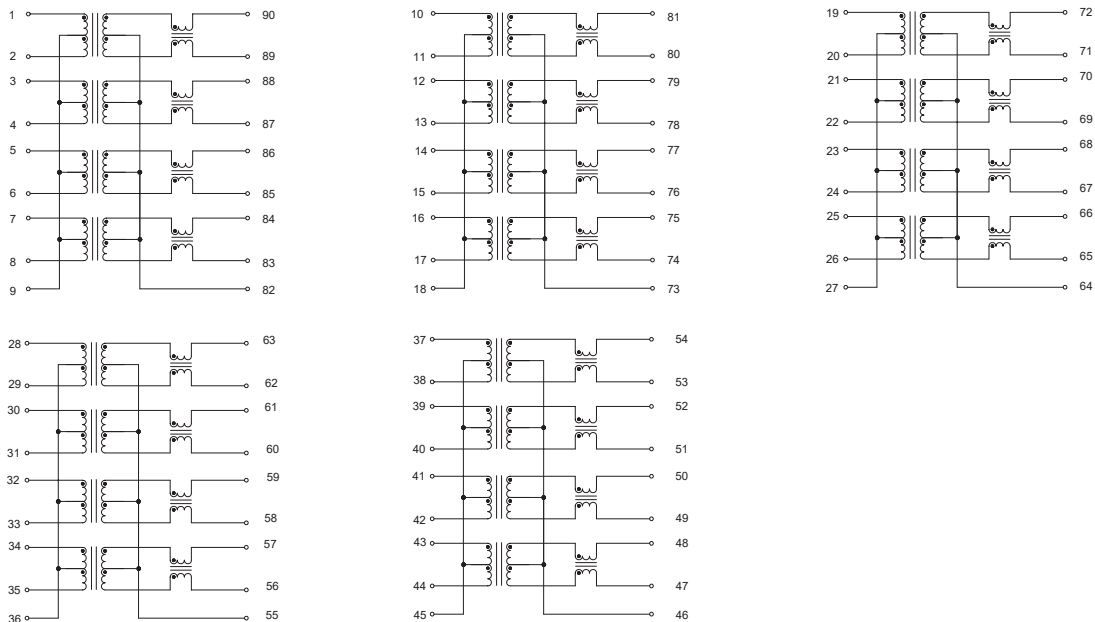
Electrical Specification@25°C Operating Temperature 0 to 70°C

Part Number	Insertion Loss (dB Max) 1-125MHz	Return Loss (dB Typical) MHz				CMRR (dB Min) MHz		Cross talk (dB Min) MHz		Isolation Voltage (Vrms Min)	Package
		1-30	40	50	60-80	0.1-60	60-100	0.1-60	60-100		
FAG9001DR	-1.0	-18	-14.4	-13.1	-12	-42	-40	-40	-38	1500	A

Dimension : mm[inch]+/-0.25[0.01]



Schematic



Five port transformer modules 96Pin series

FEATURES

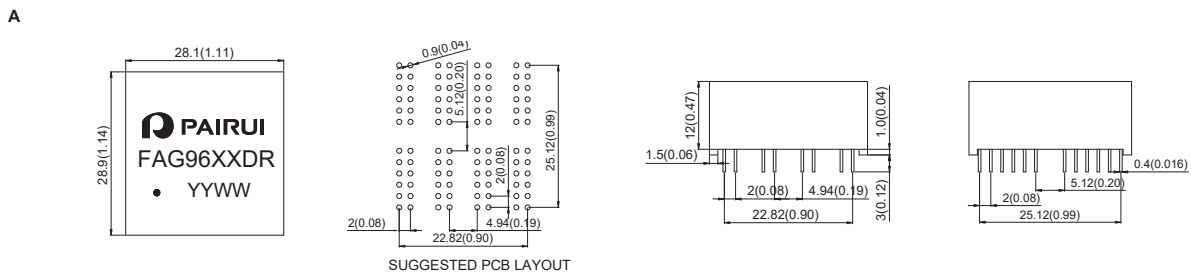
- Cable interface for isolation and low common mode emissions
- Compliant with IEEE 802.3 standard for 1000Base-T
- RoHS complian
- *Primary inductance:350uH Min.@100KHz 0.1Vrms 24mA



Electrical Specification@25°C Operating Temperature 0 to 70°C

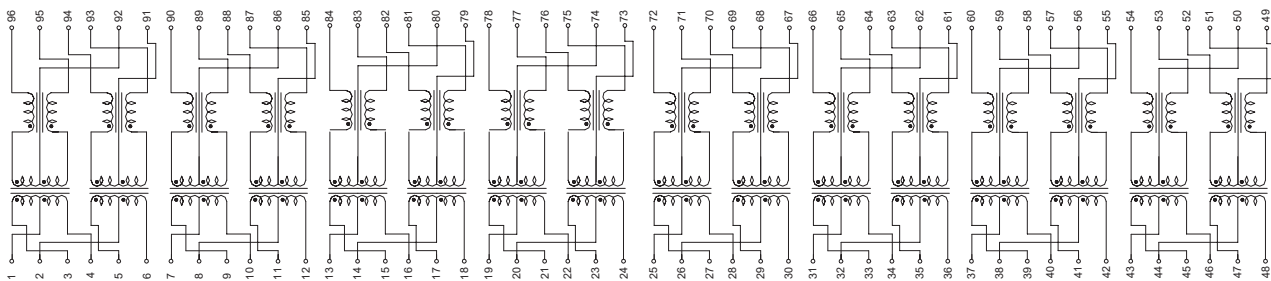
Part Number	Insertion Loss (dB Max) 1-125MHz	Return Loss (dB Typical) MHz				CMRR (dB Min) MHz		Cross talk (dB Min) MHz		Isolation Voltage (Vrms Min)	Package
		1-30	60	80	100	0.1-60	60-100	0.1-60	60-100		
FAG9601DR	-1.0	-18	-14.4	-12	-10	-42	-40	-40	-38	1500	A
FAG9602DR*	-1.0	-18	-14.4	-12	-10	-42	-40	-40	-38	1500	A

Dimension : mm[inch]+/-0.25[0.01]



Schematic

FAG9601DR,FAG9602DR



Single port transformer modules 12Pin series

FEATURES

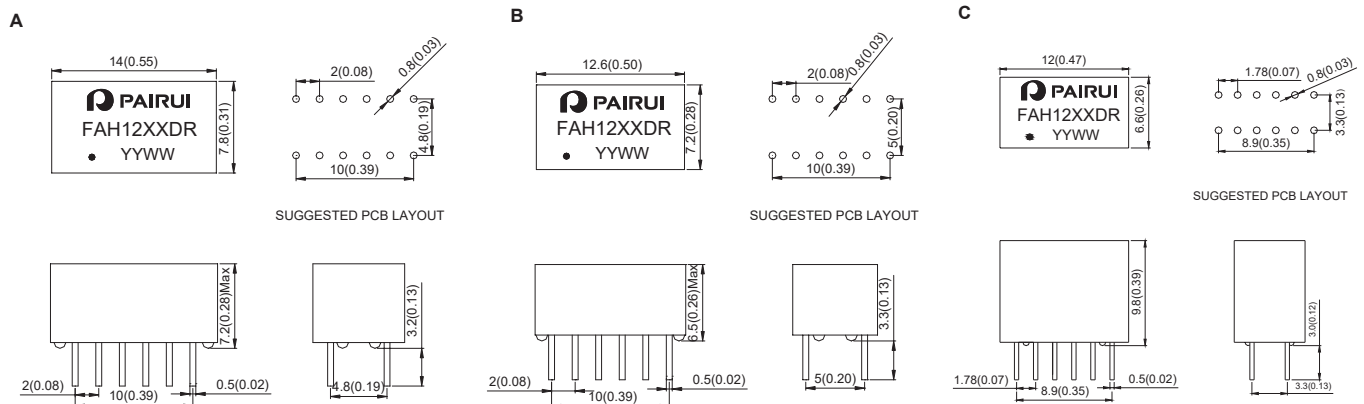
Compliant with IEEE 802.3 standard.
Primary inductance:350uH Min.@ 100KHz,0.1Vrms,8mA
RoHS compliant

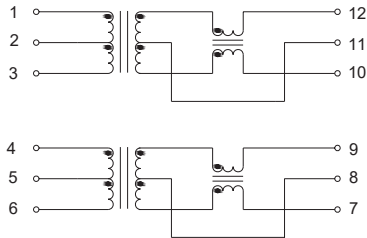
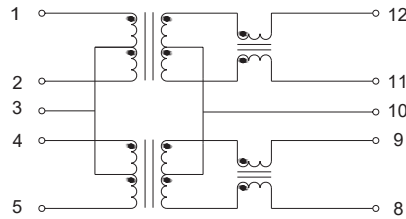
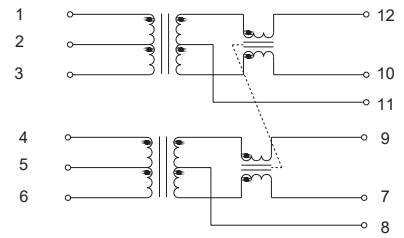
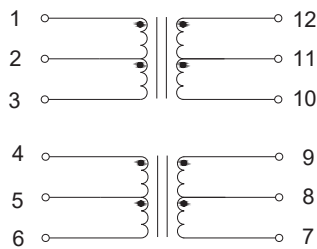
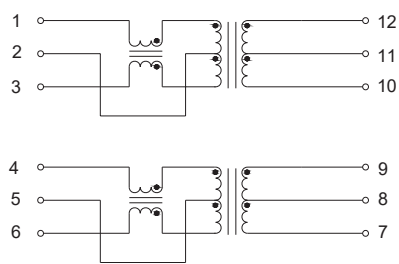
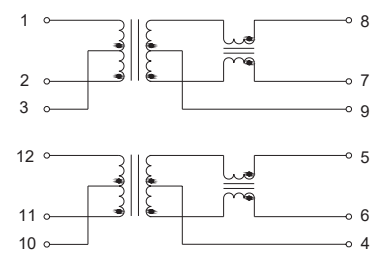
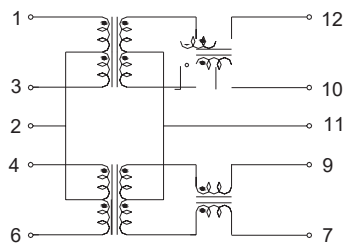
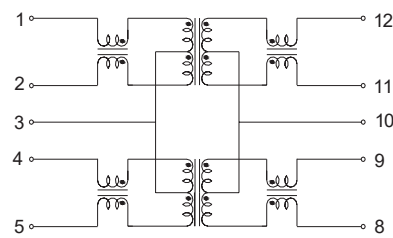
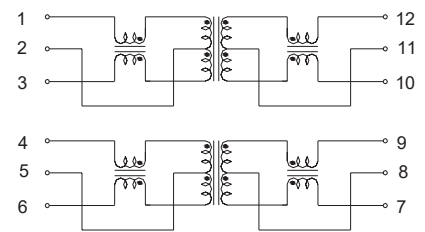


Electrical Specification@25°C Operating Temperature 0 to 70°C

Part Number	Insertion Loss (dB Max) 1-100MHz	Return Loss (dB Typical) MHz				CMRR (dB Min) MHz		Cross talk (dB Min) MHz		Isolation Voltage (Vrms Min)	Package
		1-30	40	50	60-80	0.1-60	60-100	0.1-60	60-100		
FAH1201DR	-1.0	-18	-14.4	-13.1	-12	-42	-40	-40	-38	1500	A
FAH1202DR	-1.0	-18	-14.4	-13.1	-12	-42	-40	-40	-38	1500	A
FAH1203DR	-1.0	-18	-14.4	-13.1	-12	-42	-40	-40	-38	1500	A
FAH1204DR	-1.0	-18	-14.4	-13.1	-12	-42	-40	-40	-38	1500	A
FAH1205DR	-1.0	-18	-14.4	-13.1	-12	-42	-40	-40	-38	1500	A
FAH1206DR	-1.0	-18	-14.4	-13.1	-12	-42	-40	-40	-38	1500	A
FAH1207DR	-1.0	-18	-14.4	-13.1	-12	-42	-40	-40	-38	1500	B
FAH1208DR	-1.0	-18	-14.4	-13.1	-12	-42	-40	-40	-38	1500	B
FAH1209DR	-1.0	-18	-14.4	-13.1	-12	-42	-40	-40	-38	1500	B
FAH1210DR	-1.0	-18	-14.4	-13.1	-12	-42	-40	-40	-38	1500	B
FAH1211DR	-1.0	-18	-14.4	-13.1	-12	-42	-40	-40	-38	1500	B
FAH1212DR	-1.0	-18	-14.4	-13.1	-12	-42	-40	-40	-38	1500	B
FAH1213DR	-1.0	-18	-14.4	-13.1	-12	-42	-40	-40	-38	1500	A
FAH1214DR	-1.0	-18	-14.4	-13.1	-12	-42	-40	-40	-38	1500	B
FAH1215DR	-1.0	-18	-14.4	-13.1	-12	-42	-40	-40	-38	1500	A
FAH1216DR	-1.0	-18	-14.4	-13.1	-12	-42	-40	-40	-38	1500	C

Dimension : mm[inch]+/-0.25[0.01]



Schematic**FAH1201DR, FAH1207DR, FAH1216DR****FAH1202DR, FAH1208DR****FAH1203DR, FAH1209DR****FAH1204DR, FAH1210DR****FAH1205DR, FAH1211DR****FAH1206DR, FAH1212DR****FAH1213DR****FAH1214DR****FAH1215DR**

Single port transformer modules 16Pin series

FEATURES

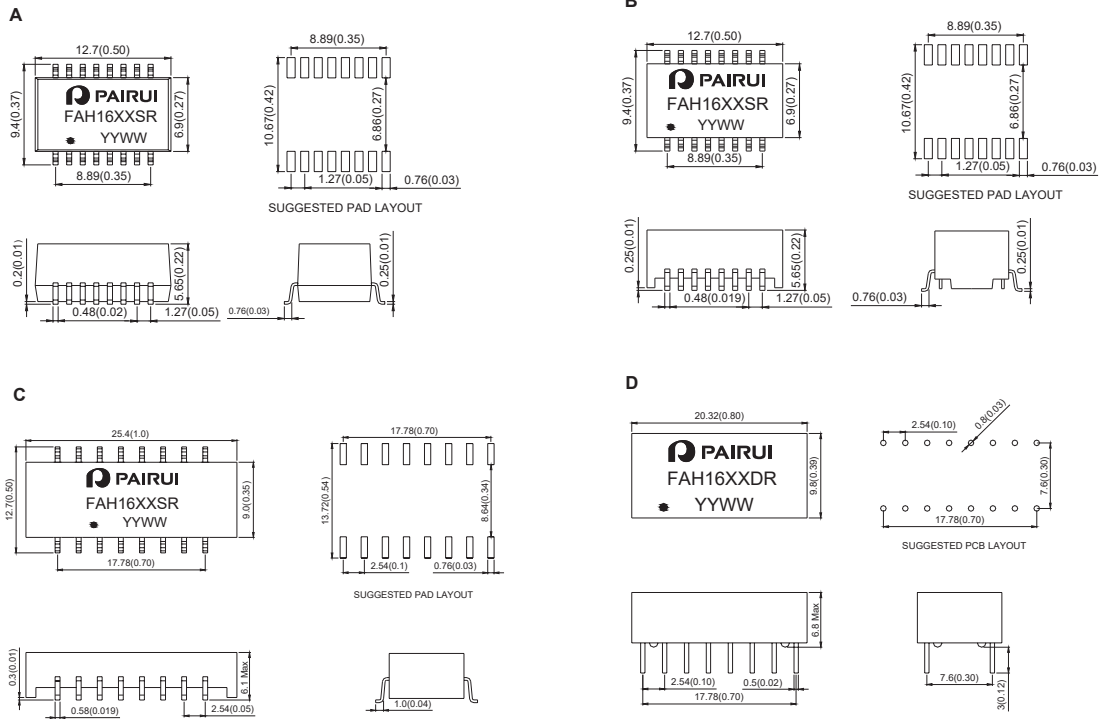
Compliant with IEEE 802.3 standard.
Primary inductance:350uH Min.@ 100KHz,0.1Vrms,8mA
RoHS compliant



Electrical Specification@25°C Operating Temperature 0 to 70°C

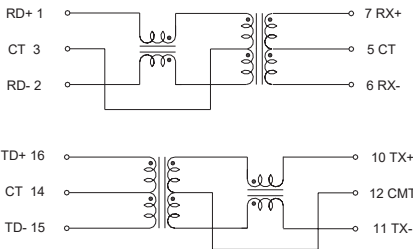
Part Number	Insertion Loss (dB Max) 1-100MHz	Return Loss (dB Typical) MHz				CMRR (dB Min) MHz		Cross talk (dB Min) MHz		Isolation Voltage (Vrms Min)	Package
		1-30	40	50	60-80	0.1-60	60-100	0.1-60	60-100		
FAH1601SR	-1.0	-18	-14.4	-13.1	-12	-42	-40	-40	-38	1500	A
FAH1602SR	-1.0	-18	-14.4	-13.1	-12	-42	-40	-40	-38	1500	A
FAH1603SR	-1.0	-18	-14.4	-13.1	-12	-42	-40	-40	-38	1500	A
FAH1604SR	-1.0	-18	-14.4	-13.1	-12	-42	-40	-40	-38	1500	B
FAH1605SR	-1.0	-18	-14.4	-13.1	-12	-42	-40	-40	-38	1500	B
FAH1606SR	-1.0	-18	-14.4	-13.1	-12	-42	-40	-40	-38	1500	B
FAH1607SR	-1.0	-18	-14.4	-13.1	-12	-42	-40	-40	-38	1500	B
FAH1608SR	-1.0	-18	-14.4	-13.1	-12	-42	-40	-40	-38	1500	B
FAH1609SR	-1.0	-18	-14.4	-13.1	-12	-42	-40	-40	-38	1500	B
FAH1610SR	-1.0	-18	-14.4	-13.1	-12	-42	-40	-40	-38	1500	B
FAH1611SR	-1.0	-18	-14.4	-13.1	-12	-42	-40	-40	-38	1500	B
FAH1612SR	-1.0	-18	-14.4	-13.1	-12	-42	-40	-40	-38	1500	C
FAH1613SR	-1.0	-18	-14.4	-13.1	-12	-42	-40	-40	-38	1500	C
FAH1614SR	-1.0	-18	-14.4	-13.1	-12	-42	-40	-40	-38	1500	C
FAH1601DR	-1.0	-18	-14.4	-13.1	-12	-42	-40	-40	-38	1500	D
FAH1602DR	-1.0	-18	-14.4	-13.1	-12	-42	-40	-40	-38	1500	D
FAH1603DR	-1.0	-18	-14.4	-13.1	-12	-42	-40	-40	-38	1500	D
FAH1604DR	-1.0	-18	-14.4	-13.1	-12	-42	-40	-40	-38	1500	D
FAH1605DR	-1.0	-18	-14.4	-13.1	-12	-42	-40	-40	-38	1500	D
FAH1606DR	-1.0	-18	-14.4	-13.1	-12	-42	-40	-40	-38	1500	D
FAH1607DR	-1.0	-18	-14.4	-13.1	-12	-42	-40	-40	-38	1500	D
FAH1608DR	-1.0	-18	-14.4	-13.1	-12	-42	-40	-40	-38	1500	D
FAH1609DR	-1.0	-18	-14.4	-13.1	-12	-42	-40	-40	-38	1500	D
FAH1610DR	-1.0	-18	-14.4	-13.1	-12	-42	-40	-40	-38	1500	D
FAH1611DR	-1.0	-18	-14.4	-13.1	-12	-42	-40	-40	-38	1500	D
FAH1612DR	-1.0	-18	-14.4	-13.1	-12	-42	-40	-40	-38	1500	D
FAH1613DR	-1.0	-18	-14.4	-13.1	-12	-42	-40	-40	-38	1500	D
FAH1614DR	-1.0	-18	-14.4	-13.1	-12	-42	-40	-40	-38	1500	D

Dimension : mm[inch] +/-0.25[0.01]

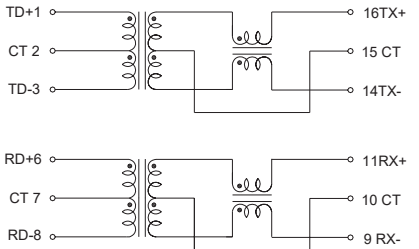


Schematic

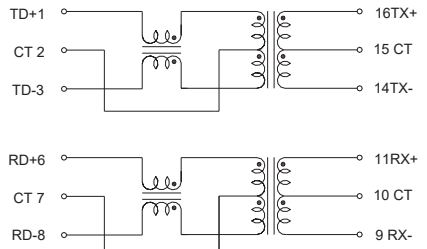
FAH1607SR,FAH1609SR,FAH1613SR, FAH1602DR



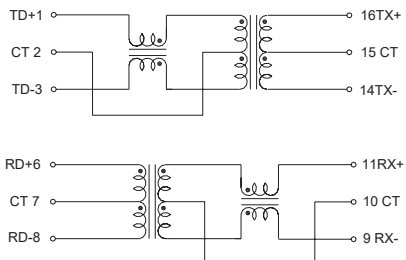
FAH1601SR,FAH1612SR, FAH1601DR



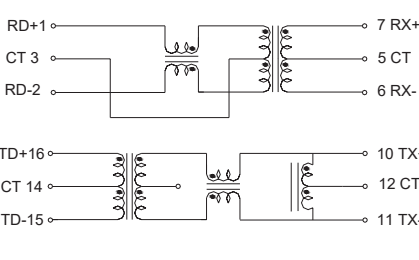
FAH1602SR



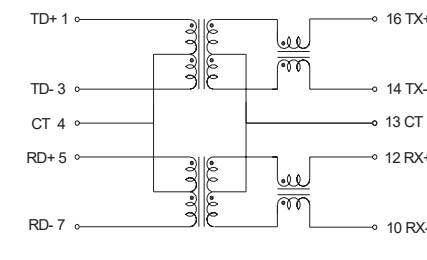
FAH1604SR,FAH1611SR,FAH1606DR



FAH1605SR,FAH1610SR,FAH1614SR,FAH1608DR

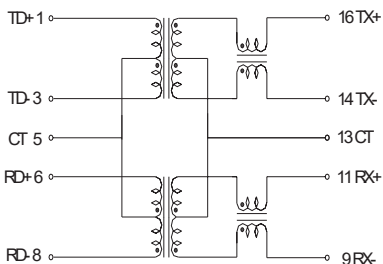


FAH1606SR,FAH1603DR

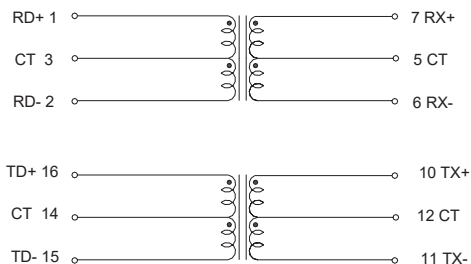


Schematic

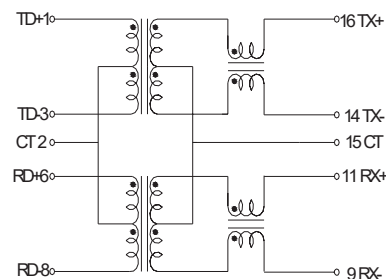
FAH1603SR, FAH16012DR



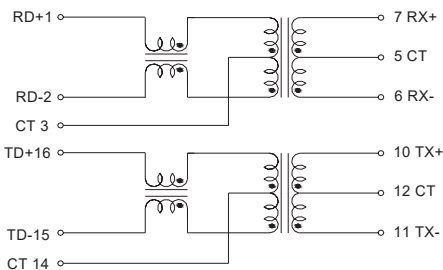
FAH1604DR



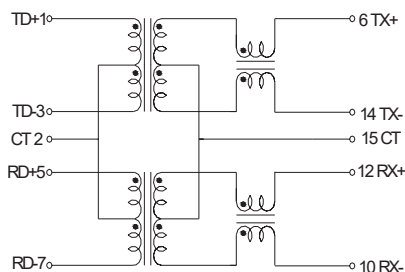
FAH1605DR



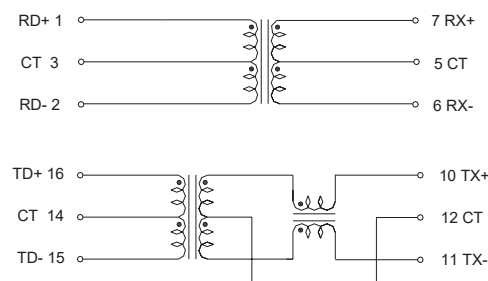
FAH1607DR



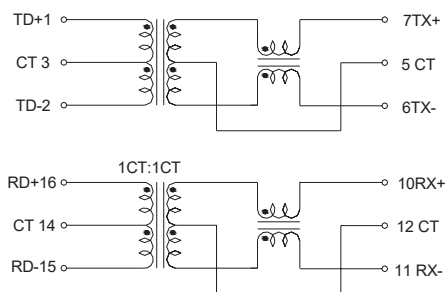
FAH1608SR, FAH1609DR



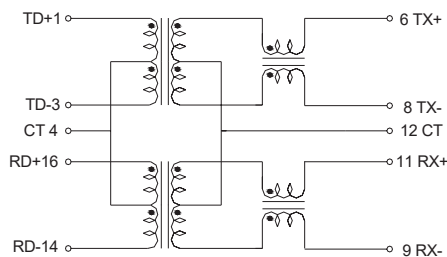
FAH1610DR



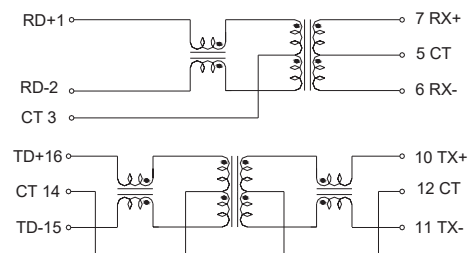
FAH1611DR



FAH1613DR



FAH1614DR



Transformer Module 16Pin series

FEATURES

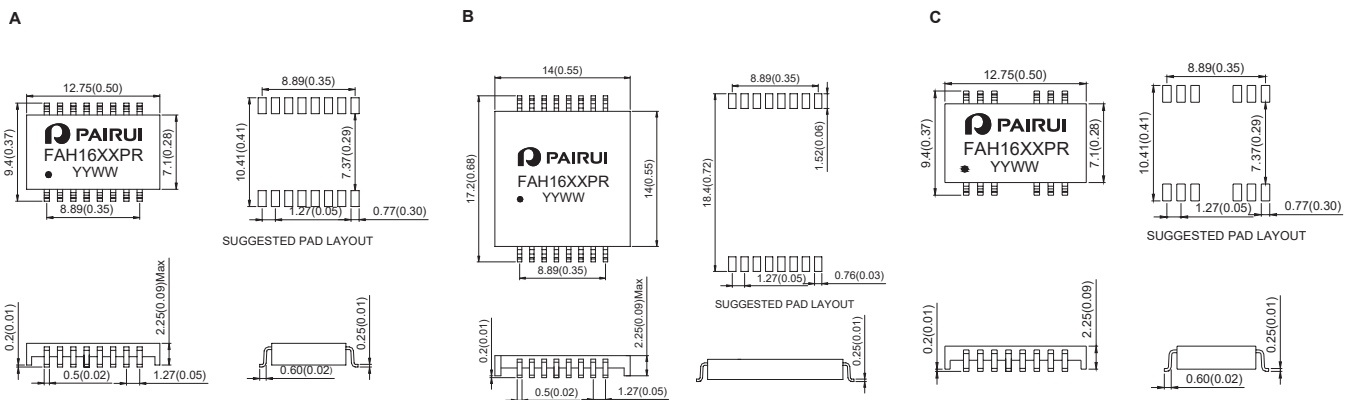
Compliant with IEEE 802.3 standard.
Small Package
RoHS compliant



Electrical Specification@25°C Operating Temperature 0 to 70°C

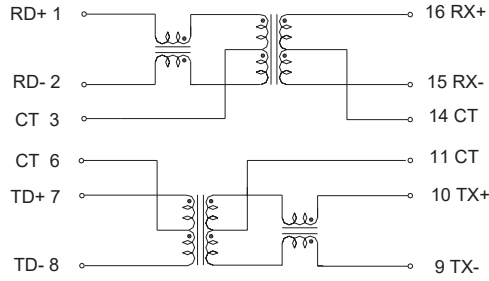
Part Number	Insertion Loss (dB Max) 1-100MHz	Return Loss (dB Typical) MHz				CMRR (dB Min) MHz		Cross talk (dB Min) MHz		Isolation Voltage (Vrms Min)	Primary Inductance (uH Min) 100KHZ,0.1V	Package
		1-30	40	50	60-80	0.1-60	60-100	0.1-60	60-100			
FAH1601PR	-1.0	-18	-14.4	-13.1	-12	-42	-40	-40	-38	1500	350	C
FAH1602PR	-1.0	-18	-14.4	-13.1	-12	-42	-40	-40	-38	1500	350	C
FAH1603PR	-1.0	-18	-14.4	-13.1	-12	-42	-40	-40	-38	1500	350	B
FAH1604PR	-1.0	-18	-14.4	-13.1	-12	-42	-40	-40	-38	1500	350	B
FAH1605PR	-1.0	-18	-14.4	-13.1	-12	-42	-40	-40	-38	1500	350	A
FAH1606PR	-1.0	-18	-14.4	-13.1	-12	-42	-40	-40	-38	1500	350	A
FAH1607PR	-1.0	-18	-14.4	-13.1	-12	-42	-40	-40	-38	1500	350 8mA DC Bias	A
FAH1608PR	-1.0	-18	-14.4	-13.1	-12	-42	-40	-40	-38	1500	350 8mA DC Bias	B

Dimension : mm [inch] +/- 0.25 [0.01]

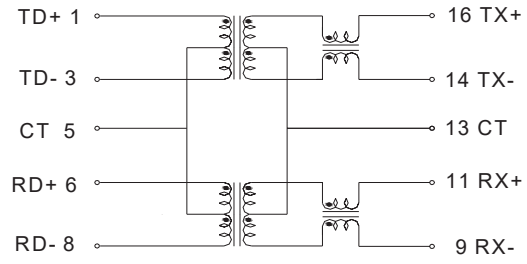


Schematic

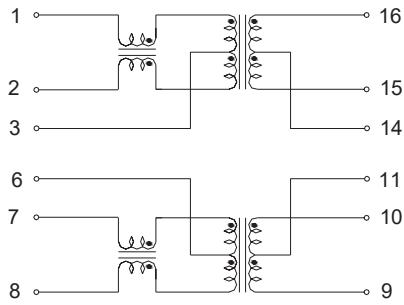
FAH1601PR,FAH1603PR,FAH1607PR,FAH1608PR



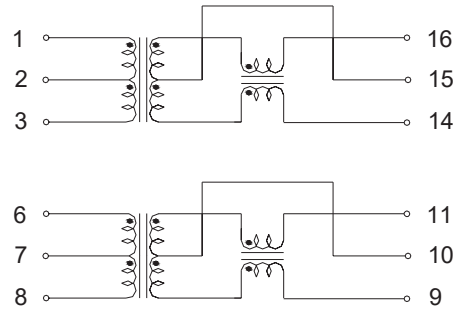
FAH1604PR,FAH1605PR



FAH1606PR



FAH1602PR



Dual port transformer modules 20Pin series

FEATURES

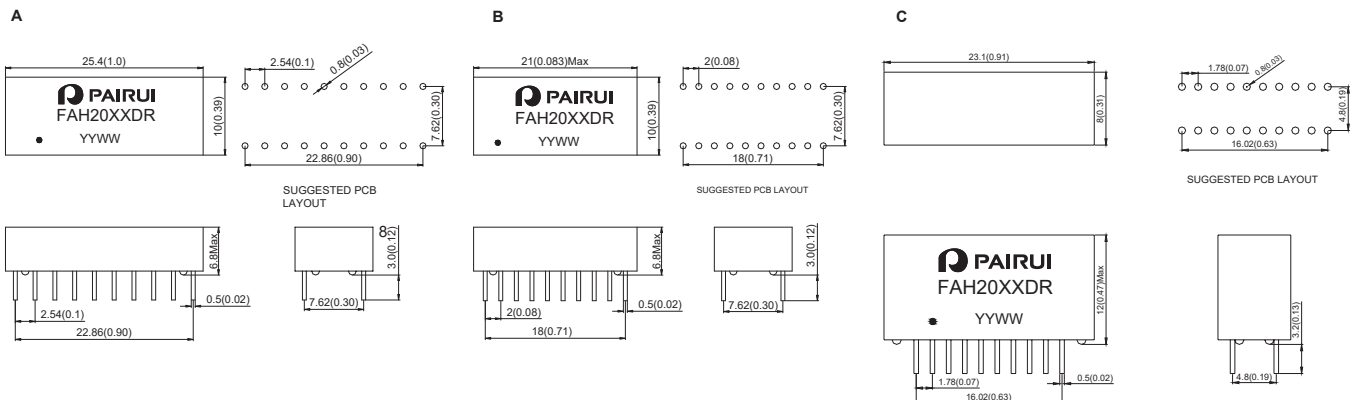
Compliant with IEEE 802.3 standard.
Designed for Auto MDI/MDIX Applications
Primary inductance:350uH Min.@ 100KHz,0.1Vrms,8mA
RoHS compliant



Electrical Specification@25°C Operating Temperature 0 to 70°C

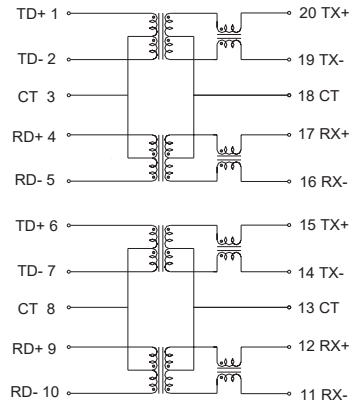
Part Number	Insertion Loss (dB Max) 1-100MHz	Return Loss (dB Typical) MHz				CMRR (dB Min) MHz		Cross talk (dB Min) MHz		Isolation Voltage (Vrms Min)	Package
		1-30	40	50	60-80	0.1-60	60-100	0.1-60	60-100		
FAH2001DR	-1.0	-18	-14.4	-13.1	-12	-42	-40	-40	-38	1500	A
FAH2002DR	-1.0	-18	-14.4	-13.1	-12	-42	-40	-40	-38	1500	B
FAH2003DR	-1.0	-18	-14.4	-13.1	-12	-42	-40	-40	-38	1500	A
FAH2004DR	-1.0	-18	-14.4	-13.1	-12	-42	-40	-40	-38	1500	A
FAH2005DR	-1.0	-18	-14.4	-13.1	-12	-42	-40	-40	-38	1500	A
FAH2006DR	-1.0	-18	-14.4	-13.1	-12	-42	-40	-40	-38	1500	B
FAH2007DR	-1.0	-18	-14.4	-13.1	-12	-42	-40	-40	-38	1500	B
FAH2008DR	-1.0	-18	-14.4	-13.1	-12	-42	-40	-40	-38	1500	B
FAH2009DR	-1.0	-18	-14.4	-13.1	-12	-42	-40	-40	-38	1500	A
FAH2010DR	-1.0	-18	-14.4	-13.1	-12	-42	-40	-40	-38	1500	A
FAH2011DR	-1.0	-18	-14.4	-13.1	-12	-42	-40	-40	-38	1500	A
FAH2012DR	-1.0	-18	-14.4	-13.1	-12	-42	-40	-40	-38	1500	A
FAH2013DR	-1.0	-18	-14.4	-13.1	-12	-42	-40	-40	-38	1500	A
FAH2014DR	-1.0	-18	-14.4	-13.1	-12	-42	-40	-40	-38	1500	C
FAH2015DR	-1.0	-18	-14.4	-13.1	-12	-42	-40	-40	-38	1500	C
FAH2016DR	-1.0	-18	-14.4	-13.1	-12	-42	-40	-40	-38	1500	B
FAH2017DR	-1.0	-18	-14.4	-13.1	-12	-42	-40	-40	-38	1500	B

Dimension : mm[inch]+/-0.25[0.01]

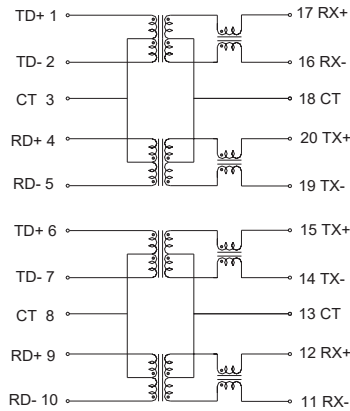


Schematic

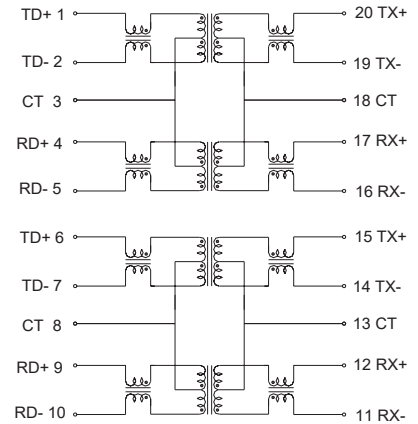
FAH2001DR, FAH2002DR



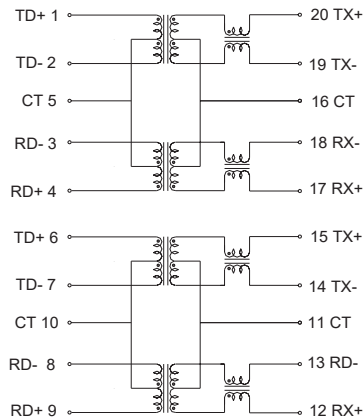
FAH2005DR, FAH2006DR



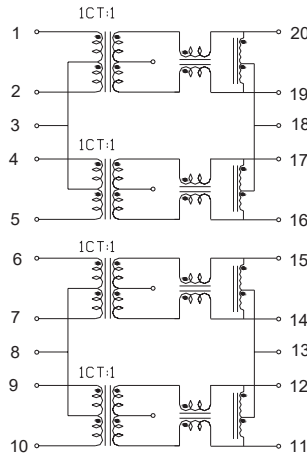
FAH2003DR, FAH2007DR



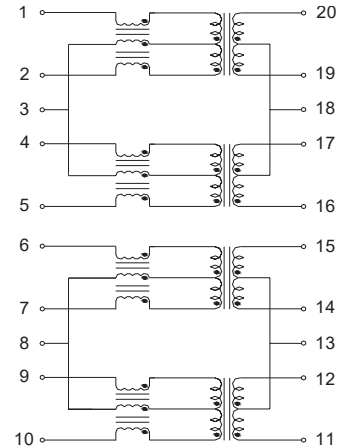
FAH2004DR, FAH2008DR, FAH2014DR



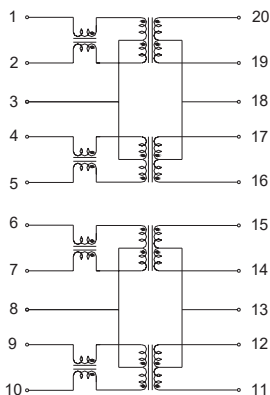
FAH2010DR



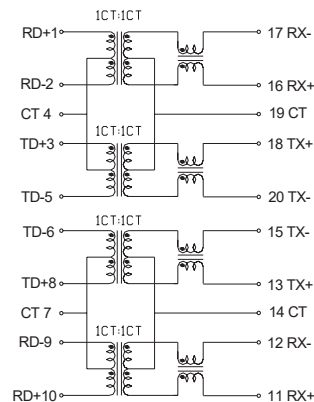
FAH2011DR



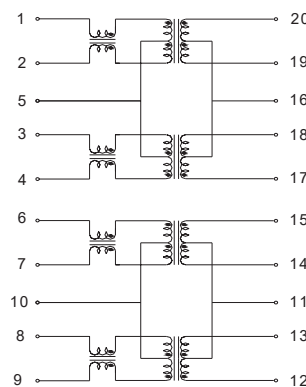
FAH2012DR, FAH2016DR



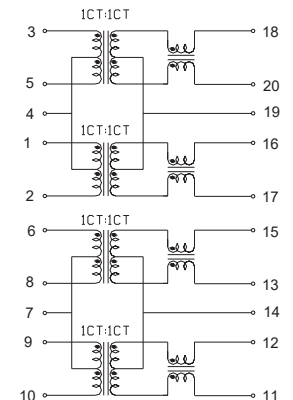
FAH2013DR



FAH2015DR



FAH2009DR, FAH2017DR



Quad port transformer modules 40Pin series

FEATURES

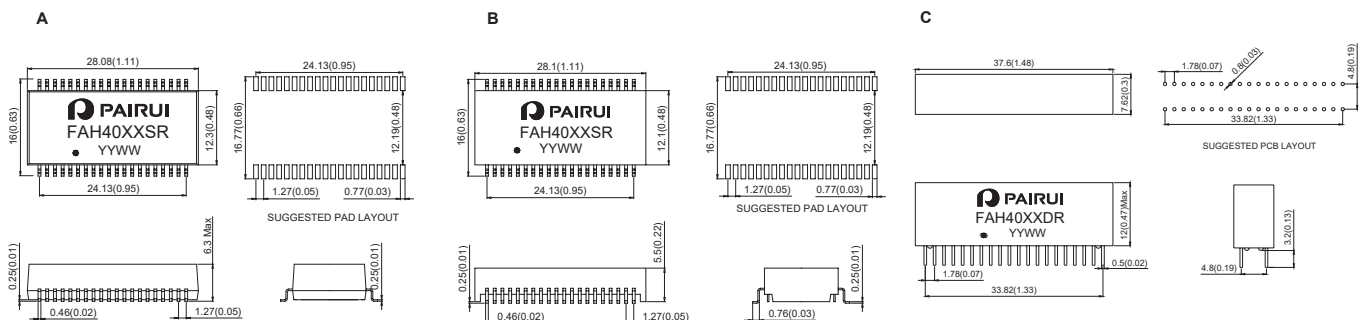
Compliant with IEEE 802.3 standard.
Designed for multiport repeater & Ethernet Switching Hub application
Primary inductance:350uH Min.@ 100KHz,0.1Vrms,8mA
RoHS compliant



Electrical Specification@25°C Operating Temperature 0 to 70°C

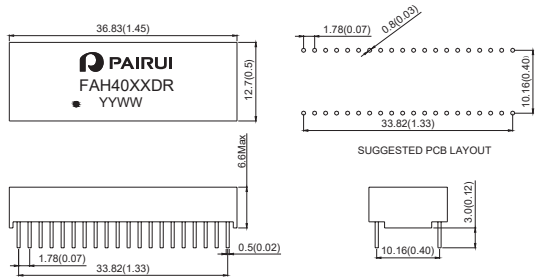
Part Number	Insertion Loss (dB Max) 1-100MHz	Return Loss (dB Typical) MHz				CMRR (dB Min) MHz		Cross talk (dB Min) MHz		Isolation Voltage (Vrms Min)	Package
		1-30	40	50	60-80	0.1-60	60-100	0.1-60	60-100		
FAH4001SR	-1.0	-18	-14.4	-13.1	-12	-42	-40	-40	-38	1500	B
FAH4002SR	-1.0	-18	-14.4	-13.1	-12	-42	-40	-40	-38	1500	B
FAH4003SR	-1.0	-18	-14.4	-13.1	-12	-42	-40	-40	-38	1500	A
FAH4004SR	-1.0	-18	-14.4	-13.1	-12	-42	-40	-40	-38	1500	A
FAH4005SR	-1.0	-18	-14.4	-13.1	-12	-42	-40	-40	-38	1500	B
FAH4006SR	-1.0	-18	-14.4	-13.1	-12	-42	-40	-40	-38	1500	B
FAH4007SR	-1.0	-18	-14.4	-13.1	-12	-42	-40	-40	-38	1500	B
FAH4001DR	-1.0	-18	-14.4	-13.1	-12	-42	-40	-40	-38	1500	C
FAH4002DR	-1.0	-18	-14.4	-13.1	-12	-42	-40	-40	-38	1500	C
FAH4003DR	-1.0	-18	-14.4	-13.1	-12	-42	-40	-40	-38	1500	C
FAH4004DR	-1.0	-18	-14.4	-13.1	-12	-42	-40	-40	-38	1500	C
FAH4005DR	-1.0	-18	-14.4	-13.1	-12	-42	-40	-40	-38	1500	C
FAH4006DR	-1.0	-18	-14.4	-13.1	-12	-42	-40	-40	-38	1500	D
FAH4007DR	-1.0	-18	-14.4	-13.1	-12	-42	-40	-40	-38	1500	D
FAH4008DR	-1.0	-18	-14.4	-13.1	-12	-42	-40	-40	-38	1500	D
FAH4009DR	-1.0	-18	-14.4	-13.1	-12	-42	-40	-40	-38	1500	D
FAH4010DR	-1.0	-18	-14.4	-13.1	-12	-42	-40	-40	-38	1500	C
FAH4011DR	-1.0	-18	-14.4	-13.1	-12	-42	-40	-40	-38	1500	E
FAH4012DR	-1.0	-18	-14.4	-13.1	-12	-42	-40	-40	-38	1500	C

Dimension : mm[inch]+/-0.25[0.01]

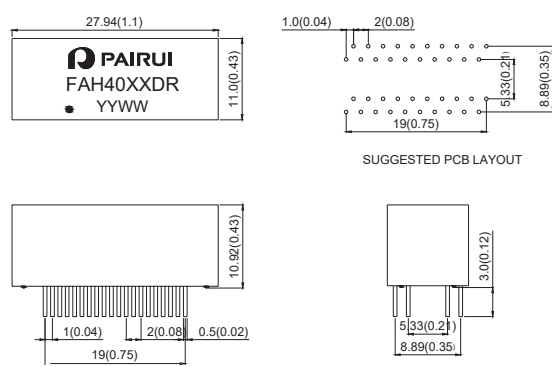


Dimension : mm[inch]+/-0.25[0.01]

D

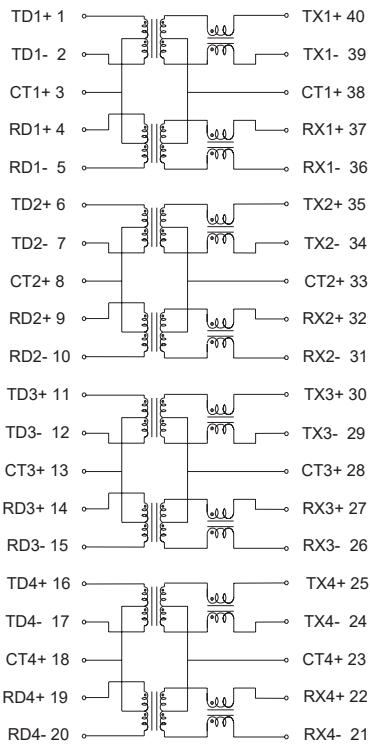


E

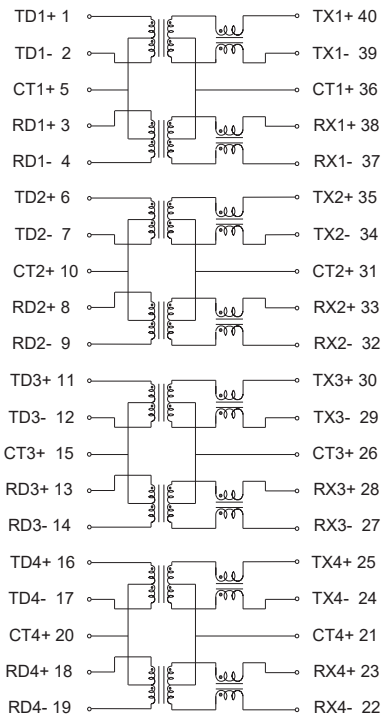


Schematic

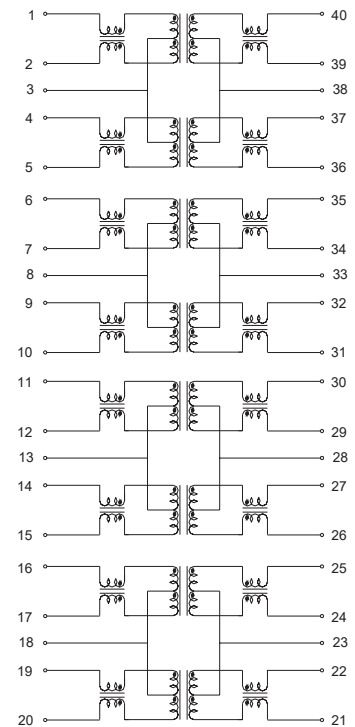
FAH4001SR, FAH4003SR,FAH4002DR, FAH4007DR,FAH4011DR



FAH4005SR,FAH4001DR

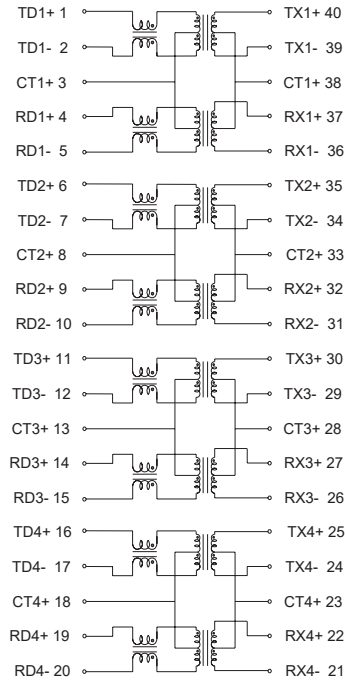


FAH4006DR

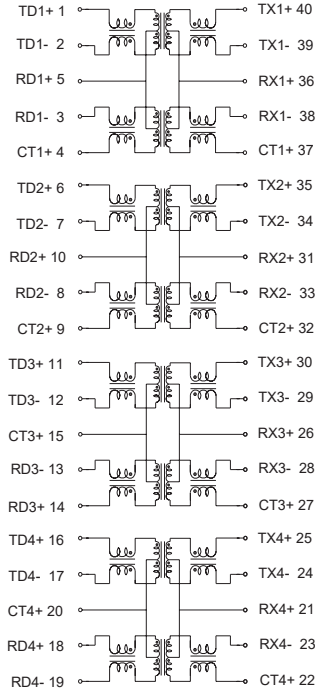


Schematic

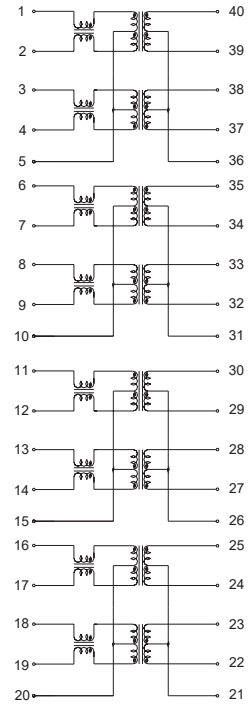
**FAH4002SR,FAH4004SR,FAH4006DR,
FAH4008DR**



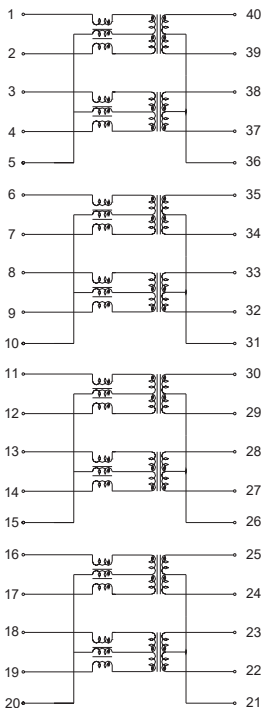
**FAH4006SR,FAH4004DR,
FAH4009DR**



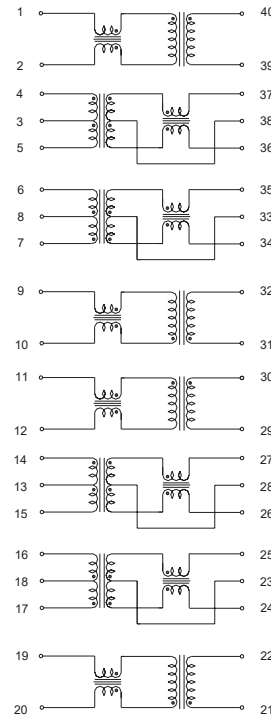
FAH4010DR



FAH4012DR



FAH4007SR,FAH4005DR



T1/CEPT/ISDN-Pri Module

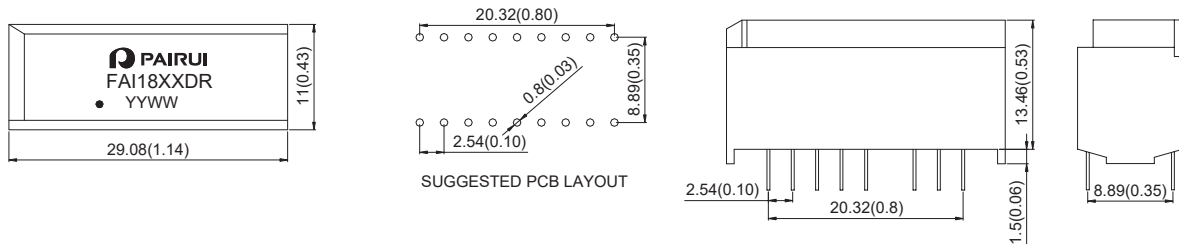
FEATURES

- Compliant with of CCITT 1.430 standard
- Compatible with industry standard footprints
- Developed for enhanced EMC performance
- Isolation:1500Vrms.
- RoHS compliant

Electrical Specification@25°C Operating Temperature 0 to 70°C

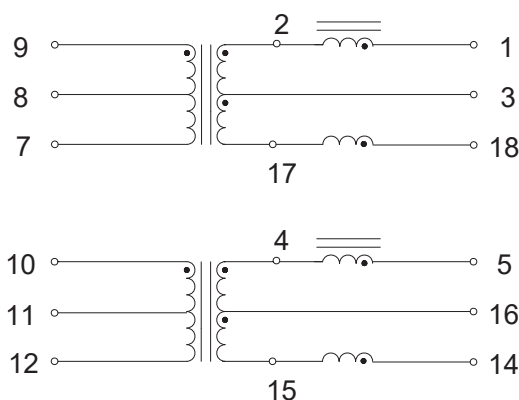
Part Number	Transformer							Choke		ΔIdc mA Max	Secondary Pins
	Ratio+2% Pri:Sec	OCL Pri (mH Min)	LL Sec (uH Max)	C _{ww} (pF Max)	CDPri (pF Max)	DCR Pri (Ω ±25%)	DCRSec (Ω Max)	OCL (mH Min)	DCR Ω		
FAI1801DR	1CT:1CT	30	10	150	100	3.2	3.2(+25%)	4.7	1.2	5	9-7,10-12
FAI1802DR	1CT:2CT	30	30	150	100	3.2	5.4(+25%)	4.7	1.2	5	9-7,10-12
FAI1803DR	1CT:2.5CT	30	30	150	100	3.2	9	4.7	1.2	5	9-7,10-12
FAI1804DR	1CT:2	30	30	150	100	3.2	5.4(+25%)	4.7	1.2	5	9-10,8-11

Dimension : mm[inch] +/-0.25[0.01]

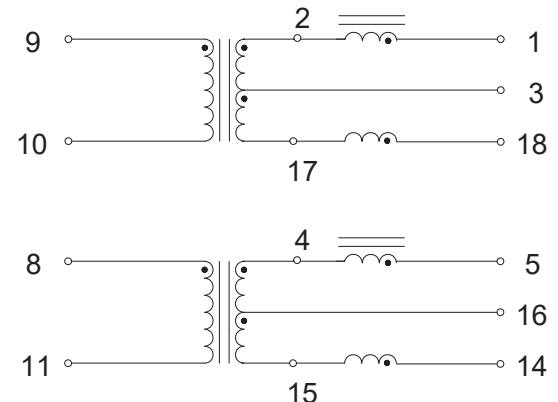


Schematic

FAI1801DR,FAI1802DR,FAI1803DR



FAI1804DR



T1/CEPT/ISDN-Pri Module

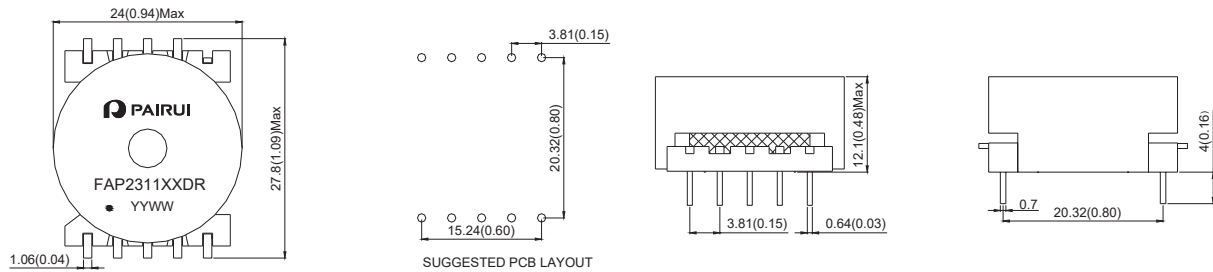
FEATURES

Meet IEC950
 Custom Variations
 RoHS compliant

Electrical Specification@25°C Operating Temperature 0 to 70°C

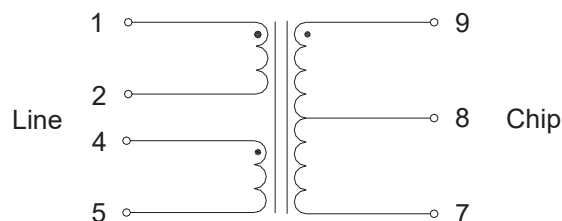
Part Number	Turn Ratio @10KHz 1Vrms, Line:Chip	OCL @10KHz 0.1Vrms Line	Leakage Inductance @100KHz, 0.1Vrm 9-7 with	DC Resistance		Isolation Voltage (Vrms)
		(Idc=60mA)	1&2&4&5 shorted	Line	Chip	
FAP231101DR	1.5:1.0± 3%	25.65-29.0mH	85uH Max	20.0ΩMax	3.0ΩMax	2000
FAP231102DR	1.25:1.0± 3%	26.5-29.5mH	85uH Max	12.4ΩMax	7.0ΩMax	2000

Dimension : mm[inch]+/-0.25[0.01]

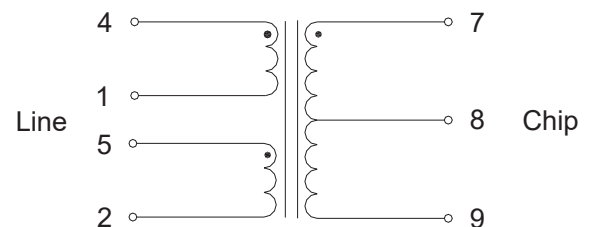


Schematic

FAP231101DR



FAP231102DR



T1/CEPT/ISDN-Pri Module

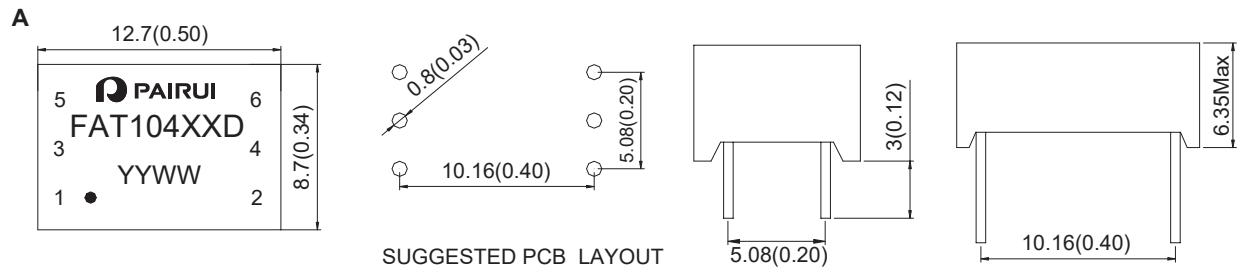
FEATURES

Compliant with CCITT&FCC standard.
 Provide 1500Vrms isolation
 RoHS compliant

Electrical Specification@25°C Operating Temperature 0 to 70°C

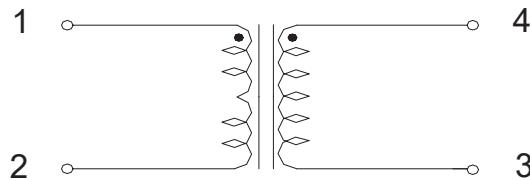
Part Number	Turn Ratio	OCL (mH Min)	LL (uH Max)	Cww (pF Max)	DCR Pri (Ohm Max)	DCR Sec (Ohm Max)	Primary pins	Package
FAT10401D	1CT:1CT	2.5	0.5	40	0.7	0.7	1-2	A

Dimension : mm[inch]+/-0.25[0.01]



Schematic

FAT10401D



T1/CEPT/ISDN-Pri Module

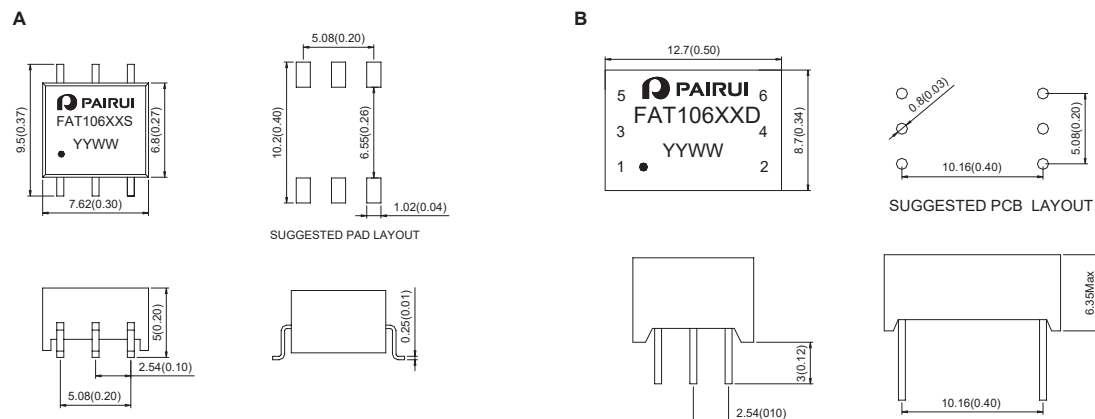
FEATURES

Compliant with CCITT&FCC standard.
 Provide 1500Vrms isolation
 RoHS compliant

Electrical Specification@25°C Operating Temperature 0 to 70°C

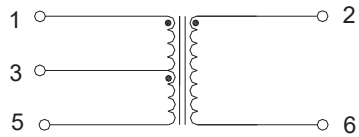
Part Number	Turn Ratio	OCL (mH Min)	LL (uH Max)	C _{ww} (pF Max)	DCR Pri (Ohm Max)	DCR Sec (Ohm Max)	Primary pins	Package
FAT10601S	1:2CT	1.2	0.5	40	0.7	1.3	2-6	A
FAT10602S	1.26CS:1	1.5	0.8	25	0.7	0.5	5-6	A
FAT10603S	1:1.15CT	1.5	0.6	35	0.7	0.9	2-6	A
FAT10604S	1:1/1.26	1.5	0.4	35	0.7	0.9	1-2	A
FAT10605S	1:1.36CT	1.2	0.8	35	0.7	0.9	2-6	A
FAT10606S	1CT:1CT	1.2	0.8	35	0.8	0.8	1-5	A
FAT10607S	1CT:2CT	1.2	0.6	25	1	2	1-3	A
FAT10608S	1:1	1.2	0.6	25	1	2	1-3	A
FAT10609S	1:1	1.2	0.6	25	1	2	1-2	A
FAT10601D	1:2CT	1.2	0.5	45	0.7	0.7	2-6	B
FAT10602D	1:1.36CT	1.2	0.8	45	0.7	0.7	2-6	B
FAT10603D	1:1.15CT	1.2	0.8	35	0.7	0.7	2-6	B
FAT10604D	1:1/1.26	1	0.7	30	0.6	0.6	1-2	B
FAT10605D	1.26CS:1	0.3	0.6	30	0.8	0.6	5-6	B
FAT10606D	2CT:1	1	1	35	1.6	0.8	5-6	B
FAT10607D	1:1	1	1.1	35	1.1	1.1	1-3	B
FAT10608D	1CT:1	1.2	0.8	35	0.7	0.7	1-5	B
FAT10609D	1CT:2CT	1.2	0.8	50	1	2	1-5	B

Dimension : mm[inch] +/-0.25[0.01]

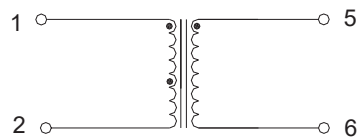


Schematic

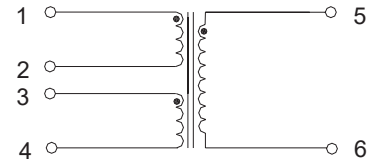
**FAT10601S,FAT10603S,FAT10605S
FAT10601D,FAT10602D,FAT10603D**



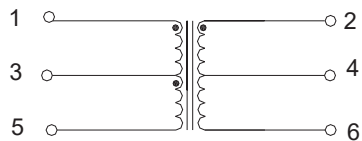
FAT10609S,FAT10604D



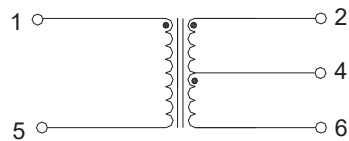
FAT10602S,FAT10605D



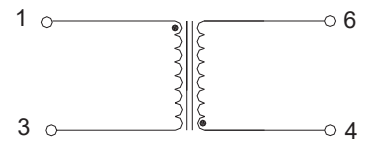
FAT10606S,FAT10609D



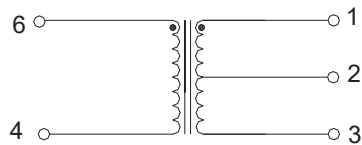
FAT10606D,FAT10608D



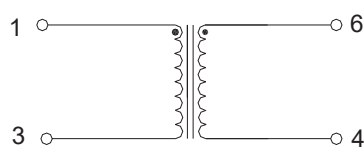
FAT10607D



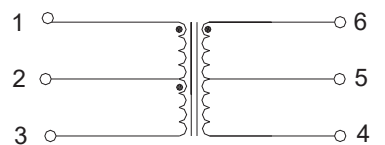
FAT10607D



FAT10608S



FAT10607S



T1/CEPT/ISDN-Pri Module

FEATURES

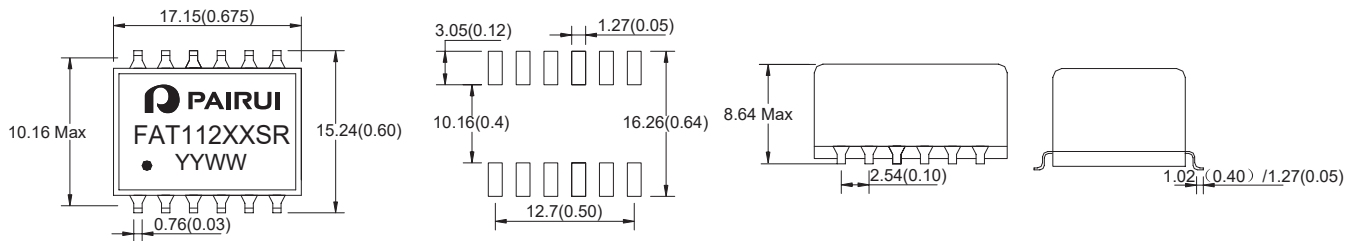
Compliant with CCITT&FCC standard.
Provide 1500Vrms isolation
RoHS compliant

Electrical Specification@25°C Operating Temperature 0 to 70°C

Part Number	Turn Ratio	OCL (mH Min)	LL (uH Max)	C _{ww} (pF Max)	DCR Pri (Ohm Max)	DCR Sec (Ohm Max)	Primary pins	Package
FAT11201SR	1:1.15CT&1CT:2CT	1.60&1.60	0.80&0.80	60&50	1.0&1.0	1.20&2.0	12-10,4-6	A
FAT11202SR	1:1:1.26&1:2CT	1.20&1.20	0.80&0.80	50&60	1.0&1.0	1.10&1.70	12-10,4-6	A
FAT11203SR	1CT:1.15CT&1CT:1.15CT	1.20&1.20	0.80&0.80	50&50	1.20&1.20	1.40&1.40	1-3,4-6	A
FAT11204SR	1CT:2CT&1CT:2CT	1.20&1.20	0.60&0.60	35&35	0.70&0.70	1.20&1.20	12-10,4-6	A
FAT11205SR	1CT:1.36CT&1CT:1.36CT	1.20&1.20	0.80&0.80	50&50	1.20&1.20	1.40&1.40	1-3,4-6	A
FAT11206SR	1CT:1.41CT&1CT:1.41CT	1.20&1.20	0.80&0.80	50&50	1.40&1.40	1.20&1.20	12-10,9-7	A
FAT11207SR	1CT:2CT&1CT:1.36CT	1.20&1.20	0.60&0.80	35&37	0.70&0.70	1.20&0.90	12-10,4-6	A

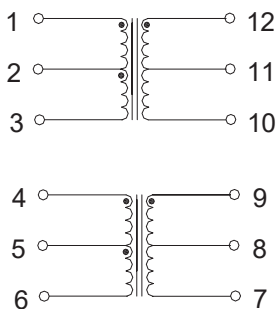
Dimension : mm[inch]+/-0.25[0.01]

A

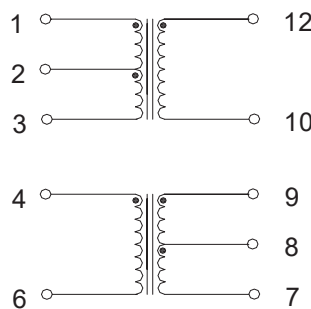


Schematic

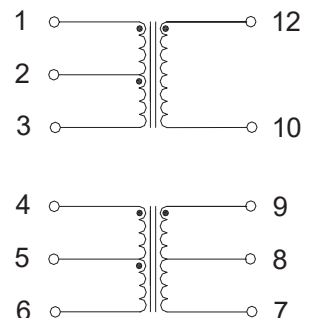
FAT11201SR, FAT11203SR, FAT11204SR, FAT11205SR, FAT11206SR



FAT11202SR



FAT11207SR



T1/CEPT/ISDN-Pri Module

FEATURES

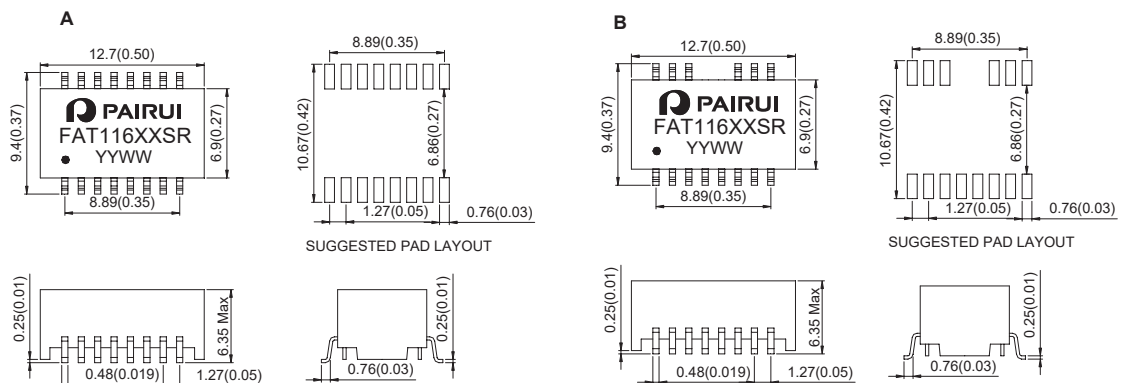
- Compliant with CCITT&FCC standard.
- Provide 1500Vrms isolation
- RoHS compliant



Electrical Specification@25°C Operating Temperature 0 to 70°C

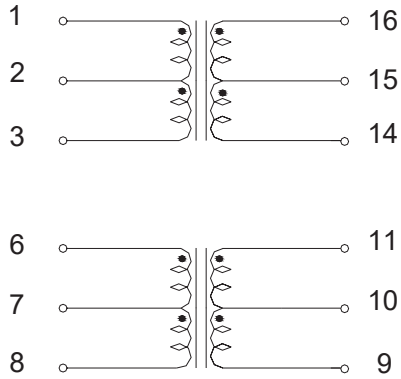
Part Number	Turn Ratio	OCL (mH Min)	LL (uH Max)	C _{ww} (pF Max)	DCR Pri (Ohm Max)	DCR Sec (Ohm Max)	Primary pins	Package
FAT11601SR	1CT:2CT&1CT:2CT	1.20&1.20	0.60&0.60	30&30	0.70&0.70	1.40&1.40	16-14,6-8	A
FAT11602SR	1CT:2CT&1:1.36CT	1.20&1.20	0.60&0.60	30&30	0.70&0.70	1.00&0.80	16-14,6-8	A
FAT11603SR	1CT:1.15CT&1CT:1.15CT	1.20&1.20	0.60&0.60	30&30	0.70&0.70	0.70&1.00	16-14,6-8	A
FAT11604SR	1:1/1.26&1CT:2CT	1.20&1.20	0.60&0.60	30&30	0.70&0.70	0.80&1.00	16-14,6-8	A
FAT11605SR	1CT:1CT&1CT:1CT	1.20&1.20	0.60&0.60	30&30	0.70&0.70	0.70&0.70	16-14,6-8	A
FAT11606SR	1:1.15CT:1&1CT:2CT	1.20&1.20	0.60&0.60	30&30	0.70&0.70	0.75&0.75	16-14,6-8	A
FAT11607SR	1CT:1CT&1CT:2CT	1.00&1.00	0.60&0.60	30&30	0.70&0.70	0.70&1.00	1-3,6-9	A
FAT11608SR	1CT:1.41CT&1CT:1.41CT	1.00&1.00	0.60&0.60	30&30	0.70&0.70	0.90&0.90	16-14,11-9	A
FAT11609SR	1CT:1CT&1CT:1.36CT	1.20&1.20	0.60&0.60	30&30	0.70&0.70	0.70&1.00	16-14,6-8	A
FAT11610SR	1CT:2.42CT&1CT:2.42CT	1.20&1.20	0.60&0.60	25&25	0.70&0.70	1.20&1.20	1-3,6-8	A
FAT11611SR	1CT:1.36CT&1CT:1.36CT	1.20&1.20	0.60&0.60	30&30	0.70&0.70	1.0&1.0	1-3,6-8	A
FAT11612SR	1CT:1CT&1CT:2.4CT	1.00&1.00	0.80&0.80	30&30	0.85&0.85	0.85&1.0	9-11,1-3	A
FAT11613SR	1:1.36CT&1:2CT	1.50&1.50	0.50&0.50	35&35	0.90&0.90	1.30&1.30	16-14,6-8	A
FAT11614SR	1:1.15CT&1:2CT	1.20&1.20	0.60&0.60	30&30	0.70&0.70	0.70&1.00	16-14,6-8	A
FAT11615SR	2CS:1.57/2&2CS:1.57/2	1.50&1.50	0.50&0.50	40&40	0.70&0.70	1.00&1.00	1-2,5-6	A
FAT11616SR	2CT:1/1.26&2CT:1/1.26	1.50&1.50	0.50&0.50	40&40	0.70&0.70	1.00&1.00	1-3,11-9	A
FAT11617SR	1:2.42CT&1:2.42CT	1.50&1.50	0.50&0.50	40&40	0.70&0.70	1.30&1.30	1-2,5-6	A
FAT11618SR	1CT:1CT&1CT:2CT	1.20&1.20	0.60&0.60	30&30	0.70&0.70	0.70&1.00	1-3,11-9	A
FAT11619SR	1CT:1:1&1CT:1:1	750&750	1.0&1.0	9.0&9.0	0.45&0.45	0.45&0.45	1-3,6-8	B
FAT11620SR	1CT:1CT&1CT:2CT	1.20&1.20	0.60&0.60	30&30	0.70&0.70	0.70&1.00	16-14,6-8	A
FAT11621SR	1:1:1&1:1:1	25&25	12&12	80&80	4.0&4.0	6.4&6.4	1-4,5-8	A

Dimension : mm[inch]+/-0.25[0.01]

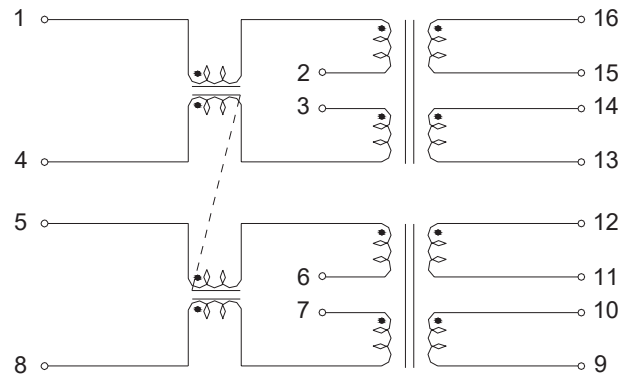


Schematic

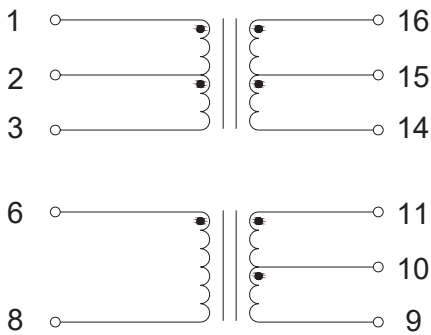
**FAT11601SR, FAT11604SR, FAT11605SR, FAT11607SR ,
FAT11608SR, FAT11609SR, FAT11610SR, FAT11611SR,
FAT11612SR , FAT11616SR, FAT11618SR, FAT11620SR**



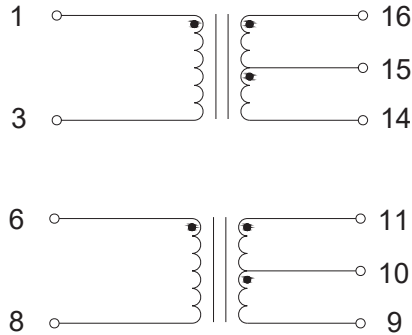
FAT11621SR



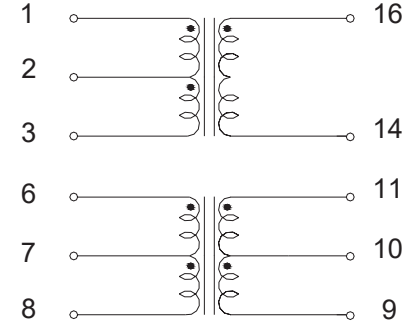
FAT11602SR, FAT11613SR



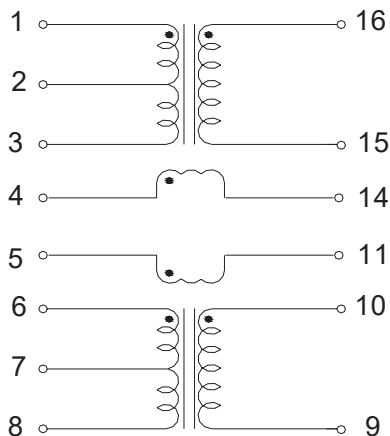
FAT11614SR, FAT11617SR



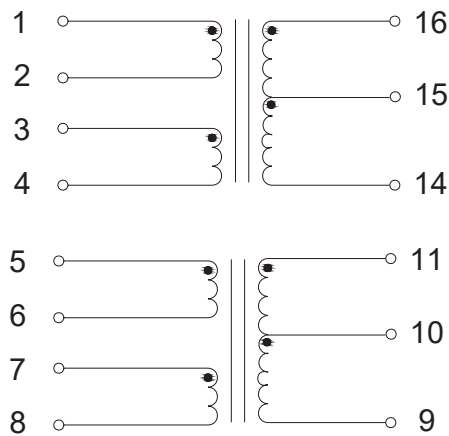
FAT11603SR, FAT11606SR



FAT11619SR



FAT11615SR



T1/CEPT/ISDN-Pri Module

FEATURES

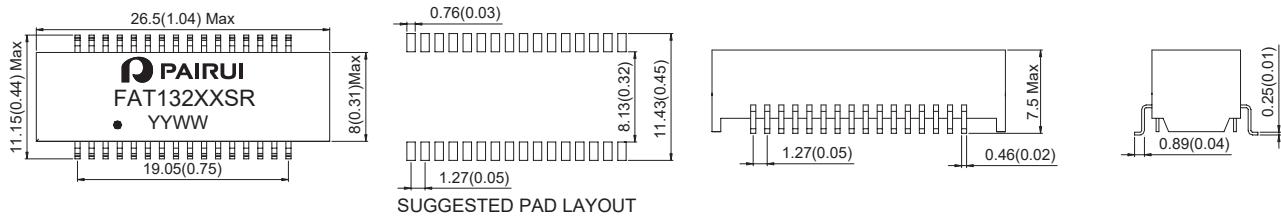
- Compliant with CCITT&FCC standard.
- Provide 1500Vrms isolation
- RoHS compliant

Electrical Specification@25°C Operating Temperature 0 to 70°C

Part Number	Turn Ratio (pri:Sec ± 5%)		OCL (mH Min)		LL (uH Max)		Cww (pF Max)		Primary Pins		Package
	Transmit	Receive	Trans	Rec	Trans	Rec	Trans	Rec	Transmit	Receive	
FAT13201SR	1:2	1:2	1.2	1.2	0.6	0.6	30	30	1-2,5-6,9-10,13-14	3-4,7-8,11-12,15-16	A
FAT13202SR	1:2	1:1	1.2	1.2	0.6	0.6	30	30	1-2,7-8,9-10,15-16	3-4,5-6,11-12,13-14	A

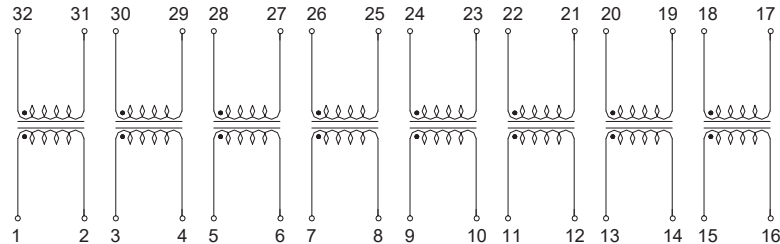
Dimension : mm[inch]+/-0.25[0.01]

A

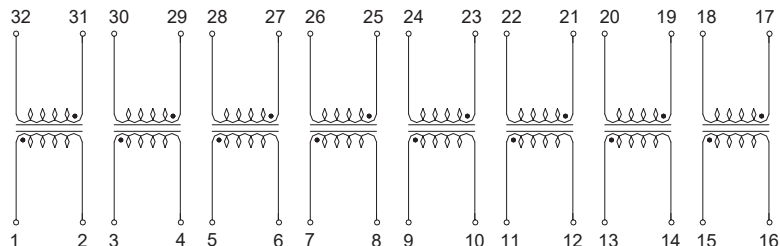


Schematic

FAT13201SR



FAT13202SR



T1/CEPT/ISDN-Pri Module

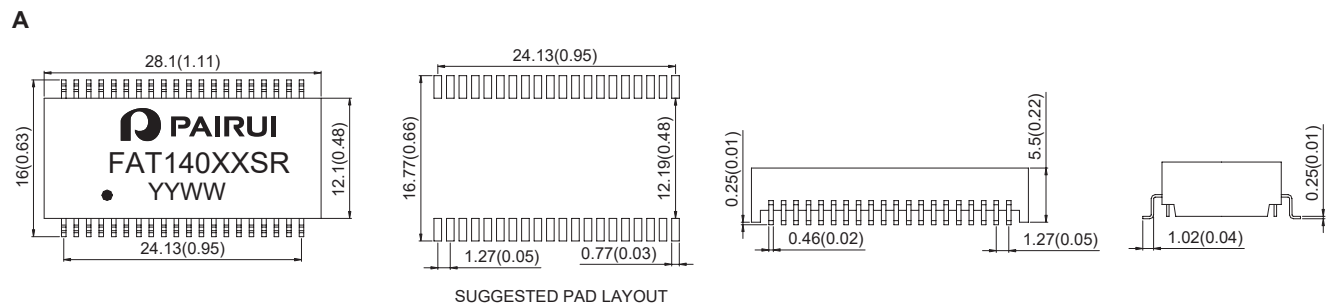
FEATURES

- Compliant with CCITT&FCC standard.
- Provide 1500Vrms isolation
- RoHS compliant

Electrical Specification@25°C Operating Temperature 0 to 70°C

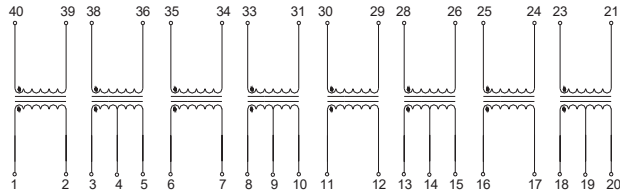
Part Number	Turn Ratio (pri:Sec ± 5%)		OCL (mH Min)		LL (uH Max)		Cww (pF Max)		Primary Pins		Package
	Transmit	Receive	Trans	Rec	Trans	Rec	Trans	Rec	Transmit	Receive	
FAT14001SR	1:1.36CT	1:1.36CT	1.2	1.2	0.4	0.5	25	25	1-2,6-7,11-12,16-17	38-36,33-31,28-26,23-21	A
FAT14002SR	1:1	1:1.15CT	1.2	1.2	0.6	0.6	35	35	1-2,6-7,11-12,16-17	38-36,33-31,28-26,23-21	A
FAT14003SR	1:2CT	1:2CT	1.2	1.2	0.6	0.6	35	35	4-5,9-10,14-15,19-20	24-25,29-30,34-35,39-40,	A
FAT14004SR	1:2CT	1:1CT	1.2	1.2	0.6	0.6	35	35	1-2,9-10,11-12,19-20	23-25,26-28,33-35,36-38,	A
FAT14005SR	1:1.36CT	1:2CT	1.2	1.2	0.4	0.5	25	25	24-25,29-30,34-35,39-40	4-5,9-10,14-15,19-20	A
FAT14006SR	1:2	1:2CT	1.2	1.2	0.6	0.6	35	35	1-2,6-7,11-12,16-17	21-22,26-27,31-32,36-37	A
FAT14007SR	1CT:1.41	1CT:1.41	1.2	1.2	0.6	0.6	35	35	1-3,6-8,11-13,16-18	21-23,26-28,31-33,36-38	A
FAT14008SR	1:2.4	1:1	1	1	0.5	0.5	35	35	1-2,8-9,11-12,18-19	24-25,27-28,34-35,37-38	A
FAT14009SR	1:1/1.26	1:2CT	1.2	1.2	0.6	0.6	35	35	1-2,6-7,11-12,16-17	21-22,26-27,31-32,36-37	A
FAT14010SR	1:1.15	1:1.15	1.2	1.2	0.6	0.6	35	35	1-3,6-8,11-13,16-18	4-5,9-10,14-15,19-20	A
FAT14011SR	1:2	1:2	1.2	1.2	0.6	0.6	35	35	4-5,9-10,14-15,19-20	1-3,6-8,11-13,16-18	A
FAT14012SR	1:2	1:1	0.8	1	0.4	0.4	30	30	1-2,6-7,11,12,16-17	3-4,8-9,13-14,18-19	A
FAT14013SR	1:1.26	1:1.26	1.2	1.2	0.5	0.5	25	25	1-3,6-8,11-13,16-18	4-5,9-10,14-15,19-20	A
FAT14014SR	1:2CT	1CT:2	1.2	1.2	0.6	0.6	35	35	4-5,9-10,14-15,19-20	1-3,6-8,11-13,16-18	A
FAT14015SR	1:1	1:2CT	1.2	1.2	0.6	0.6	35	35	1-2,6-7,11-12,16-17	21-23,26-28,31-33,36-38	A
FAT14016SR	1:2.4	1:2.4	1.2	1.2	0.6	0.6	35	35	1-3,6-8,11-13,16-18	4-5,9-10,14-15,19-20	A
FAT14017SR	1:2	1:2	1.5	1.5	0.5	0.5	35	35	1-2,6-7,11-12,16-17	3-4,8-9,13-14,18-19	A
FAT14018SR	1:1.26CT	1:1.26CT	1.2	1.2	0.6	0.6	35	35	4-5,9-10,14-15,19-20	24-25,29-30,34-35,39-40	A
FAT14019SR	1:2CT	1CT:2	1.2	1.2	0.6	0.6	35	35	4-5,9-10,14-15,19-20	1-3,6-8,11-13,16-18	A

Dimension : mm[inch]+/-0.25[0.01]

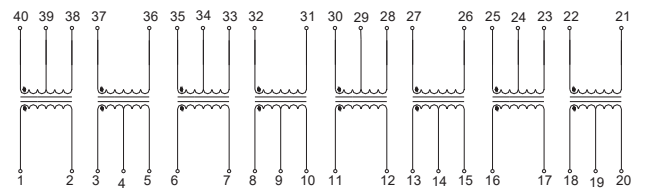


Schematic

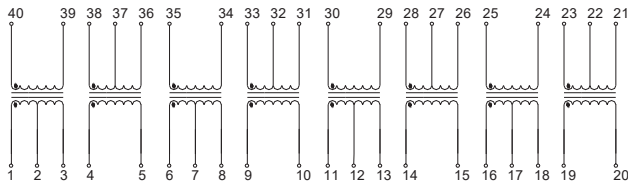
FAT14001SR,FAT14002SR,FAT14015SR



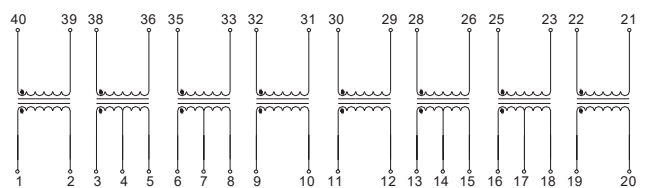
FAT14004SR,FAT14009SR



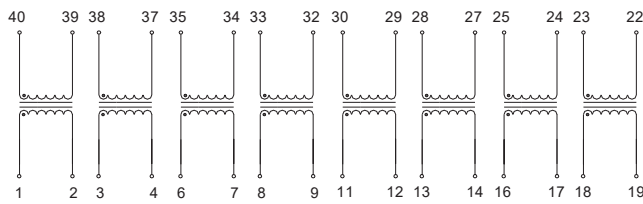
FAT14003SR,FAT14005SR,FAT14007SR,FAT14014SR,FAT14018SR



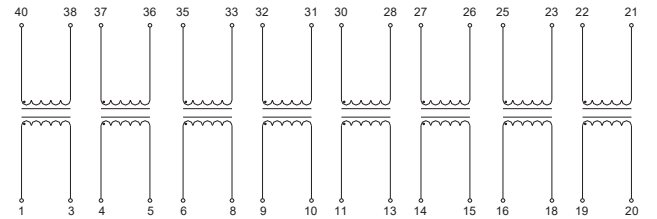
FAT14006SR



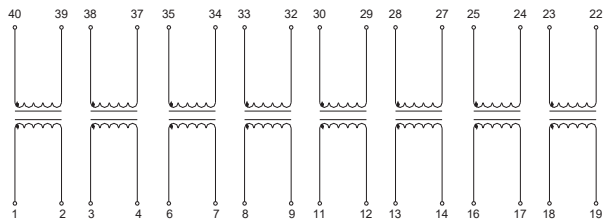
FAT14012SR



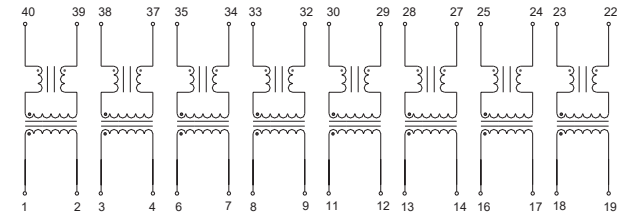
FAT14010SR,FAT14011SR,FAT14013SR,FAT14016SR



FAT14008SR



FAT14017SR



FAT14019SR

